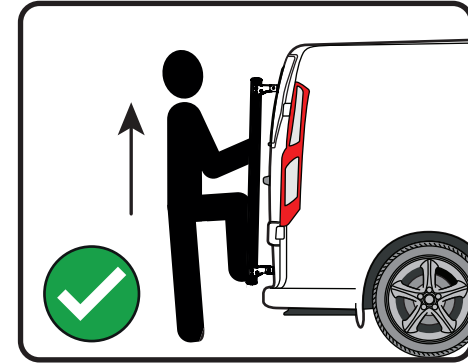
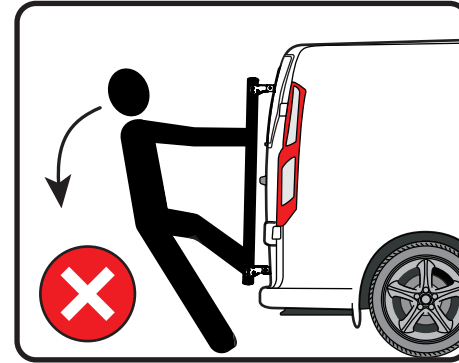
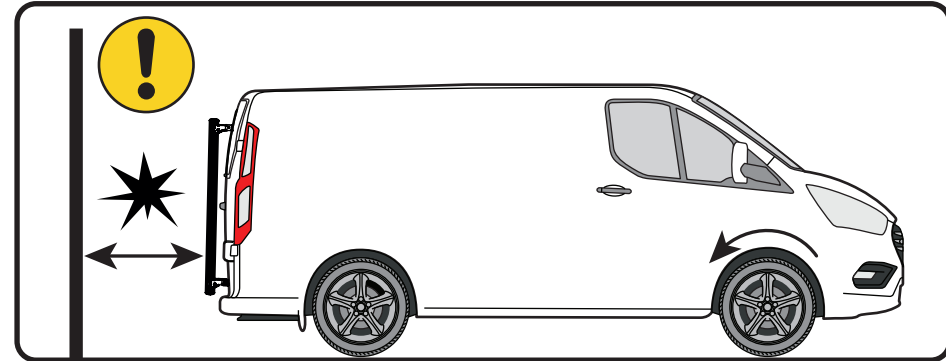
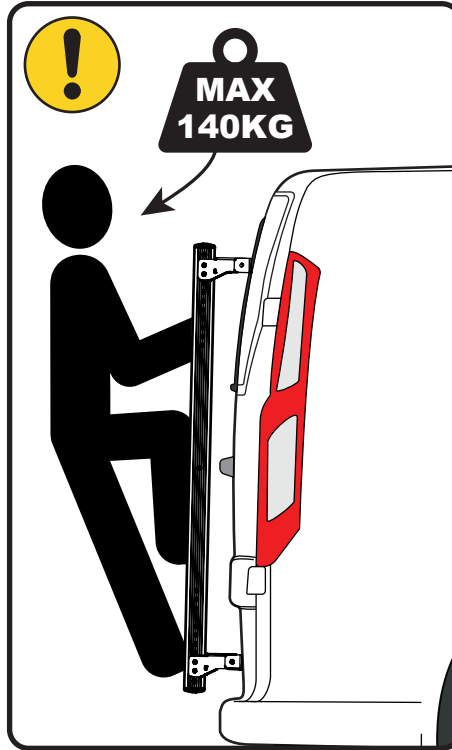
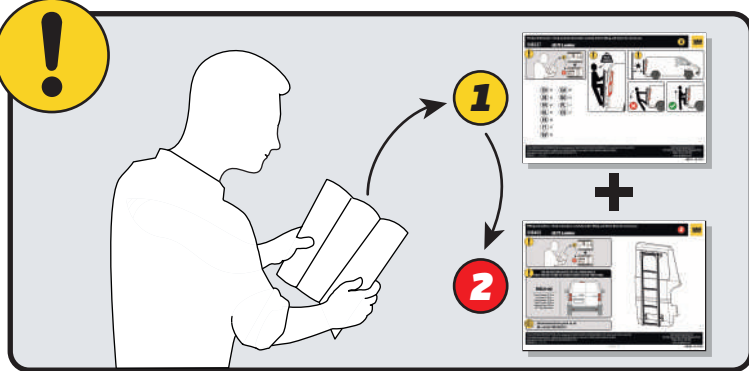


IN8337

ULTI Ladder



PRODUCT INFORMATION - READ CAREFULLY BEFORE FITTING AND RETAIN FOR FUTURE USE

NOTICE

Van Guard Accessories Ltd and/or its distributors does not accept liability for products which have not been fitted in accordance with the fitting instructions provided or to the appropriate vehicle.

Please refer to the vehicle manufacturers handbook to establish the maximum roof load carrying capacity for your vehicle. Do not exceed this limit.

Van Guard Accessories Ltd accepts no liability for any damage to, or loss of property as a result from carrying loads in excess of the vehicle manufacturers recommendation.

FITTING (A)

A.01. Assembly and mounting must be carried out in accordance with the supplied fitting instructions, ensure you have read and understood the fitting instructions before you start.

A.02. Check all parts are present and correct using the supplied fitting instructions before you start. Due to our kitting, process you may receive more parts than are required for your product.

A.03. Clean vehicle rear door, especially the mounting areas before you start.

A.04. Ensure all fixings are tightened to the torque rating stated in the supplied fitting instructions.

DRIVING/USE (B)

B.01. Before any journey, all fixing's of the ladder must be checked for tight fit and tightened if required.

B.02. After any interruption of a journey during which the vehicle ladder has been left unsupervised, all freely accessible fixations should be checked for tight fit and function ability (check for damage due to outside intervention).

B.03. After first fitting of the ladder and whenever the ladder is refitted to the rear door, fixings shall be checked the first time after a short period of driving, 50 km or 30 minutes maximum, for tight fit and function ability and tightened if necessary. Especially on longer journeys, fixings must be checked at regular intervals - after 500 km at the latest - for firmness and tightness and must be re tightened if necessary. On bad terrain, a check on fixings must be repeated at intervals of two hours of driving.

B.04. Do not exceed the maximum specified load rating of the ladder, which is stated on the first page of this document.

B.05. Upon ascending and descending the ladder the user must maintain three points of contact and face towards the ladder/ vehicle at all times.

B.06. Users must not dismount the ladder by jumping, sliding or descending more than one step at a time.

B.07. The vehicle's rear door must be securely closed prior to using the ladder. Failure to do so may cause vehicle damage and /or cause personal injury.

B.08. Users must not carry equipment or tools in hand while ascending and descending the ladder, both hands must remain free.

B.09. Users must avoid using the ladder with greasy, oily or slippery hands/ footwear in order to avoid loss of grip. Clean the ladder prior to use if it is not free from oil, grease, snow, ice and slippery substances.

B.10. When driving with the ladder, the additional length of the vehicle must be considered. If this is neglected, collisions with major damage to property and/or personal injury may be the consequence.

MAINTENANCE (D)

D.01. Regularly check all fixings for tightness.

D.02. Regularly inspect all components for signs of wear or damage. Replace lost, damaged, or worn parts immediately and avoid use until corrected with components supplied by the manufacturer.

D.03. No modifications to the product are permitted. Any changes made to the product as well as the use of spare parts or accessories other than those supplied by the manufacturer will lead to the lapsing of the manufacturer's warranty and liability for any material damage or accidents. You should observe the supplied fitting instructions and only use the original parts supplied.

FINISHING (E)

E.01. The fitter, end user and anyone using the product must receive and read both this document and the supplied fitting instructions. Retain both the fitting instructions and this document for future use.

E.02. Ensure all packaging is disposed of responsibly.

E.03. Ensure product is disposed of responsibly at its end of life.

E.04. Always comply with applicable safety rules and regulations when fitting and using this product.