

IN9424

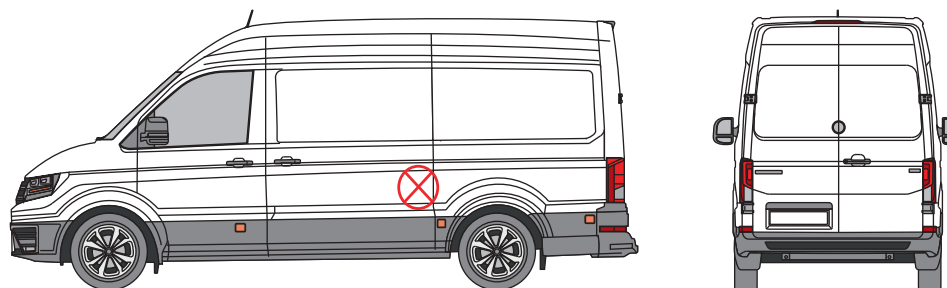
External Shield - Sliding Door

THANK YOU FOR PURCHASING A VAN GUARD EXTERNAL SHIELD

SUITS THE FOLLOWING MODELS

Vehicle:
Volkswagen Crafter 2017 on
MAN TGE 2017 on

Door:
Sliding - Driver's and Passenger's



⊗ Indicates approximate placement of shield



CAUTION

PLEASE TAKE THE TIME TO READ THROUGH THE IMPORTANT INFORMATION BELOW BEFORE PROCEEDING TO FIT THIS PRODUCT



FAILURE TO TAKE NOTICE OF THE FOLLOWING INFORMATION MAY RESULT IN DAMAGE TO THE VEHICLE.



Important: Follow the instructions and all measurements carefully. Double check measurements before making any cuts. Drawings are for guidance only. Every effort has been made to ensure the accuracy of the instructions provided however Van Guard Accessories Ltd accepts no liability for any inaccuracies of either the drawings provided or vehicle variations. All bare metal should be treated with a manufacturer approved anti-corrosion compound and no liability is accepted for any incorrect installation or corrosion to body panels or within cavities. It is the sole responsibility of the installer to ensure the suitability of both the vehicle and of the supplied parts before installation is started. No liability is accepted for the fitting of the products.

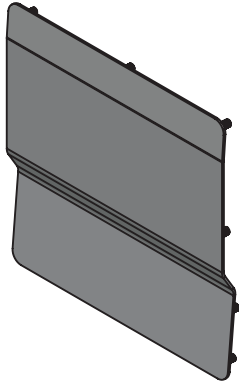
This FITTING INSTRUCTION is the property of VAN GUARD ACCESSORIES LTD. and must not be used for manufacturing purposes, copied nor communicated in any way to third parties without written permission from VAN GUARD ACCESSORIES LTD.

IN9424_A (CN:NR)

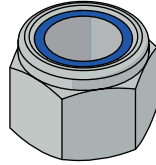
Van Guard Accessories Ltd
Fair Oak Close, Exeter Airport Business Park,
Exeter, Devon, EX5 2UL
www.van-guard.co.uk

SUPPLIED COMPONENTS

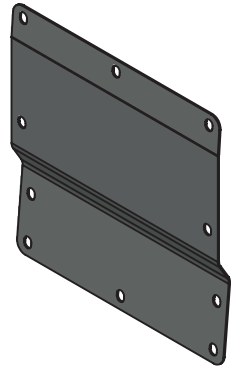
AS3724 X1
(SHIELD)



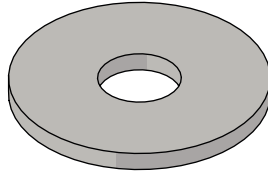
FX4004 X10
(M6 NYLOC)



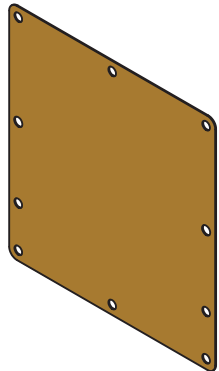
ME3653 X1
(DRILL TEMPLATE)



FX4013 X10
(M6 WASHER - LARGE)



MA6179 X1
(GASKET)



Wear the appropriate protective equipment (safety glasses & gloves) while fitting this product.



Dispose of packaging materials responsibly - Do not dispose until you have checked all parts and fixings are present.

FITTED IMAGE



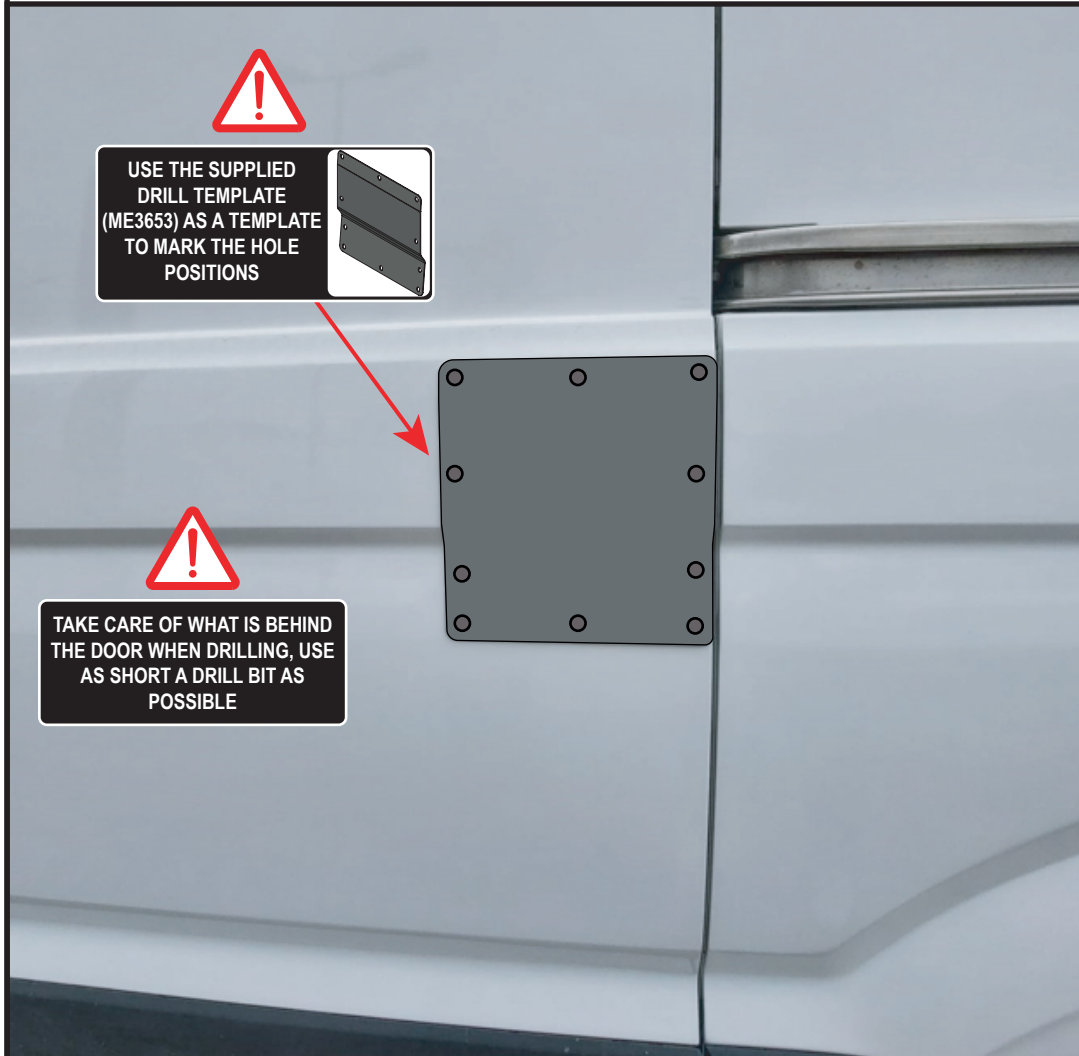
1. REMOVAL OF DOOR PANEL

Remove the door panel and then carefully peel back the plastic membrane. Retain all parts for refitting later.



2. POSITIONING THE SHIELD

1. Protect the area of the door where the shield will be fitted with masking tape.
2. Use the supplied drill template (ME3653) as a template to mark the hole positions. Place the template in position and move until it lines up with the door correctly.
3. Use the holes in the template as a guide for the material to remove. Due to the folded profile of the shield some of the holes will need elongating to allow the studs to pass through.
4. **With the door open**, carefully drill the fixings holes. Remove any swarf and treat bare metal with anti-corrosion spray.



3. FITTING THE SHIELD

Stick the rubber gasket to the outer shield and then place the shield in position and secure in place with M6 nyloc nuts and M6 washers. **Take care not to overtighten the nuts.** Once secure, refit the door panel removed in step 1.

