

IN9437

External Shield - Twin Rear Door

THANK YOU FOR PURCHASING A VAN GUARD EXTERNAL SHIELD

SUITS THE FOLLOWING MODELS

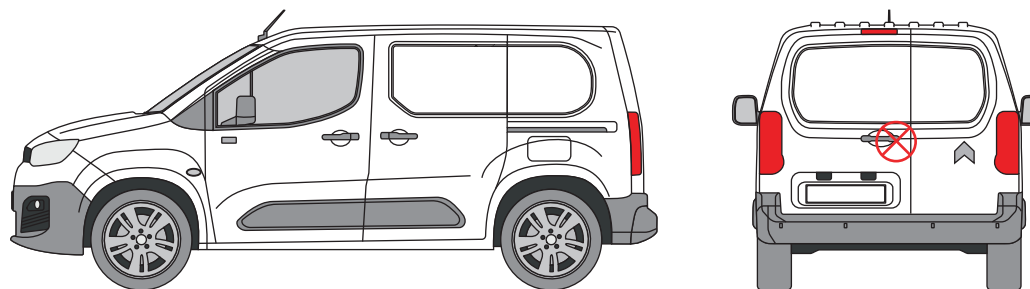
Vehicle:

Citroen Berlingo 2018 on
Fiat Doblo 2022 on
Peugeot Partner 2018 on
Toyota Pro-Ace 2020 on
Vauxhall Combo 2018 on

Door:

Rear - Twin

⊗ Indicates approximate placement of lock



CAUTION

PLEASE TAKE THE TIME TO READ THROUGH THE IMPORTANT INFORMATION BELOW BEFORE PROCEEDING TO FIT THIS PRODUCT



FAILURE TO TAKE NOTICE OF THE FOLLOWING INFORMATION MAY RESULT IN DAMAGE TO THE VEHICLE.



Important: Follow the instructions and all measurements carefully. Double check measurements before making any cuts. Drawings are for guidance only. Every effort has been made to ensure the accuracy of the instructions provided however Van Guard Accessories Ltd accepts no liability for any inaccuracies of either the drawings provided or vehicle variations. All bare metal should be treated with a manufacturer approved anti-corrosion compound and no liability is accepted for any incorrect installation or corrosion to body panels or within cavities. It is the sole responsibility of the installer to ensure the suitability of both the vehicle and of the supplied parts before installation is started. No liability is accepted for the fitting of the products.

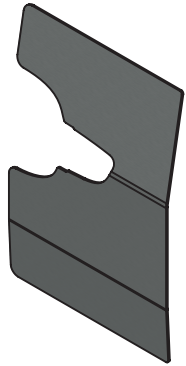
This FITTING INSTRUCTION is the property of VAN GUARD ACCESSORIES LTD. and must not be used for manufacturing purposes, copied nor communicated in any way to third parties without written permission from VAN GUARD ACCESSORIES LTD.

IN9437_A (CN:NR)

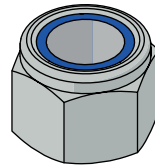
Van Guard Accessories Ltd
Fair Oak Close, Exeter Airport Business Park,
Exeter, Devon, EX5 2UL
www.van-guard.co.uk

SUPPLIED COMPONENTS

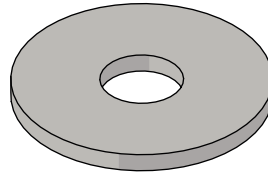
AS3775 X1
(SHIELD)



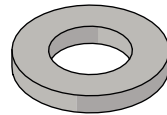
FX4004 X10
(M6 NYLOC)



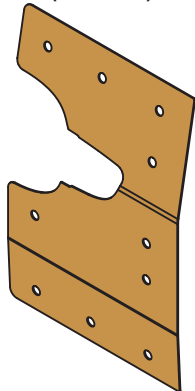
FX4013 X5
(M6 WASHER - LARGE)



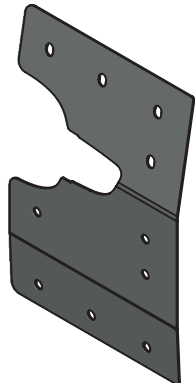
FX4017 X5
(M6 WASHER - SMALL)



MA6193 X1
(GASKET)



ME3659 X1
(DRILL GUIDE)



MA6099 X5
(PLASTIC BUNG)



Wear the appropriate protective equipment (safety glasses & gloves) while fitting this product.



Dispose of packaging materials responsibly - Do not dispose until you have checked all parts and fixings are present.

FITTED IMAGE



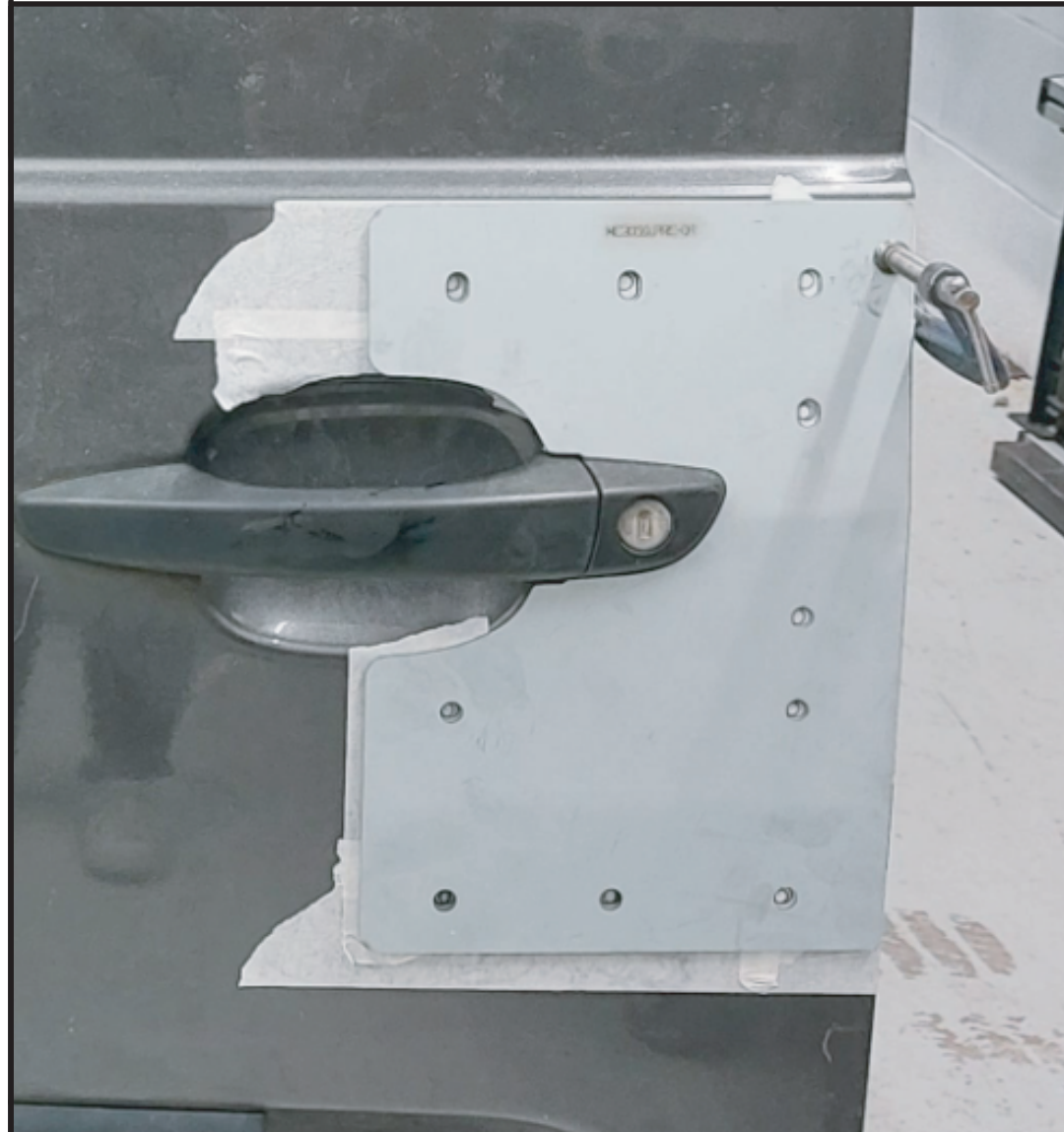
1. REMOVAL OF THE DOOR PANEL

Remove door panel by removing the panel clips, to remove clips pull out the centres. Peel back the plastic membrane to allow access to the door cavity.



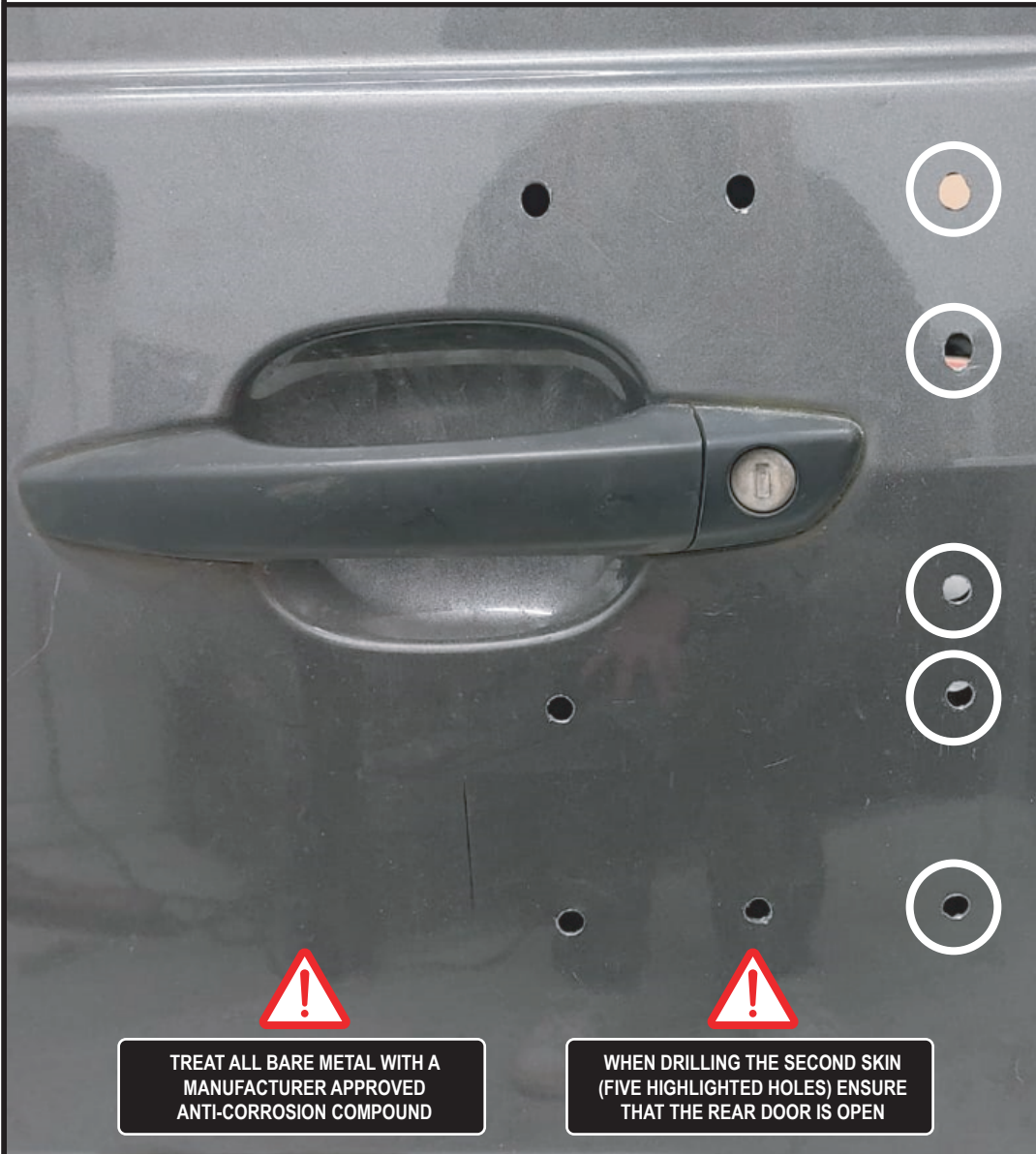
2. POSITIONING THE SHIELD

1. Protect the area of the door where the shield will be fitted with masking tape.
2. Use the supplied drill guide (ME3659) as a template. Place the template in position and mark the hole positions.
3. Due to the folded profile of the shield some of the holes will need elongating to allow the studs to pass through.



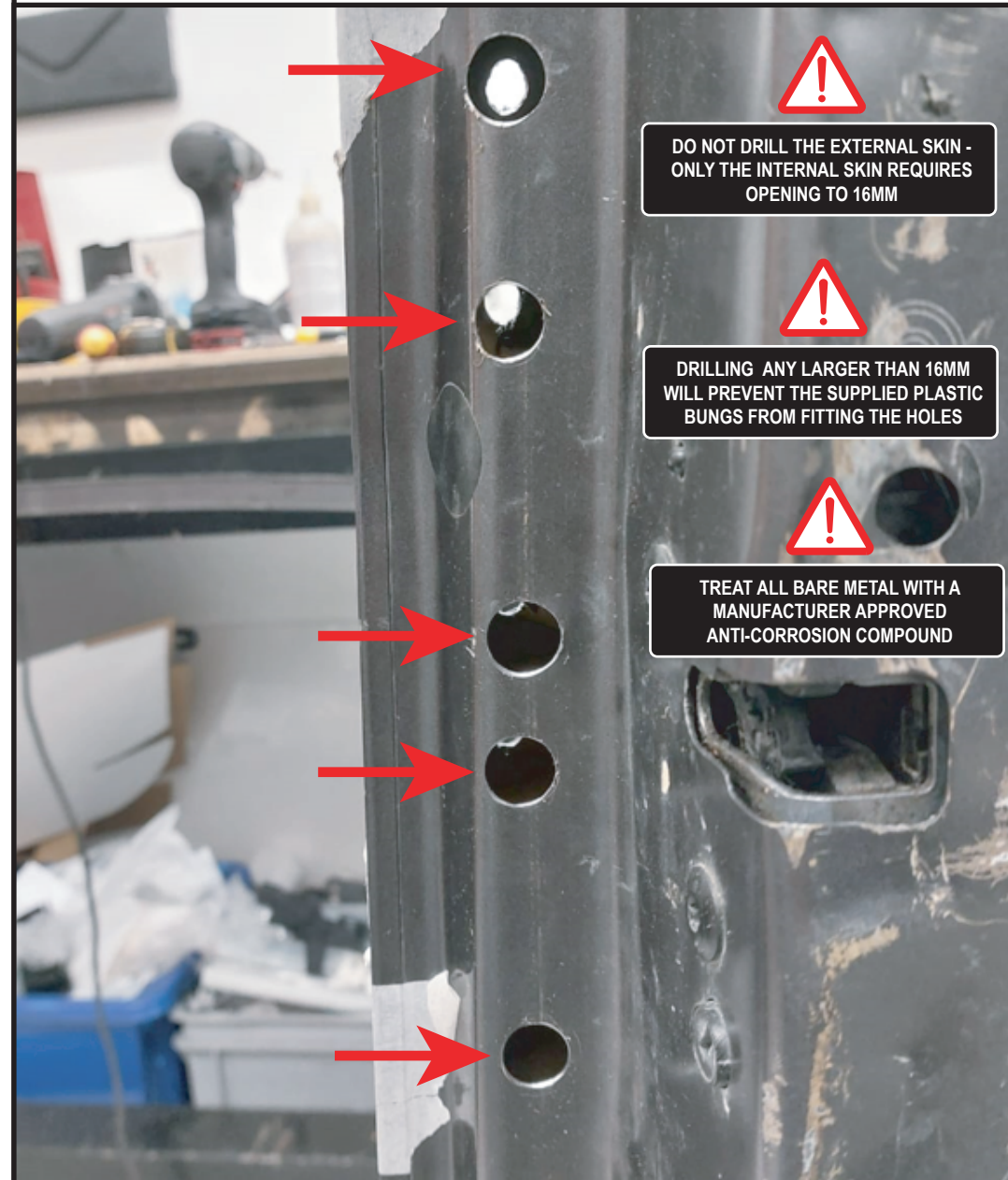
3. DRILL HOLES

With the door open, carefully drill the fixings holes, using a 4mm pilot then opening the 10 x M6 holes to 8mm. The five highlighted holes have a second skin set approximately 20mm back, carefully drill through both skins. **Take care of what is behind the door when drilling, use as short a drill bit as possible.** Remove any swarf and treat bare metal with anti-corrosion spray.



4. DRILL HOLES

Open out the five holes shown to 16mm, this is to allow you to get a socket through the hole to later tighten the fixings. **Only open out the hole on the internal skin of the door, do not drill back through the external skin of the door.**



5. FITTING THE SHIELD

Stick the gasket to the outer shield and then place the shield in position. Secure in place with the 5 x M6 nyloc nuts and 5x small washers on the edge of the door and the 5 x M6 nyloc nuts and 5 x large washers on the remaining studs. **Take care not to overtighten the nuts.** Once fitted, refit the door panel.



5 X M6 SMALL WASHERS ON THE EDGE OF THE DOOR.



6. FITTING THE PLASTIC BUNGS

Insert the five supplied plastic bungs to cover the holes shown.

