

IN9193

External Shield - Twin Rear Door

THANK YOU FOR PURCHASING A VAN GUARD EXTERNAL SHIELD

SUITS THE FOLLOWING MODELS

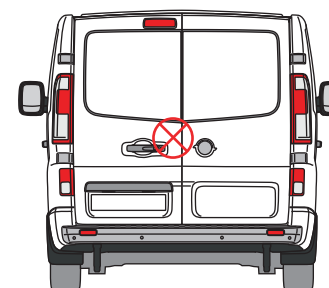
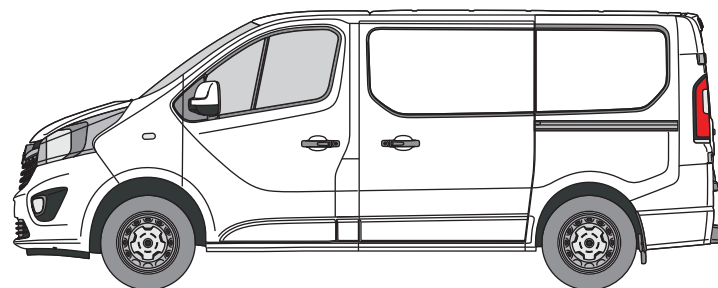
Vehicle:

Vauxhall Vivaro 2014 - 2019
Renault Trafic 2014 onwards
Nissan NV300 2016 - 2021
Nissan Primastar 2022 onwards
Fiat Talento 2016 - 2020

Door:

Rear - Twin

⊗ Indicates approximate placement of shield

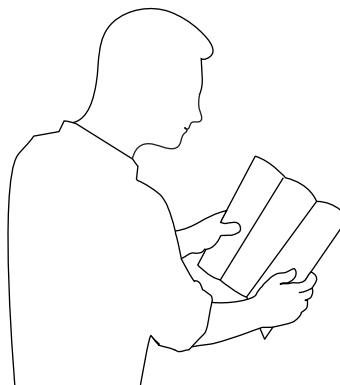


CAUTION

PLEASE TAKE THE TIME TO READ THROUGH THE IMPORTANT INFORMATION BELOW BEFORE PROCEEDING TO FIT THIS PRODUCT



FAILURE TO TAKE NOTICE OF THE FOLLOWING INFORMATION MAY RESULT IN DAMAGE TO THE VEHICLE.



Important: Follow the instructions and all measurements carefully. Double check measurements before making any cuts. Drawings are for guidance only. Every effort has been made to ensure the accuracy of the instructions provided however Van Guard Accessories Ltd accepts no liability for any inaccuracies of either the drawings provided or vehicle variations. All bare metal should be treated with a manufacturer approved anti-corrosion compound and no liability is accepted for any incorrect installation or corrosion to body panels or within cavities. It is the sole responsibility of the installer to ensure the suitability of both the vehicle and of the supplied parts before installation is started. No liability is accepted for the fitting of the products.

This FITTING INSTRUCTION is the property of VAN GUARD ACCESSORIES LTD. and must not be used for manufacturing purposes, copied nor communicated in any way to third parties without written permission from VAN GUARD ACCESSORIES LTD.
IN9193_D (CN:00164)

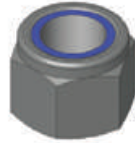
Van Guard Accessories Ltd
Fair Oak Close, Exeter Airport Business Park,
Exeter, Devon, EX5 2UL
www.van-guard.co.uk

SUPPLIED COMPONENTS

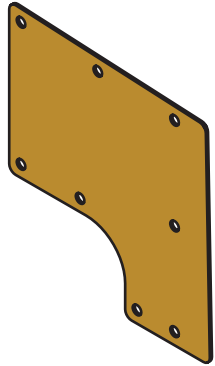
AS3630 X1
(OUTER SHIELD)



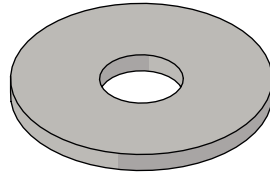
FX4004 X8
(M6 NYLOC)



MA6160 X1
(RUBBER GASKET)



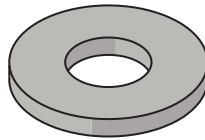
FX4013 X5
(M6 WASHER - LARGE)



MA6099 X3
(PLASTIC BUNG)



ME3577 X3
(M6 WASHER - SMALL)



Wear the appropriate protective equipment (safety glasses & gloves) while fitting this product.



Dispose of packaging materials responsibly - Do not dispose until you have checked all parts and fixings are present.

FITTED IMAGE



1. REMOVAL OF INTERNAL HANDLE

Undo the T30 torx screw holding the internal handle in place and pull the handle from the aperture. Disconnect the rod from the mechanism which will allow you to pull away the handle entirely. This is refitted at the end of the installation when refitting the door panel.



2. REMOVAL OF DOOR PANEL

With the internal release handle now removed, remove the door panel cover using a plastic trim removal tool. This is refitted at the end of the installation.



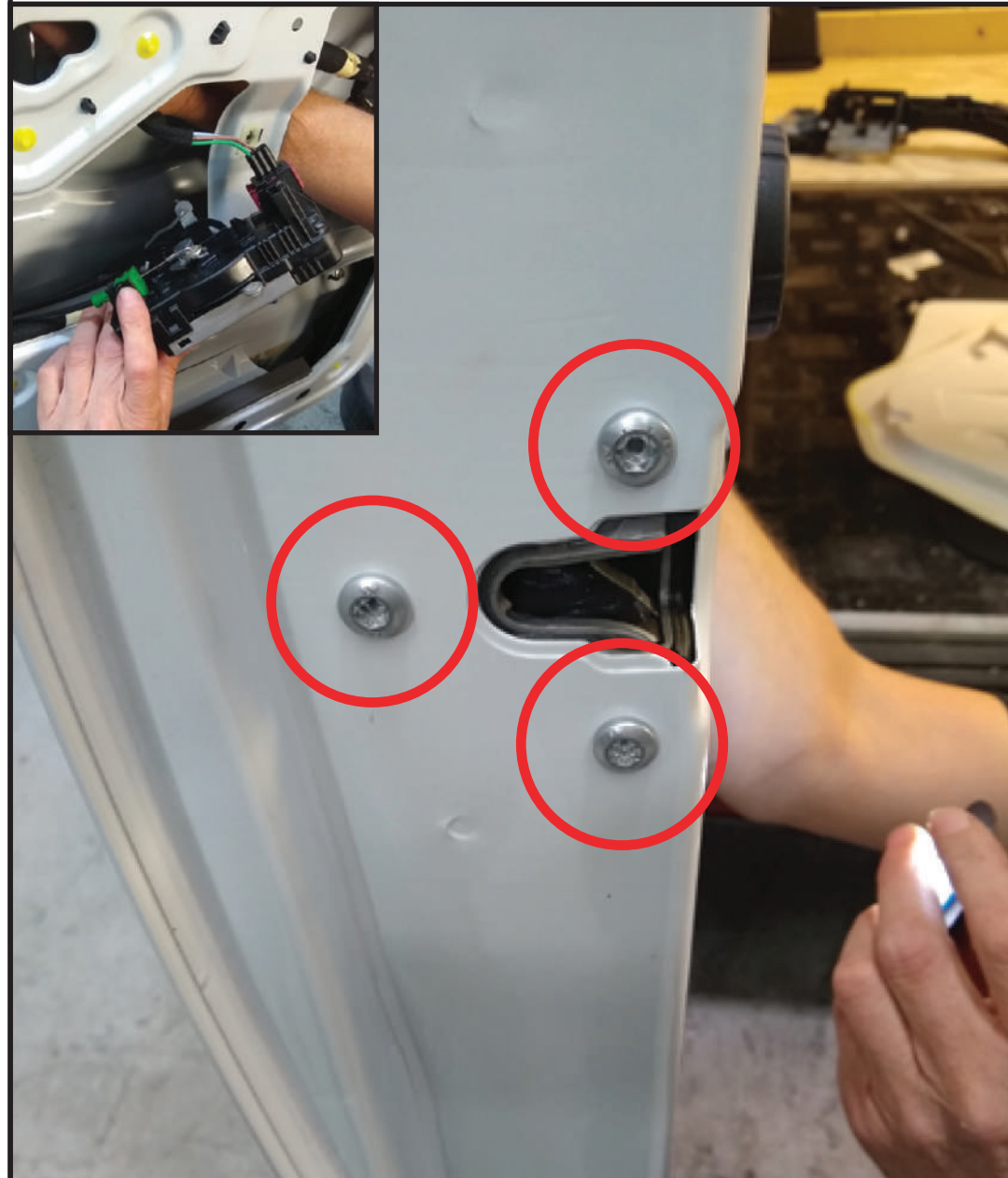
3.1. REMOVAL OF INTERNAL CARRIAGE

Unclip the rod shown below. Image shows the rod in the unclipped position.



3.2. REMOVAL OF INTERNAL CARRIAGE

Remove the three screws shown below. Retain these screws for use again later. You will now be able to pull the carriage down from inside the door cavity as shown. Leave the carriage in this position while you carry out the installation and then refit at the end.



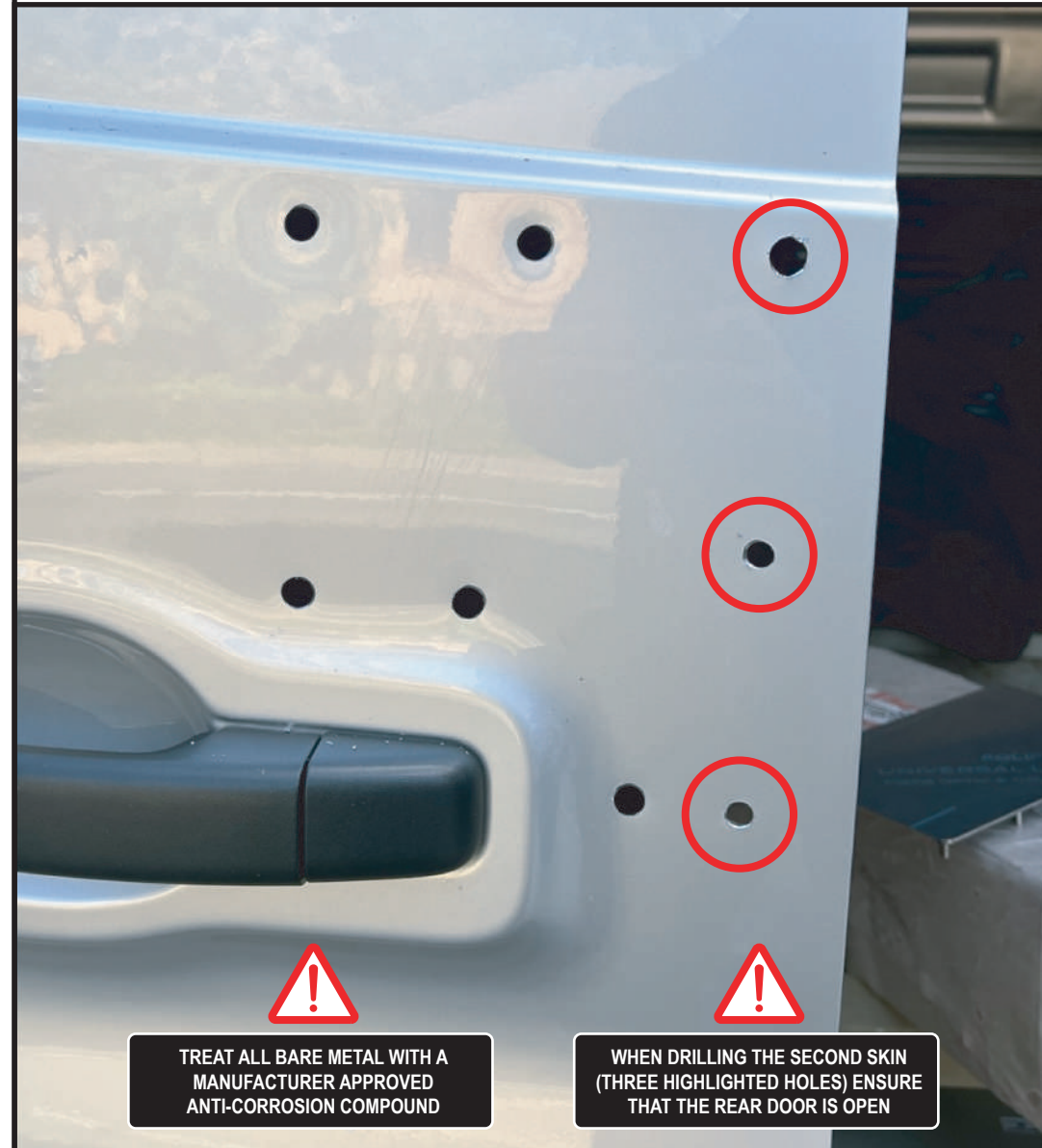
4. MARKING OUT

1. Protect the area of the door where the shield will be fitted with masking tape.
2. Use the rubber gasket as a template to mark the hole positions. Make sure the gasket is orientated correctly with the yellow backing facing you. Move the gasket up and down until the gasket lines up with the door correctly. The rubber gasket is profiled 1.5mm smaller than the shield so it needs to be offset 1.5mm from the edge of the door.
3. Mark down the eight hole centres.



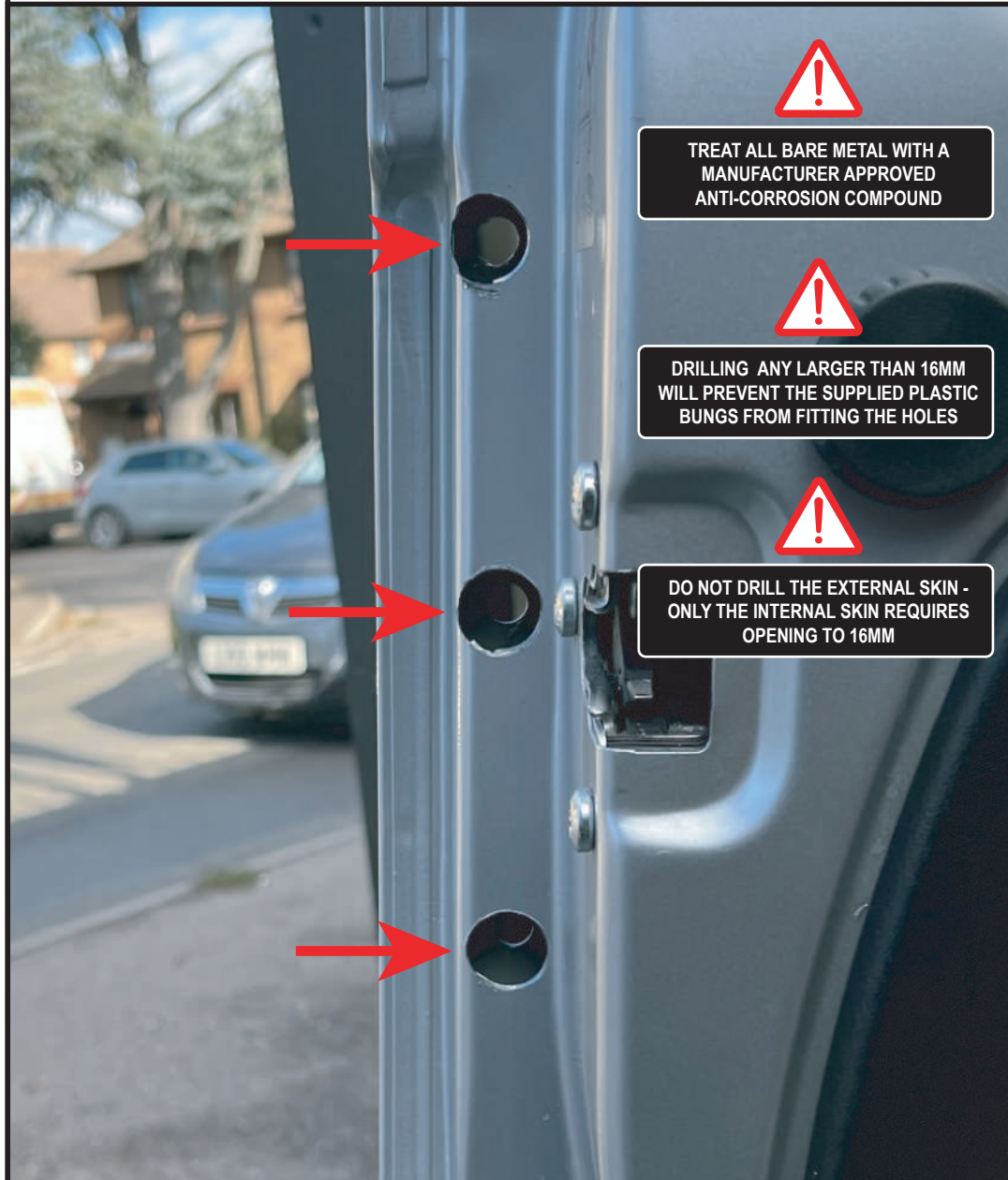
5. DRILL HOLES

With the door open, carefully drill the fixings holes, using a 4mm pilot then opening to 8mm. The three highlighted holes have a second skin set approximately 20mm back, carefully drill through both skins. **Take care of what is behind the door when drilling, use as short a drill bit as possible.** Remove any swarf and treat bare metal with anti-corrosion spray.



6. DRILL HOLES

Open out the three holes shown to 16mm, this is to allow you to get a socket through the hole to later tighten the fixings. **Only open out the hole on the internal skin of the door, do not drill back through the external skin of the door.**



7. FITTING THE SHIELD

Stick the rubber gasket to the outer shield and then place the shield in position and secure in place with M6 nyloc nuts and M6 washers. **Take care not to overtighten the nuts, tighten to 9Nm.**



8. FITTING THE PLASTIC BUNGS

Insert the three supplied plastic bungs to cover the holes shown.



9. REFITTING THE INTERNAL CARRIAGE

Place the internal carriage back into position, clip the rod back into place and secure the carriage with the three screws.



10. REFITTING THE DOOR PANEL

Reattach the rod to the internal release handle and then refit the door panel followed by the internal release handle. Once the release handle has been refitted check everything is operating correctly.

