

**IN9195**

**Internal Shield - Sliding Door**

**THANK YOU FOR PURCHASING A VAN GUARD INTERNAL SHIELD**

**SUITS THE FOLLOWING MODELS**

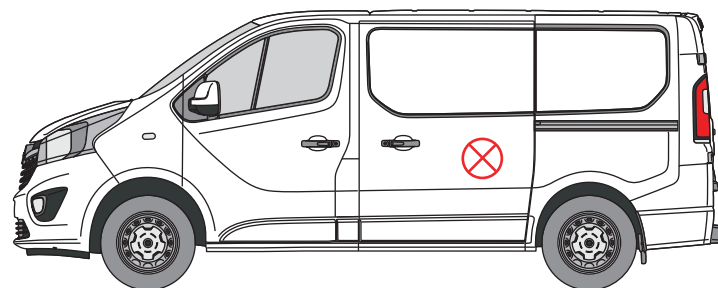
**Vehicle:**

Vauxhall Vivaro 2014 - 2019  
Renault Trafic 2014 onwards  
Nissan NV300 2016 - 2021  
Nissan Primastar 2022 onwards  
Fiat Talento 2016 - 2020

**Door:**

Sliding - Passenger's

⊗ Indicates approximate placement of shield

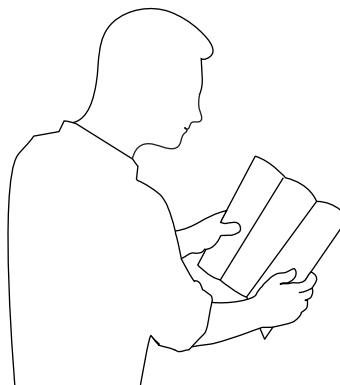


**CAUTION**

**PLEASE TAKE THE TIME TO READ THROUGH THE IMPORTANT INFORMATION BELOW BEFORE PROCEEDING TO FIT THIS PRODUCT**



**FAILURE TO TAKE NOTICE OF THE FOLLOWING INFORMATION MAY RESULT IN DAMAGE TO THE VEHICLE.**



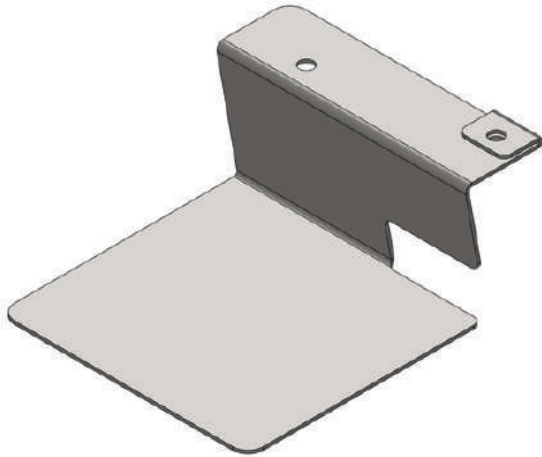
**Important:** Follow the instructions and all measurements carefully. Double check measurements before making any cuts. Drawings are for guidance only. Every effort has been made to ensure the accuracy of the instructions provided however Van Guard Accessories Ltd accepts no liability for any inaccuracies of either the drawings provided or vehicle variations. All bare metal should be treated with a manufacturer approved anti-corrosion compound and no liability is accepted for any incorrect installation or corrosion to body panels or within cavities. It is the sole responsibility of the installer to ensure the suitability of both the vehicle and of the supplied parts before installation is started. No liability is accepted for the fitting of the products.

This FITTING INSTRUCTION is the property of VAN GUARD ACCESSORIES LTD. and must not be used for manufacturing purposes, copied nor communicated in any way to third parties without written permission from VAN GUARD ACCESSORIES LTD.  
IN9195\_B (CN:00114)

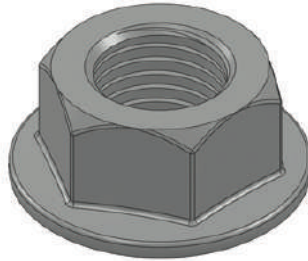
Van Guard Accessories Ltd  
Fair Oak Close, Exeter Airport Business Park,  
Exeter, Devon, EX5 2UL  
[www.van-guard.co.uk](http://www.van-guard.co.uk)

# SUPPLIED COMPONENTS

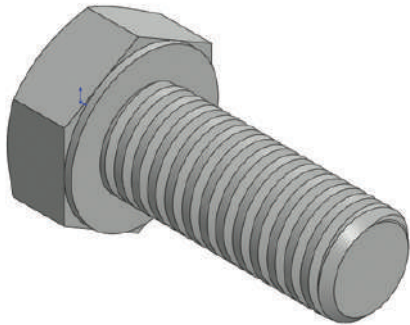
**ME3181 X1**  
(SHIELD)



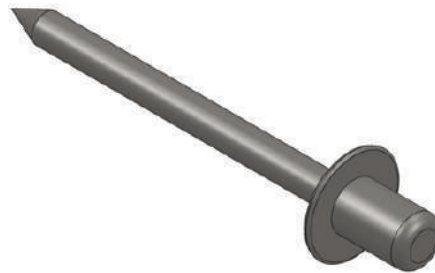
**FX4011 X2**  
(M8 FLANGE NUT)



**FX4018 X2**  
(M8X20 HEX BOLT)



**FX4133 X1**  
(RIVET)



Wear the appropriate protective equipment (safety glasses & gloves) while fitting this product.



Dispose of packaging materials responsibly - Do not dispose until you have checked all parts and fixings are present.

## FITTED IMAGE



## 1. REMOVAL OF INTERNAL RELEASE LEVER

Remove the internal release lever. This is refitted at the end of the installation when refitting the door panel.



## 2. REMOVAL OF DOOR PANEL

Remove the door panel cover using a plastic trim removal tool. This is refitted at the end of the installation.



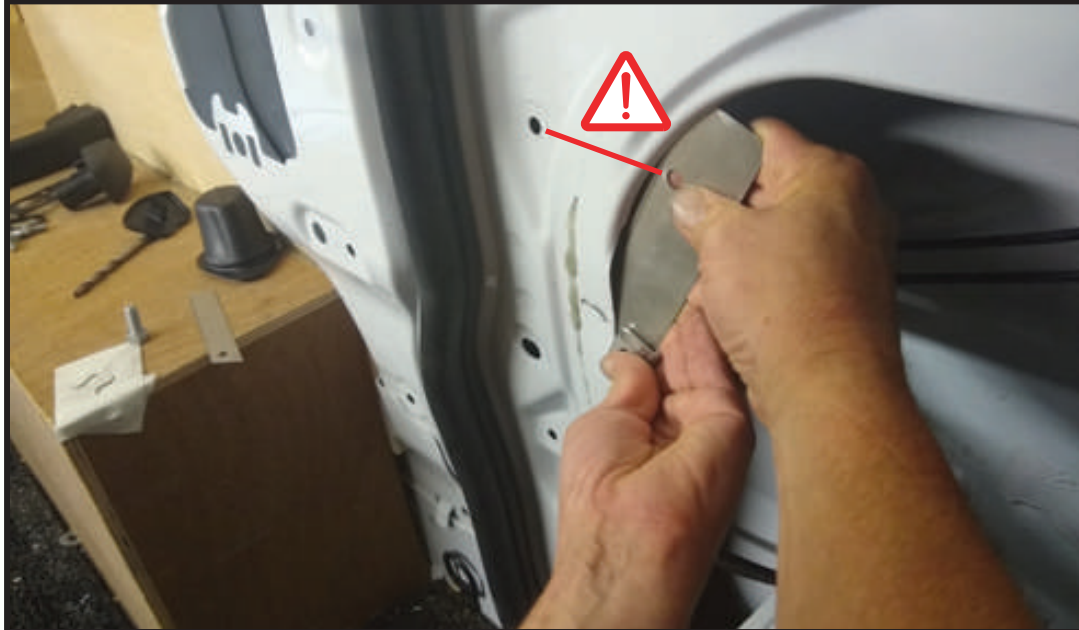
### 3. REMOVAL OF SOUND PROOFING

Carefully remove the sound proofing. This is refitted at the end of the installation when refitting the door panel.



### 4. POSITIONING SHIELD

Place the shield into position as shown, lining up the hole in the shield with the hole in the door panel. Ensure the cables are passed through the shields cut out.



## 5.1. FIXING THE SHIELD

Secure the shield to the door panel by bolting through the existing hole with a M8X20 hex bolt and a M8 flange nut.



## 5.2. FIXING THE SHIELD

Measure 20mm directly below from the centre of the M8 bolt and drill 5mm through both the door panel and the shield. Use the supplied rivet to secure the shield to the door panel.



### 5.3. FIXING THE SHIELD

Drill through the centre of the side tab with a 8.5mm drill bit and secure using a M8X20 hex bolt and a M8 flange nut.

Once in position remove the M8X20 hex bolt and flange nut from step 5.1.



### 6. REFITTING THE DOOR PANEL

Reattach the sound proofing, internal release latch and the door panel.

