

IN9327

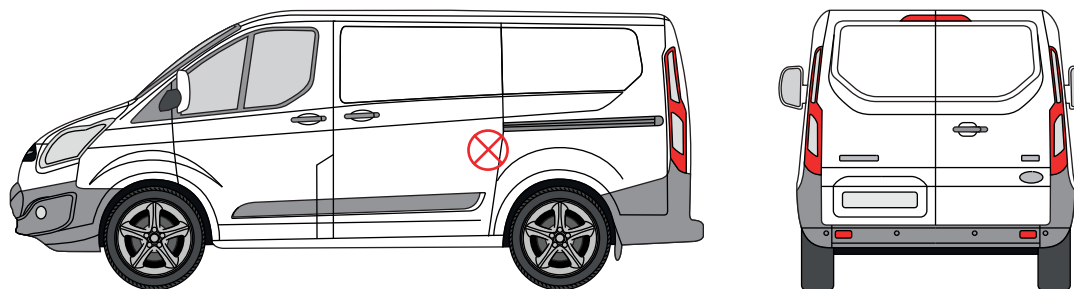
External Shield - Sliding Door

THANK YOU FOR PURCHASING A VAN GUARD EXTERNAL SHIELD

SUITS THE FOLLOWING MODELS

Vehicle:
Ford Transit Custom 2013 on

Door:
Sliding - Passenger's



 Indicates approximate placement of shield



CAUTION

PLEASE TAKE THE TIME TO READ THROUGH THE IMPORTANT INFORMATION BELOW BEFORE PROCEEDING TO FIT THIS PRODUCT



FAILURE TO TAKE NOTICE OF THE FOLLOWING INFORMATION MAY RESULT IN DAMAGE TO THE VEHICLE.



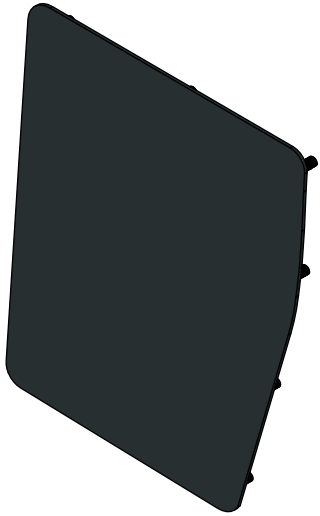
Important: Follow the instructions and all measurements carefully. Double check measurements before making any cuts. Drawings are for guidance only. Every effort has been made to ensure the accuracy of the instructions provided however Van Guard Accessories Ltd accepts no liability for any inaccuracies of either the drawings provided or vehicle variations. All bare metal should be treated with a manufacturer approved anti-corrosion compound and no liability is accepted for any incorrect installation or corrosion to body panels or within cavities. It is the sole responsibility of the installer to ensure the suitability of both the vehicle and of the supplied parts before installation is started. No liability is accepted for the fitting of the products.

This FITTING INSTRUCTION is the property of VAN GUARD ACCESSORIES LTD. and must not be used for manufacturing purposes, copied nor communicated in any way to third parties without written permission from VAN GUARD ACCESSORIES LTD.
IN9327_B (CN:00164)

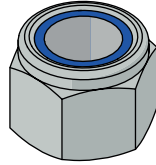
Van Guard Accessories Ltd
Fair Oak Close, Exeter Airport Business Park,
Exeter, Devon, EX5 2UL
www.van-guard.co.uk

SUPPLIED COMPONENTS

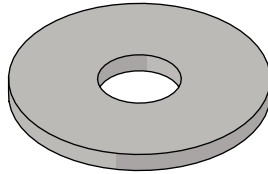
AS3558 X1
(SHIELD)



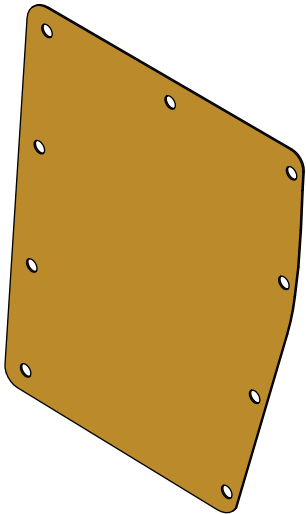
FX4004 X9
(M6 NYLOC)



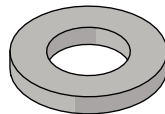
FX4013 X5
(M6 WASHER - LARGE)



MA6139 X1
(RUBBER GASKET)



FX4017 X4
(M6 WASHER - SMALL)



Wear the appropriate protective equipment (safety glasses & gloves) while fitting this product.



Dispose of packaging materials responsibly - Do not dispose until you have checked all parts and fixings are present.

FITTED IMAGE



1. ACCESS INSIDE OF DOOR

Remove the plastic panel to the rear edge of the side loading door. There are two clips to the forward edge, one to the top and one to the bottom. The rear edge is hooked over the metal.



2. POSITIONING THE SHIELD

1. Protect the area of the door where the shield will be fitted with masking tape.
2. Use the rubber gasket as a template to mark the hole positions. Make sure the gasket is orientated correctly with the yellow backing facing you. Move the gasket up and down until the gasket lines up with the door correctly. The rubber gasket is profiled 1.5mm smaller than the shield so it needs to be offset 1.5mm from the edge of the door.
3. Mark down the nine hole centres.
4. **With the door open**, carefully drill the fixings holes, using a 4mm pilot then opening to 8mm. Remove any swarf and treat bare metal with anti-corrosion spray.



TAKE CARE OF WHAT IS BEHIND THE DOOR WHEN DRILLING, USE AS SHORT A DRILL BIT AS POSSIBLE



3. FITTING THE SHIELD

Stick the rubber gasket to the outer shield and then place the shield in position and secure in place with M6 nyloc nuts and M6 washers. **Take care not to overtighten the nuts, tighten to 9Nm.** Once secure, refit the plastic panel removed in step 1.

