

**IN9341**

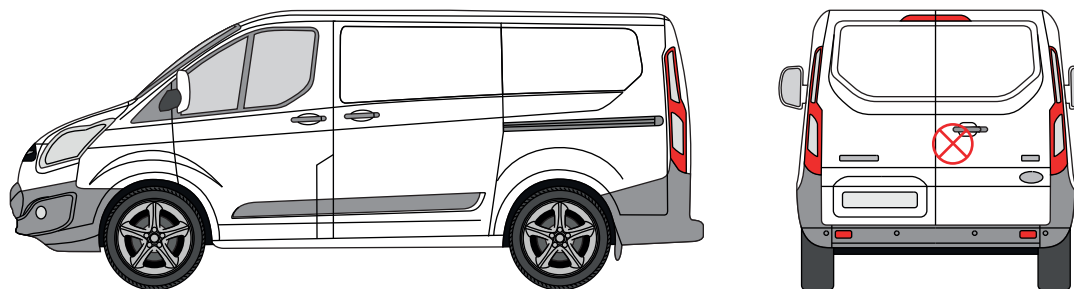
**External Handle Shield - Twin Rear Door**

**THANK YOU FOR PURCHASING A VAN GUARD EXTERNAL HANDLE SHIELD**

**SUITS THE FOLLOWING MODELS**

**Vehicle:**  
Ford Transit Custom 2013 on

**Door:**  
Rear - Twin



⊗ Indicates approximate placement of shield



**CAUTION**

**PLEASE TAKE THE TIME TO READ THROUGH THE IMPORTANT INFORMATION BELOW BEFORE PROCEEDING TO FIT THIS PRODUCT**



**FAILURE TO TAKE NOTICE OF THE FOLLOWING INFORMATION MAY RESULT IN DAMAGE TO THE VEHICLE.**



**Important:** Follow the instructions and all measurements carefully. Double check measurements before making any cuts. Drawings are for guidance only. Every effort has been made to ensure the accuracy of the instructions provided however Van Guard Accessories Ltd accepts no liability for any inaccuracies of either the drawings provided or vehicle variations. All bare metal should be treated with a manufacturer approved anti-corrosion compound and no liability is accepted for any incorrect installation or corrosion to body panels or within cavities. It is the sole responsibility of the installer to ensure the suitability of both the vehicle and of the supplied parts before installation is started. No liability is accepted for the fitting of the products.

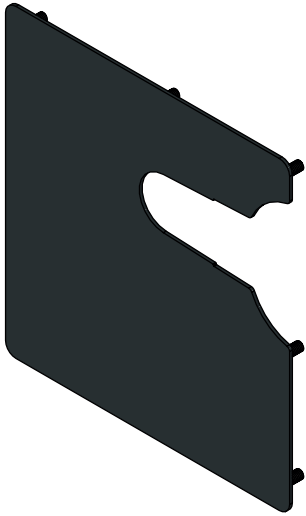
This FITTING INSTRUCTION is the property of VAN GUARD ACCESSORIES LTD. and must not be used for manufacturing purposes, copied nor communicated in any way to third parties without written permission from VAN GUARD ACCESSORIES LTD.

IN9341\_B (CN:00164)

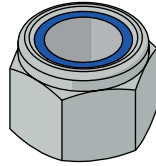
Van Guard Accessories Ltd  
Fair Oak Close, Exeter Airport Business Park,  
Exeter, Devon, EX5 2UL  
[www.van-guard.co.uk](http://www.van-guard.co.uk)

# SUPPLIED COMPONENTS

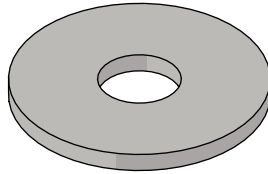
**AS3598 X1**  
(SHIELD)



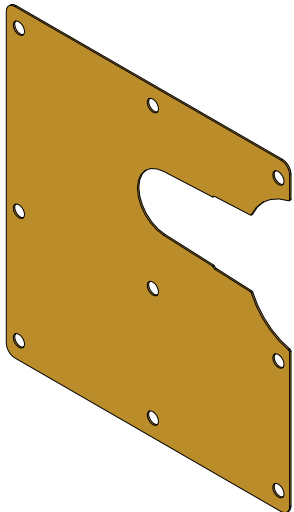
**FX4004 X9**  
(M6 NYLOC)



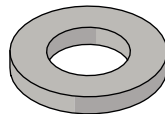
**FX4013 X6**  
(M6 WASHER - LARGE)



**MA6143 X1**  
(RUBBER GASKET)



**FX4017 X3**  
(M6 WASHER - SMALL)



Wear the appropriate protective equipment (safety glasses & gloves) while fitting this product.



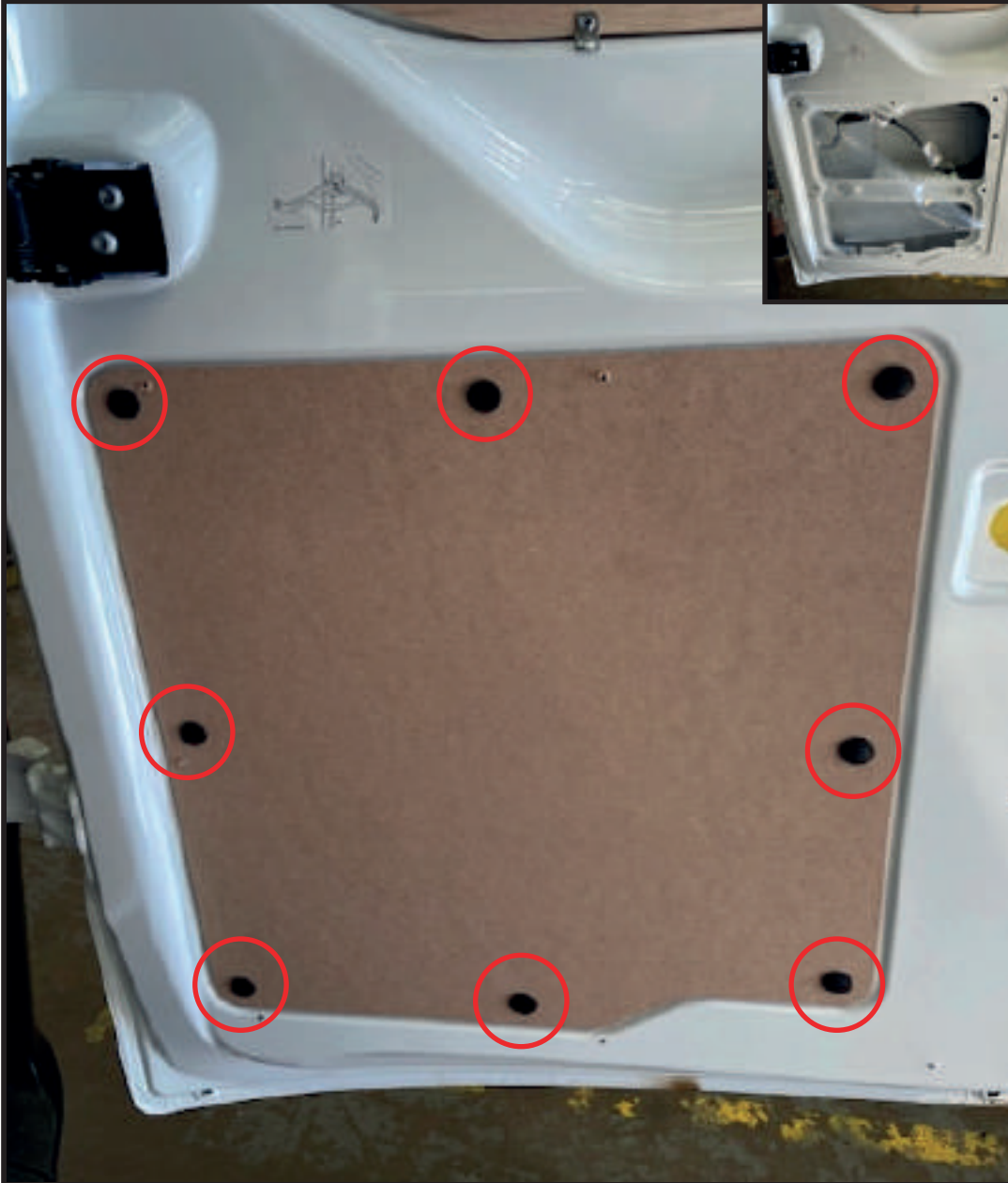
Dispose of packaging materials responsibly - Do not dispose until you have checked all parts and fixings are present.

# FITTED IMAGE



## 1. REMOVAL OF THE DOOR PANEL

Remove door panel by removing the panel clips, to remove clips pull out the centres. Peel back the plastic membrane to allow access to the door cavity.



## 2.1. EXTERNAL HANDLE REMOVAL

Remove the plastic cover/cap on the rear edge of the door to gain access to the T20 Torx head handle retaining screw. Note: This screw does not fully withdraw from the inner handle carrier. Loosen this screw until the small exterior handle section can be removed.



## 2.2. EXTERNAL HANDLE REMOVAL

1. Slide the handle towards the door latch and unclip the front end outward to remove from the door.
2. Remove the T25 Torx head screw from the outer door skin side to release the inner door handle carrier, and drop down inside the door. This will give you room to fit the shield.



## 3. POSITIONING THE SHIELD

1. Protect the area of the door where the shield will be fitted with masking tape.
2. Use the rubber gasket as a template to mark the hole positions. Make sure the gasket is orientated correctly with the yellow backing facing you. The rubber gasket is profiled 1.5mm smaller than the shield so it needs to be offset 1.5mm from the handle.
3. Mark down the nine hole centres.
4. **With the door open**, carefully drill the fixings holes, using a 4mm pilot then opening to 8mm. Remove any swarf and treat bare metal with anti-corrosion spray.



## 4. FITTING THE SHIELD

Stick the rubber gasket to the outer shield and then place the shield in position and secure in place with M6 nyloc nuts and M6 washers. **Take care not to overtighten the nuts, tighten to 9Nm.**



## 5. REFITTING HANDLE

Once the shield is secured, relocate the internal handle carrier, ensuring it is clipped to the outer door skin and held in place with the T25 Torx head screw detailed in point 2.2.

Refit the door handle and secure into place via the T20 Torx head screw, accessed through the aperture in the end of the door, as detailed in point 2.1.

Check the door closes and reopens smoothly, before refitting the internal trim panel.