



IN9350

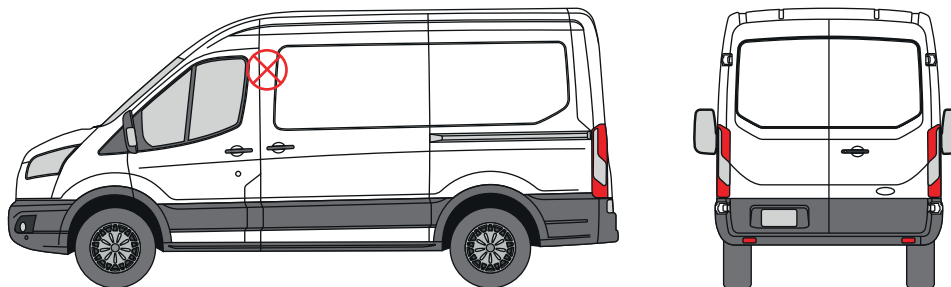
Anti-Peel - Sliding Door - Top


THANK YOU FOR PURCHASING A VAN GUARD ANTI-PEEL

SUITS THE FOLLOWING MODELS

Vehicle:
Ford Transit 2014 on

Door:
Sliding - Passenger's



 Indicates approximate placement of Anti-Peel



CAUTION

PLEASE TAKE THE TIME TO READ THROUGH THE IMPORTANT INFORMATION BELOW BEFORE PROCEEDING TO FIT THIS PRODUCT



FAILURE TO TAKE NOTICE OF THE FOLLOWING INFORMATION MAY RESULT IN DAMAGE TO THE VEHICLE.



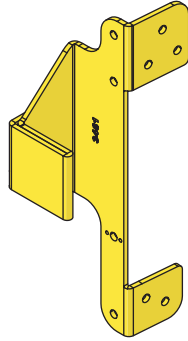
Important: Follow the instructions and all measurements carefully. Double check measurements before making any cuts. Drawings are for guidance only. Every effort has been made to ensure the accuracy of the instructions provided however Van Guard Accessories Ltd accepts no liability for any inaccuracies of either the drawings provided or vehicle variations. All bare metal should be treated with a manufacturer approved anti-corrosion compound and no liability is accepted for any incorrect installation or corrosion to body panels or within cavities. It is the sole responsibility of the installer to ensure the suitability of both the vehicle and of the supplied parts before installation is started. No liability is accepted for the fitting of the products.

This FITTING INSTRUCTION is the property of VAN GUARD ACCESSORIES LTD. and must not be used for manufacturing purposes, copied nor communicated in any way to third parties without written permission from VAN GUARD ACCESSORIES LTD.
IN9350_B (CN:00107)

Van Guard Accessories Ltd
Fair Oak Close, Exeter Airport Business Park,
Exeter, Devon, EX5 2UL
www.van-guard.co.uk

SUPPLIED COMPONENTS

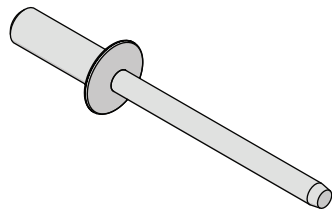
ME3461 X1
(STRIKE BRACKET)



ME3463 X1
(RECEIVING BRACKET)



FX4153 X9
(DOME HEAD STEEL RIVET - 4.8 X 18)



Wear the appropriate protective equipment (safety glasses & gloves) while fitting this product.



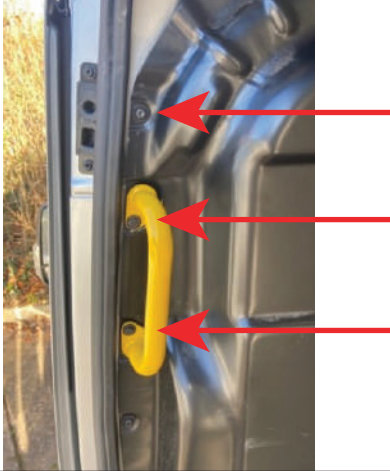
Dispose of packaging materials responsibly - Do not dispose until you have checked all parts and fixings are present.

FITTED IMAGE



1. INSTALLING RECEIVING BRACKET

The top receiving bracket locates behind the existing grab handle on the vehicle bulkhead.



2. INSTALLING RECEIVING BRACKET

Start by installing the top receiving bracket, which fits above the existing yellow grab handle. Using a T27 Torx bit, remove the bulkhead bolt immediately above the handle, and retain for refitting.

Next, remove the top nut of the yellow handle (10mm socket) and loosen the lower one.

REMOVE

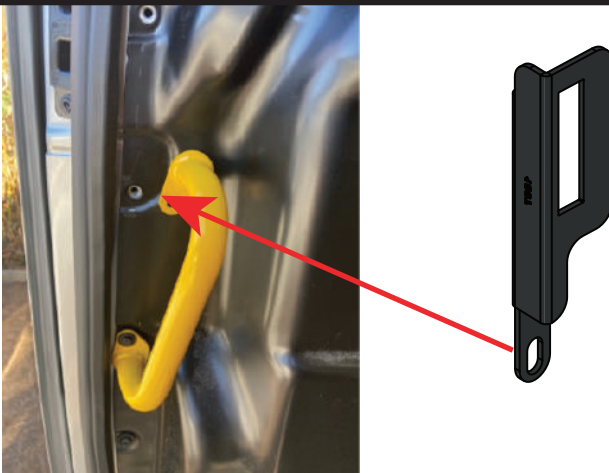
REMOVE

LOOSEN



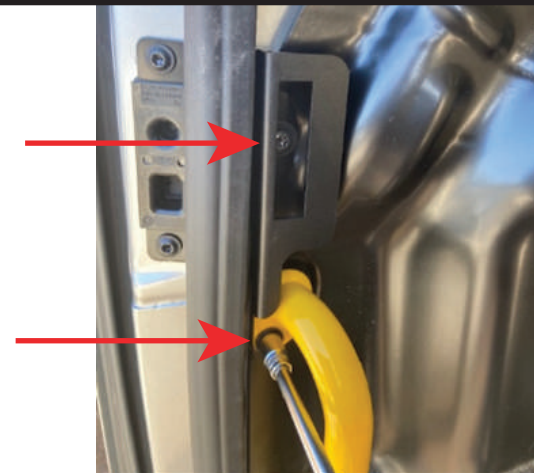
3. INSTALLING RECEIVING BRACKET

Once the handle is loosened, slide the receiving bracket into place, with the lower fixing hole behind the grab handle.



4. INSTALLING RECEIVING BRACKET

Refit the handle using the 10mm bolt, and fix the receiving bracket into place by refitting the Torx head bolt through the bracket aperture. *Sometimes the original bolt holes in the factory bulkhead slightly obscure the threaded insert in the pillar, so it may be necessary to open out the hole in the bulkhead to allow the handle and bracket to be refitted.*



5. INSTALLING STRIKE BRACKET

Once the receiving bracket is secured into place, temporarily attach the strike bracket to the door, to assess the correct fitting position. Ensure the tongue of the strike bracket fits smoothly into the receiving aperture and does not foul during either closing or opening of the door.



6. INSTALLING STRIKE BRACKET

When you are happy the bracket is in the correct position, mark out and drill the fixings holes in the strike bracket, taking care when drilling towards the outer door skin. Use a suitable rust prevention wax to protect the paintwork and fix the bracket into place using the rivets provided.



7. FINISHING NOTES

Once both brackets are fixed into position, check the door operation to ensure the brackets align, and remove any swarf from drilling. If necessary, loosen the receiving bracket and realign with the strike bracket (the holes are slotted to allow for variance/adjustment).

