

IN9381

External Shield - Sliding Door

THANK YOU FOR PURCHASING A VAN GUARD EXTERNAL SHIELD

SUITS THE FOLLOWING MODELS

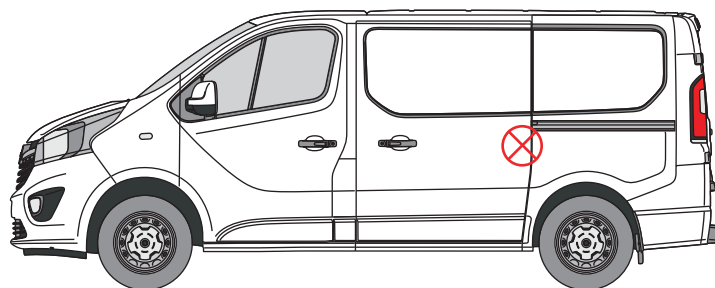
Vehicle:

Vauxhall Vivaro 2014 - 2019
Renault Trafic 2014 onwards
Nissan NV300 2016 - 2021
Nissan Primastar 2022 onwards
Fiat Talento 2016 - 2020

Door:

Sliding - Passenger's

⊗ Indicates approximate placement of shield

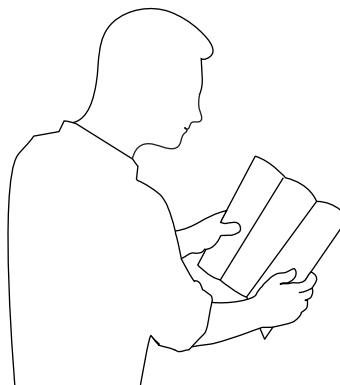


CAUTION

PLEASE TAKE THE TIME TO READ THROUGH THE IMPORTANT INFORMATION BELOW BEFORE PROCEEDING TO FIT THIS PRODUCT



FAILURE TO TAKE NOTICE OF THE FOLLOWING INFORMATION MAY RESULT IN DAMAGE TO THE VEHICLE.



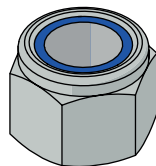
Important: Follow the instructions and all measurements carefully. Double check measurements before making any cuts. Drawings are for guidance only. Every effort has been made to ensure the accuracy of the instructions provided however Van Guard Accessories Ltd accepts no liability for any inaccuracies of either the drawings provided or vehicle variations. All bare metal should be treated with a manufacturer approved anti-corrosion compound and no liability is accepted for any incorrect installation or corrosion to body panels or within cavities. It is the sole responsibility of the installer to ensure the suitability of both the vehicle and of the supplied parts before installation is started. No liability is accepted for the fitting of the products.

SUPPLIED COMPONENTS

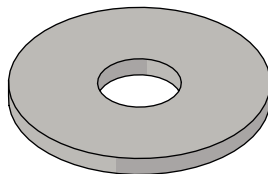
AS3628 X1
(SHIELD)



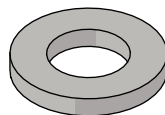
FX4004 X10
(M6 NYLOC)



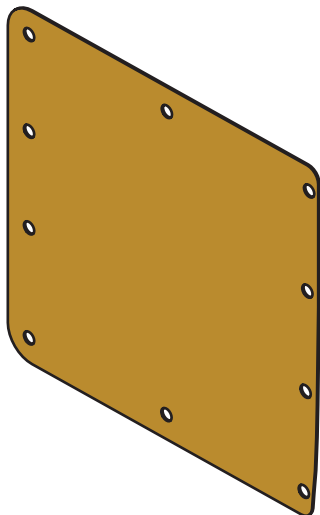
FX4013 X6
(M6 WASHER - LARGE)



FX4017 X4
(M6 WASHER - SMALL)



MA6159 X1
(RUBBER GASKET)



Wear the appropriate protective equipment (safety glasses & gloves) while fitting this product.



Dispose of packaging materials responsibly - Do not dispose until you have checked all parts and fixings are present.

FITTED IMAGE



1. REMOVAL OF INTERNAL RELEASE LEVER

Leave the rear door open while carrying out this installation.

Remove the internal release lever. This is refitted at the end of the installation when refitting the door panel.



2. REMOVAL OF DOOR PANEL

Remove the door panel cover using a plastic trim removal tool. This is refitted at the end of the installation.



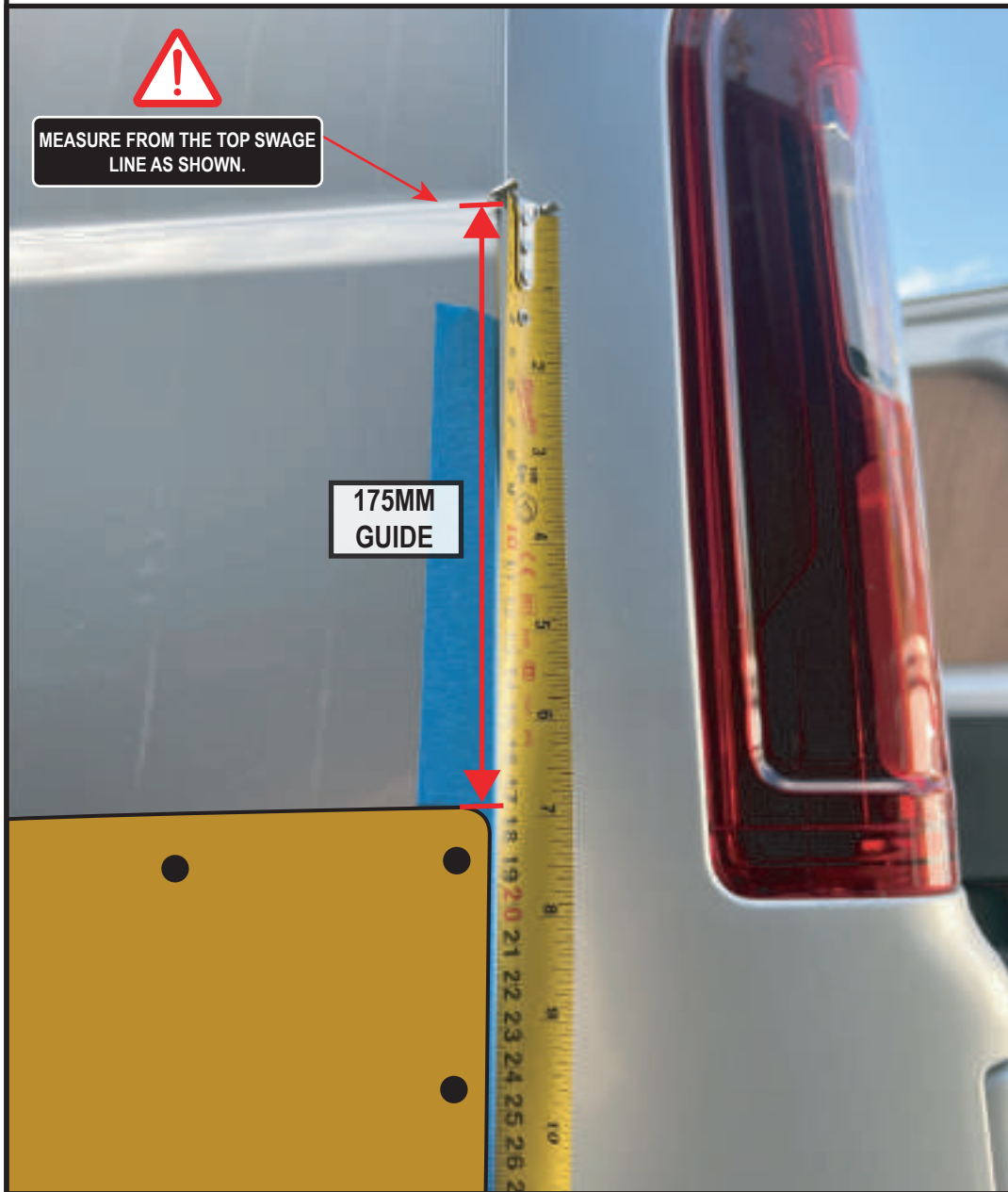
3. REMOVAL OF SOUND PROOFING

Carefully remove the sound proofing. This is refitted at the end of the installation when refitting the door panel.



4. SHIELD LOCATION

1. Protect the area of the door where the shield will be fitted with masking tape.
2. Measure 175mm down from the window aperture as shown and mark this location, this is where the top of the rubber gasket will be positioned.

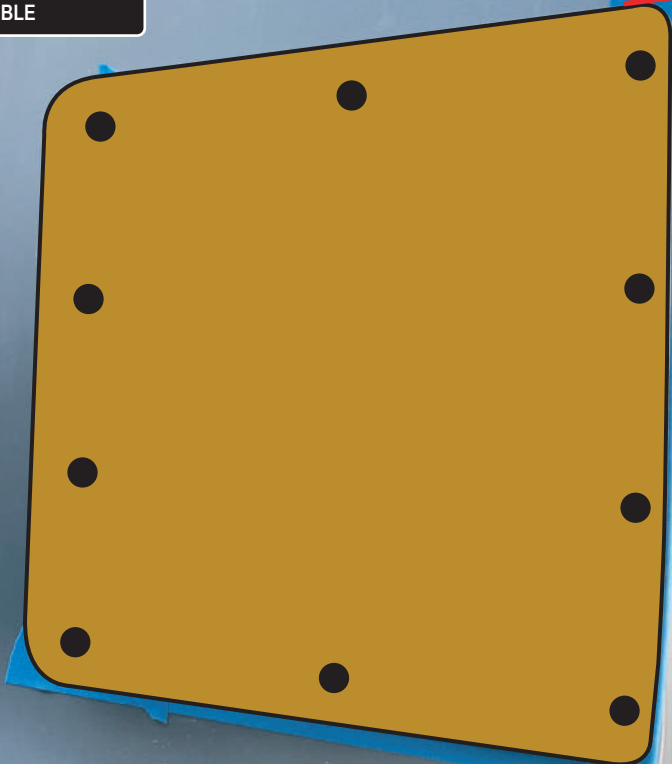


5. POSITIONING THE SHIELD

1. Align the top of the gasket with the mark made in step 4.
2. Use the rubber gasket as a template to mark the hole positions. Make sure the gasket is orientated correctly with the yellow backing facing you. The rubber gasket is profiled 1.5mm smaller than the shield so it needs to be offset 1.5mm from the edge of the door.
3. Mark down the ten hole centres.
4. **With the door open**, carefully drill the fixings holes, using a 4mm pilot then opening to 8mm. Remove any swarf and treat bare metal with anti-corrosion spray.



TAKE CARE OF WHAT IS BEHIND THE DOOR WHEN DRILLING, USE AS SHORT A DRILL BIT AS POSSIBLE



6. FITTING THE SHIELD

Stick the rubber gasket to the outer shield and then place the shield in position and secure in place with M6 nyloc nuts and M6 washers. **Take care not to overtighten the nuts, tighten to 9Nm.** Once secure, refit the plastic panel removed in steps 1-3.



USE THE FOUR SMALLER WASHERS (FX4017) ON THE OUTSIDE EDGE OF THE DOOR AS SHOWN