



IN9367

Anti-Peel - Sliding Door - Top

THANK YOU FOR PURCHASING A VAN GUARD ANTI-PEEL

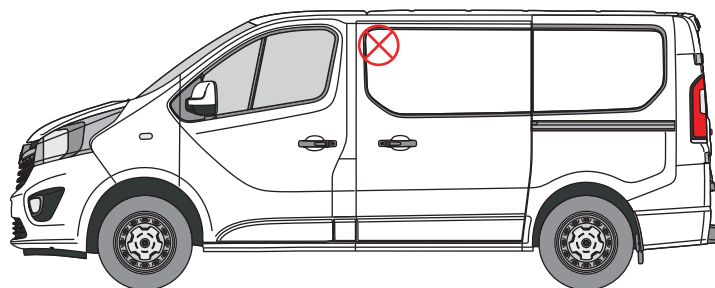
SUITS THE FOLLOWING MODELS

Vehicle:

- Vauxhall Vivaro 2014 - 2019
- Renault Trafic 2014 onwards
- Nissan NV300 2016 - 2021
- Nissan Primastar 2022 onwards
- Fiat Talento 2016 - 2020

Door: Sliding - Passenger's

⊗ Indicates approximate placement of Anti-Peel



CAUTION

PLEASE TAKE THE TIME TO READ THROUGH THE IMPORTANT INFORMATION BELOW BEFORE PROCEEDING TO FIT THIS PRODUCT



FAILURE TO TAKE NOTICE OF THE FOLLOWING INFORMATION MAY RESULT IN DAMAGE TO THE VEHICLE.



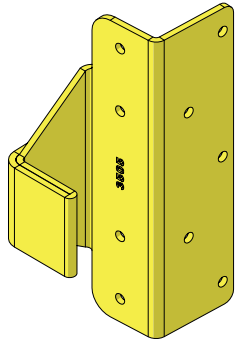
Important: Follow the instructions and all measurements carefully. Double check measurements before making any cuts. Drawings are for guidance only. Every effort has been made to ensure the accuracy of the instructions provided however Van Guard Accessories Ltd accepts no liability for any inaccuracies of either the drawings provided or vehicle variations. All bare metal should be treated with a manufacturer approved anti-corrosion compound and no liability is accepted for any incorrect installation or corrosion to body panels or within cavities. It is the sole responsibility of the installer to ensure the suitability of both the vehicle and of the supplied parts before installation is started. No liability is accepted for the fitting of the products.

This FITTING INSTRUCTION is the property of VAN GUARD ACCESSORIES LTD. and must not be used for manufacturing purposes, copied nor communicated in any way to third parties without written permission from VAN GUARD ACCESSORIES LTD.
IN9367_A

Van Guard Accessories Ltd
Fair Oak Close, Exeter Airport Business Park,
Exeter, Devon, EX5 2UL
www.van-guard.co.uk

SUPPLIED COMPONENTS

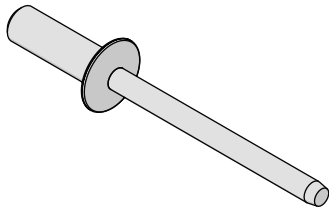
ME3505 X1
(STRIKE BRACKET)



ME3506 X1
(RECEIVING BRACKET)



FX4153 X9
(DOME HEAD STEEL RIVET - 4.8 X 17.1)



Wear the appropriate protective equipment (safety glasses & gloves) while fitting this product.



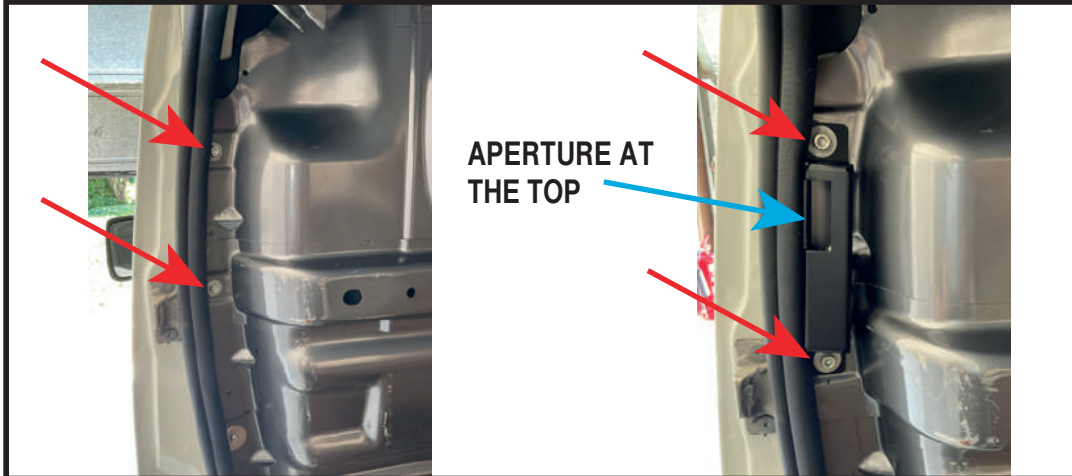
Dispose of packaging materials responsibly - Do not dispose until you have checked all parts and fixings are present.

FITTED IMAGE



1. INSTALLING RECEIVING BRACKET

1. The receiving bracket locates using the existing screws, start by removing the screws.
2. Place the receiving bracket into position with the aperture at the top and loosely secure into place reusing the screws.



2. POSITIONING BRACKETS

Temporarily position both brackets to assess their correct positions ensuring the tongue of the strike bracket fits smoothly into the receiving aperture and does not foul during either closing or opening of the door. Once you are happy the brackets are in the correct location tighten the receiving bracket screws and proceed to step 3.



3. INSTALLING STRIKE BRACKET

Mark and drill the fixings holes using a 4.8mm drill. Note, some of these fixings maybe into double skin so take care when drilling. Use a suitable rust prevention wax to protect the paintwork and fix the bracket into place using the rivets provided.



4. FINISHING NOTES

Once both brackets are fixed into position, check the door operation to ensure the brackets align, and remove any swarf from drilling.

