

IN9393

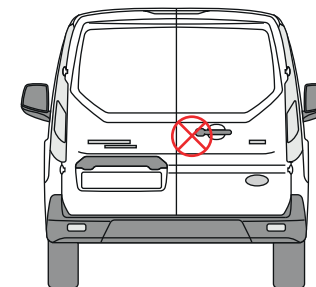
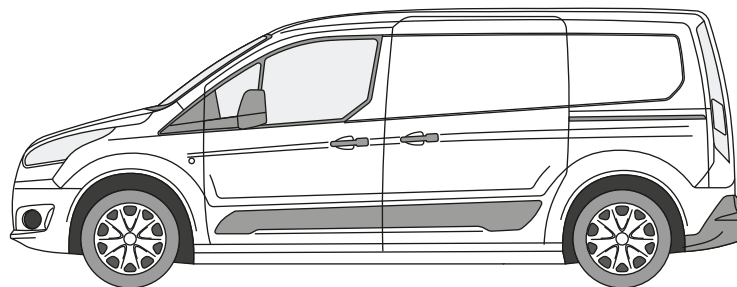
External Shield - Twin Rear Door

THANK YOU FOR PURCHASING A VAN GUARD EXTERNAL SHIELD

SUITS THE FOLLOWING MODELS

Vehicle:
Ford Transit Connect 2014 on

Door:
Rear - Twin



⊗ Indicates approximate placement of shield

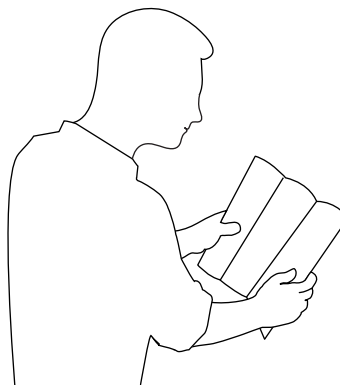


CAUTION

PLEASE TAKE THE TIME TO READ THROUGH THE IMPORTANT INFORMATION BELOW BEFORE PROCEEDING TO FIT THIS PRODUCT



FAILURE TO TAKE NOTICE OF THE FOLLOWING INFORMATION MAY RESULT IN DAMAGE TO THE VEHICLE.



Important: Follow the instructions and all measurements carefully. Double check measurements before making any cuts. Drawings are for guidance only. Every effort has been made to ensure the accuracy of the instructions provided however Van Guard Accessories Ltd accepts no liability for any inaccuracies of either the drawings provided or vehicle variations. All bare metal should be treated with a manufacturer approved anti-corrosion compound and no liability is accepted for any incorrect installation or corrosion to body panels or within cavities. It is the sole responsibility of the installer to ensure the suitability of both the vehicle and of the supplied parts before installation is started. No liability is accepted for the fitting of the products.

This FITTING INSTRUCTION is the property of VAN GUARD ACCESSORIES LTD. and must not be used for manufacturing purposes, copied nor communicated in any way to third parties without written permission from VAN GUARD ACCESSORIES LTD.

IN9393_A (CN:NR)

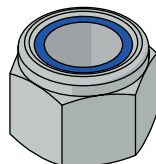
Van Guard Accessories Ltd
Fair Oak Close, Exeter Airport Business Park,
Exeter, Devon, EX5 2UL
www.van-guard.co.uk

SUPPLIED COMPONENTS

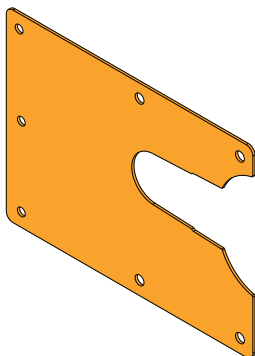
AS3643 X1
(SHIELD)



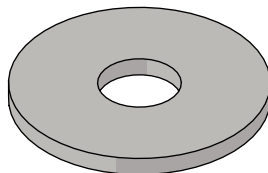
FX4004 X4
(M6 NYLOC)



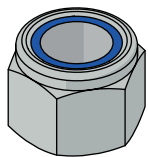
MA6162 X1
(RUBBER GASKET)



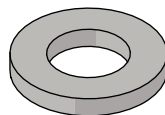
FX4013 X4
(M6 WASHER - LARGE)



FX4111 X3
(M5 MYLOC)



FX4017 X3
(M6 WASHER - SMALL)



Wear the appropriate protective equipment (safety glasses & gloves) while fitting this product.



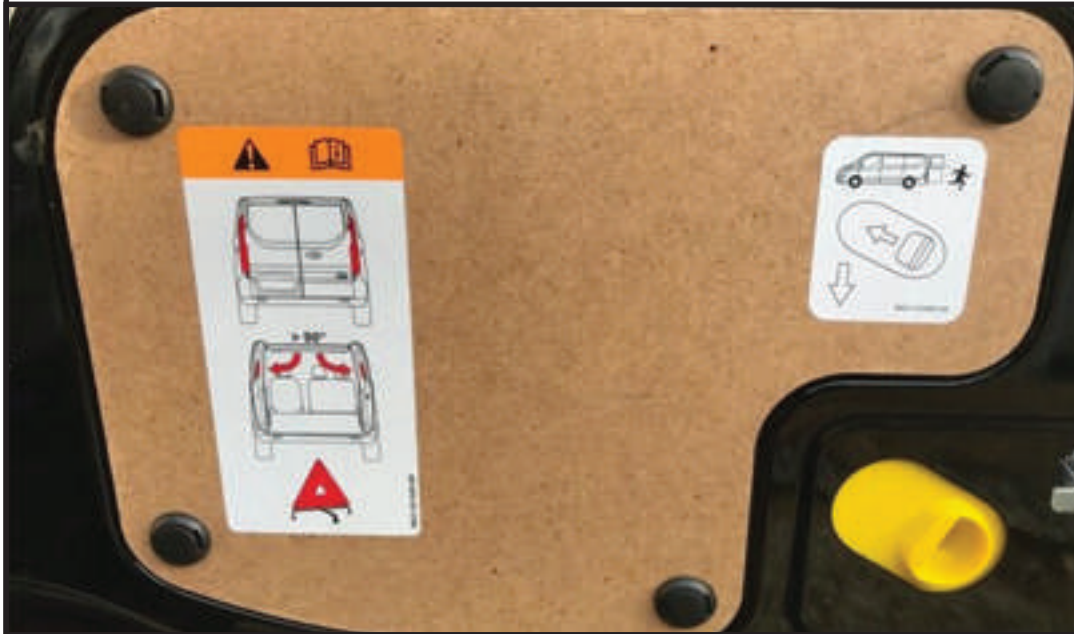
Dispose of packaging materials responsibly - Do not dispose until you have checked all parts and fixings are present.

FITTED IMAGE



1. REMOVAL OF THE DOOR PANEL

1. Remove door panel by removing the panel clips, to remove clips pull out the centres.
2. Carefully remove the sound proofing from under the door panel.



2. POSITIONING THE SHIELD

1. Protect the area of the door where the shield will be fitted with masking tape.
2. Use the rubber gasket as a template to mark the hole positions. Make sure the gasket is orientated correctly with the yellow backing facing you. The rubber gasket is profiled 1.5mm smaller than the shield so it needs to be offset 1.5mm from the edge of the door.
3. Mark down the eight hole centres.
4. **With the door open**, carefully drill the fixings holes, using a 4mm pilot then opening the 4 x M6 holes to 8mm and the 3 x M5 holes to 7mm. Remove any swarf and treat bare metal with anti-corrosion spray.



3. FITTING THE SHIELD

Stick the rubber gasket to the outer shield and then place the shield in position. Secure in place with the 3 x M5 nyloc nuts and 3 x small washers on the edge of the door and the 4 x M6 nyloc nuts and 4 x large washers on the remaining studs. **Take care not to over-tighten the nuts, tighten M5 to 4Nm & M6 to 9Nm.** Once fitted, refit the door panel.

