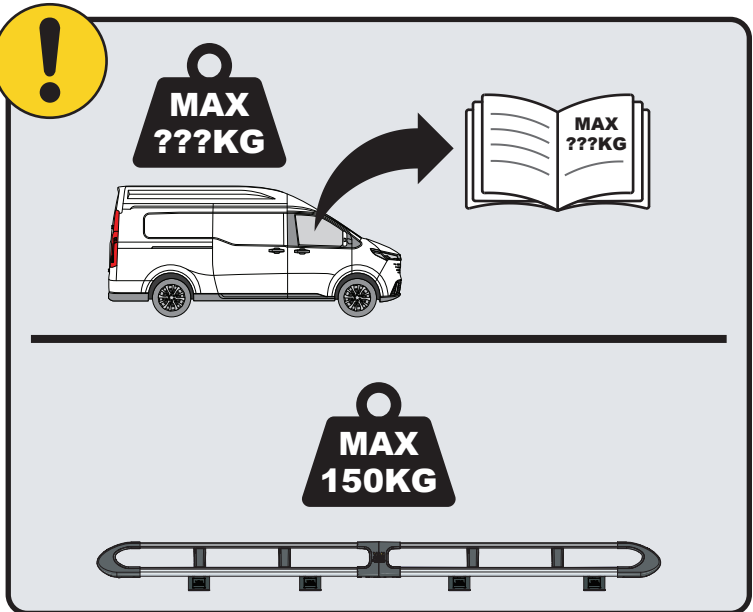
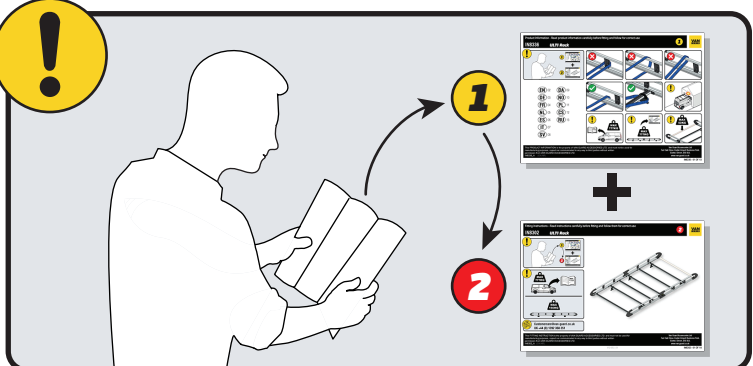


IN8482

ULTI Rack+



 Customercare@van-guard.co.uk
UK +44 (0) 1392 368 351



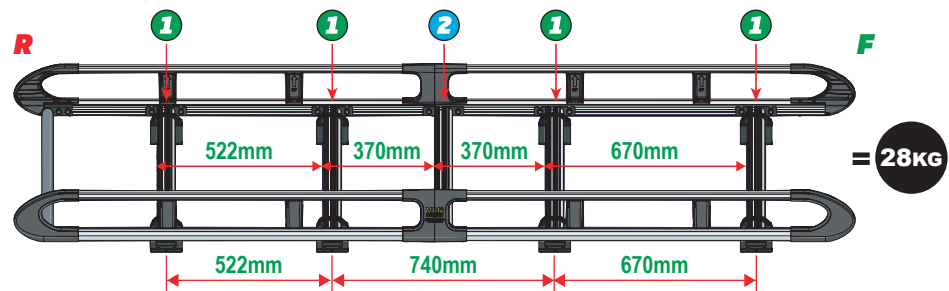
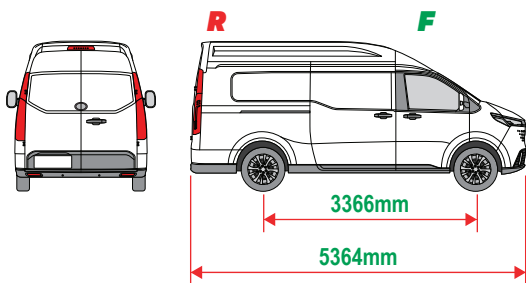
This FITTING INSTRUCTION is the property of VAN GUARD ACCESSORIES LTD. and must not be used for manufacturing purposes, copied nor communicated in any way to third parties without written permission from VAN GUARD ACCESSORIES LTD.
IN8482_B (CN:01115)

Van Guard Accessories Ltd
Fair Oak Close, Exeter Airport Business Park,
Exeter, Devon, EX5 2UL
www.van-guard.co.uk

THIS INSTRUCTION COVERS THE FOLLOWING MODELS - CHECK YOU ARE FITTING THE CORRECT MODEL BEFORE PROCEEDING

VGUR-317

Maxus Deliver 7: 2023 on
L2H2
Twin Rear Doors



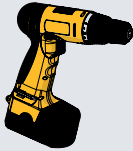
SUPPLIED COMPONENTS - CHECK ALL PARTS ARE PRESENT AND CORRECT BEFORE PROCEEDING (1 OF 2)

TOOLS REQUIRED

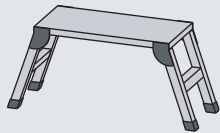
10MM X2



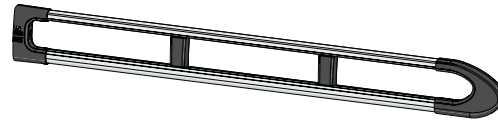
13MM X2



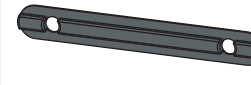
Ø4 & Ø9



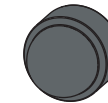
AS3537 X2
(2600 / A)



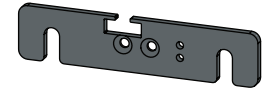
MA6118 X10



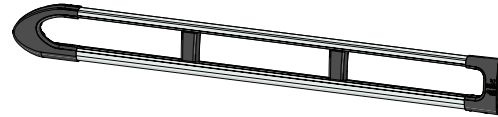
FX4241 X24



ME1622 X1



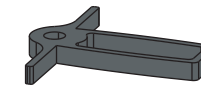
AS3536 X2
(2600 / B)



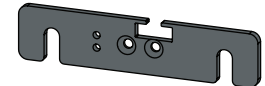
FX4008 X1



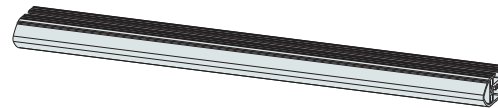
MA6145 X1



ME1623 X1



ME1627 X5
(1354mm)



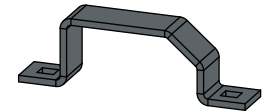
FX4001 X2
(M8X40)



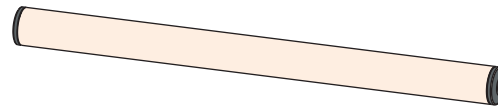
FX4235 X20
(M5X25)



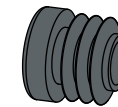
ME0203 X8



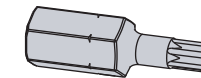
AS3159 X1
(1340mm)



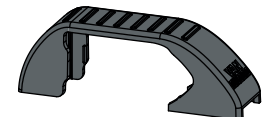
MA6007 X4



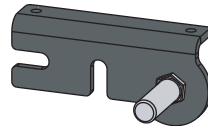
FX4248 X1
(T25)



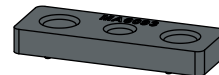
MA6065 X8



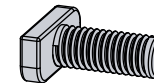
AS3590 X1



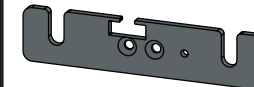
MA6093 X10



FX4239 X24
(M8X20)



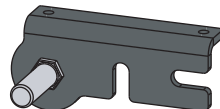
ME1620 X4



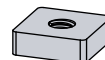
FX4016 X16
(M6)



AS3591 X1



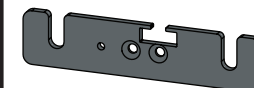
ME0316 X10



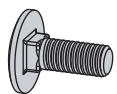
FX4240 X24
(M8)



ME1621 X4

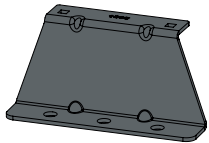


FX4042 X16
(M6X16)



SUPPLIED COMPONENTS - CHECK ALL PARTS ARE PRESENT AND CORRECT BEFORE PROCEEDING (2 OF 2)

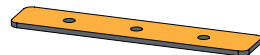
ME1669 X4



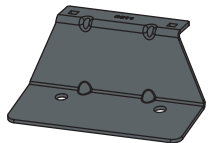
AS3855 X6



MA6136 X10



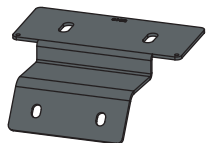
ME2611 X2



FX4011 X8
(M8)



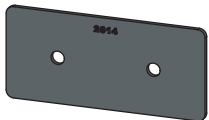
ME2613 X2



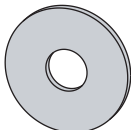
FX4014 X10
(RUBBER)



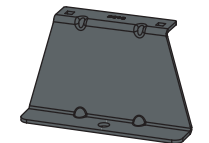
ME2614 X2



FX4040 X18
(M8)



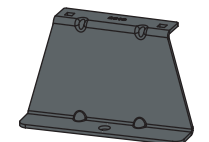
ME2618 X1



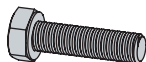
FX4019 X10
(M8)



ME2619 X1

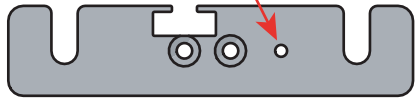


FX4039 X14
(M8X30)



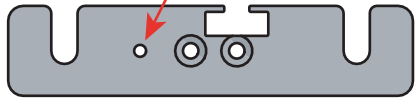
01

1L



X4

1R



X4

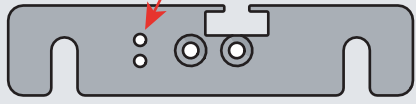


2L



X1

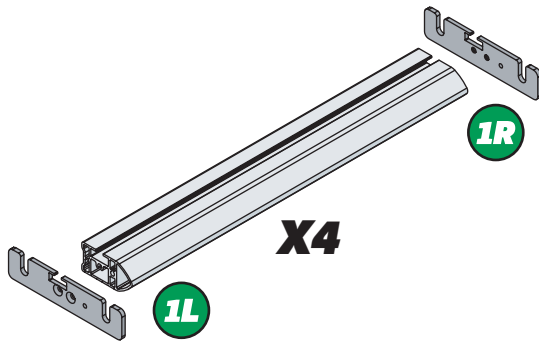
2R



X1

02

1R

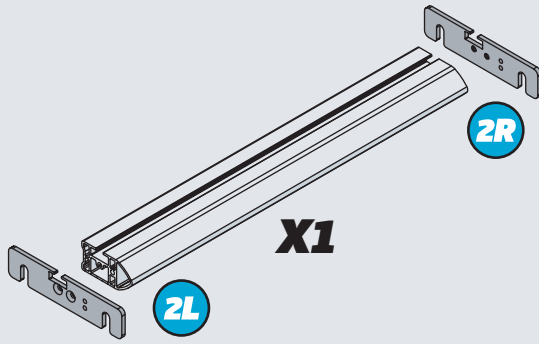


X4

1L



2R



X1

2L



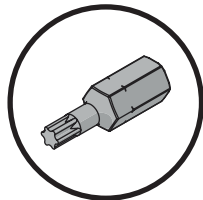
03

01

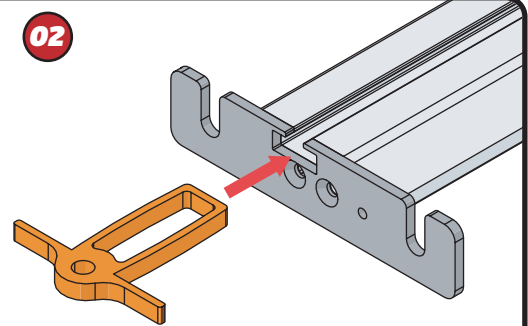
FX4248



+



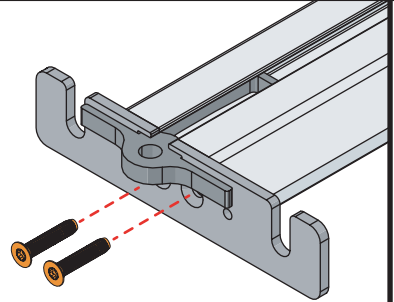
02



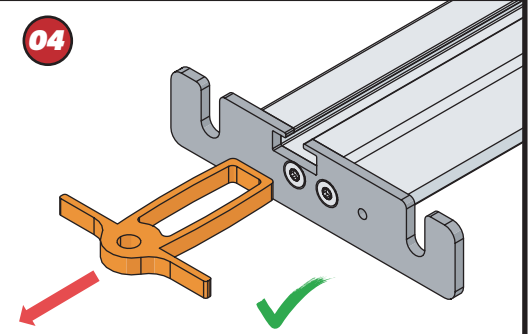
03



11Nm



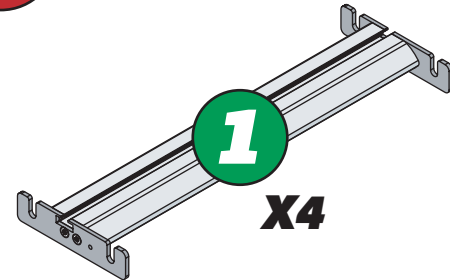
04



04

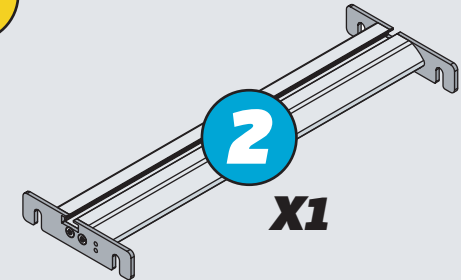


1

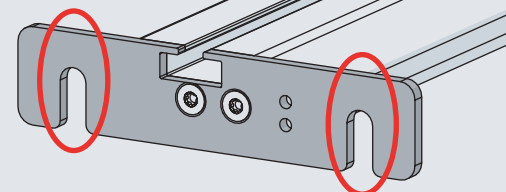
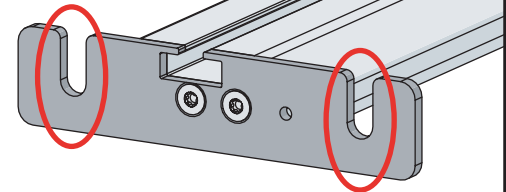


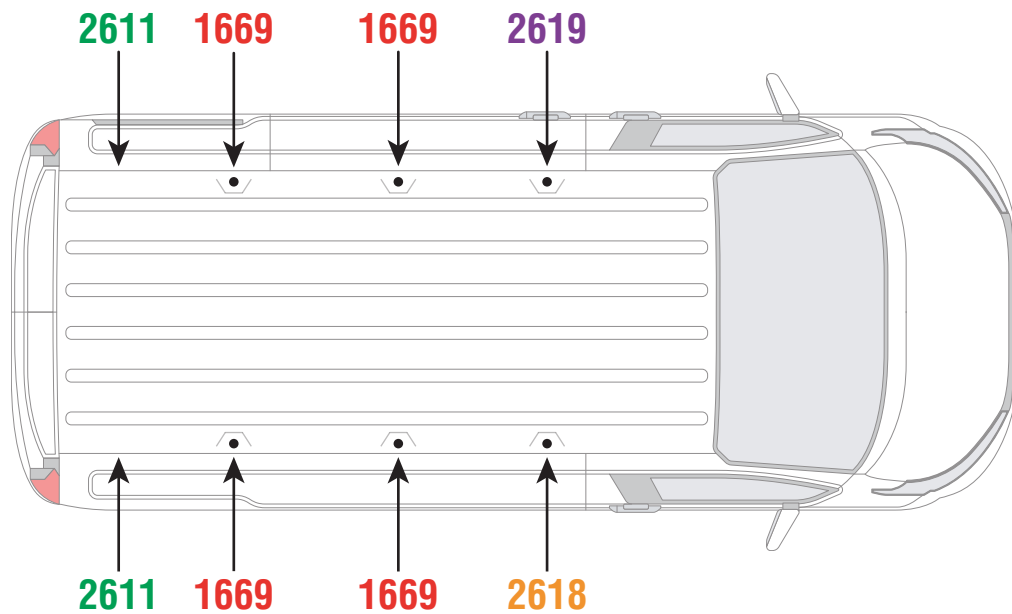
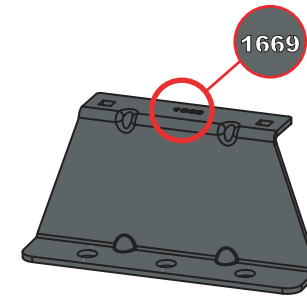
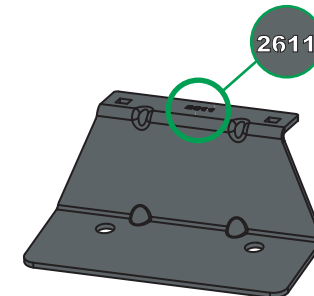
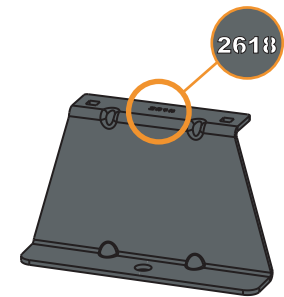
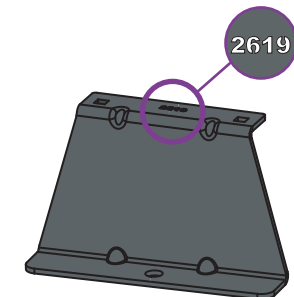
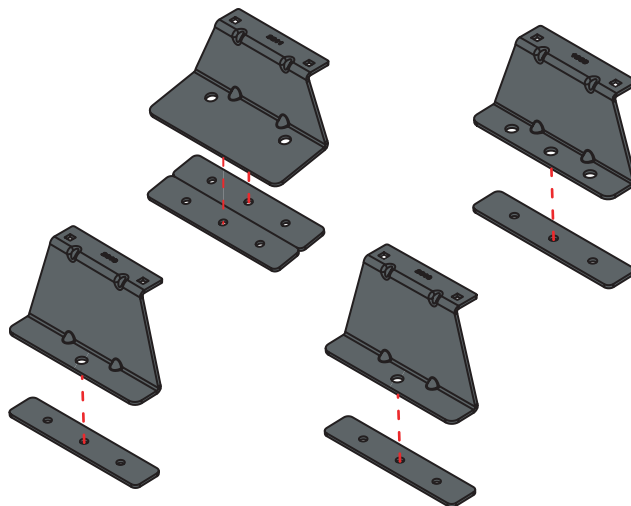
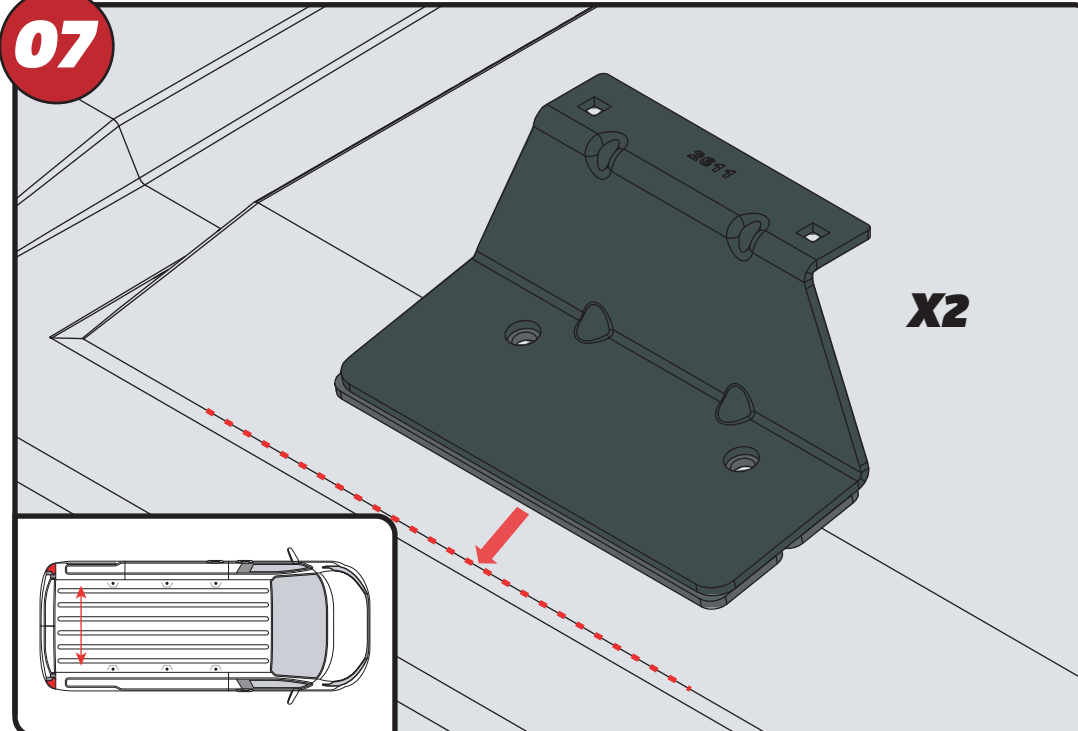
X4

2



X1



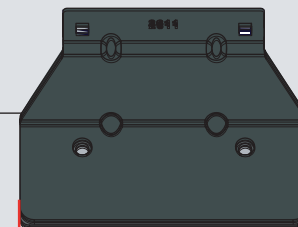
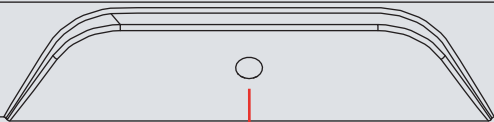
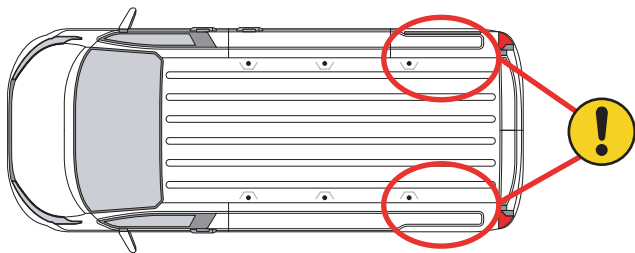
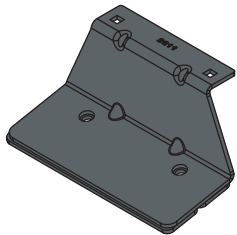
05**1669****2611****2618****2619****06****07**

EN - STICK GASKETS TO ALL BRACKETS
 DE - KLEBEN SIE DIE DICHTUNG AN ALLEN HALTERUNGEN
 FR - COUSSINETS ADHÉSIFS À TOUS LES SUPPORTS
 NL - PLAK PAKKING OP ALLE BEUGELS
 ES - PEGA LAS ALMOHADILLAS A TODOS LOS SOPORTES
 IT - ADESIVI GUARNIZIONI A TUTTE LE STAFFE

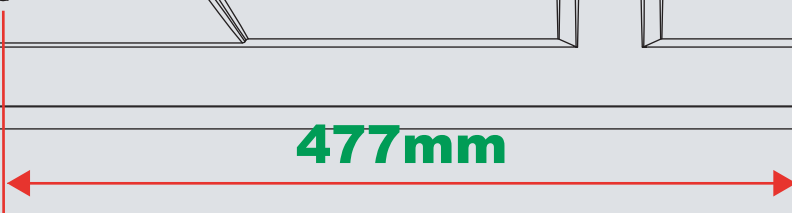
SV - FÄST GUMMI PÅ ALLA FÄSTEN
 DA - KLÆB GUMMI PÅ ALLE BESLAG
 NO - PLIST GUMMI PÅ ALLE BRAKKETTER
 PL - NAKLEJ USZCZELKI DO WSZYSTKICH WSPORNIKÓW
 CS - PŘILEPTE TĚSNĚNÍ NA VŠECHNY DRŽÁKY

08

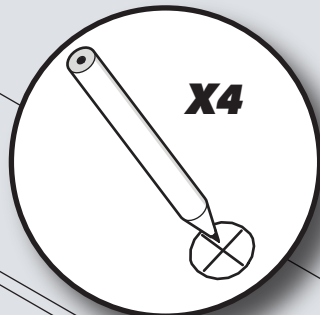
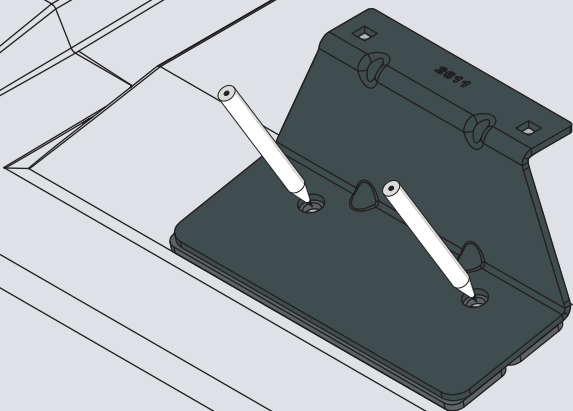
X2



477mm

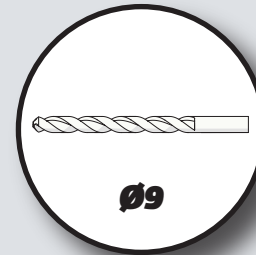
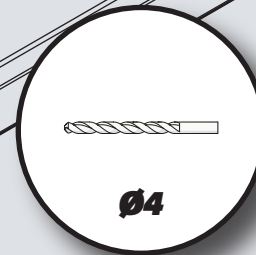
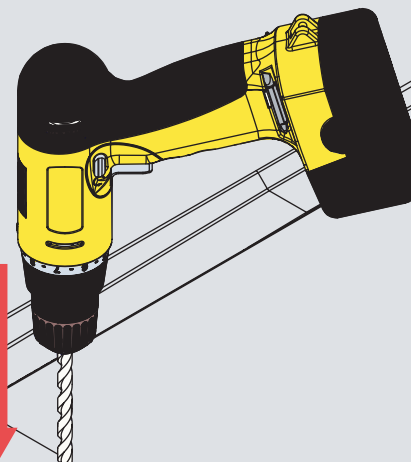


09

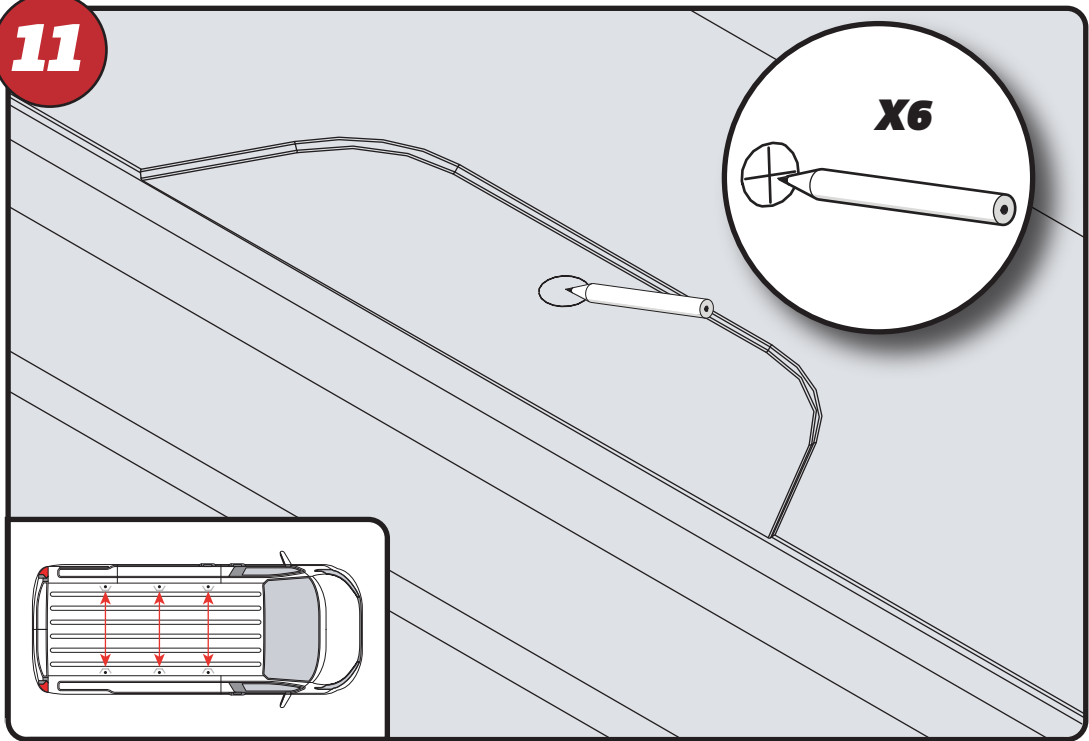


10

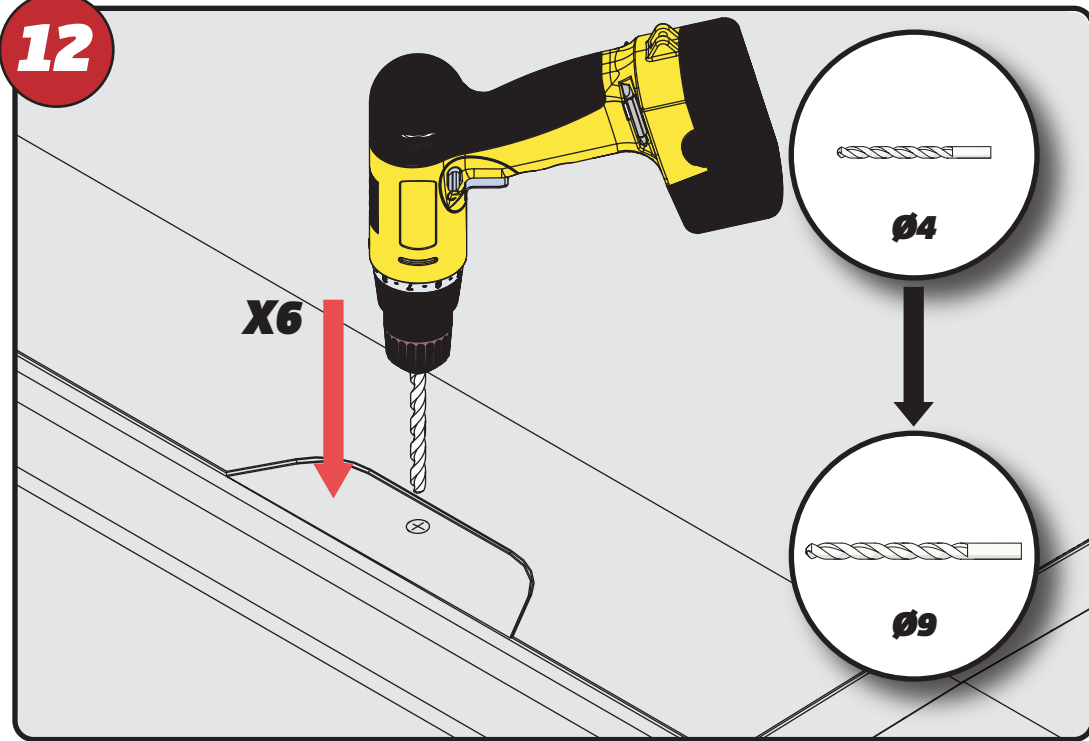
X4



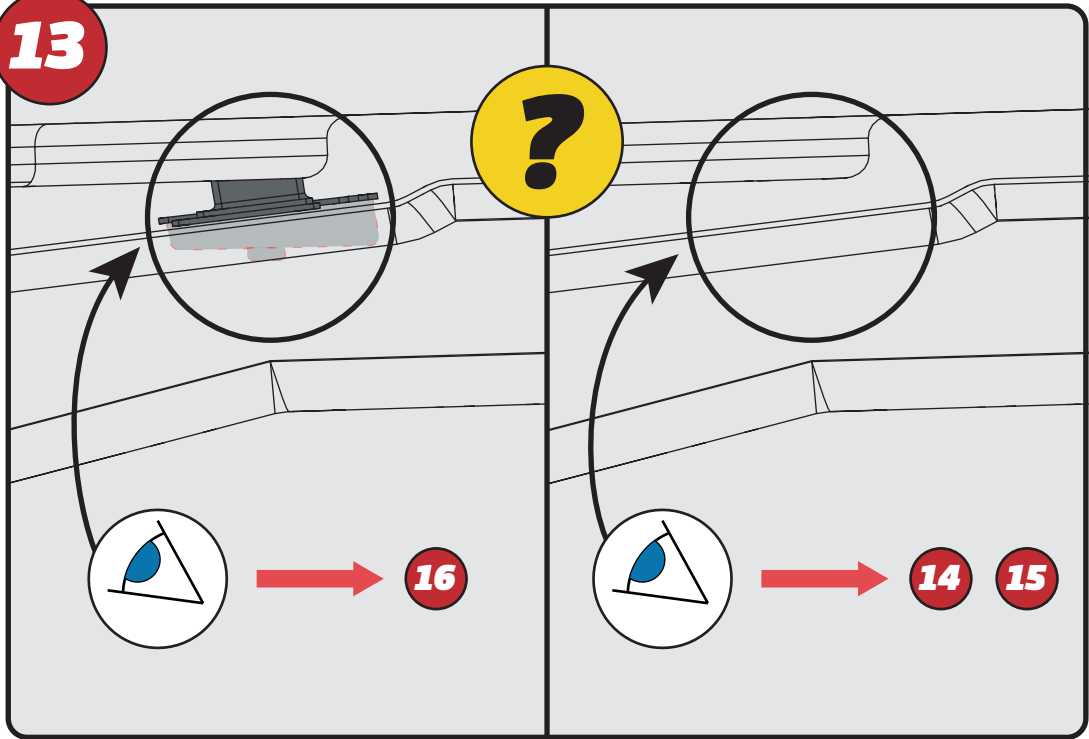
11



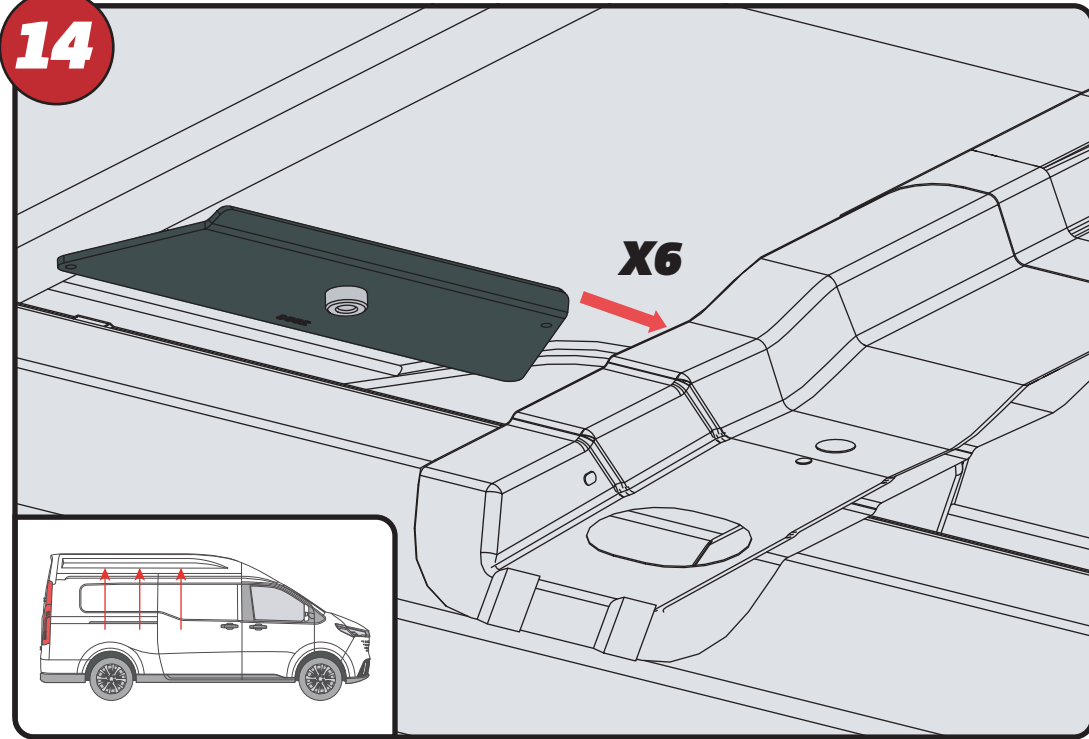
12



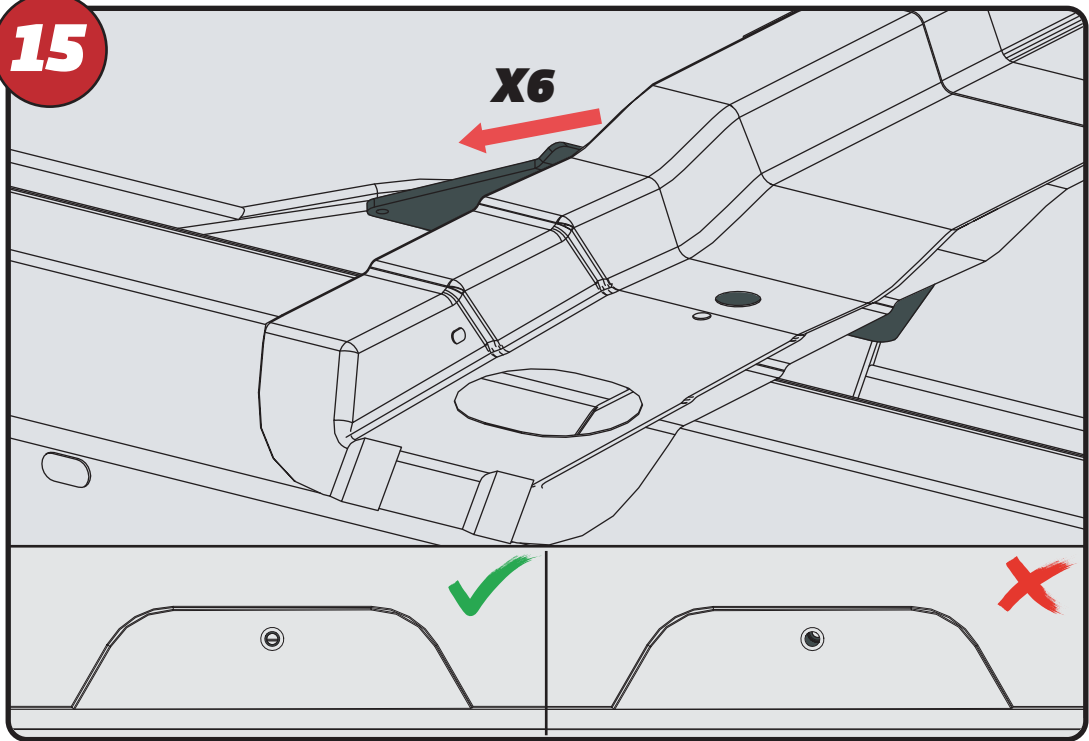
13



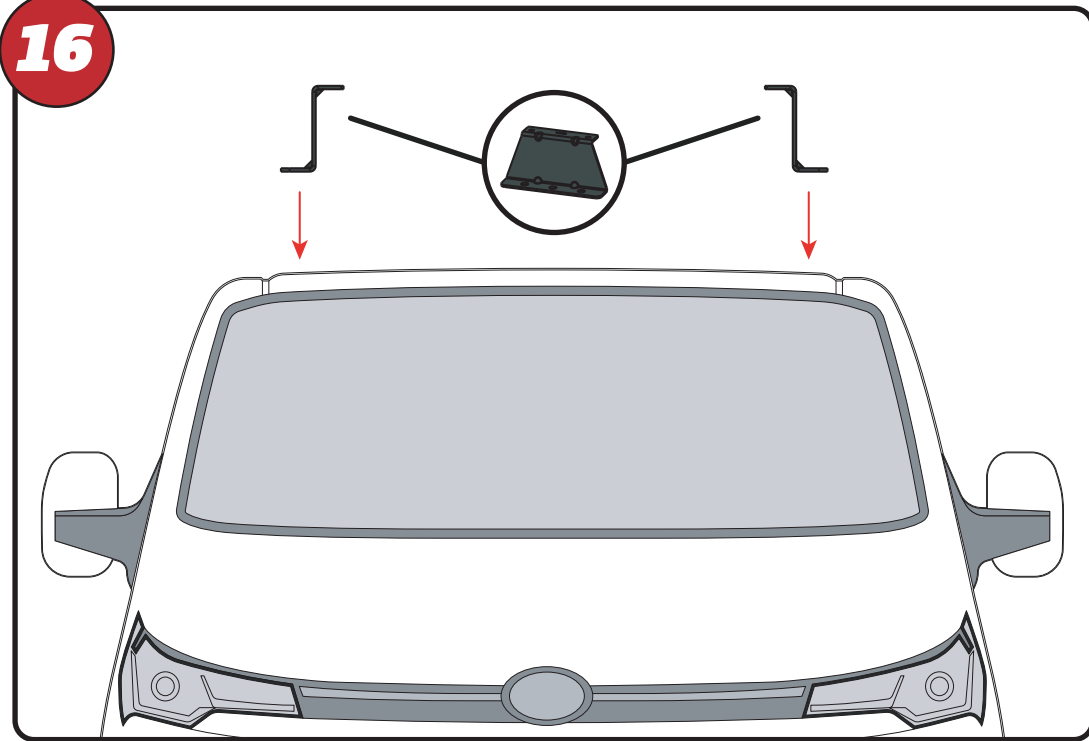
14



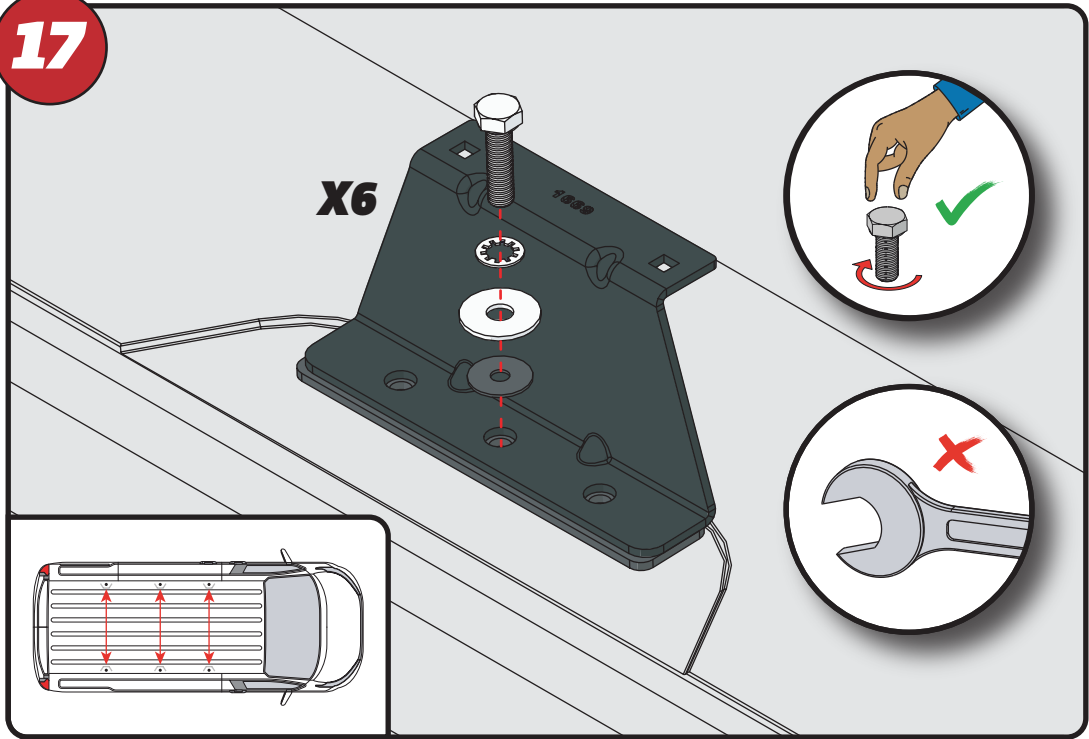
15



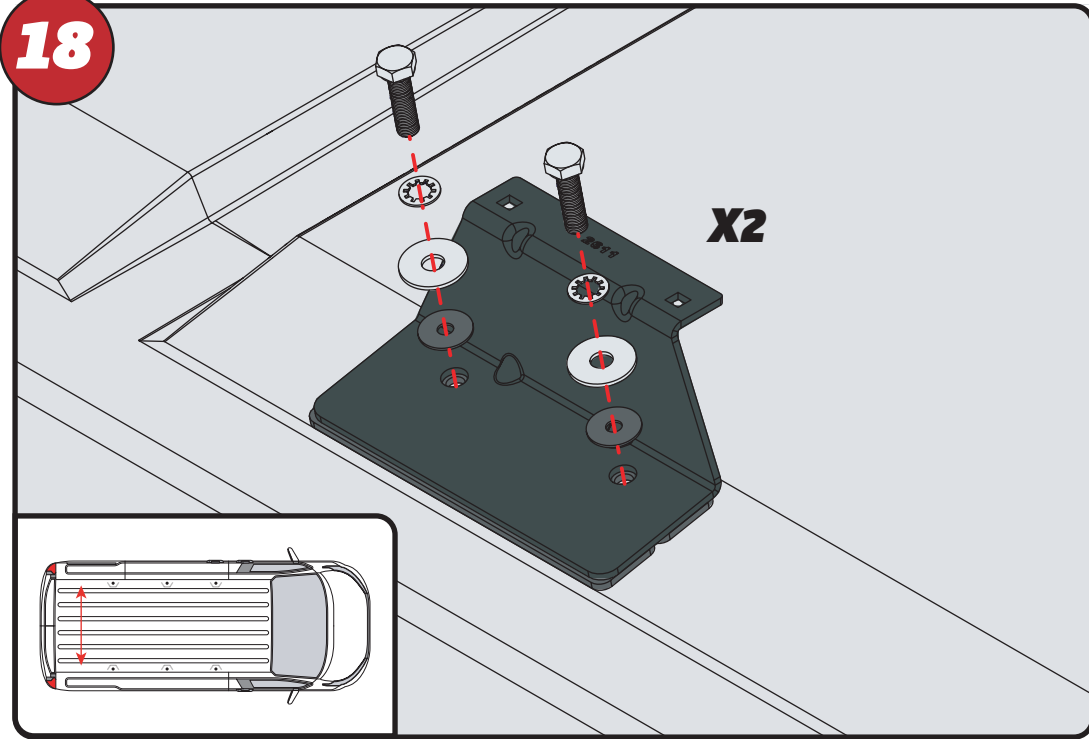
16

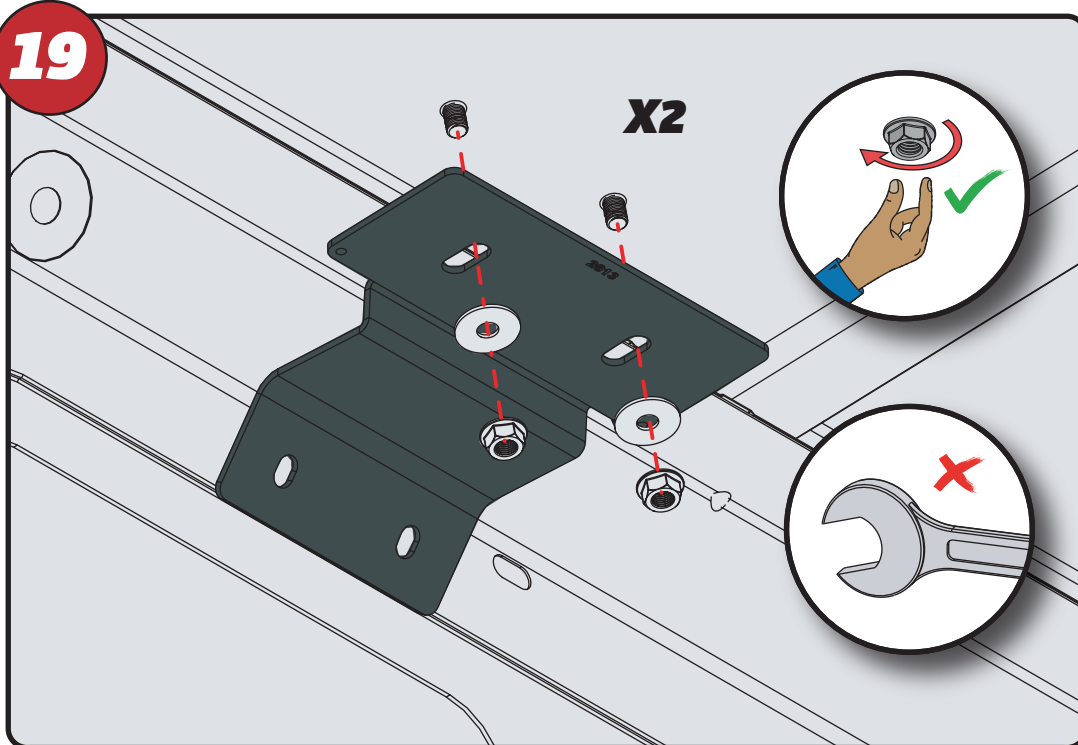
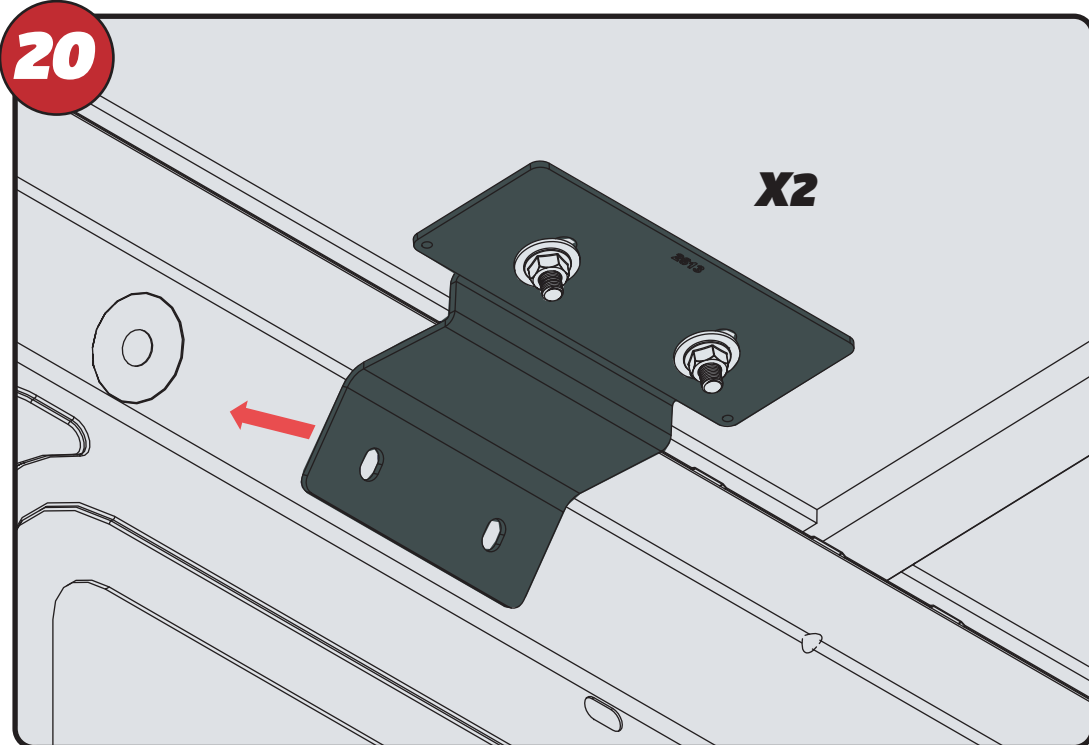
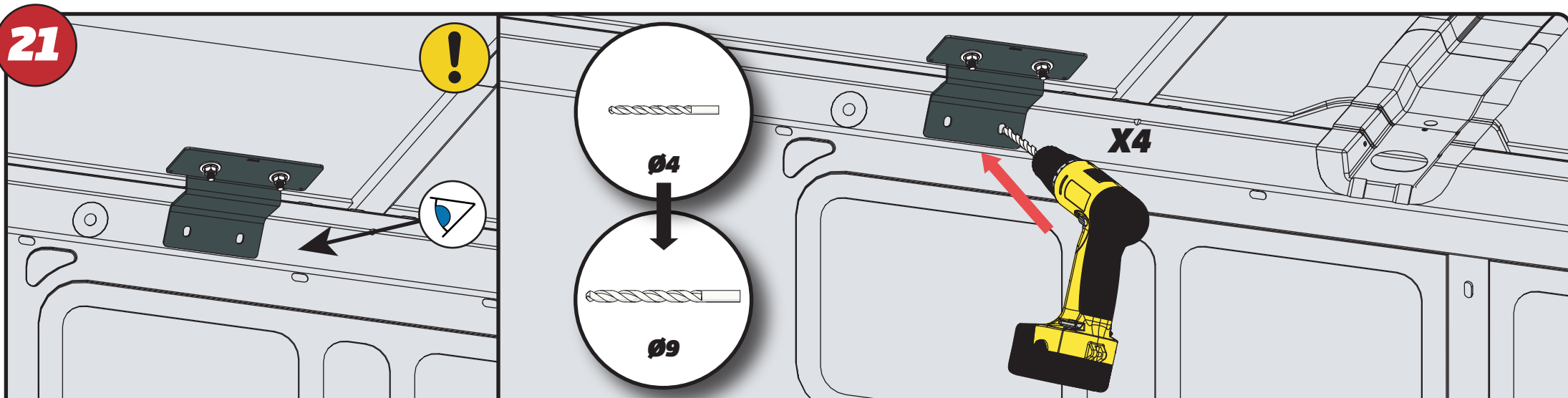


17



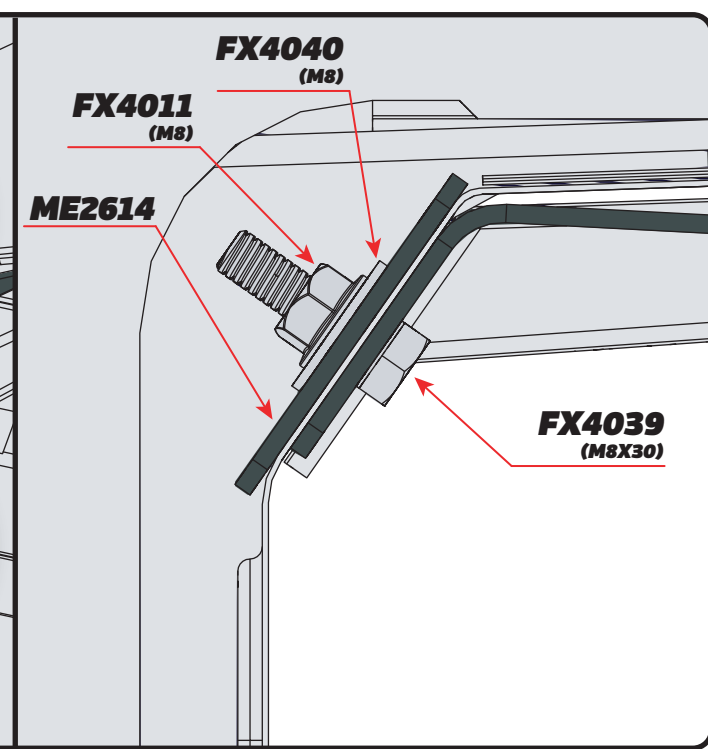
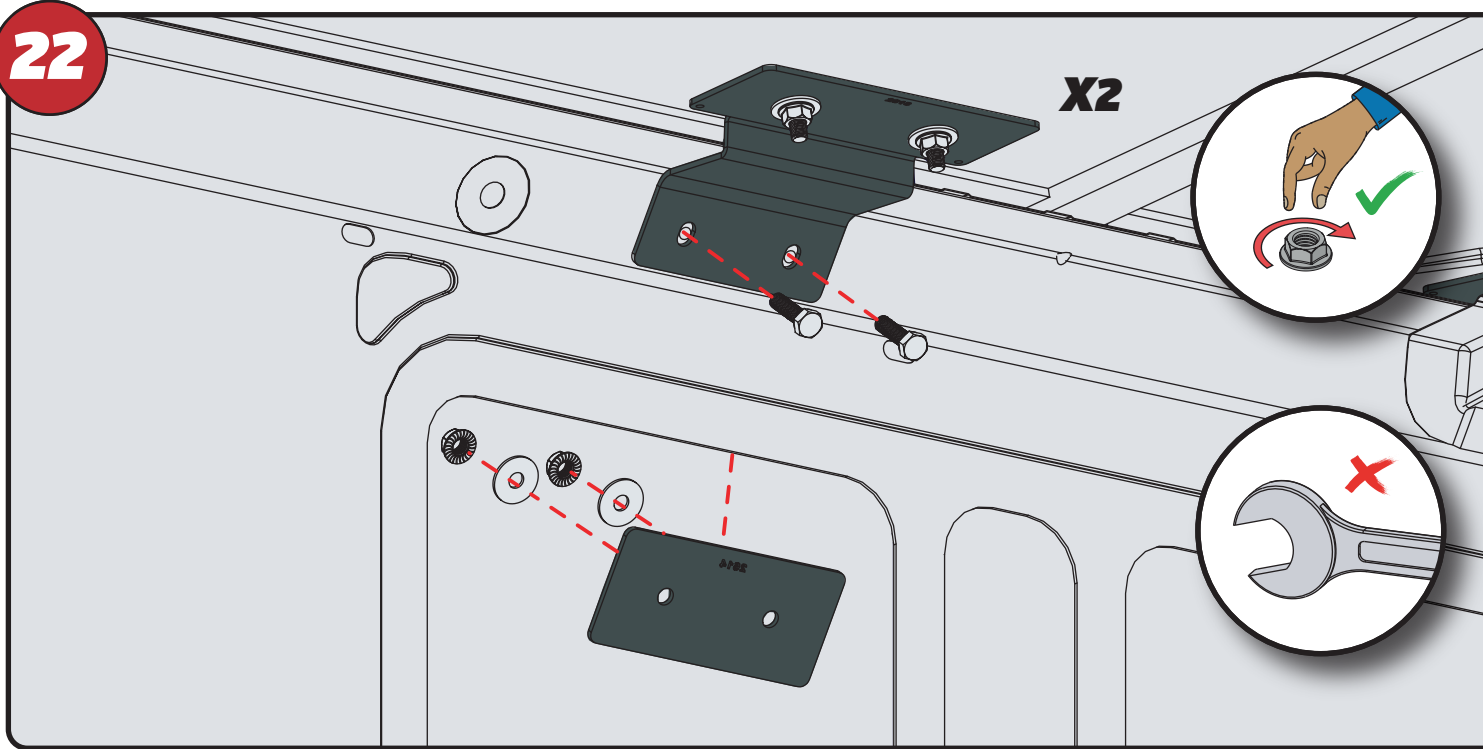
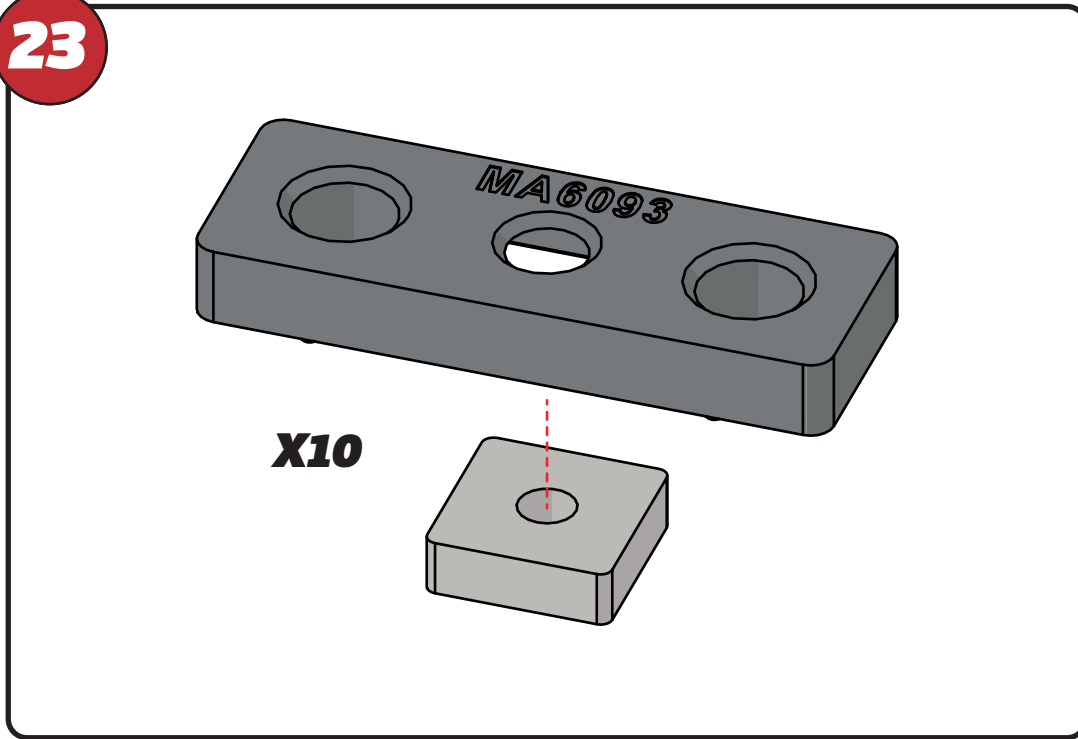
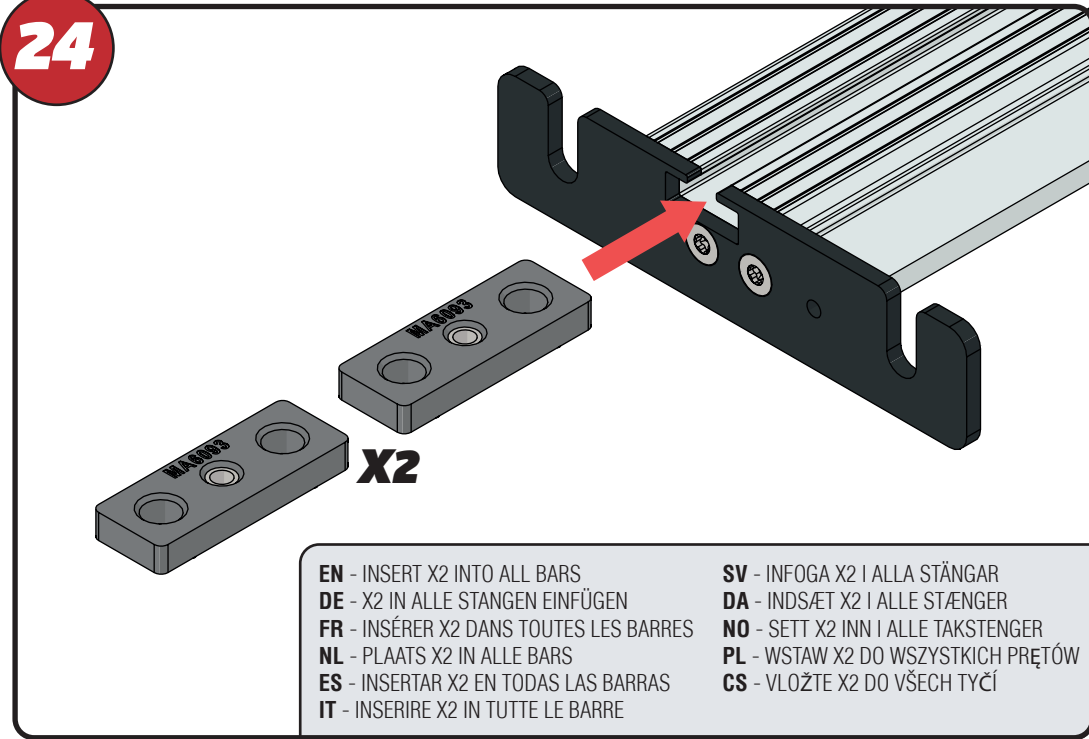
18



19**20****21**

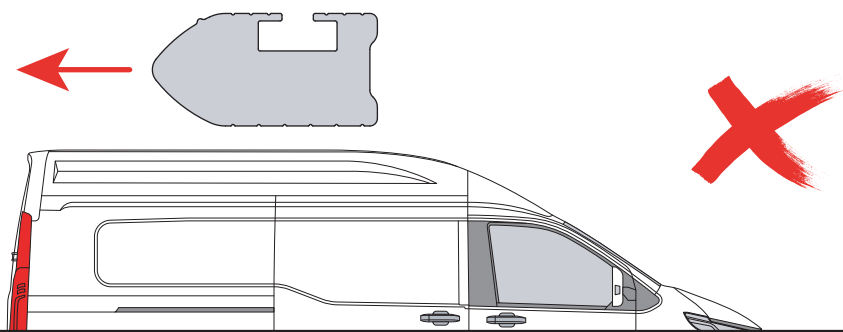
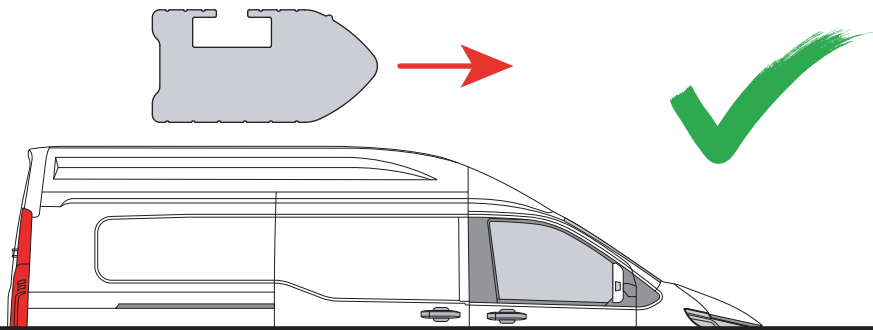
EN - CHECK BEHIND THE SURFACE AND USE CAUTION WHEN DRILLING
 DE - PRÜFEN SIE HINTER DER OBERFLÄCHE UND SEIEN SIE BEIM BOHREN VORSICHTIG
 FR - VÉRIFIEZ DERRIÈRE LA SURFACE ET FAITES PREUVE DE PRUDENCE LORS DU PERÇAGE
 NL - CONTROLEER ACHTER HET OPPERVLAKE EN WEES VOORZICHTIG BIJ HET BOREN
 ES - REVISÁ DETRÁS DE LA SUPERFICIE Y TEN CUIDADO AL TALADRAR
 IT - CONTROLLA DIETRO LA SUPERFICIE E USA CAUTELA DURANTE LA FORATURA

SV - KONTROLLERA BAKOM YTAN OCH VAR FÖRSIKTIG NÄR DU BORRAR
 DA - TJEK BAG OVERFLADEN OG VÆR FORSICHTIG, NÄR DU BORER
 NO - SJEKK BAK OVERFLATEN OG VÆR FORSICHTIG NÄR DU BORER
 PL - SPRAWDŹ, CO JEST ZA POWIERZCHNIĄ I ZACHOWAJ OSTROŻNOŚĆ PODCZAS WIERCENIA
 CS - ZKONTROLUJTE, CO JE ZA POVRCHEM, A BUĎTE OPATRNÍ PŘI VRTÁNÍ

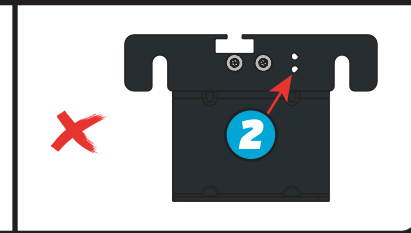
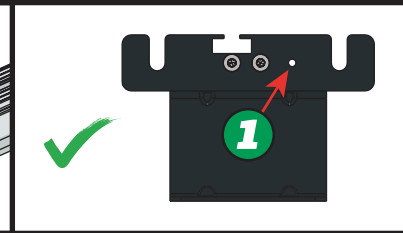
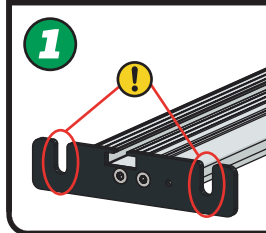
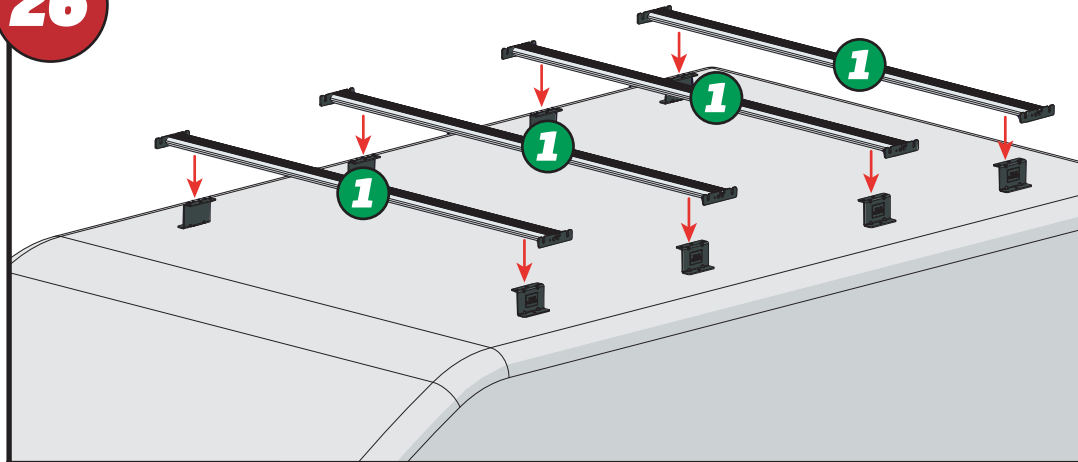
22**23****24**

- | | |
|---|---|
| EN - INSERT X2 INTO ALL BARS | SV - INFOGA X2 I ALLA STÄNGAR |
| DE - X2 IN ALLE STANGEN EINFÜGEN | DA - INDSÆT X2 I ALLE STÆNGER |
| FR - INSÉRER X2 DANS TOUTES LES BARRES | NO - SETT X2 INN I ALLE TAKSTENGER |
| NL - PLAATS X2 IN ALLE BARS | PL - WSTAW X2 DO WSZYSTKICH PRĘTÓW |
| ES - INSERTAR X2 EN TODAS LAS BARRAS | CS - VLOŽTE X2 DO VŠECH TYČÍ |
| IT - INSERIRE X2 IN TUTTE LE BARRE | |

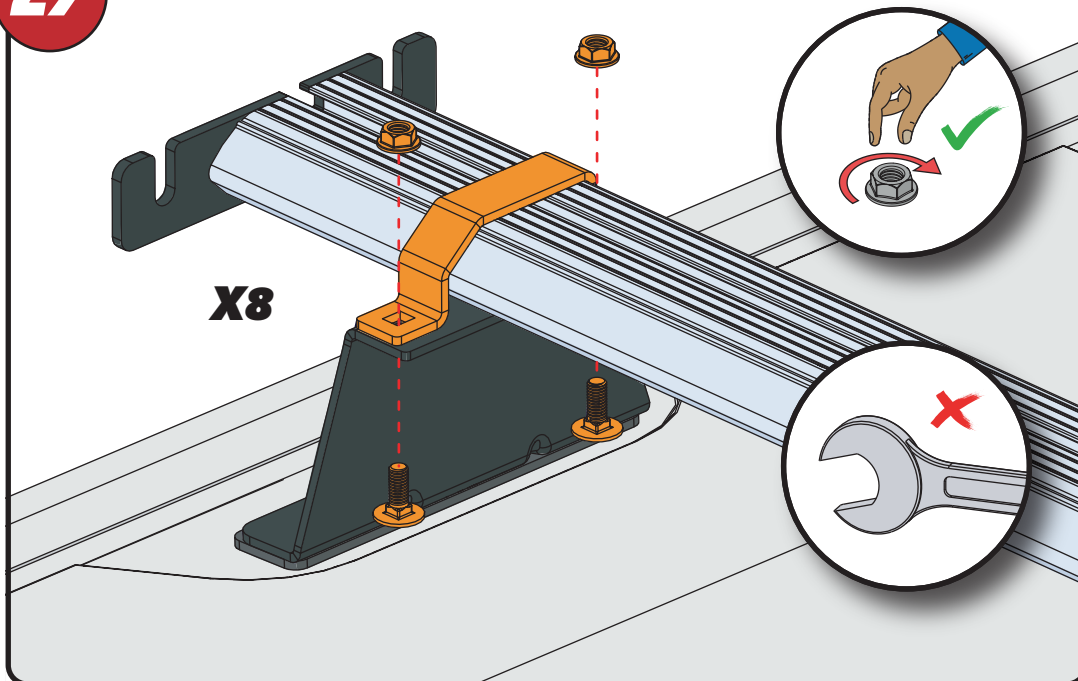
25



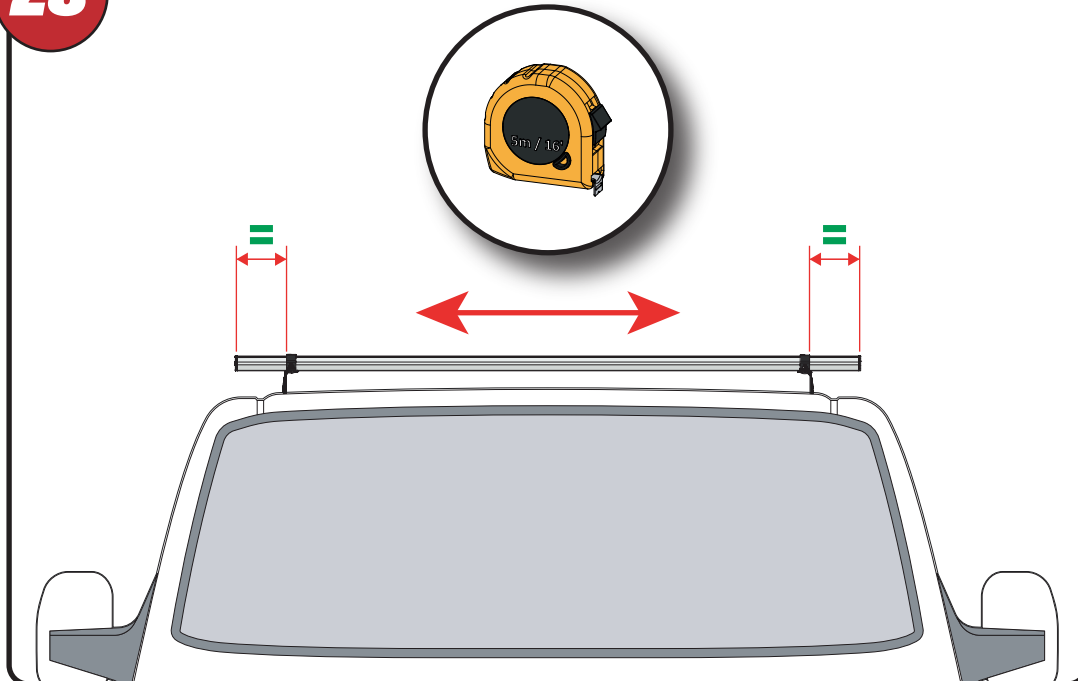
26



27



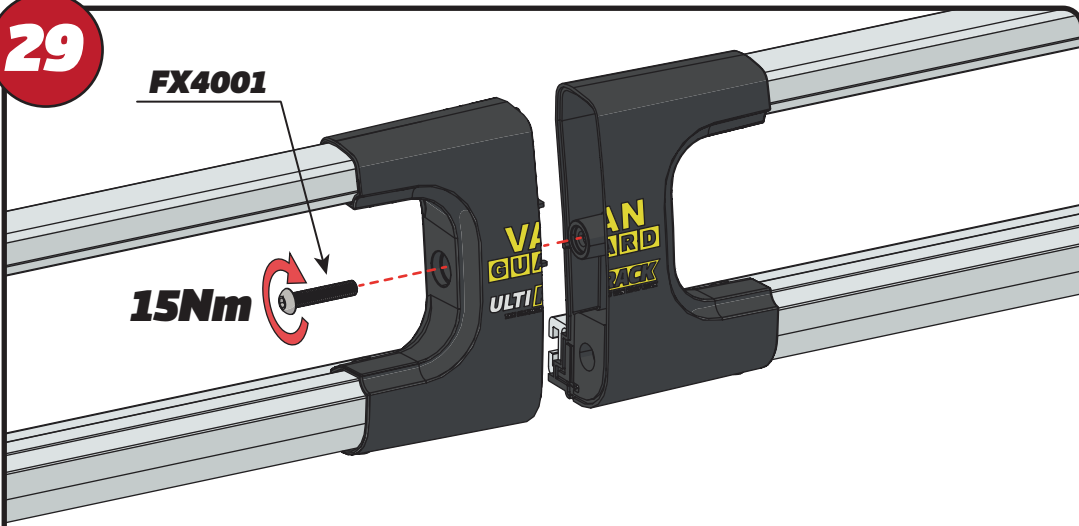
28



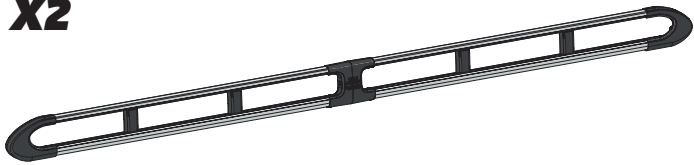
29

FX4001

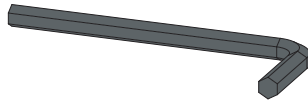
15Nm



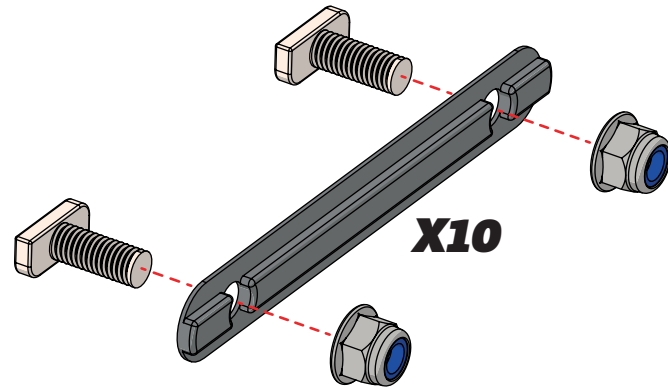
X2



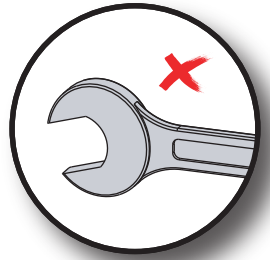
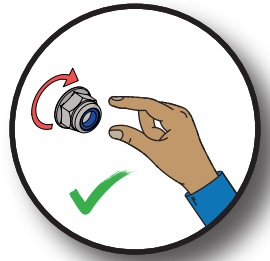
FX4008



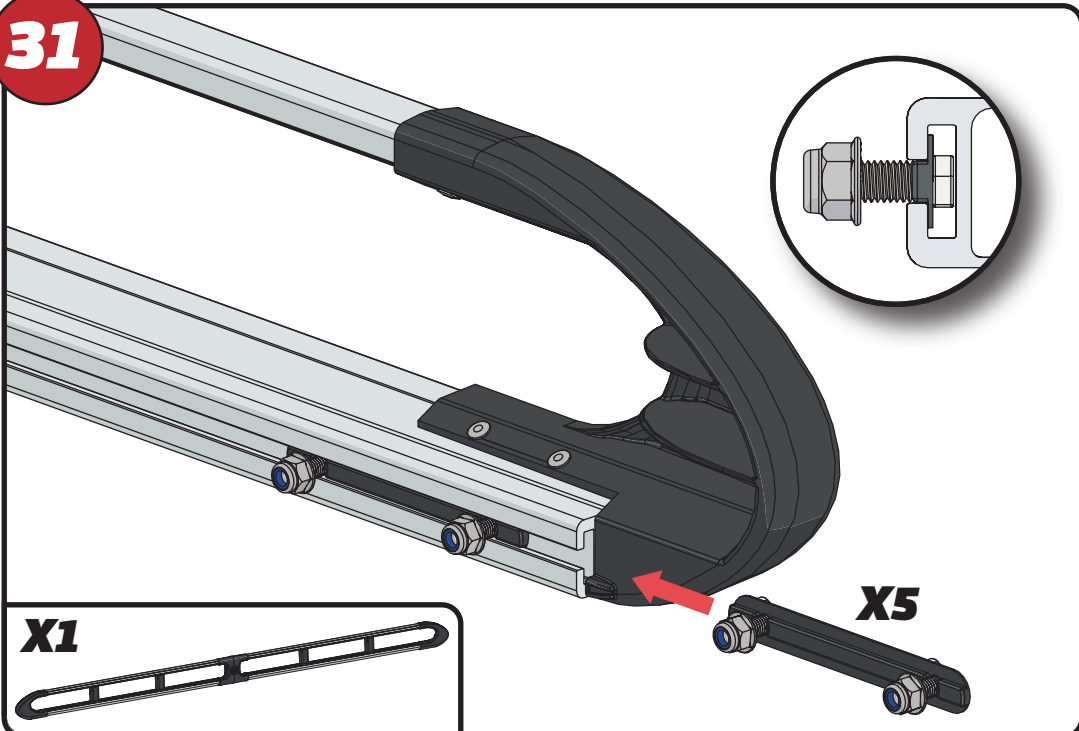
30



X10



31

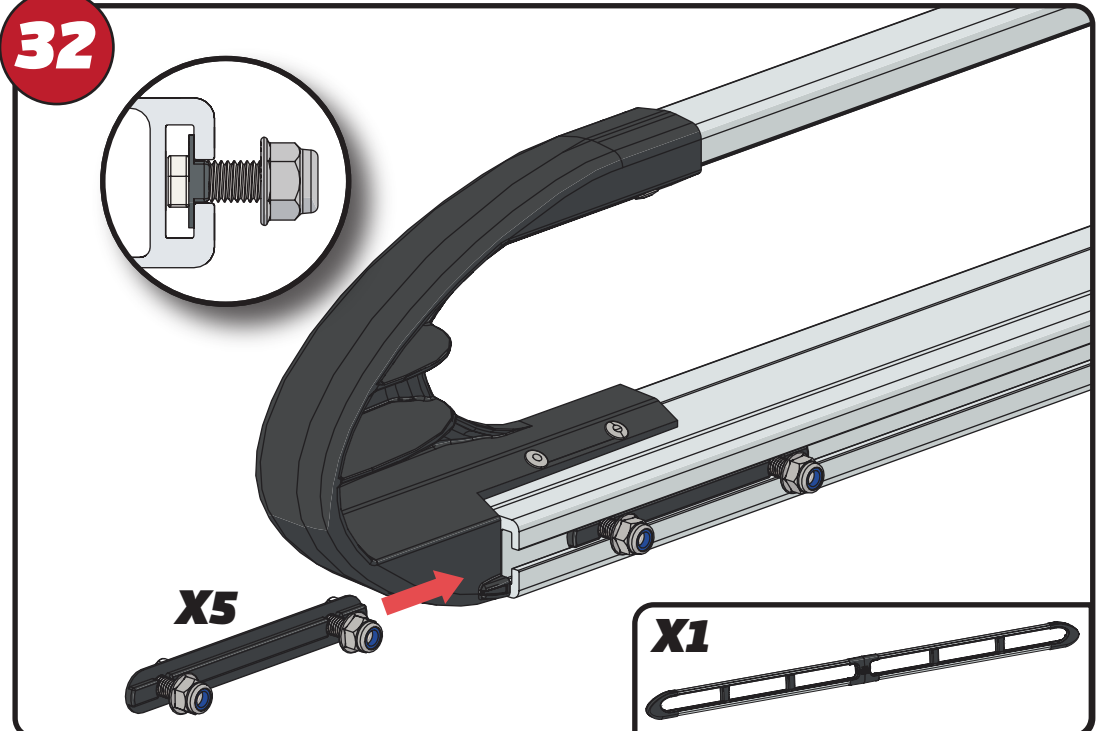


X5

X1



32

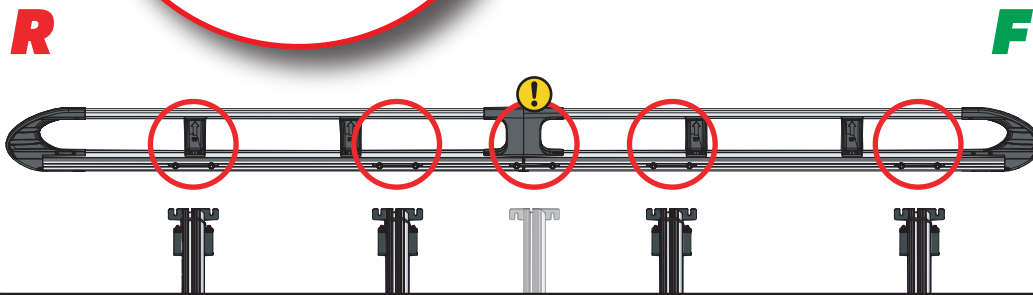
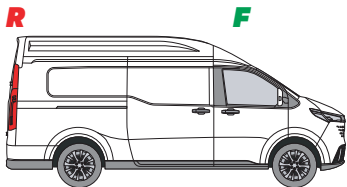
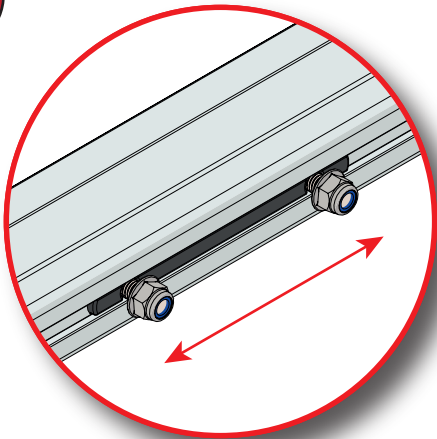


X5

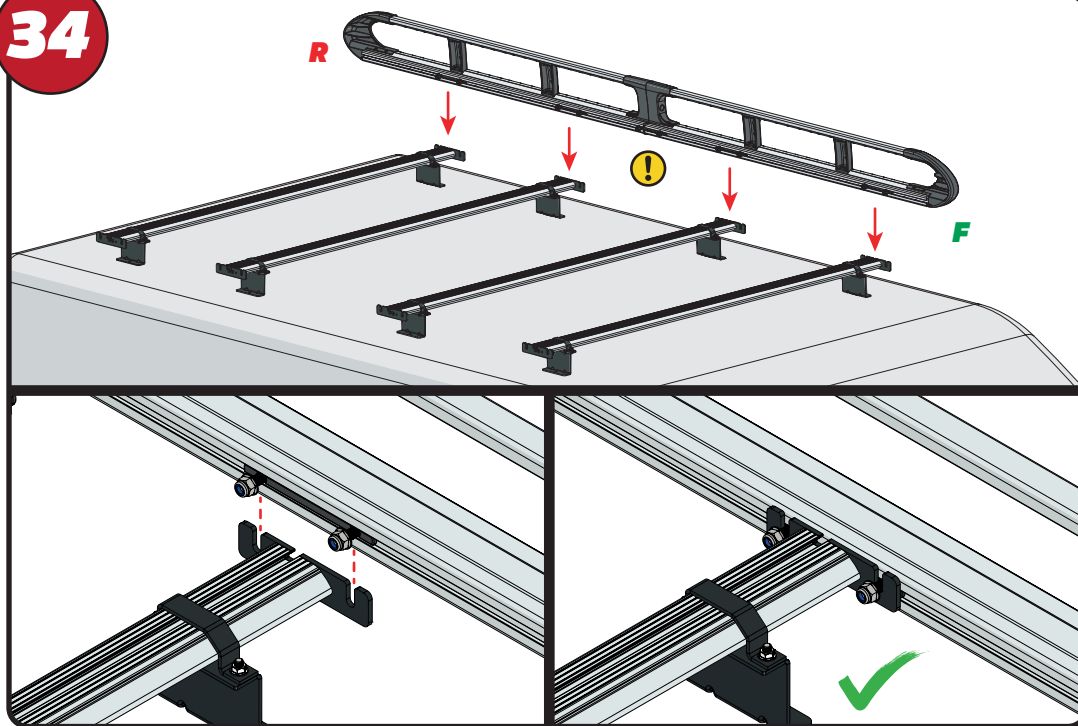
X1



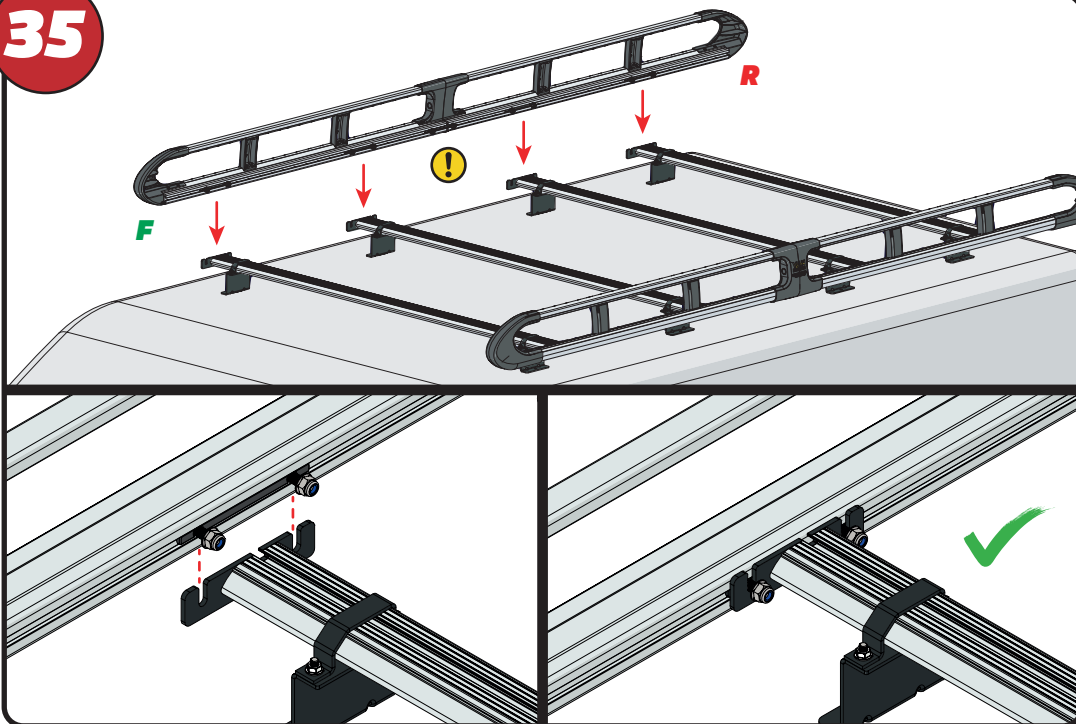
33



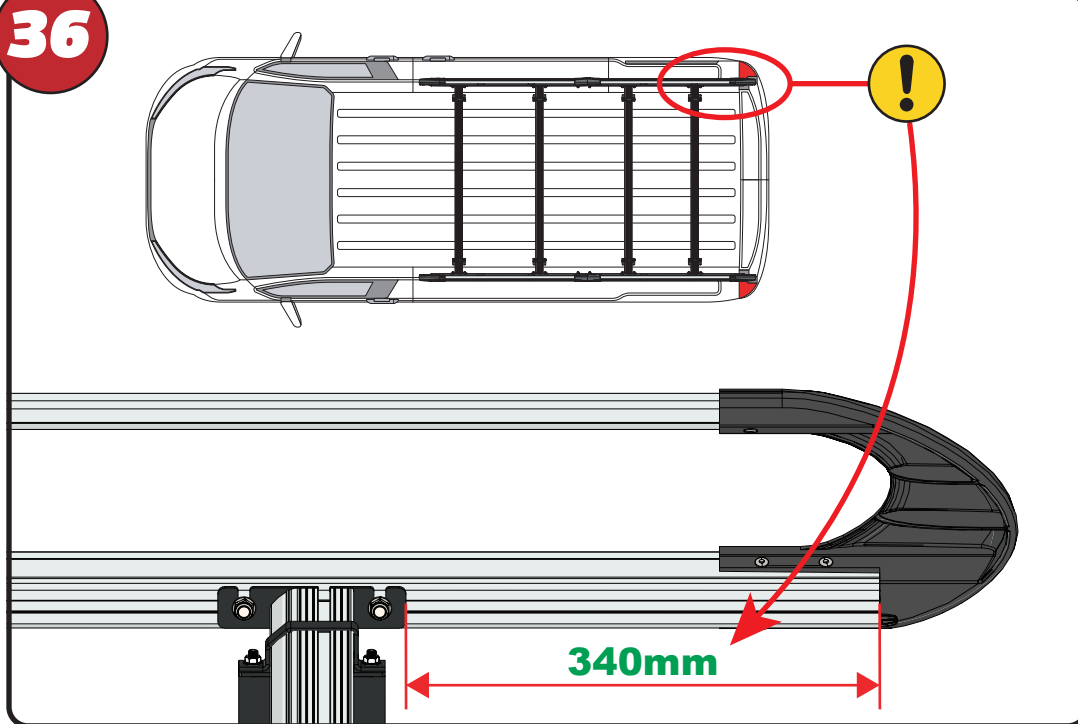
34

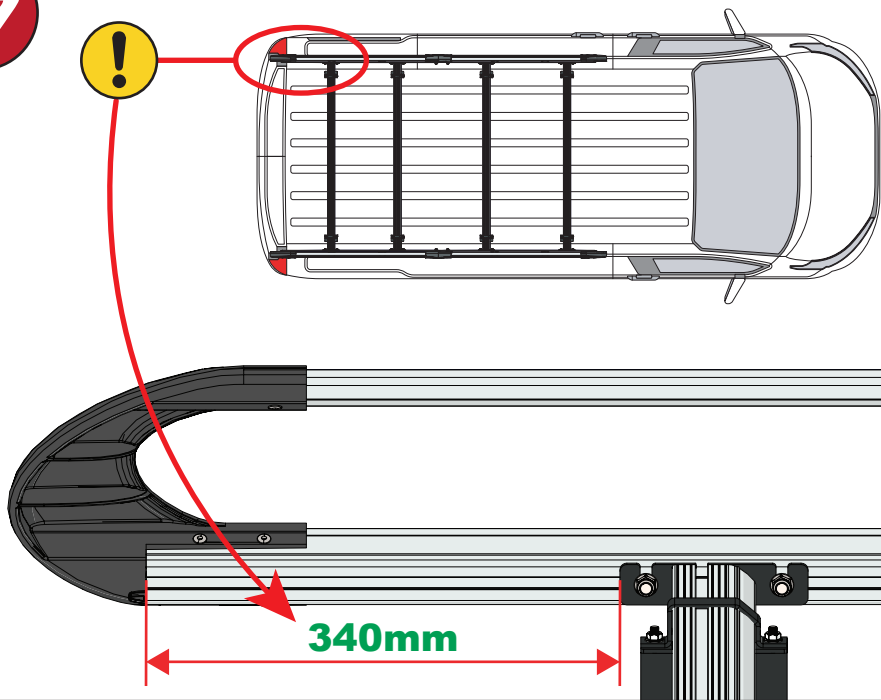
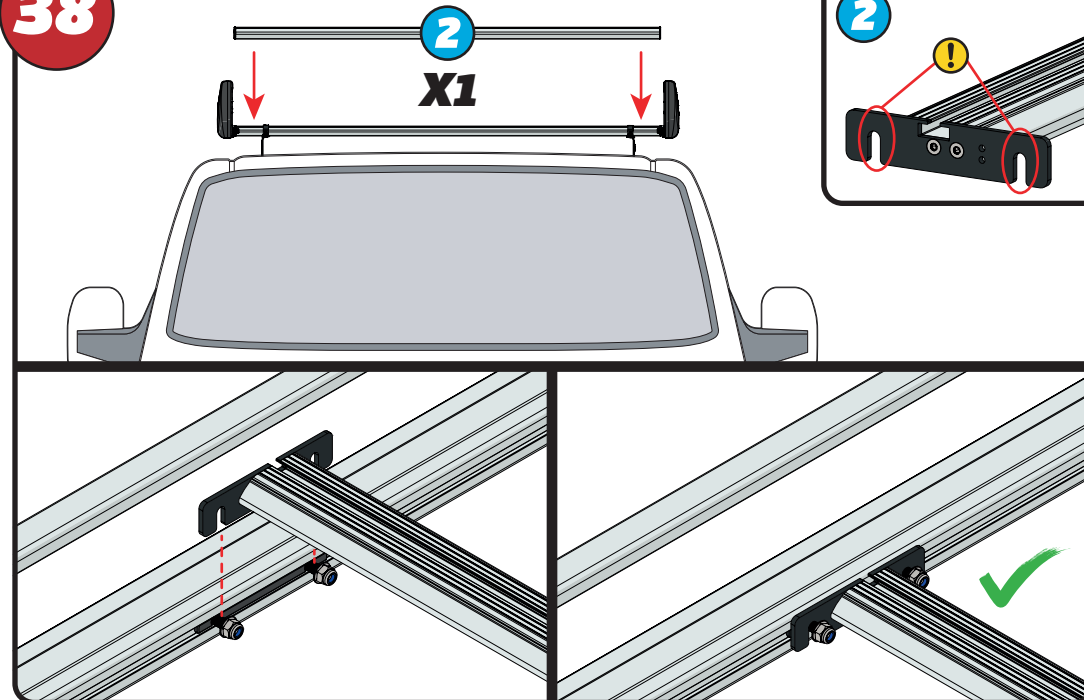
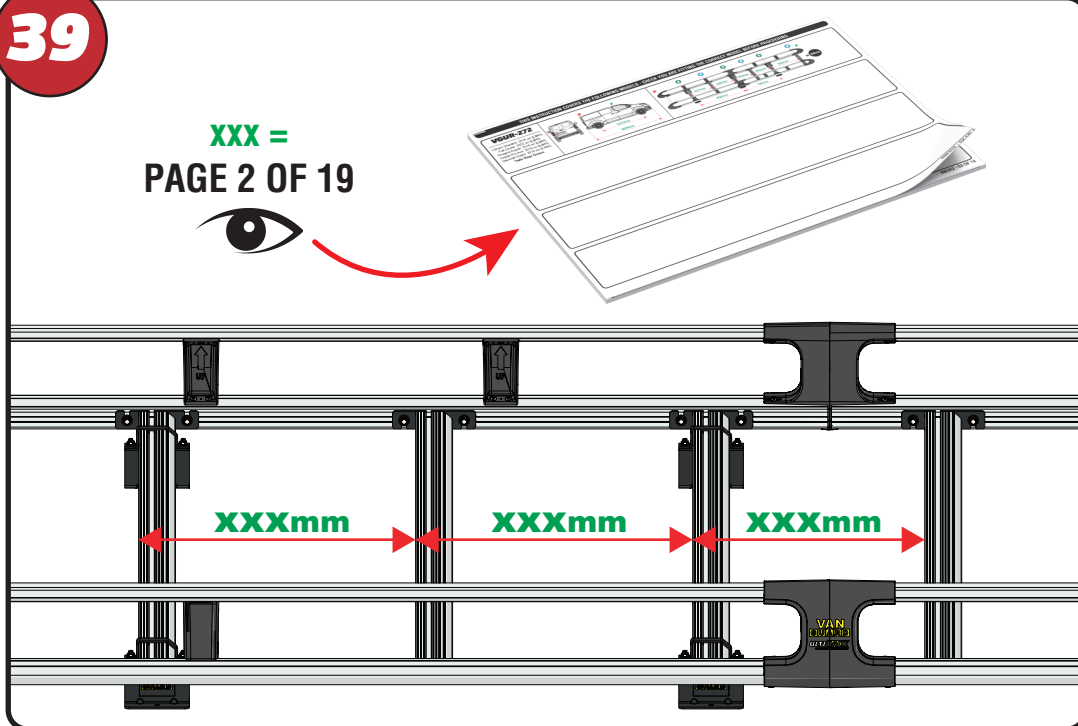
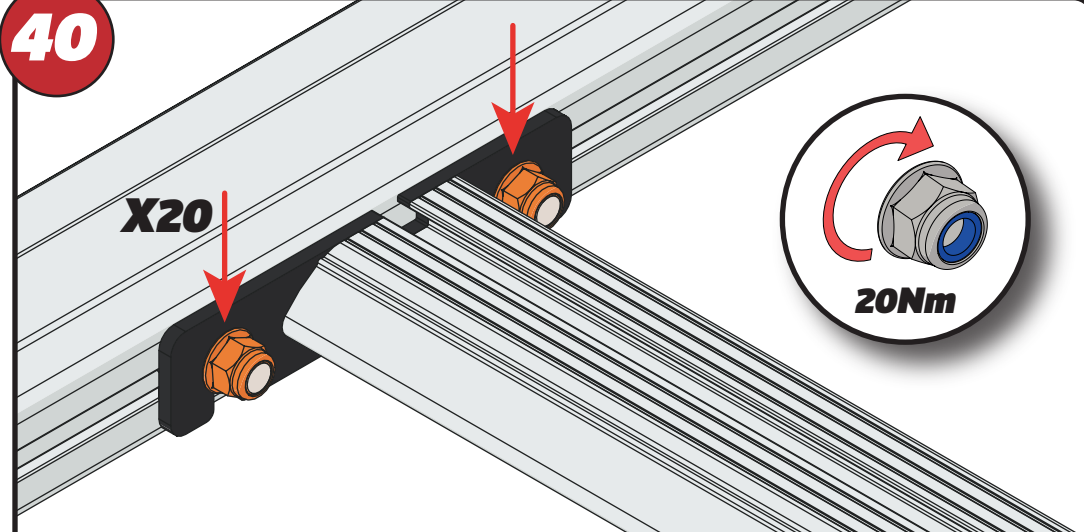


35



36

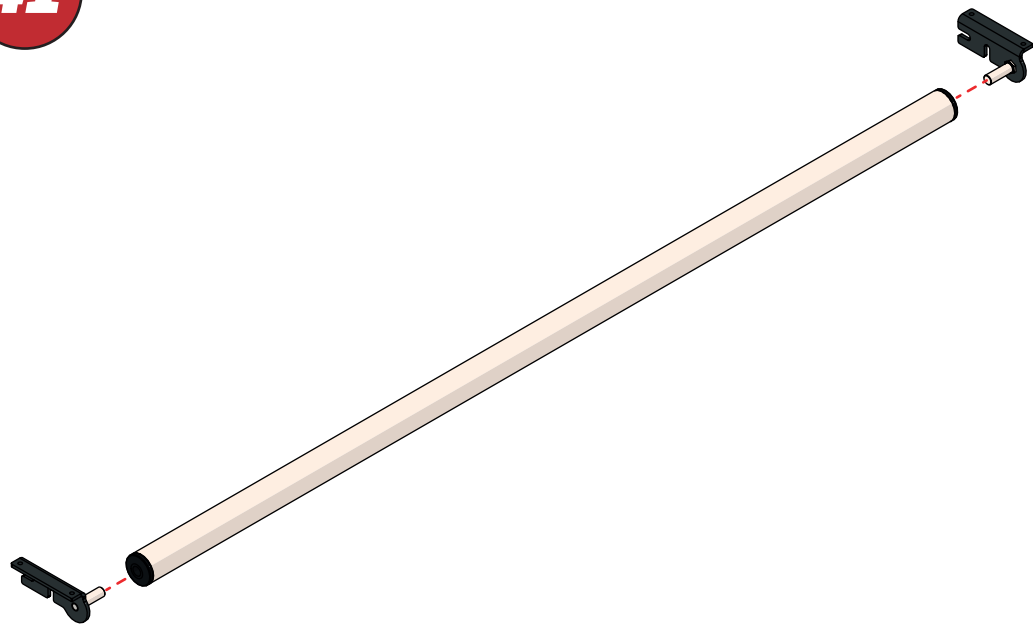


37**38****39****40**

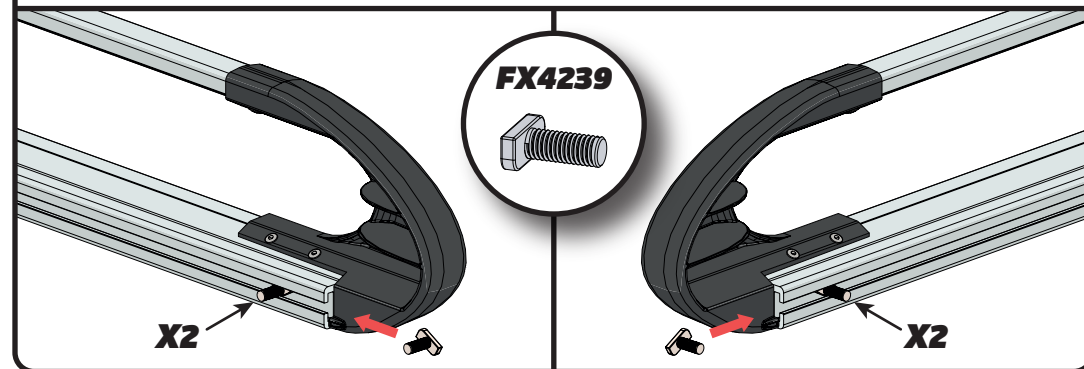
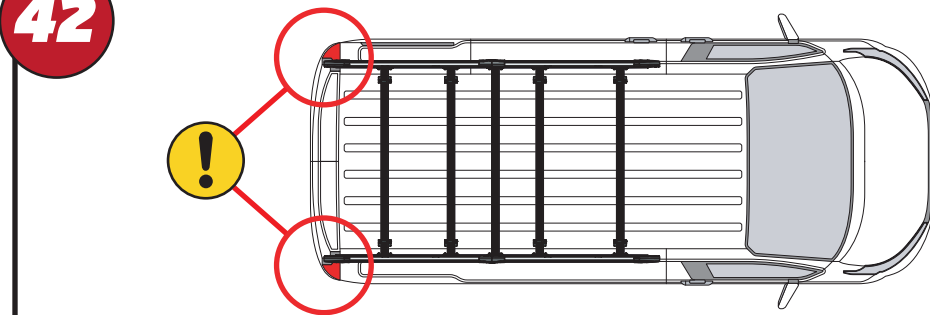
EN - TIGHTEN ALL OF THE CROSS BARS
 DE - ALLE QUERSTANGEN FESTZIEHEN
 FR - SERREZ TOUTES LES BARRES TRANSVERSALES
 NL - DRAAI ALLE DWARSBALK VAN HET DAK AAN
 ES - APRIETE TODAS LAS BARRAS TRANSVERSALES
 IT - STRINGERE TUTTE LE BARRE TRASVERSALI

SV - SKRU UPP ALLA KORSSTANGAR
 DA - SKRU ALLE TAGBØJLER OP
 NO - SKRU OPP ALLE TVERRSTENGER
 PL - DOKRĘCIĆ WSZYSTKIE POPRZECZKI
 CS - VŠECHNY PŘÍČNÉ TYČE SEŠROUJTE

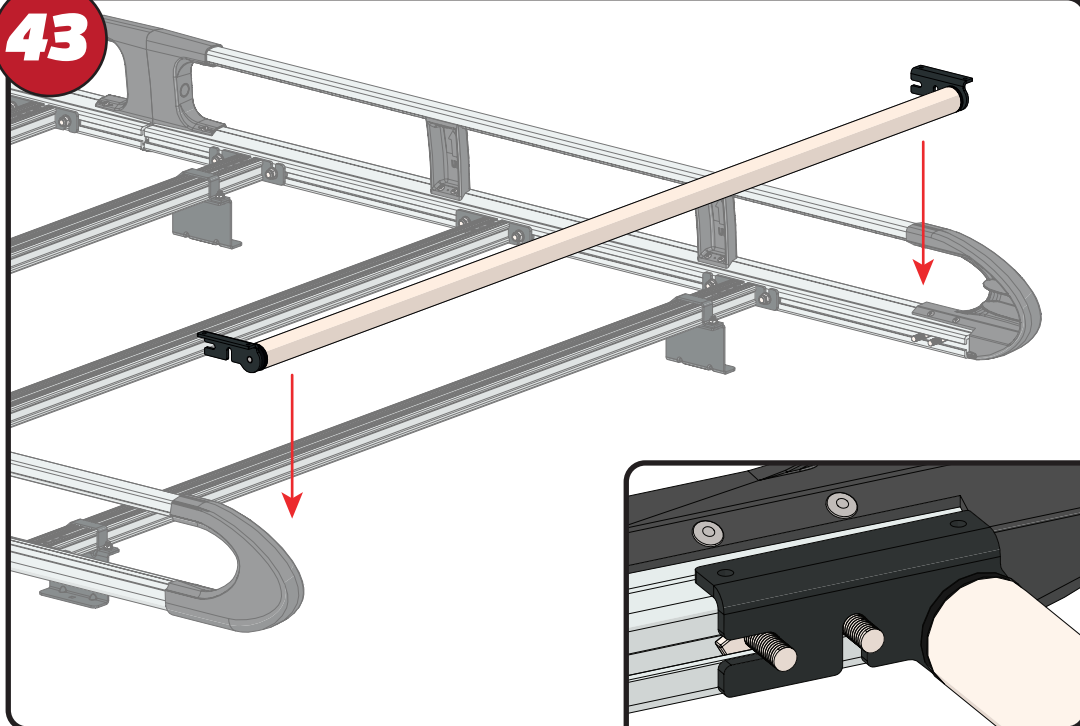
41



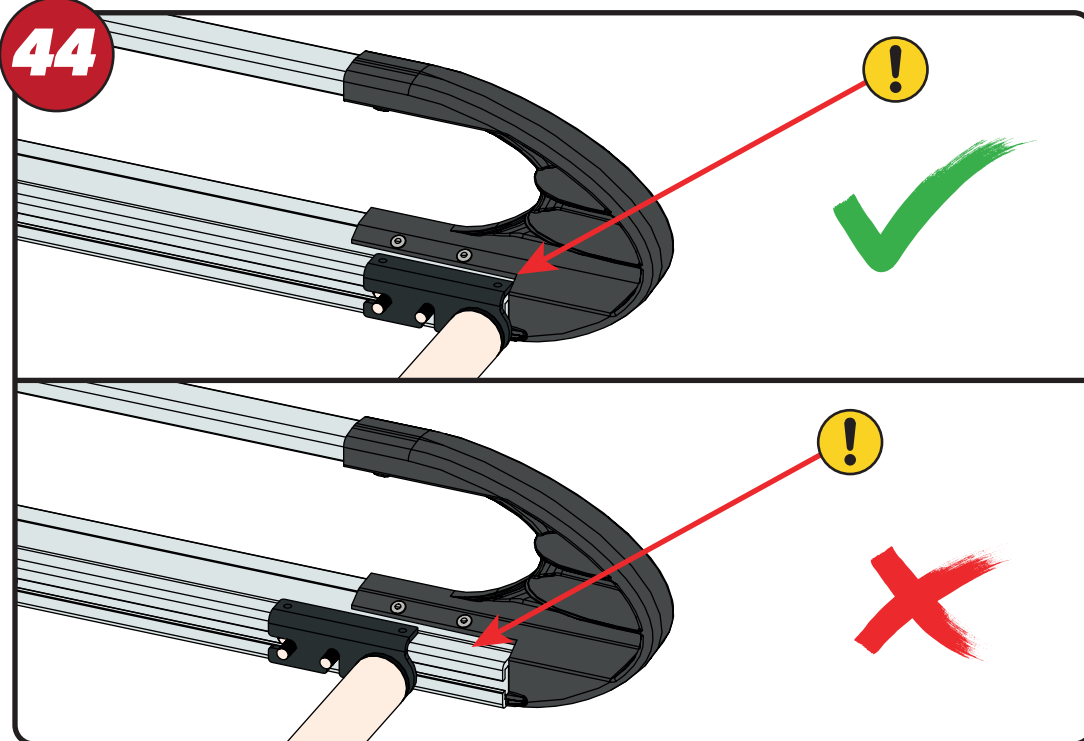
42



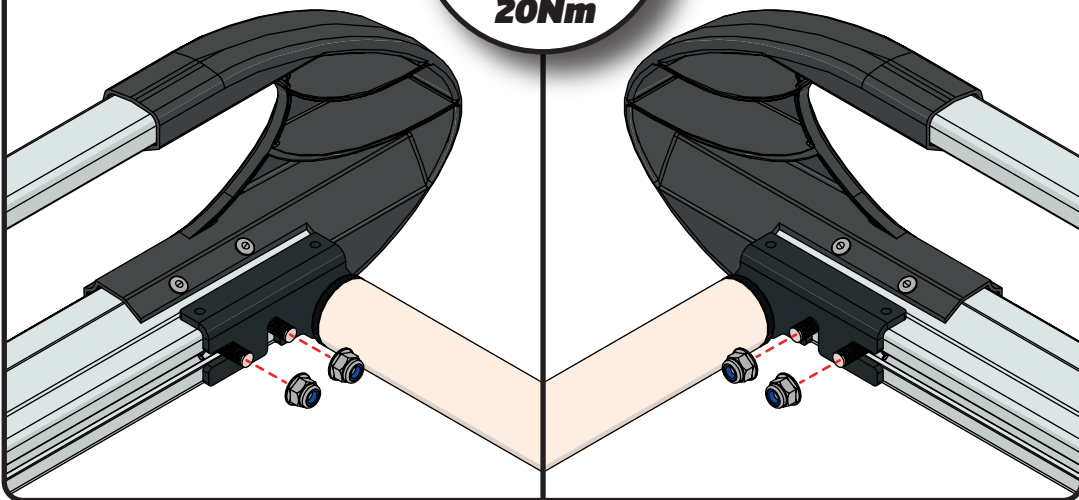
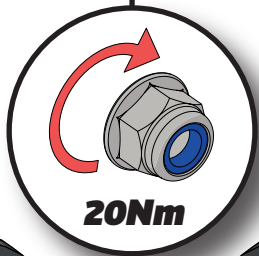
43



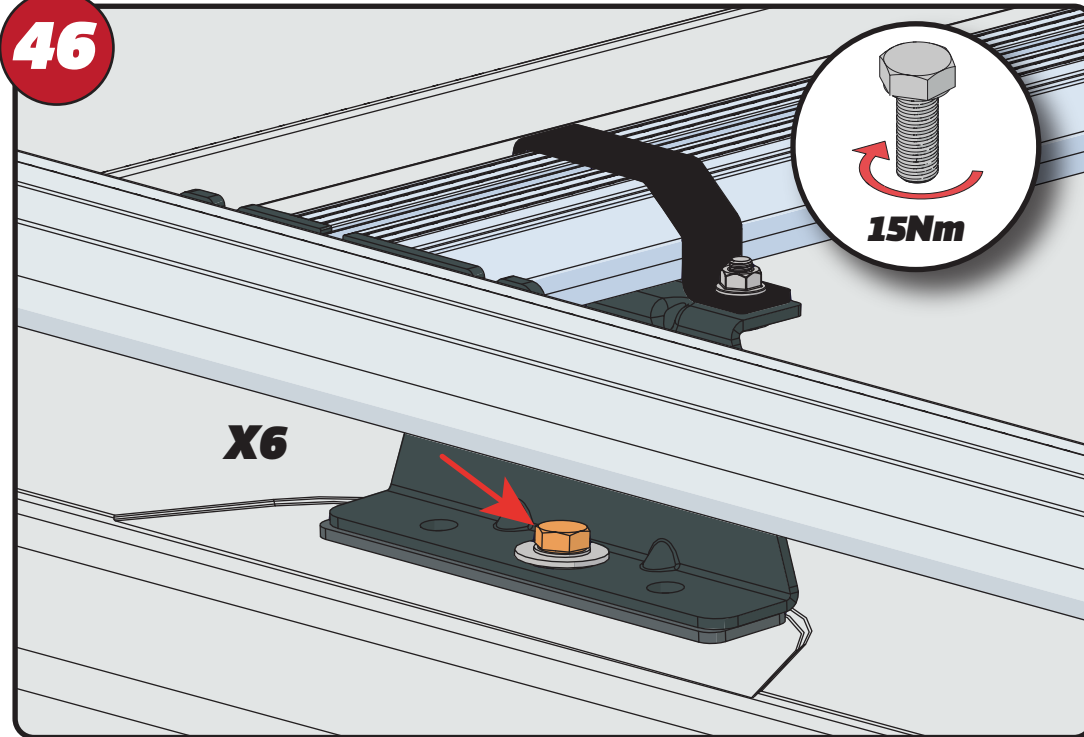
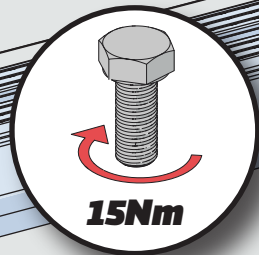
44



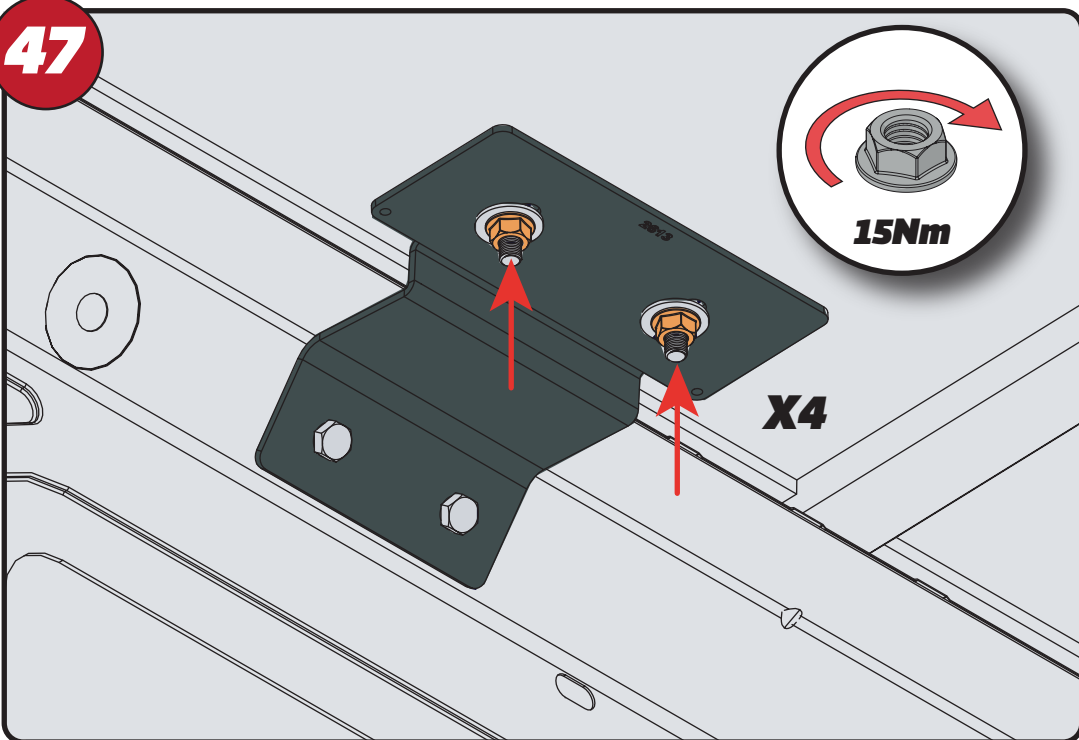
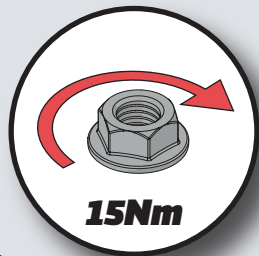
45



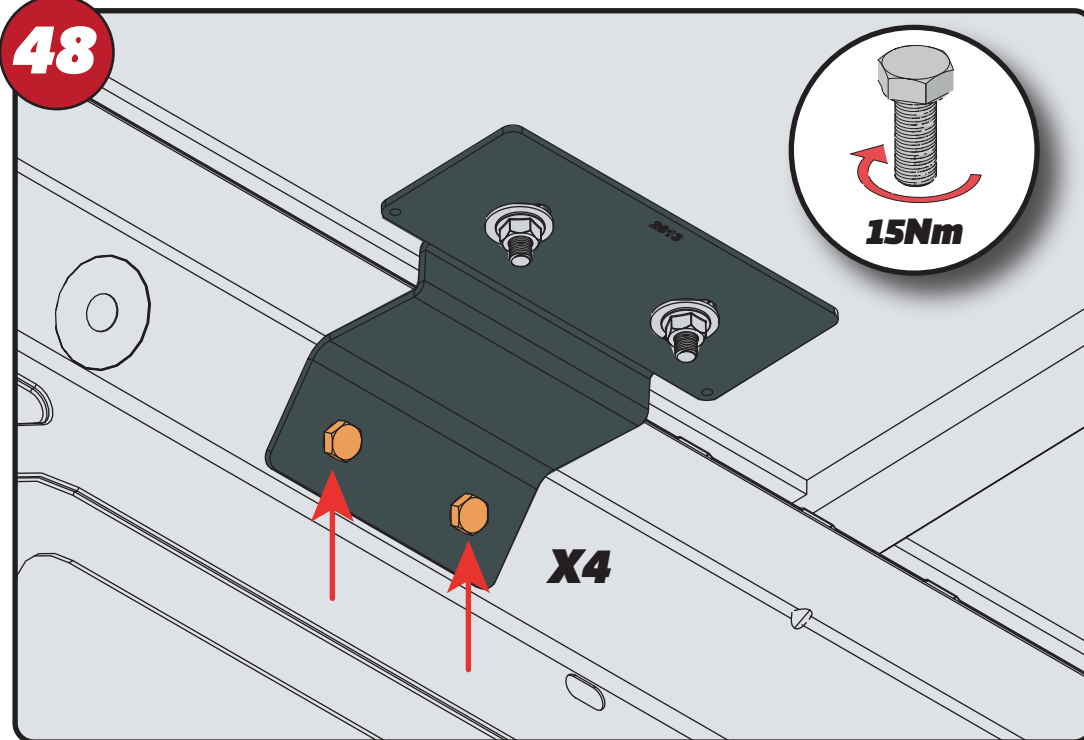
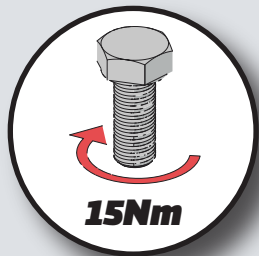
46



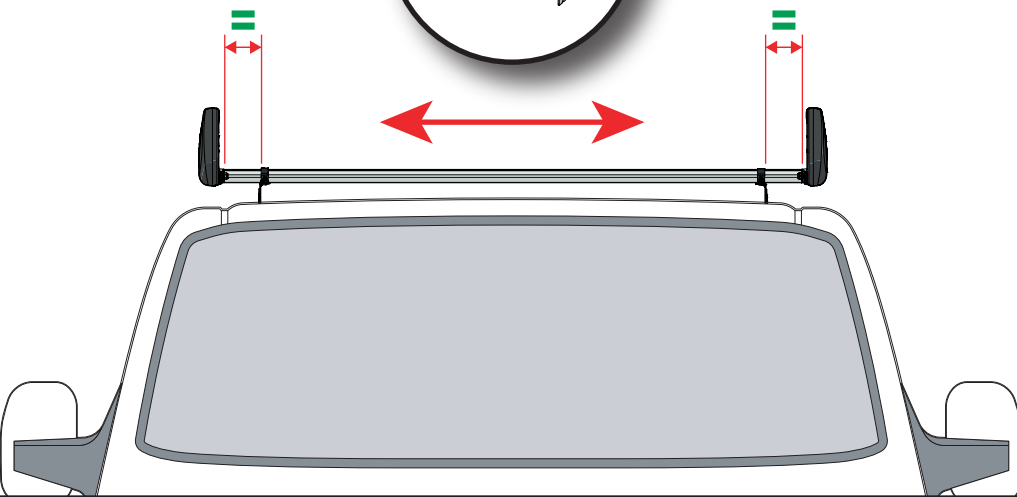
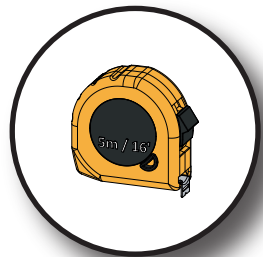
47



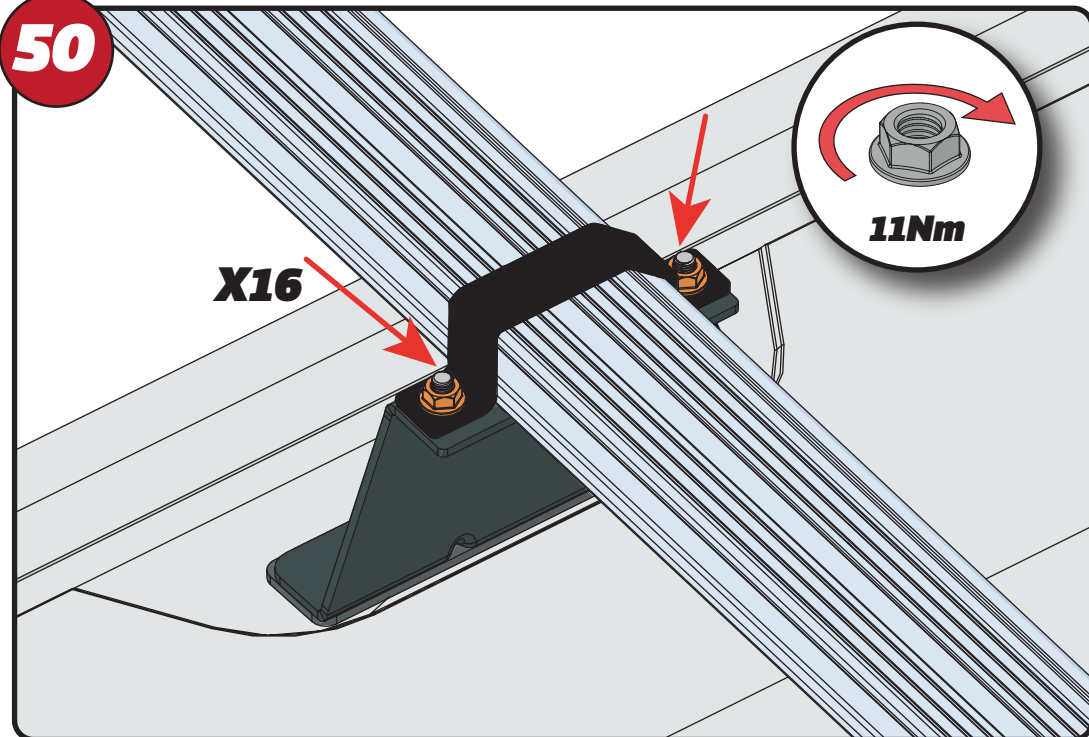
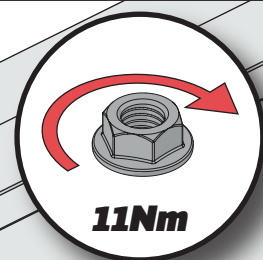
48



49



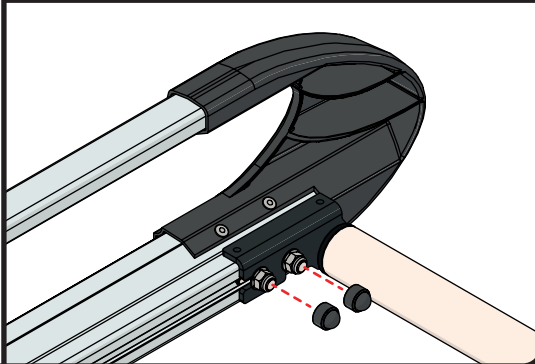
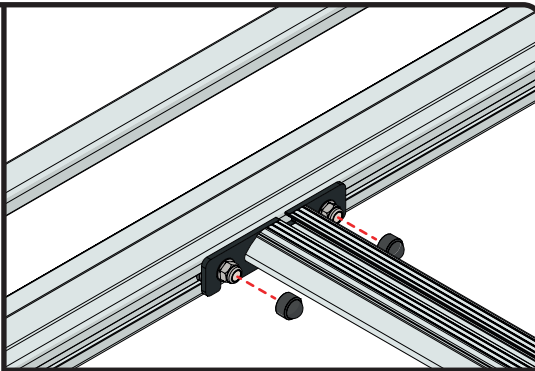
50



51



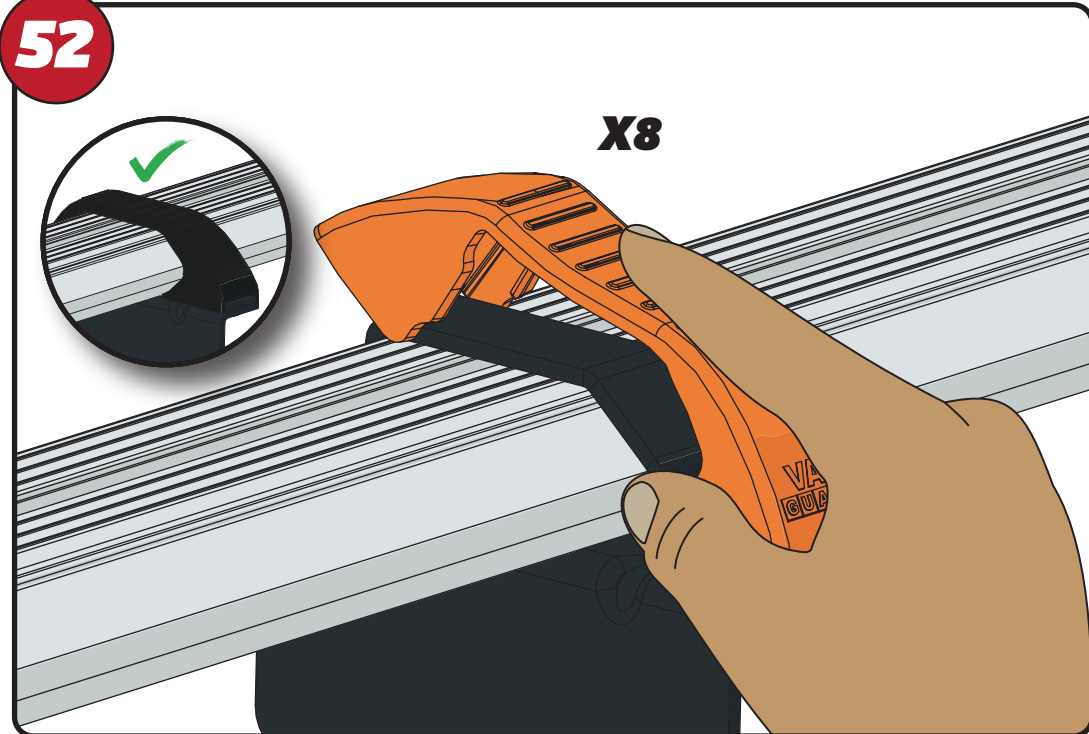
X24



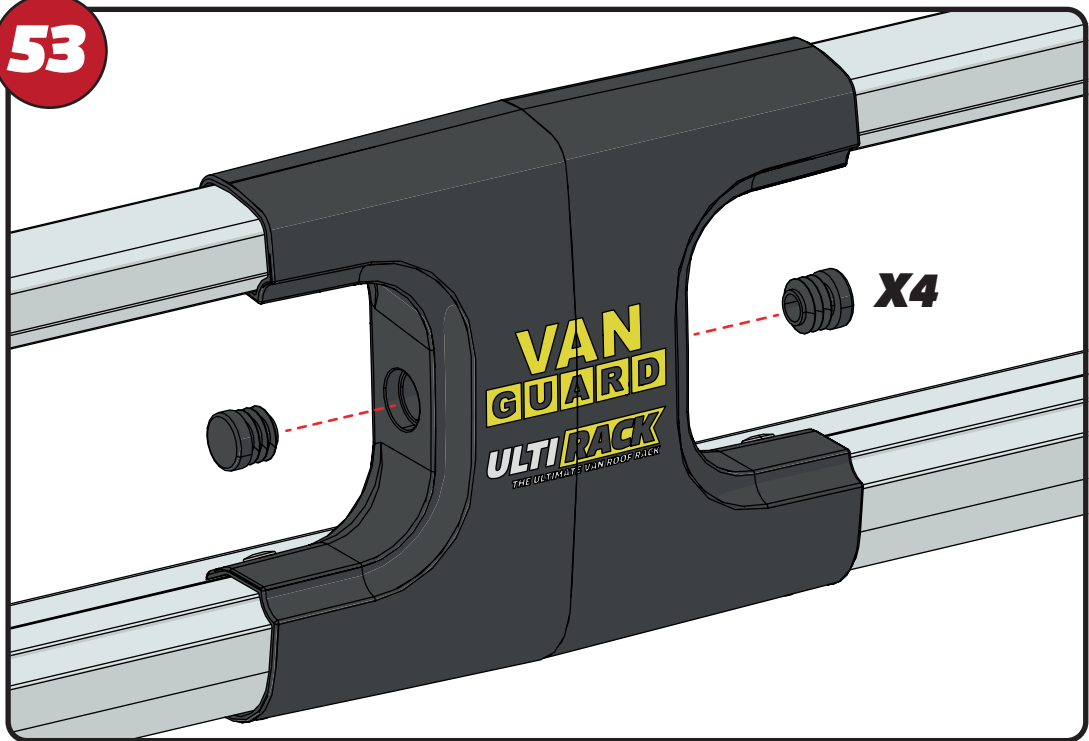
52



X8



53



54

