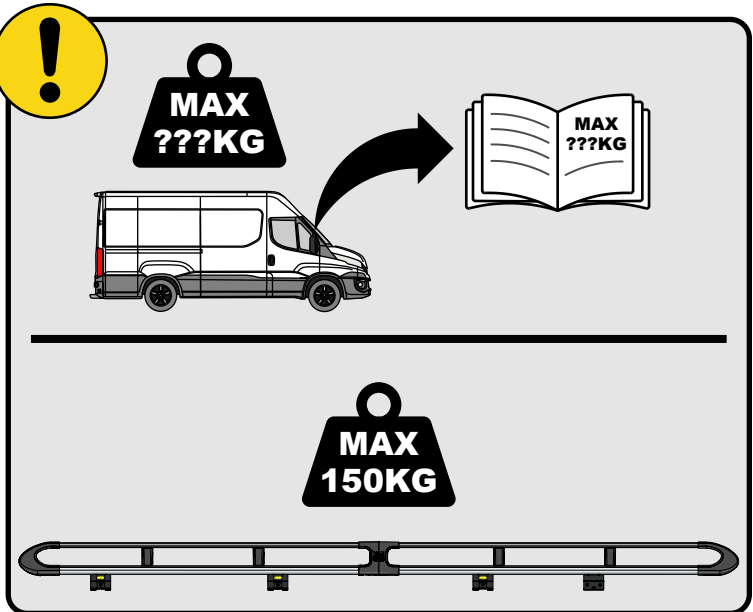
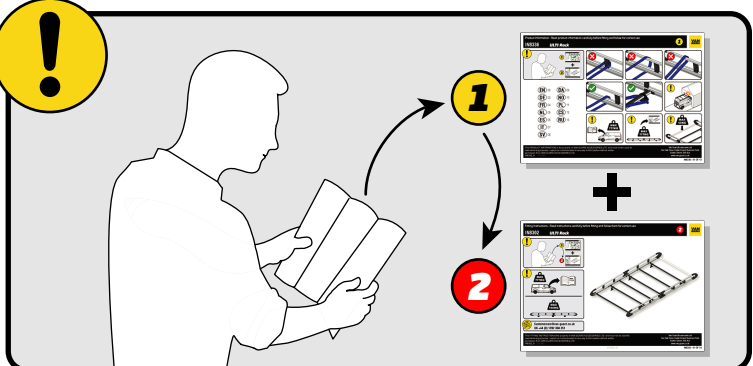


# IN8490

## ULTI Rack+



 [Customercare@van-guard.co.uk](mailto:Customercare@van-guard.co.uk)  
UK +44 (0) 1392 368 351



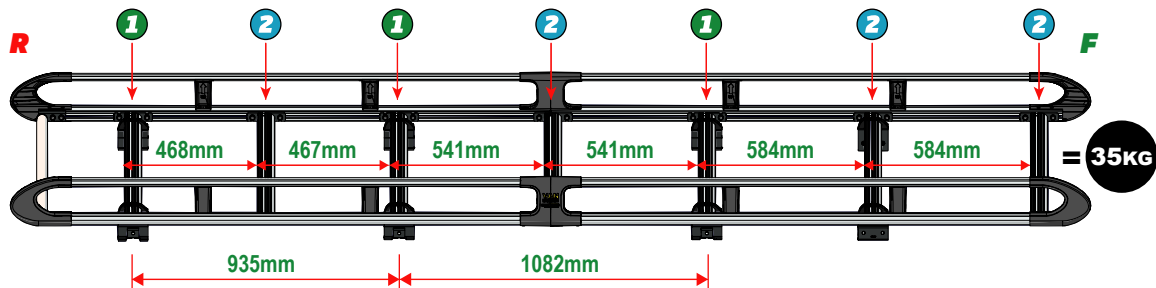
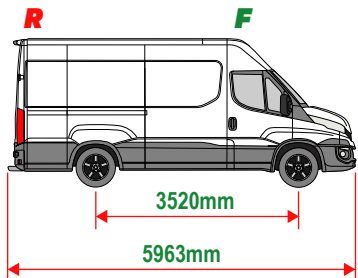
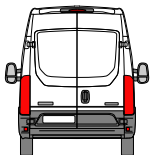
This FITTING INSTRUCTION is the property of VAN GUARD ACCESSORIES LTD. and must not be used for manufacturing purposes, copied nor communicated in any way to third parties without written permission from VAN GUARD ACCESSORIES LTD.  
IN8490\_A (CN:NR)

Van Guard Accessories Ltd  
Fair Oak Close, Exeter Airport Business Park,  
Exeter, Devon, EX5 2UL  
[www.van-guard.co.uk](http://www.van-guard.co.uk)

THIS INSTRUCTION COVERS THE FOLLOWING MODELS - CHECK YOU ARE FITTING THE CORRECT MODEL BEFORE PROCEEDING

# VGUR-313

Iveco Daily: 2014 on  
L3H2  
Twin Rear Doors



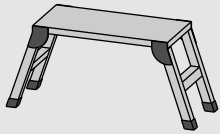
**SUPPLIED COMPONENTS - CHECK ALL PARTS ARE PRESENT AND CORRECT BEFORE PROCEEDING (1 OF 2)**

**TOOLS REQUIRED**

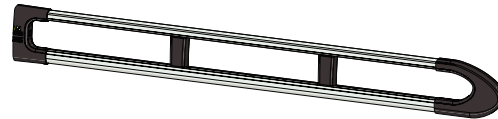
**10MM X2**



**13MM X1**



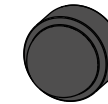
**AS3547 X2**  
(3600 / A)



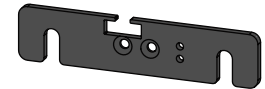
**MA6118 X14**



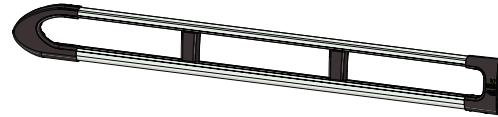
**FX4241 X32**



**ME1622 X4**



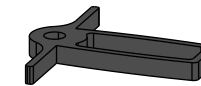
**AS3546 X2**  
(3600 / B)



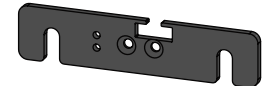
**FX4008 X1**



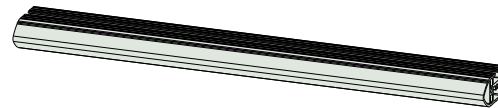
**MA6145 X1**



**ME1623 X4**



**ME1627 X7**  
(1354mm)



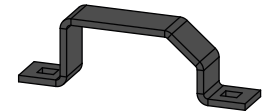
**FX4001 X2**  
(M8X40)



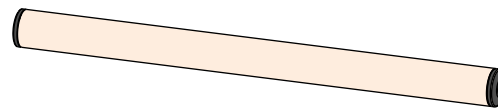
**FX4235 X28**  
(M5X25)



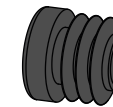
**ME0203 X8**



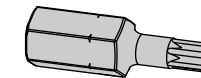
**AS3159 X1**  
(1340mm)



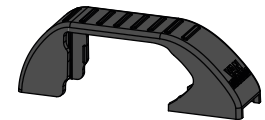
**MA6007 X4**



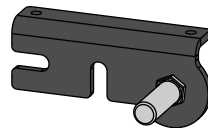
**FX4248 X1**  
(T25)



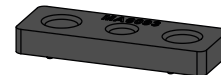
**MA6065 X8**



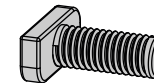
**AS3590 X1**



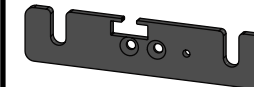
**MA6093 X14**



**FX4239 X32**  
(M8X20)



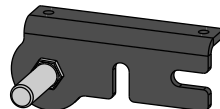
**ME1620 X3**



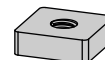
**FX4016 X26**  
(M6)



**AS3591 X1**



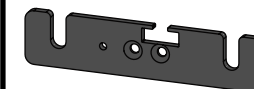
**ME0316 X14**



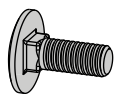
**FX4240 X32**  
(M8)



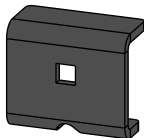
**ME1621 X3**



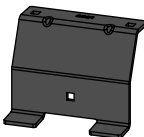
**FX4042 X16**  
(M6X16)



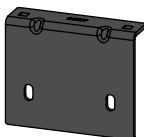
**ME0010 X6**



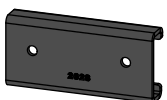
**ME2621 X6**



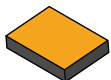
**ME2627 X2**



**ME2628 X2**



**MA6016 X12**

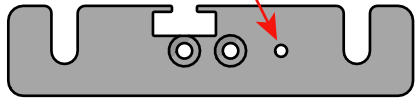


**FX4015 X10**  
(M6X30)



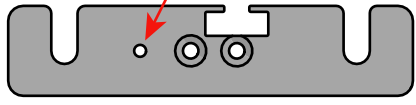
01

1L



X3

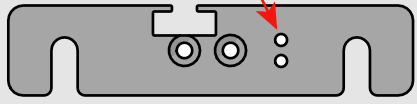
1R



X3

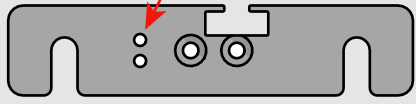


2L



X4

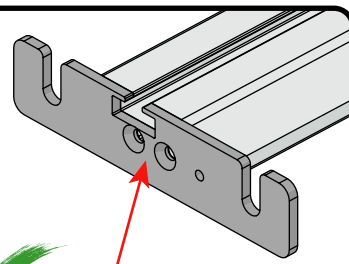
2R



X4

02

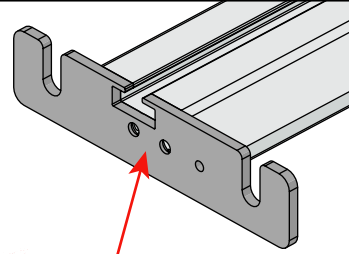
1R



X3

1L

2R



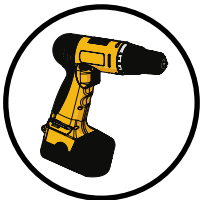
X4

2L

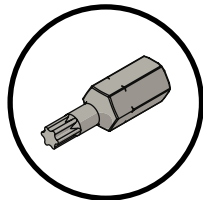
03

01

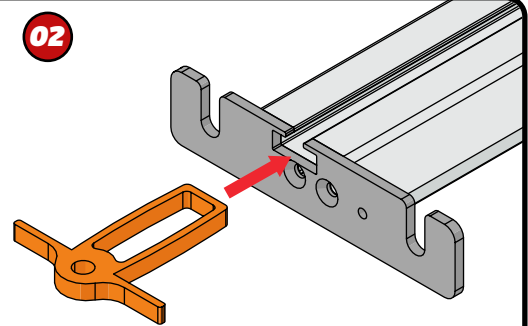
FX4248



+



02



04

1

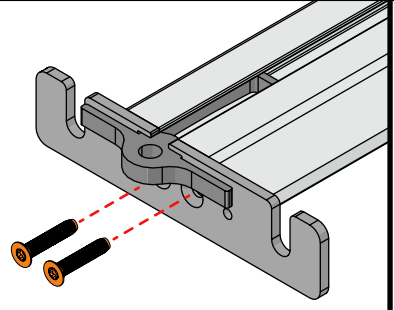
X3



2

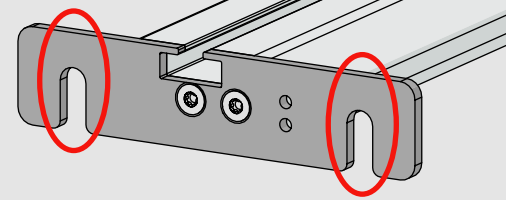
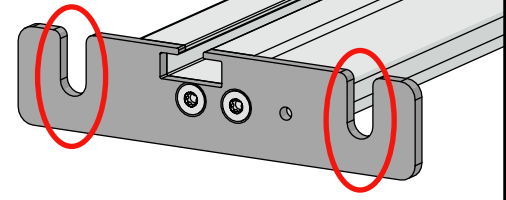
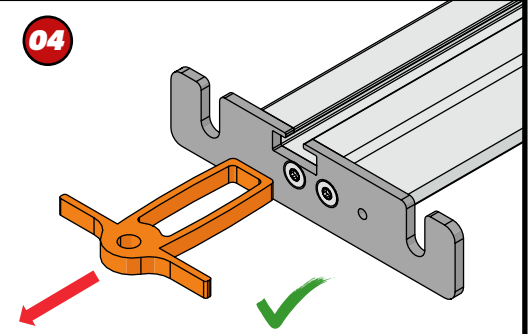
X4

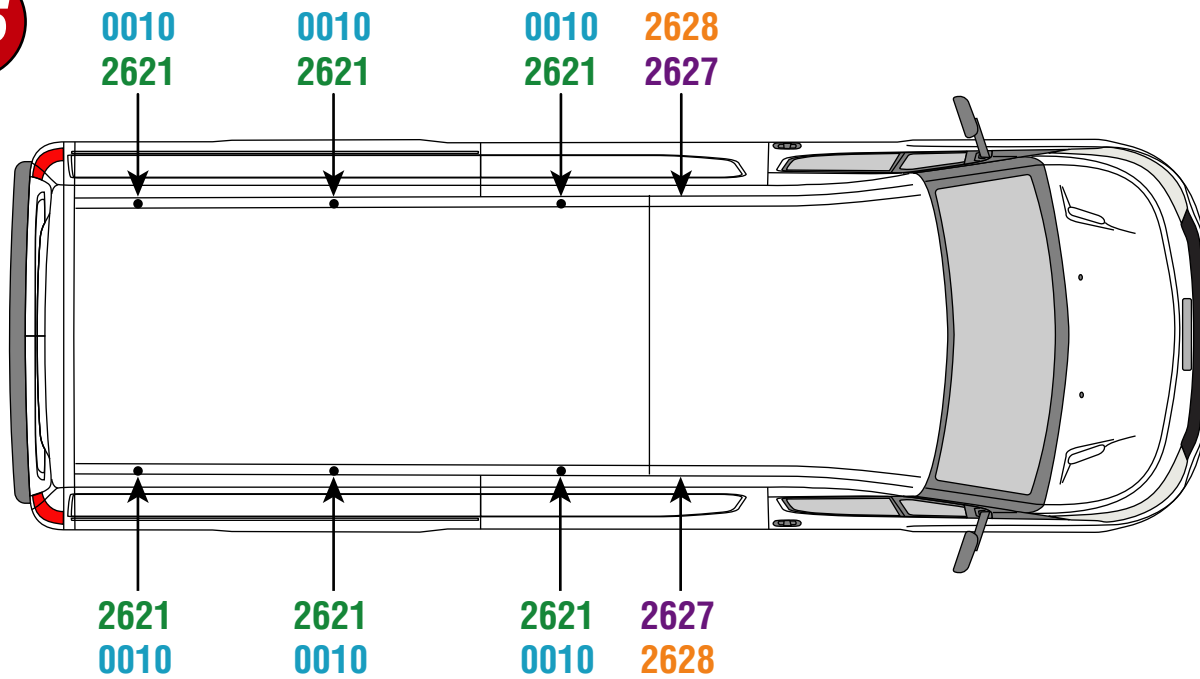
03



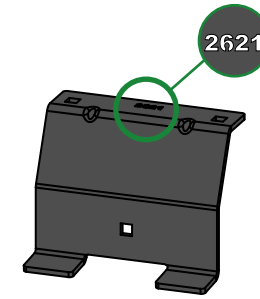
11Nm

04

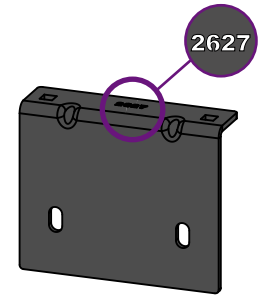


**05**

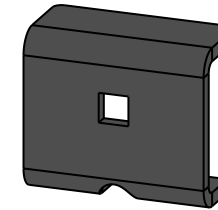
2621



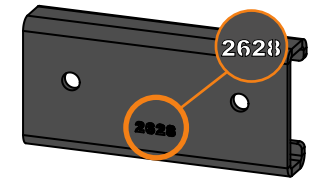
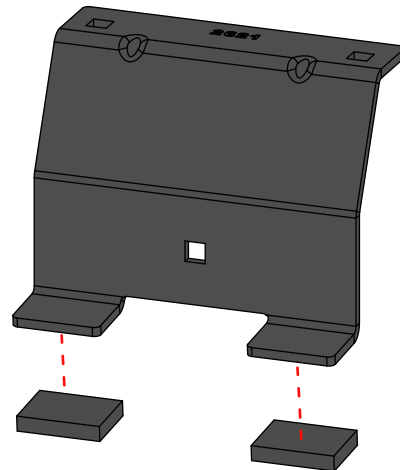
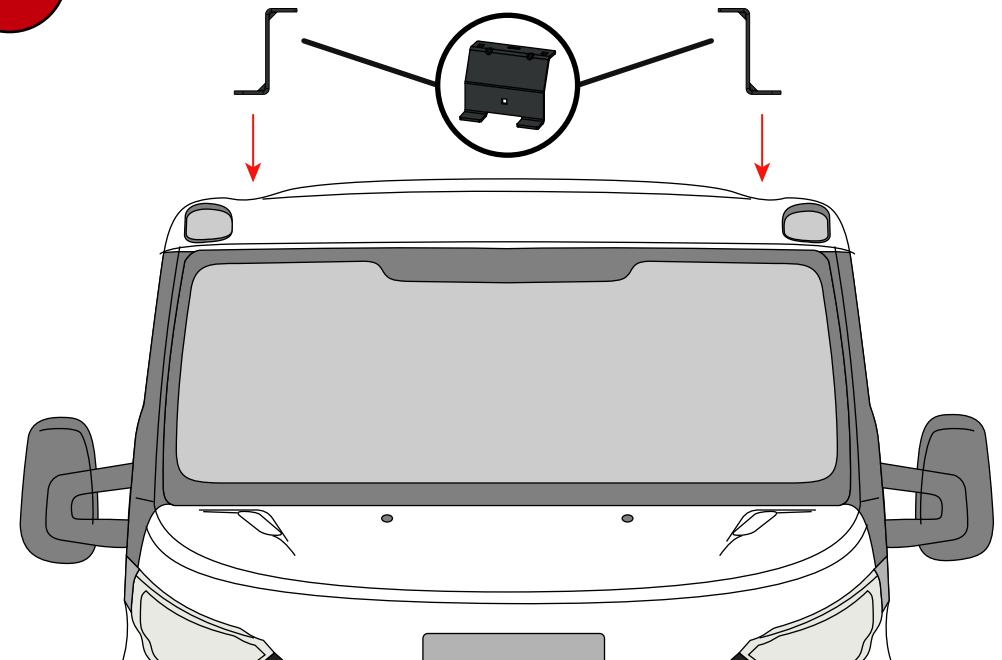
2627



0010

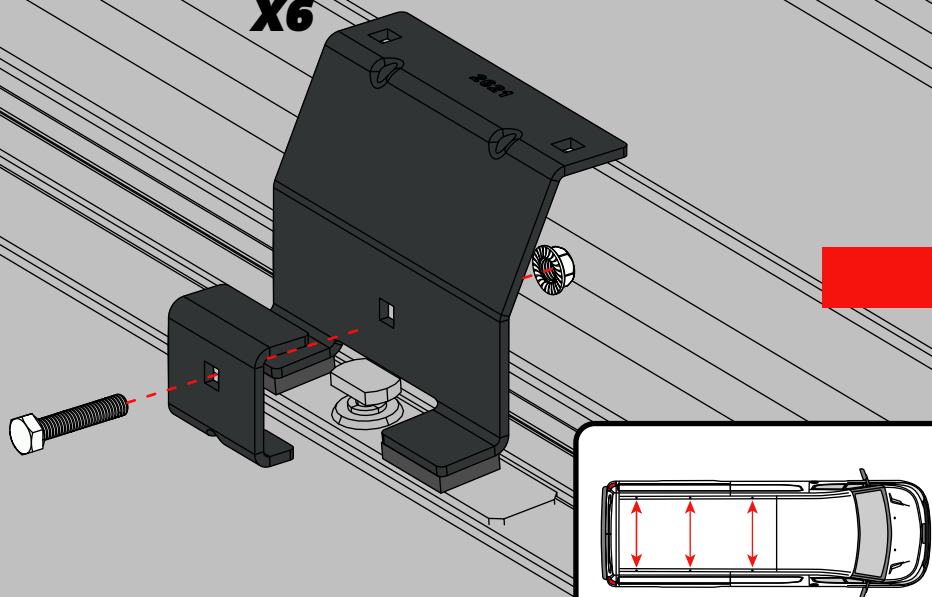
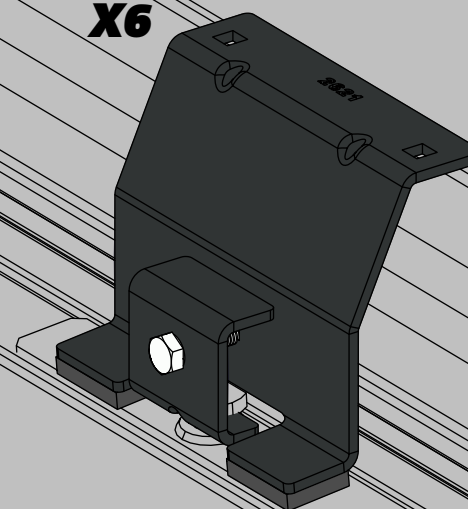
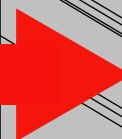
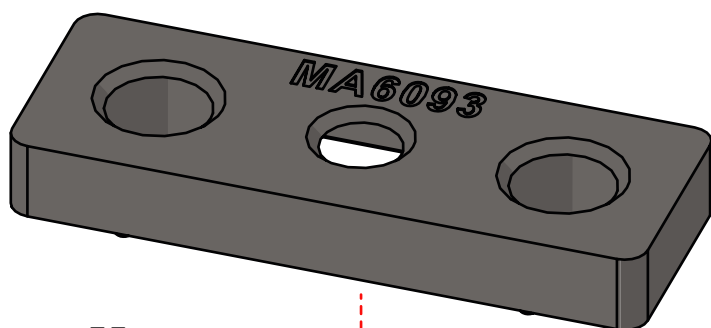
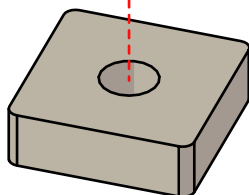
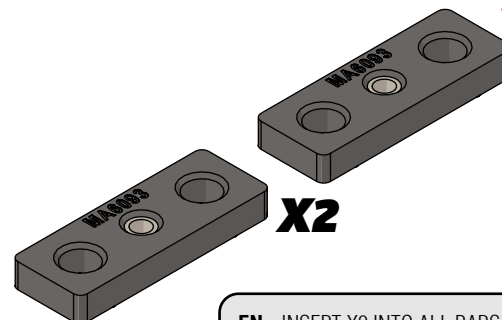


2628

**06****07**

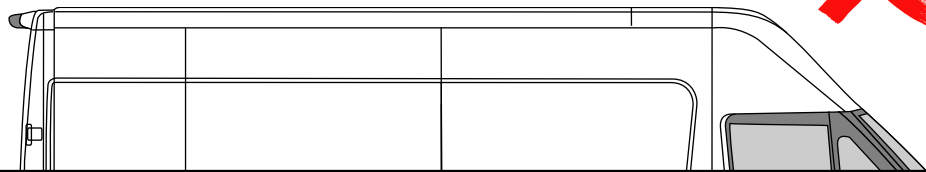
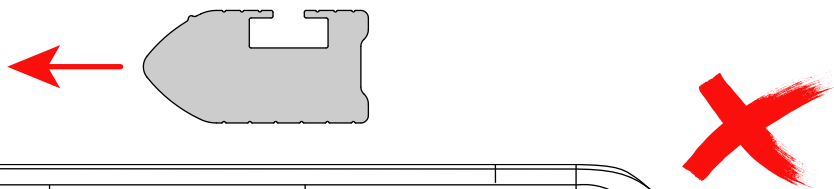
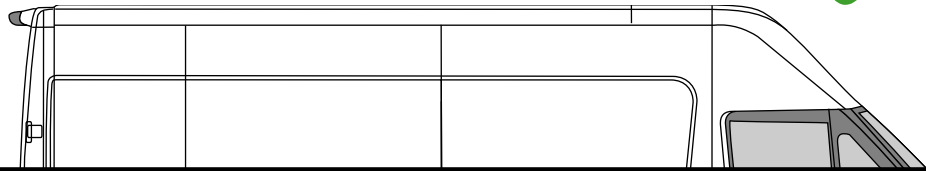
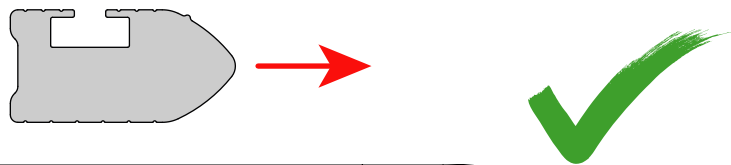
EN - STICK GASKETS TO ALL BRACKETS  
 DE - KLEBEN SIE DIE DICHTUNG AN ALLEN HALTERUNGEN  
 FR - COUSSINETS ADHÉSIFS À TOUS LES SUPPORTS  
 NL - PLAK PAKKING OP ALLE BEUGELS  
 ES - PEGA LAS ALMOHADILLAS A TODOS LOS SOPORTES  
 IT - ADESIVI GUARNIZIONI A TUTTE LE STAFFE

SV - FÄST GUMMI PÅ ALLA FÄSTEN  
 DA - KLÆB GUMMI PÅ ALLE BESLAG  
 NO - PLIST GUMMI PÅ ALLE BRAKKETTER  
 PL - NAKLEJ USZCZELKI DO WSZYSTKICH WSPORNIKÓW  
 CS - PŘILEPTE TĚSNĚNÍ NA VŠECHNY DRŽÁKY

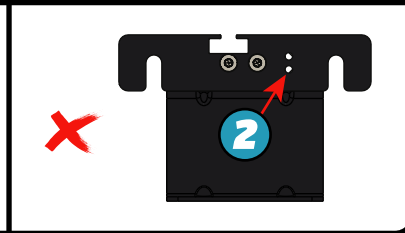
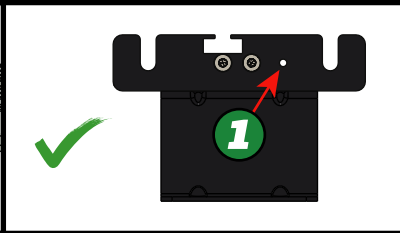
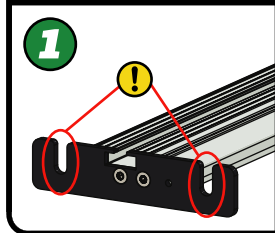
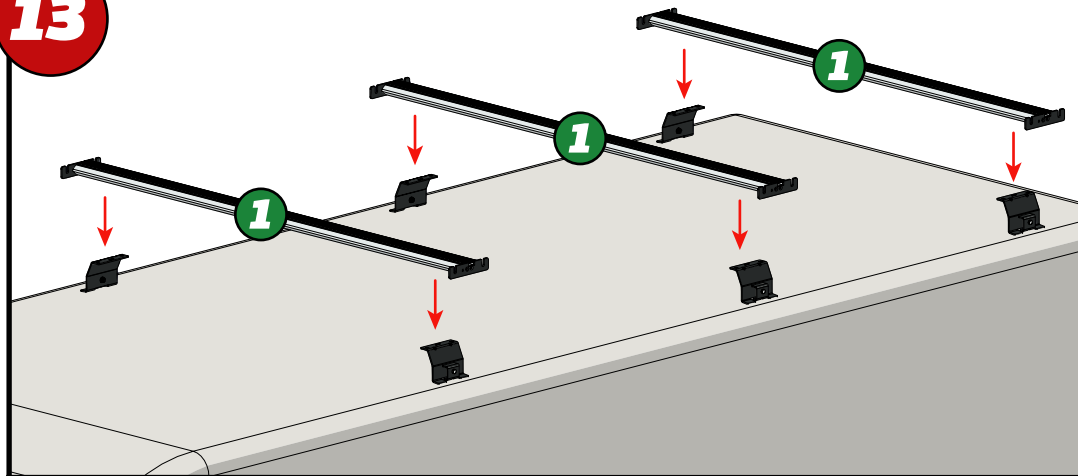
**08****X6****09****X6****10****X14****11****X2**

**EN** - INSERT X2 INTO ALL BARS  
**DE** - X2 IN ALLE STANGEN EINFÜGEN  
**FR** - INSÉRER X2 DANS TOUTES LES BARRES  
**NL** - PLAATS X2 IN ALLE BARS  
**ES** - INSERTAR X2 EN TODAS LAS BARRAS  
**IT** - INSERIRE X2 IN TUTTE LE BARRE  
**SV** - INFOGA X2 I ALLA STÄNGAR  
**DA** - INDSÆT X2 I ALLE STÆNGER  
**NO** - SETT X2 INN I ALLE TAKSTENGER  
**PL** - WSTAW X2 DO WSZYSTKICH PRĘTÓW  
**CS** - VLOŽTE X2 DO VŠECH TYČÍ

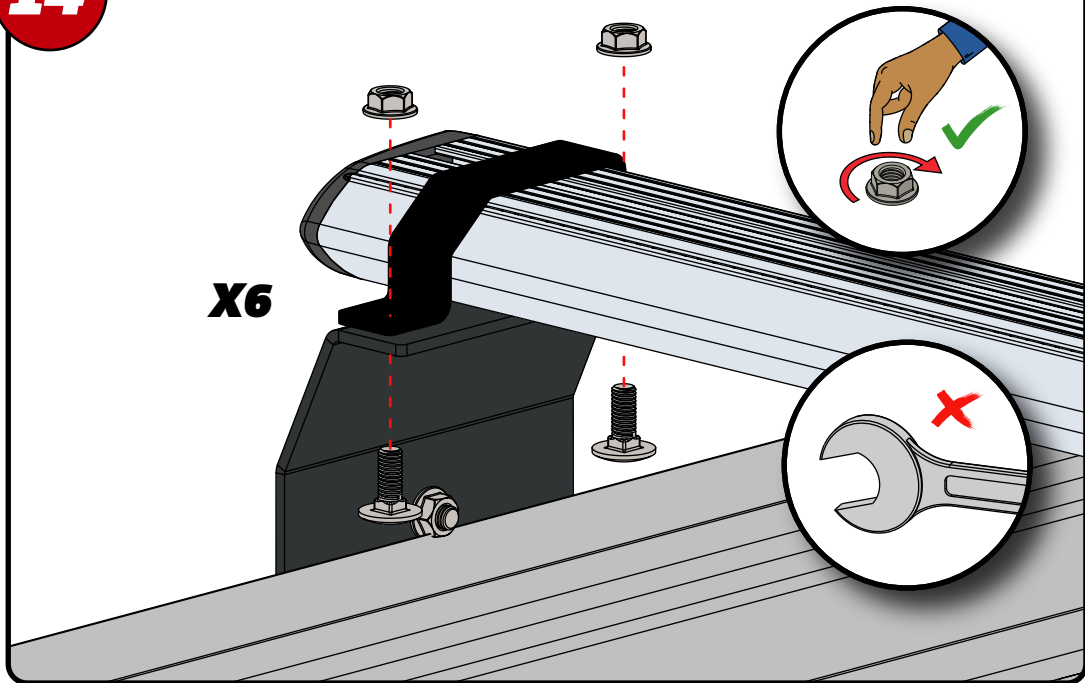
12



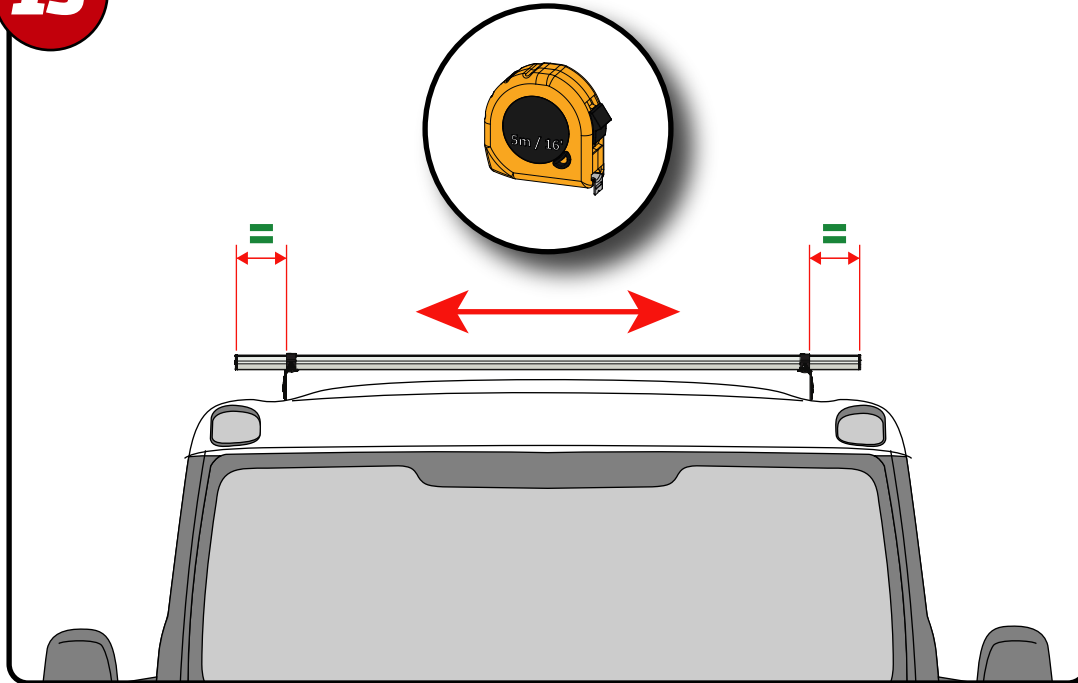
13



14



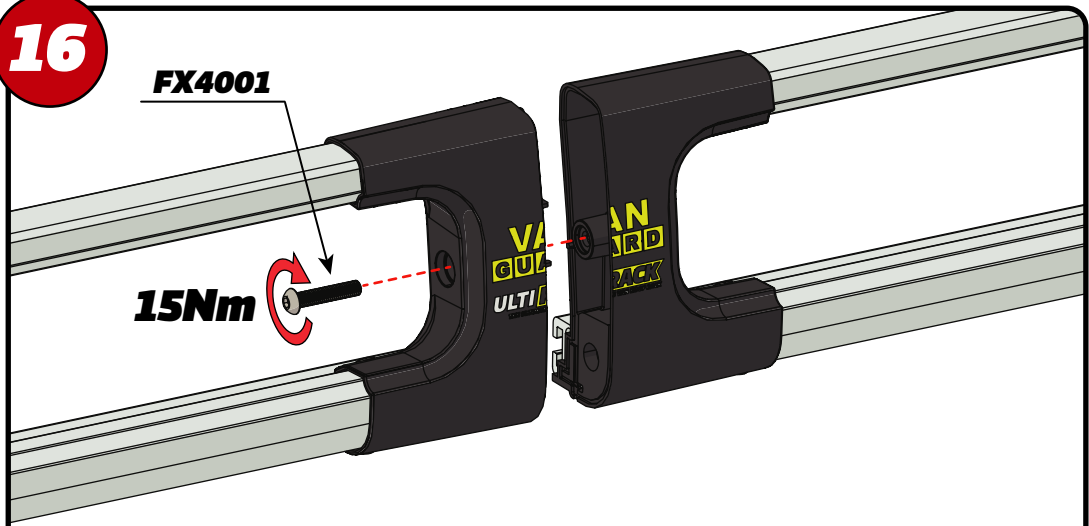
15



16

FX4001

15Nm



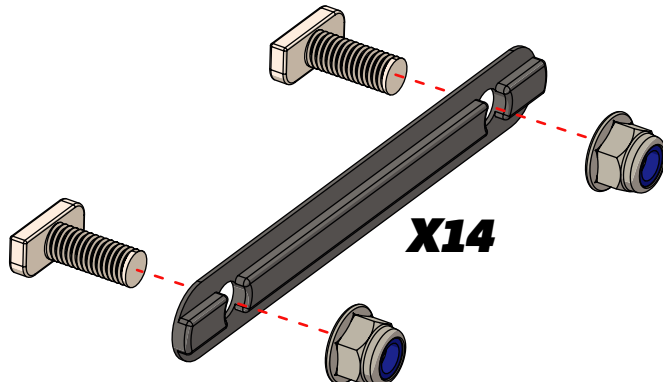
X2



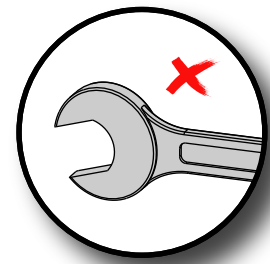
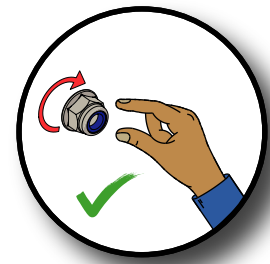
FX4008



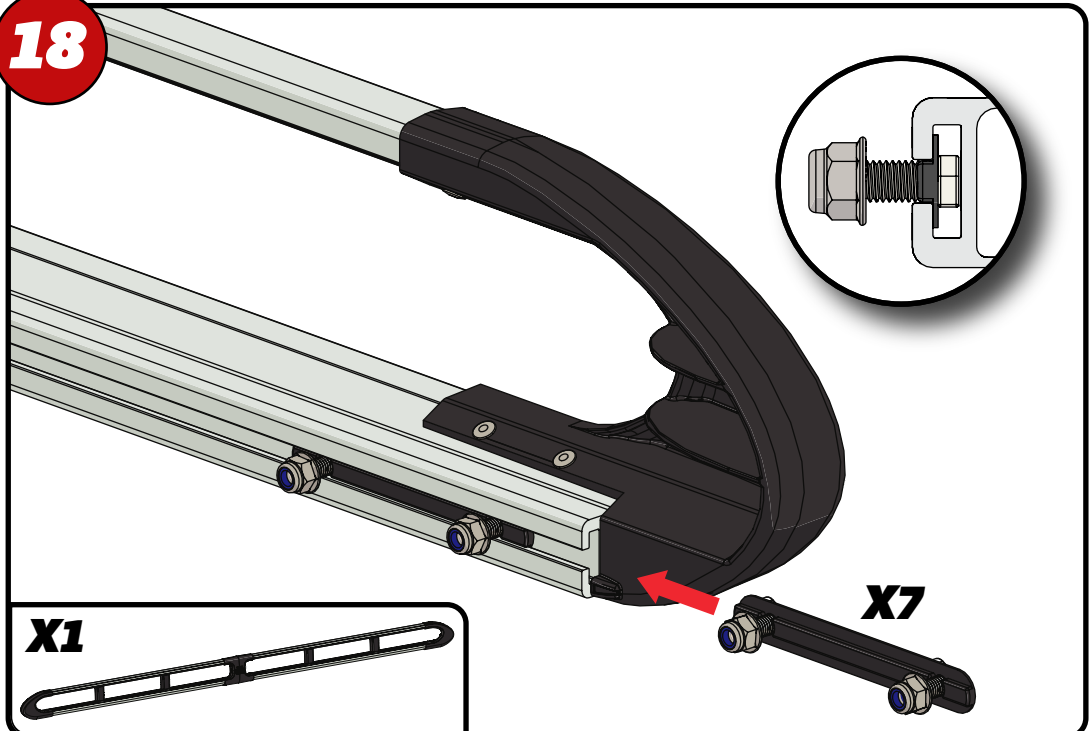
17



X14



18



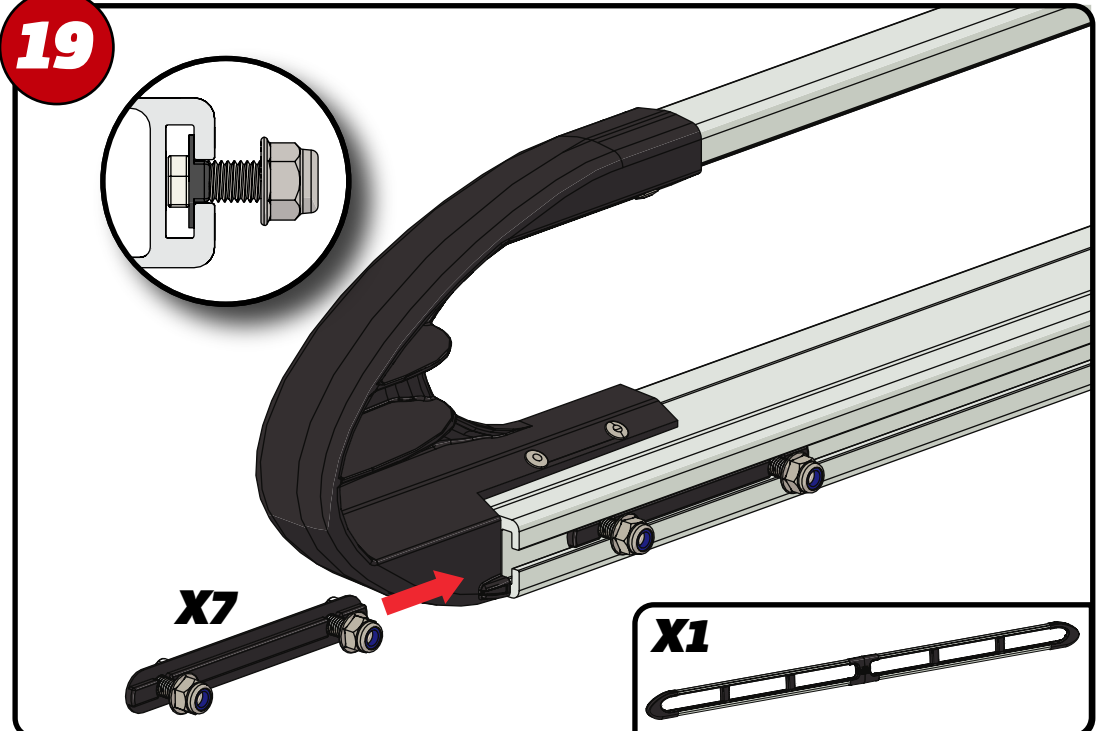
X1



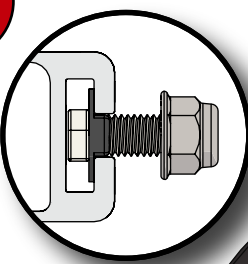
X7



19



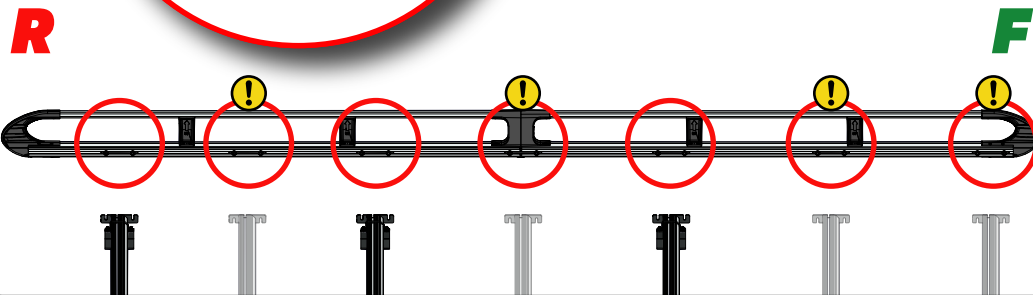
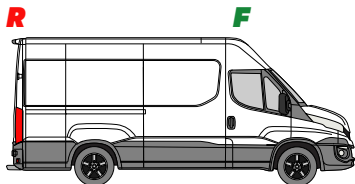
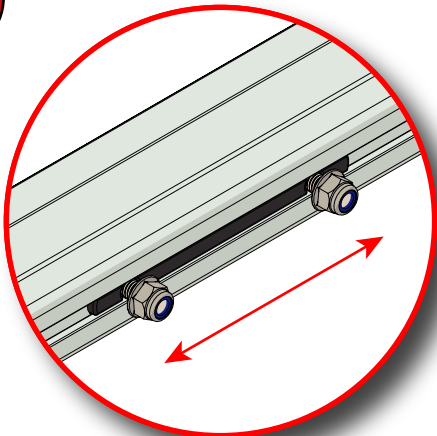
X7



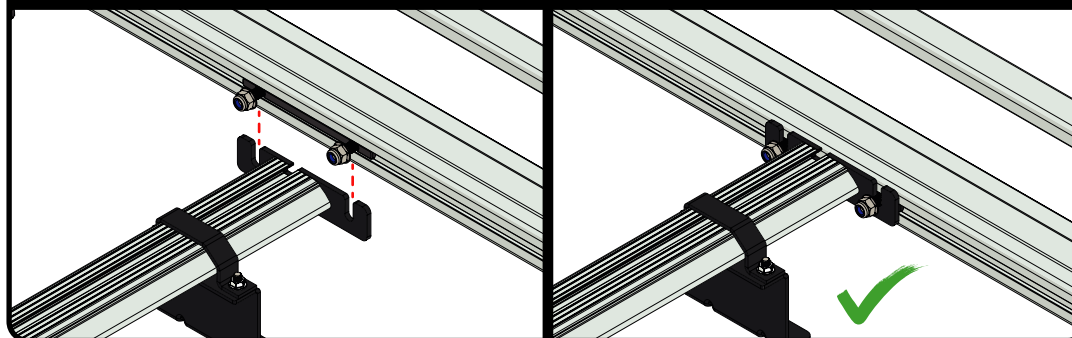
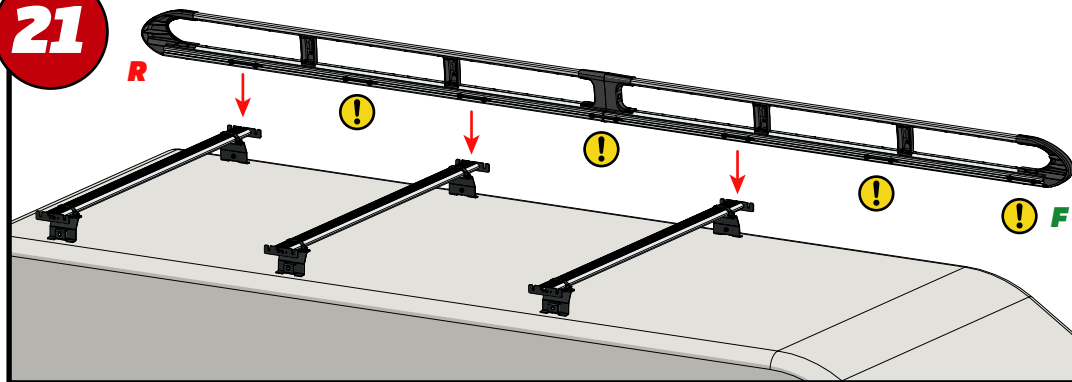
X1



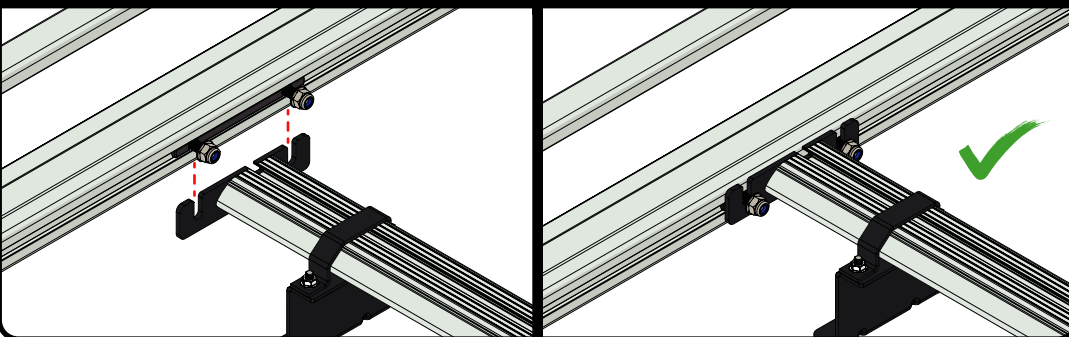
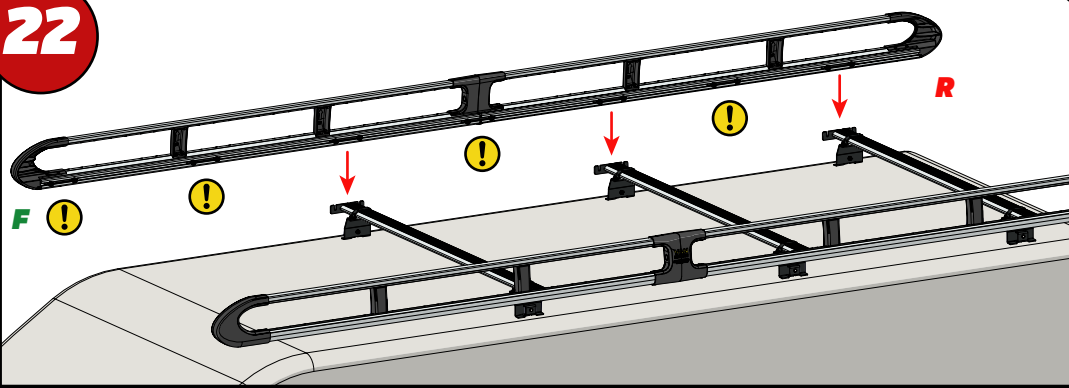
20



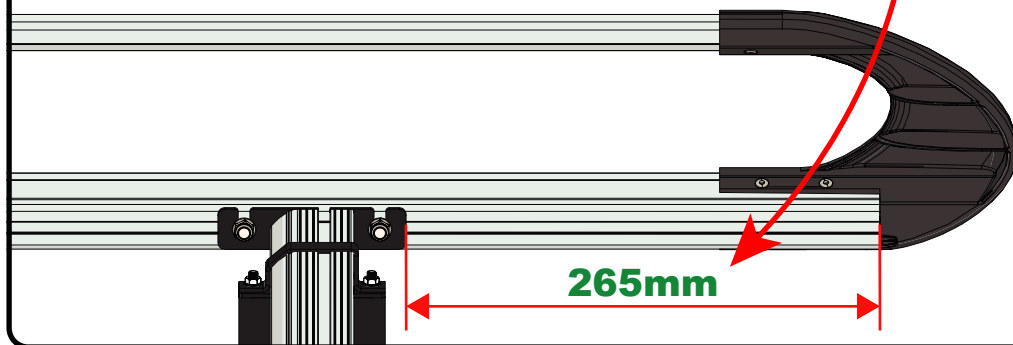
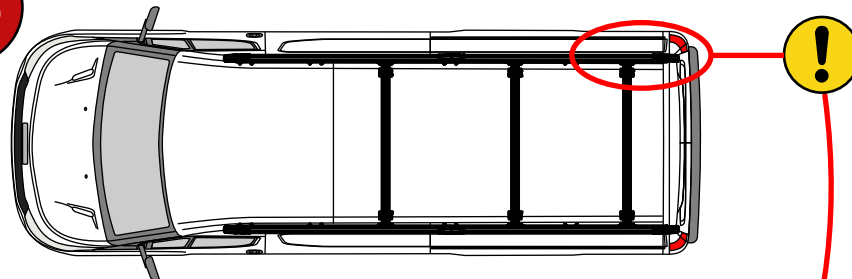
21



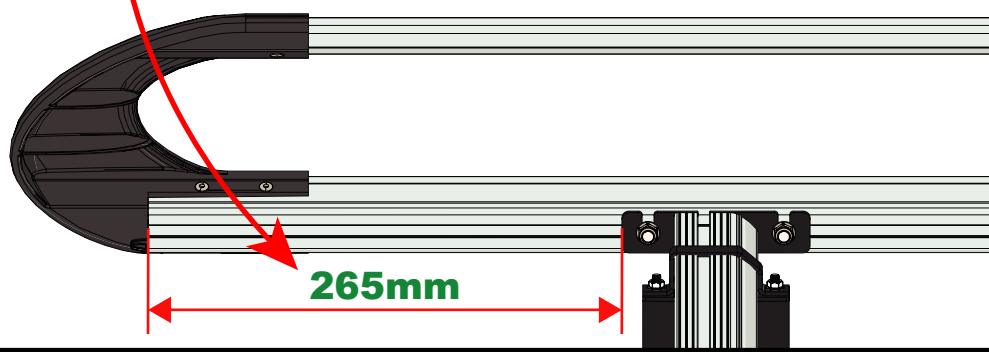
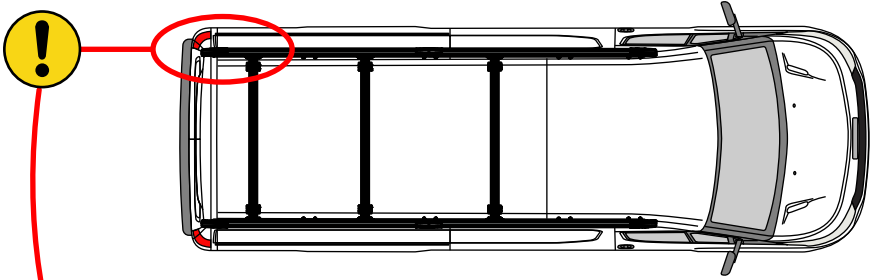
22



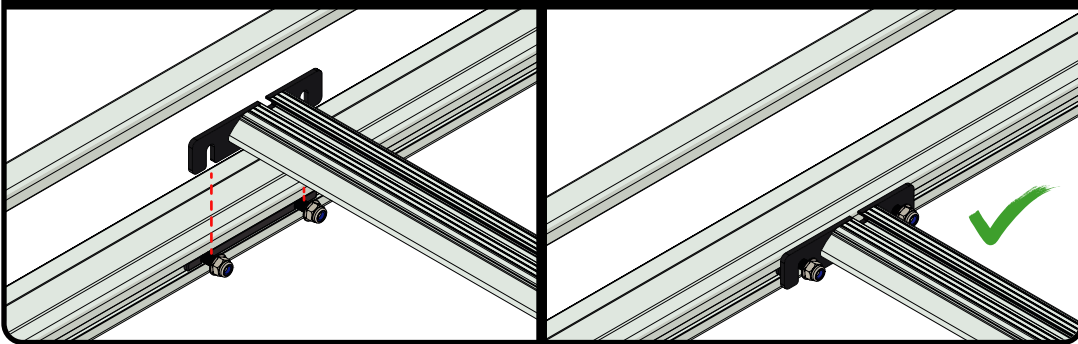
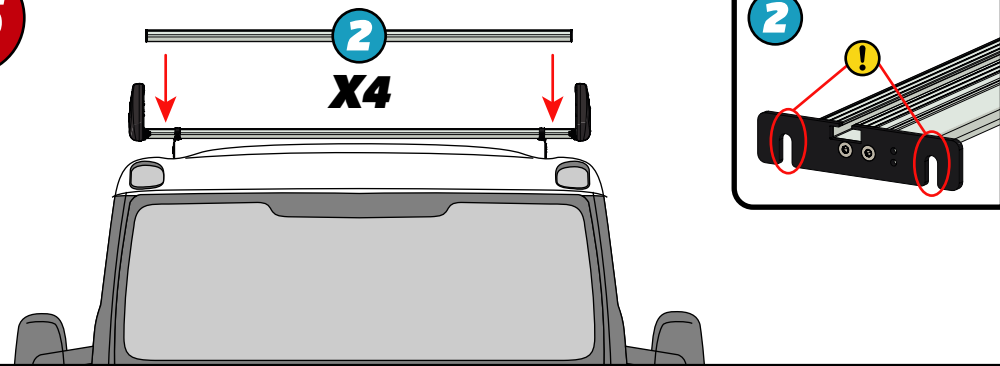
23



24

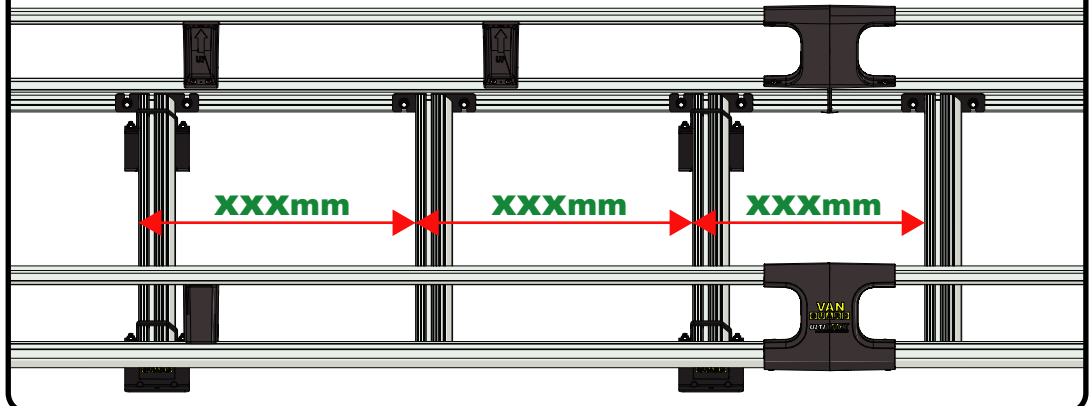
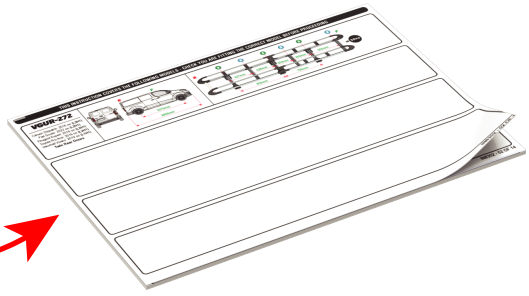


25

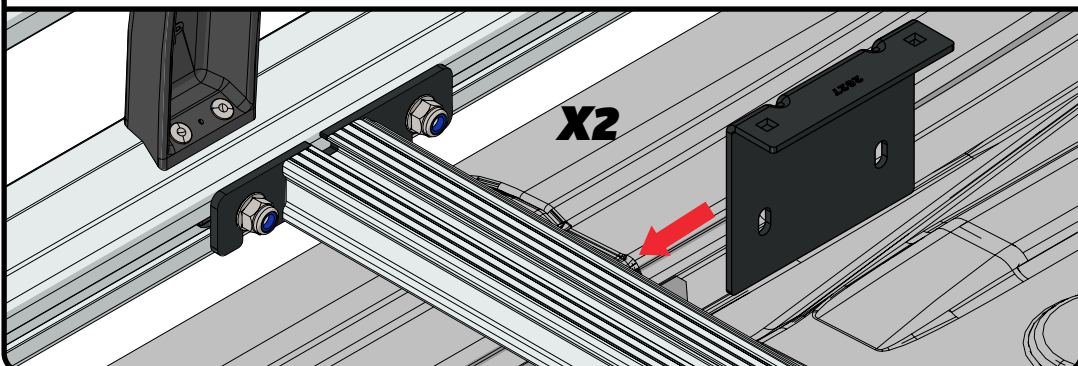
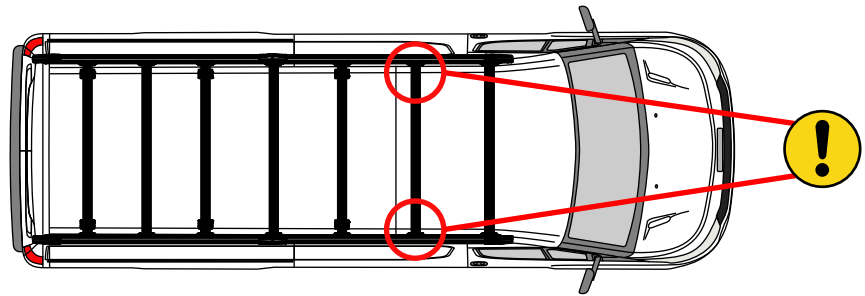


26

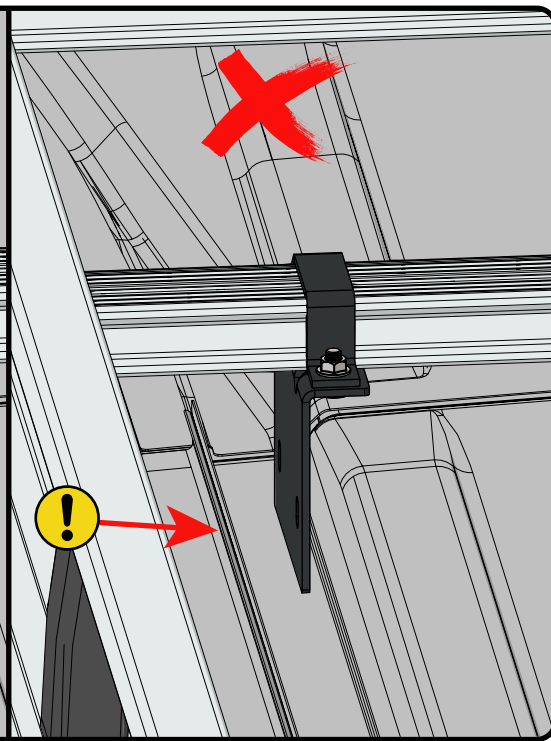
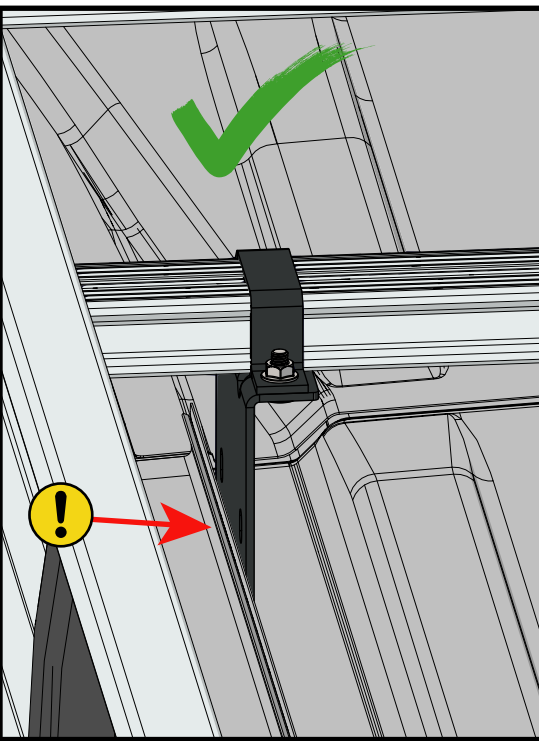
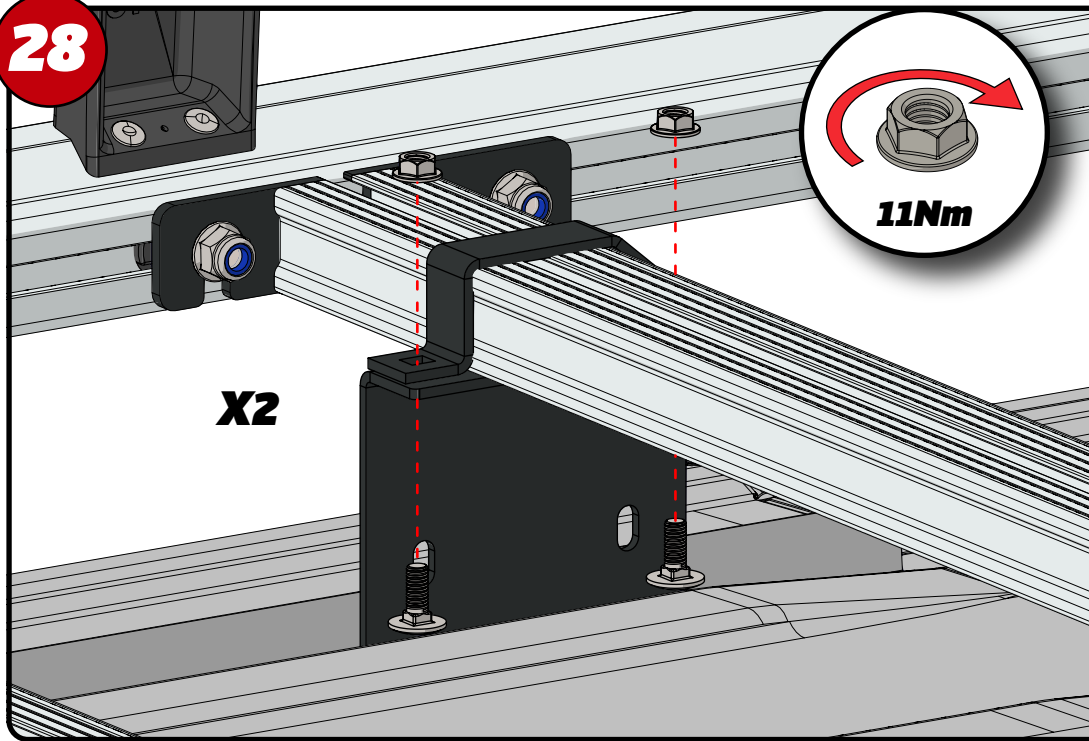
XXX = PAGE 2 OF 16



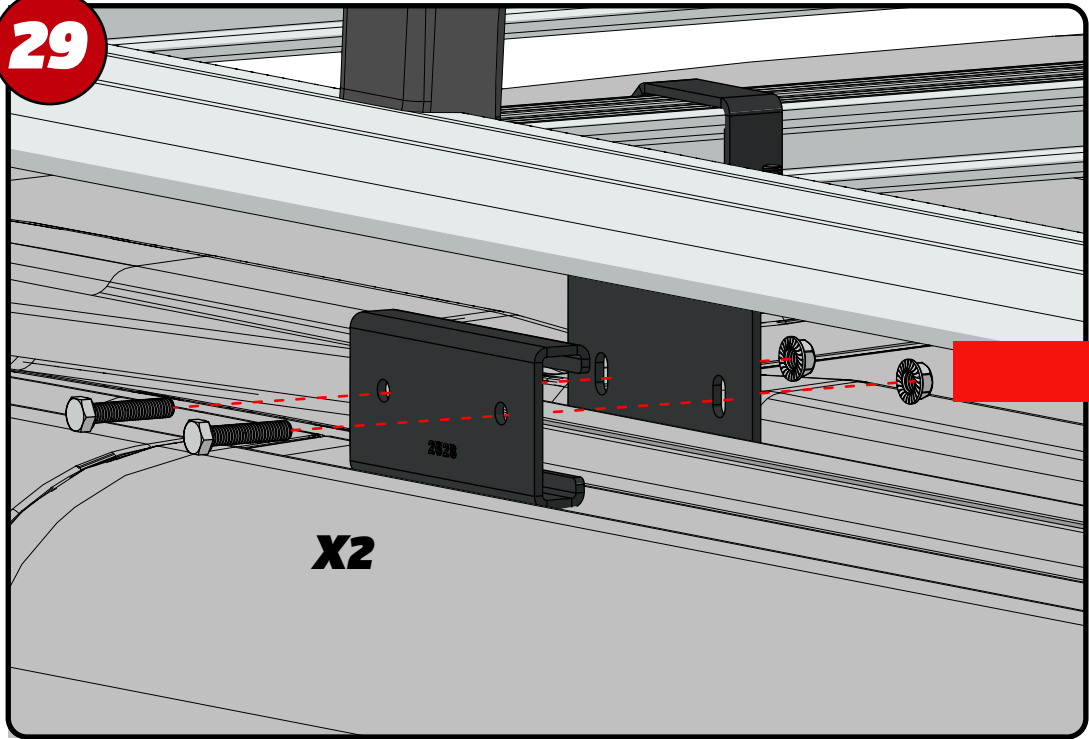
27



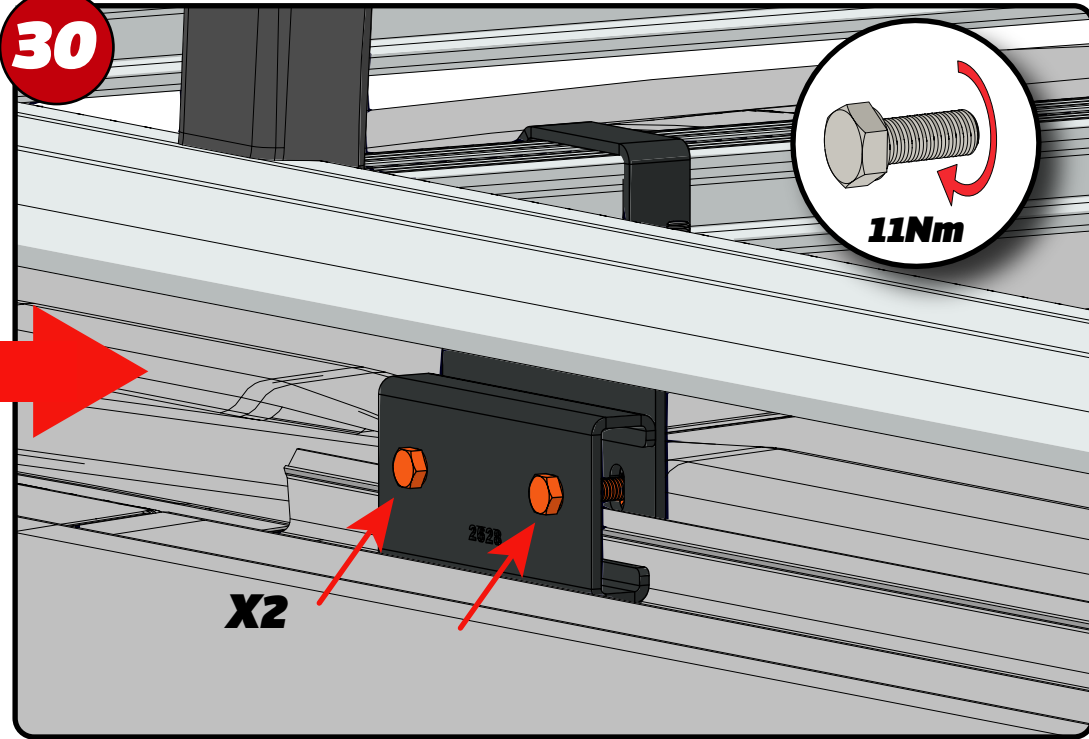
28

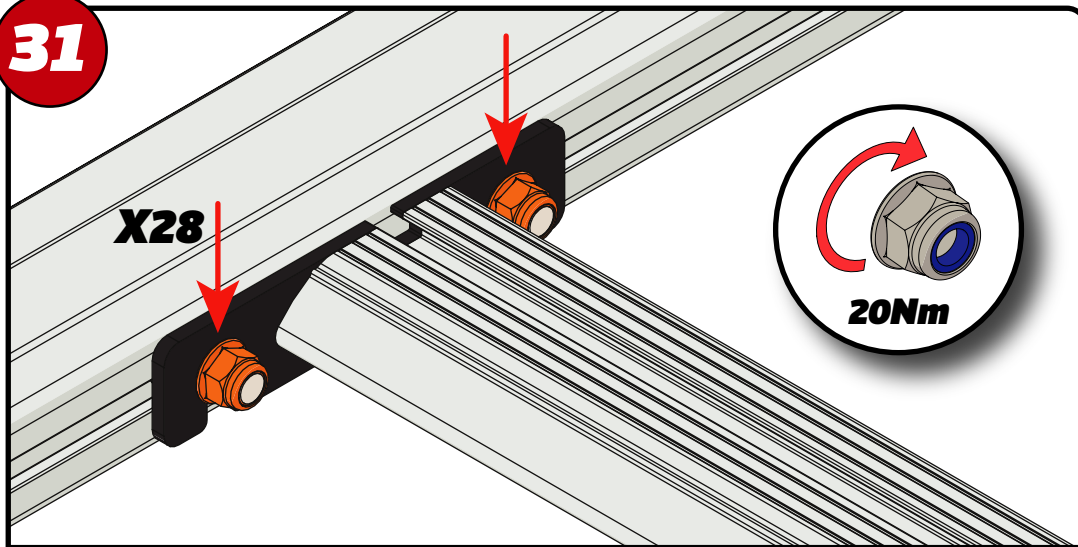
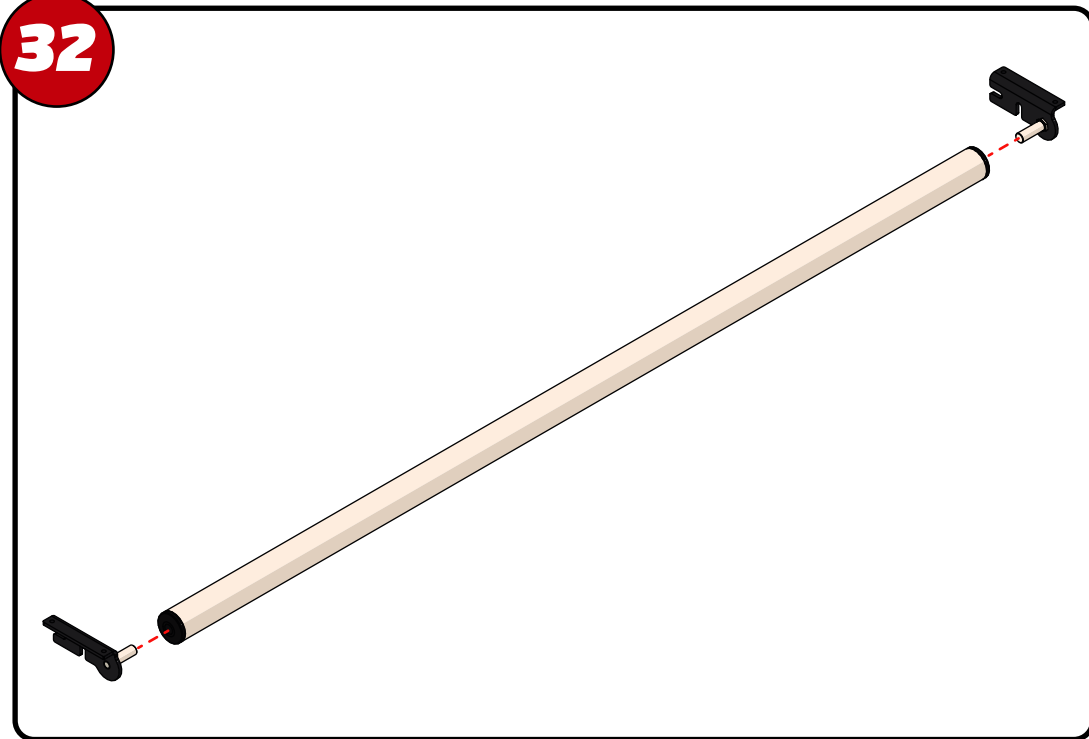
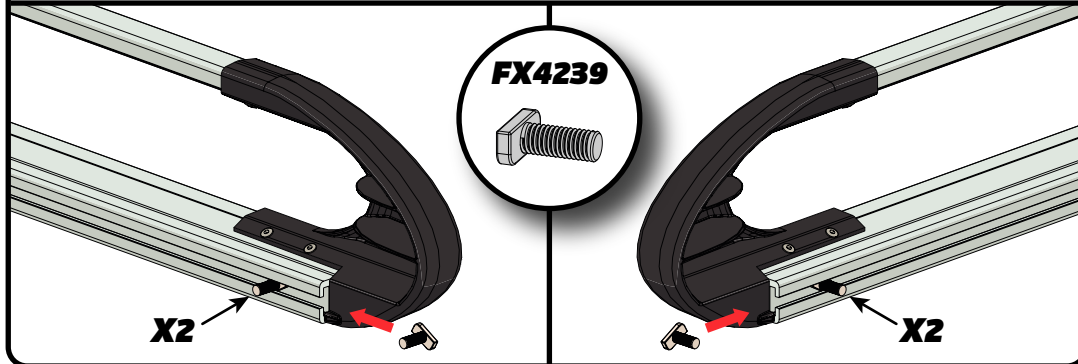
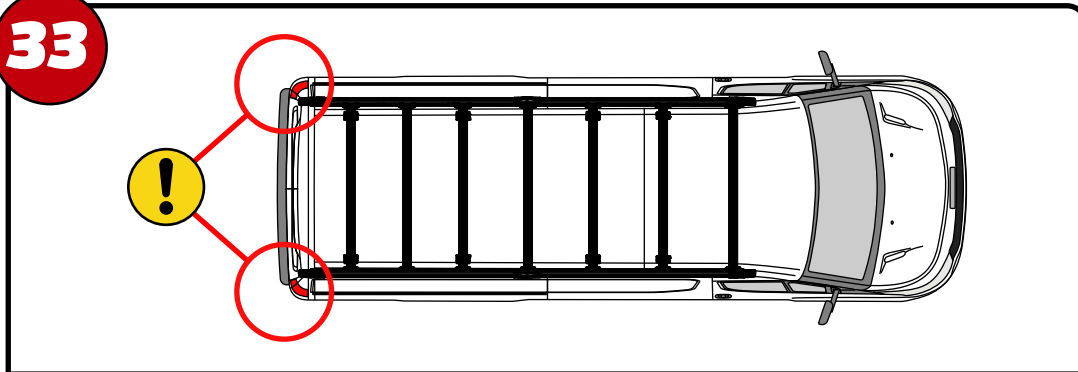
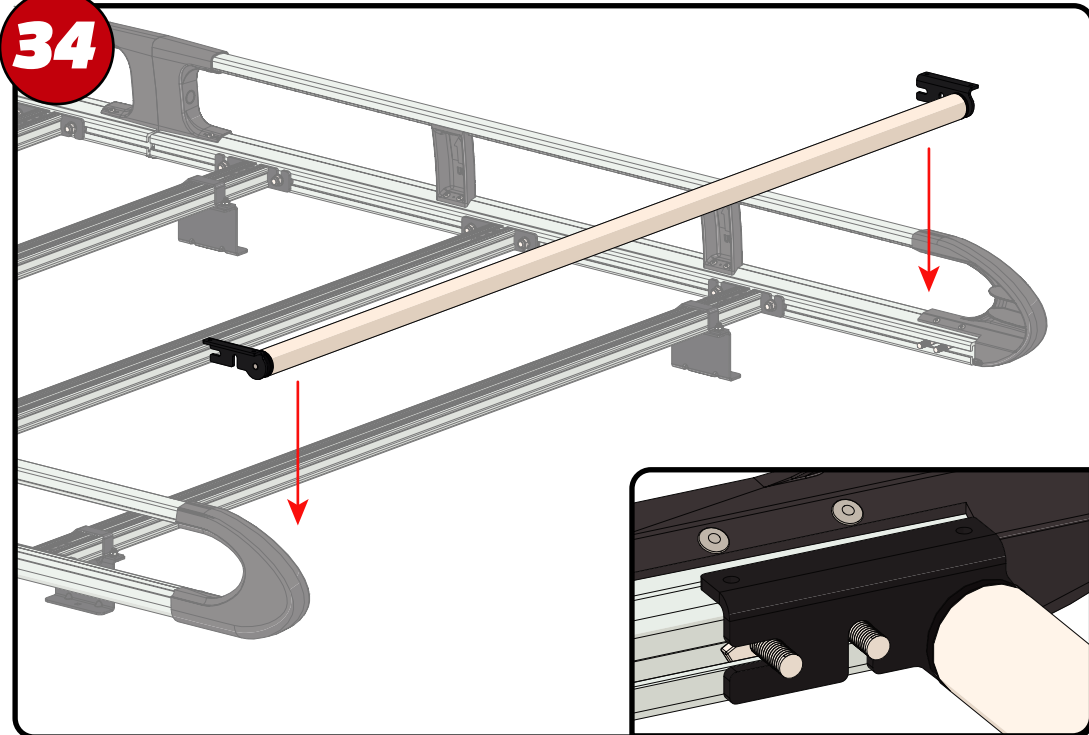


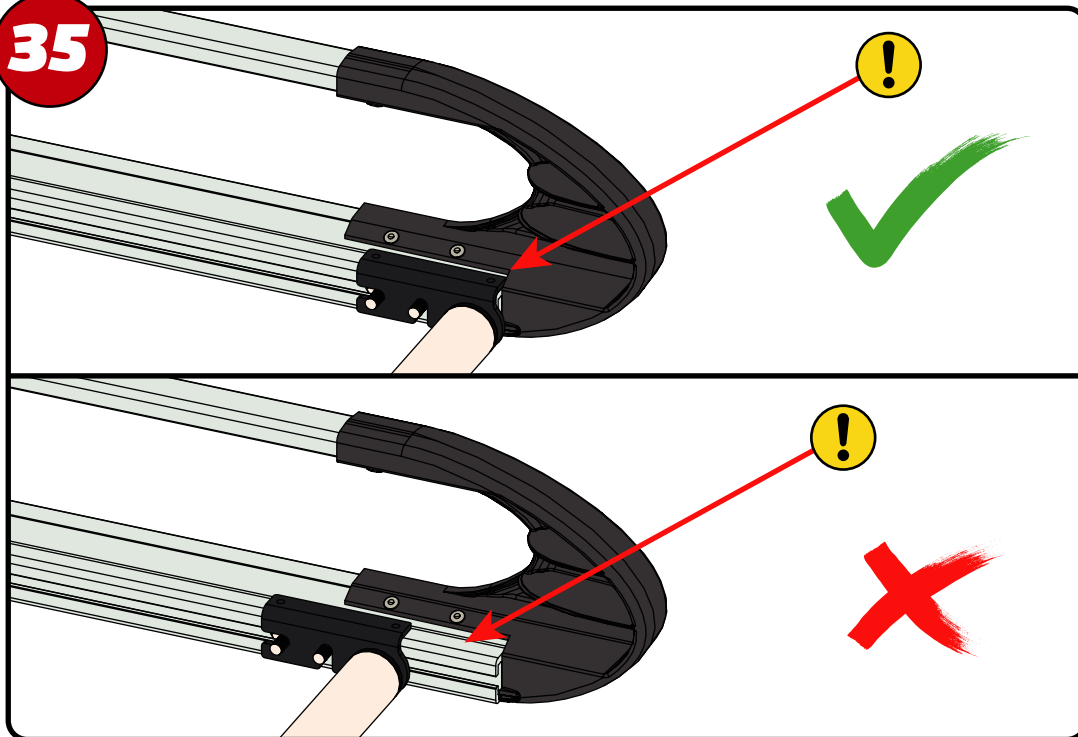
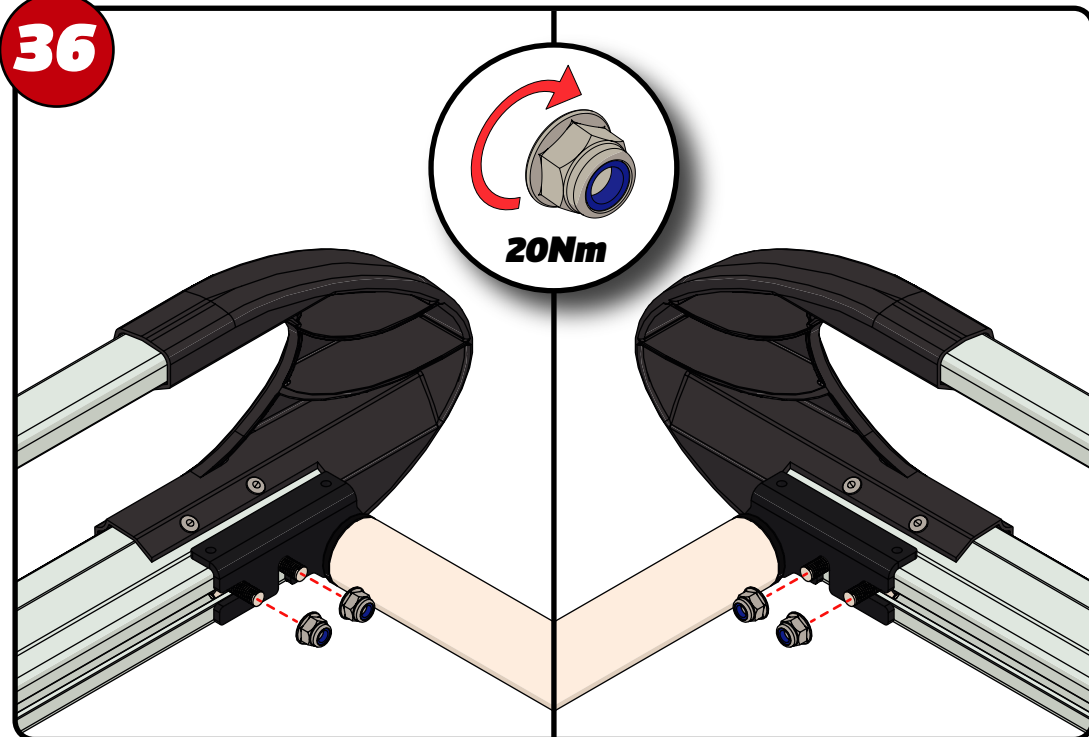
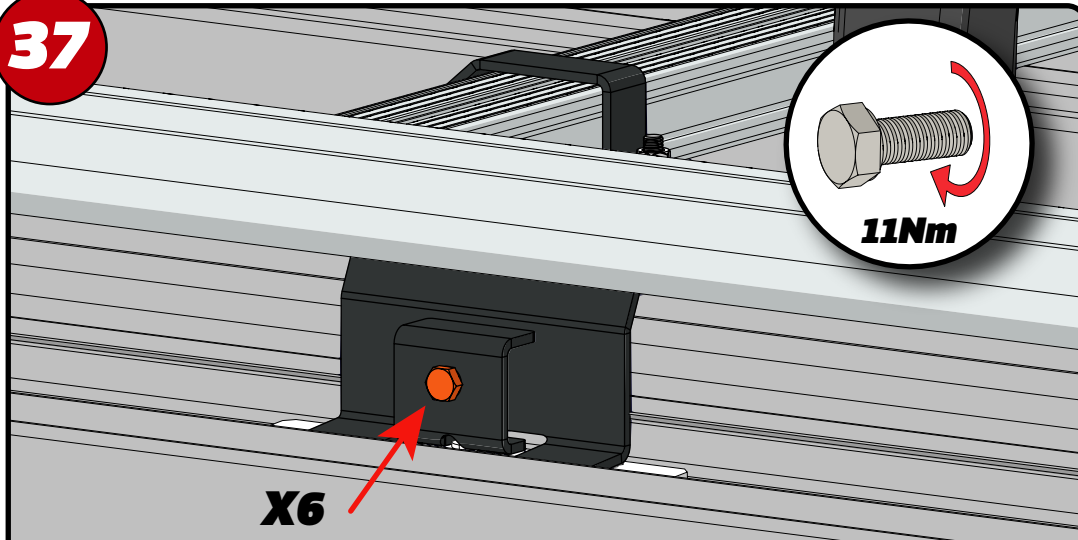
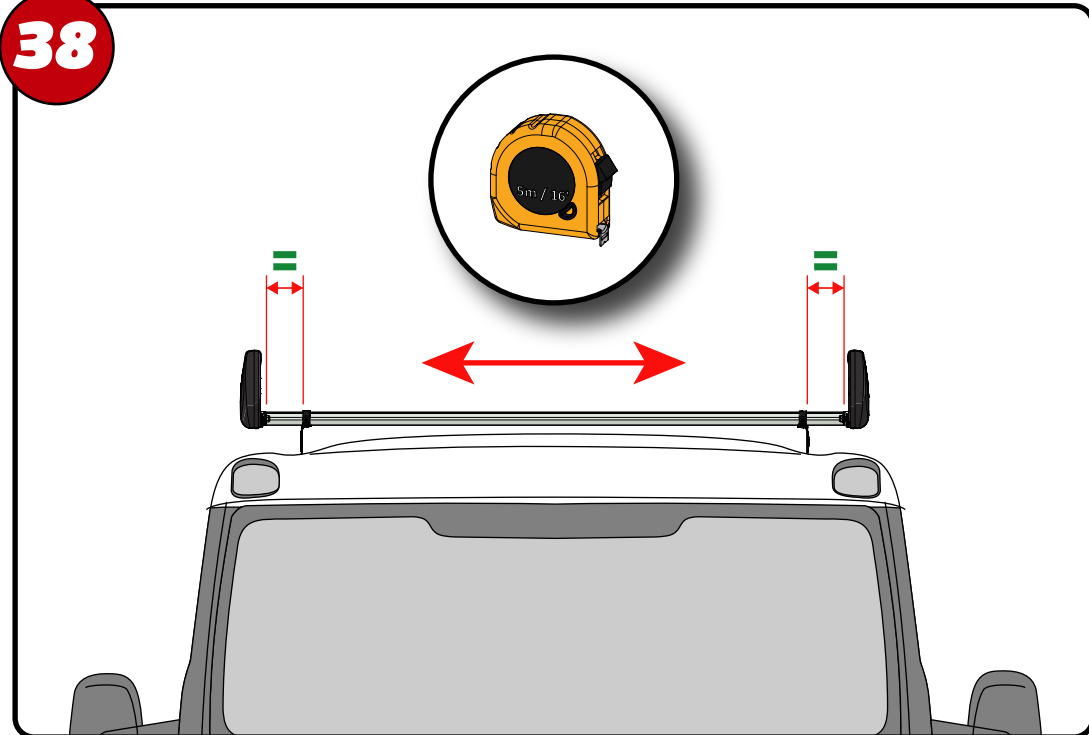
29



30



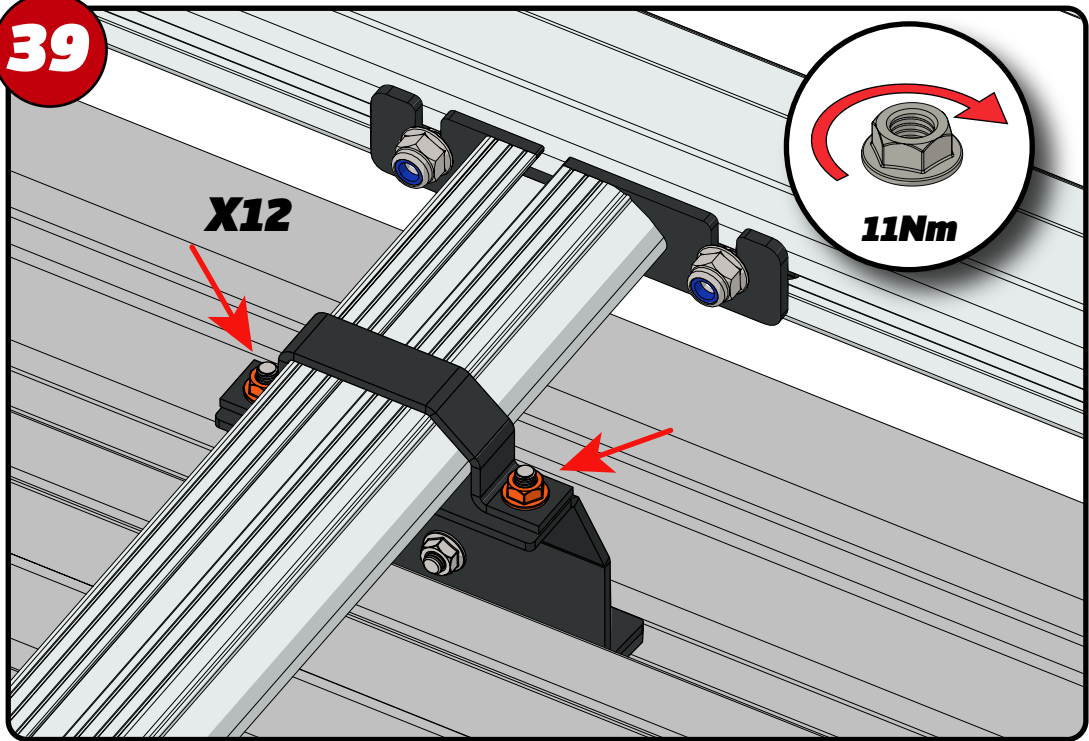
**31****X28****20Nm****EN** - TIGHTEN ALL OF THE CROSS BARS**DE** - ALLE QUERSTANGEN FESTZIEHEN**FR** - SERREZ TOUTES LES BARRES TRANSVERSALES**NL** - DRAAI ALLE DWARSBALK VAN HET DAK AAN**ES** - APRIETE TODAS LAS BARRAS TRANSVERSALES**IT** - STRINGERE TUTTE LE BARRE TRASVERSALI**SV** - SKRU UPP ALLA KORSSTANGAR**DA** - SKRU ALLE TAGBØJLER OP**NO** - SKRU OPP ALLE TVERRSTENGER**PL** - DOKRĘCIĆ WSZYSTKIE POPRZECZKI**CS** - VŠECHNY PRÍČNÉ TYČE SEŠROUJTE**32****33****FX4239****X2****X2****34**

**35****36****37****38**

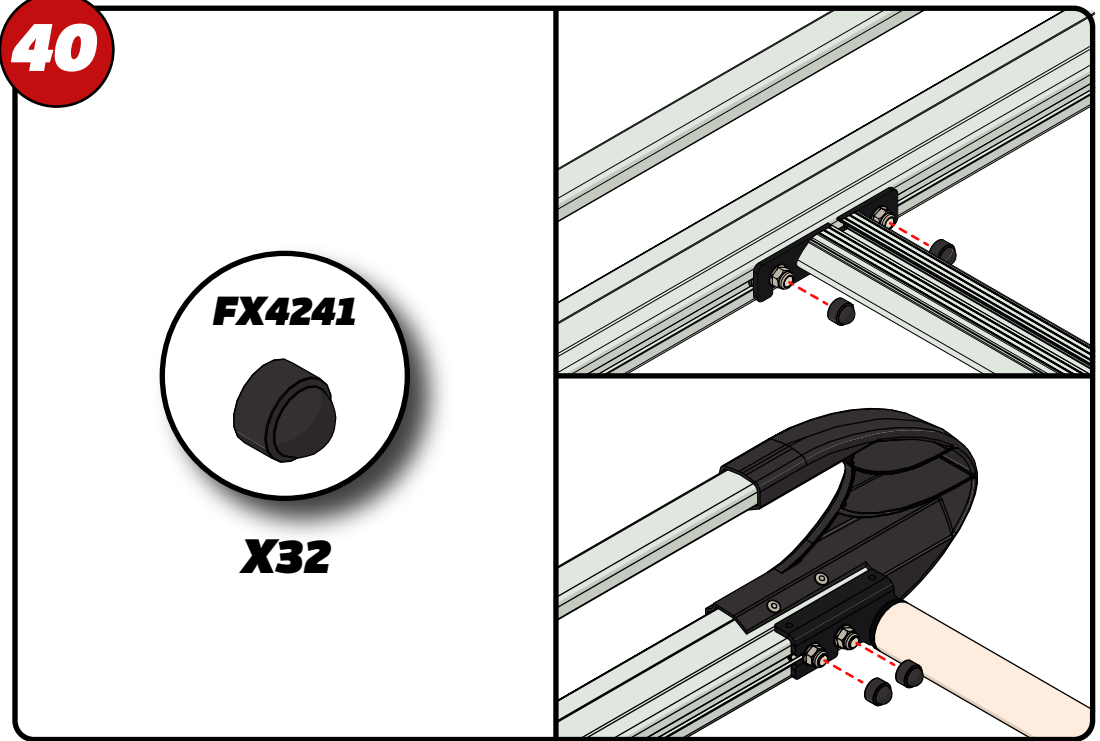
EN - HOLD THE BRACKET STRAIGHT WHILE TIGHTENING  
 DE - HALTEN SIE DIE HALTERUNG BEIM FESTZIEHEN GERADE  
 FR - TENIR LE SUPPORT DROITE PENDANT LE SERRAGE  
 NL - BEUGEL RECHT HOUDEN TIJDENS HET AANDRAAIEN  
 ES - MANTENGA EL SOPORTE RECTO MIENTRAS APRIETE  
 IT - TENERE LA STAFFA DIRITTA DURANTE IL SERRAGGIO

SV - HÅLL FÄSTET RAKT MEDAN DU DRAR ÅT  
 DA - HOLD BESLAGET LIGE, MENS DU STRAMMER  
 NO - HOLD BRAKETEN RETT MENS DU STRAMMES  
 PL - TRZYMAJ WSPORNIK PROSTO PODCZAS DOKRĘCANIA  
 CS - BĚHEM DOTAHOVÁNÍ DRŽTE DRŽÁK ROVNĚ

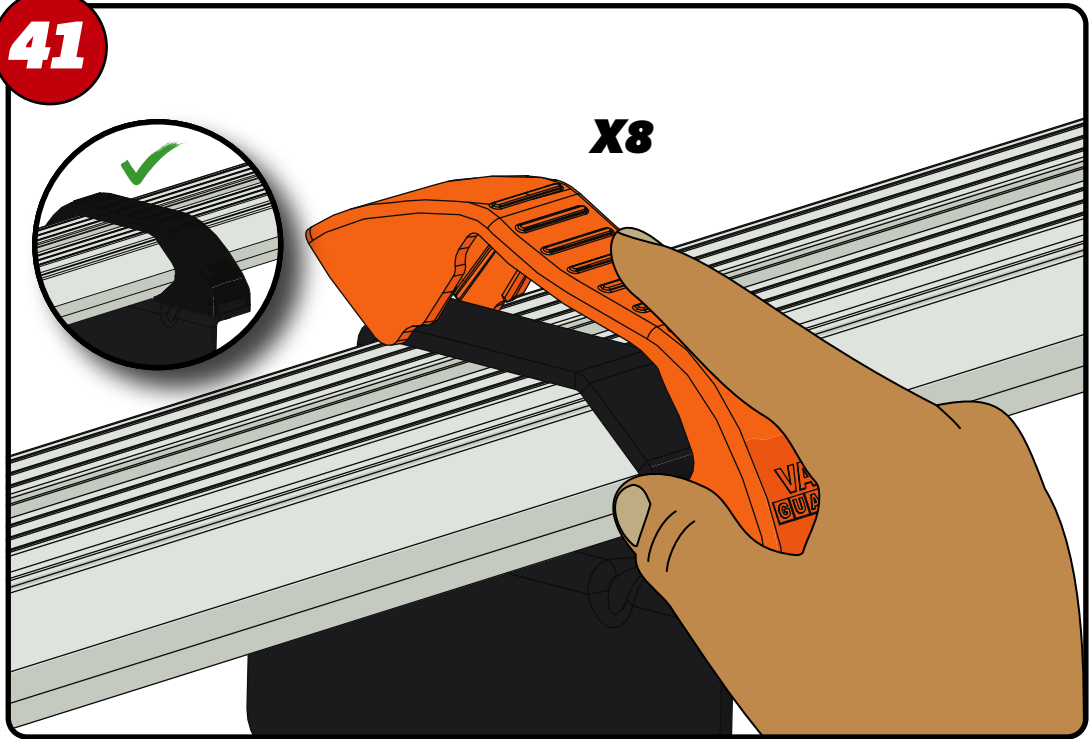
**39**



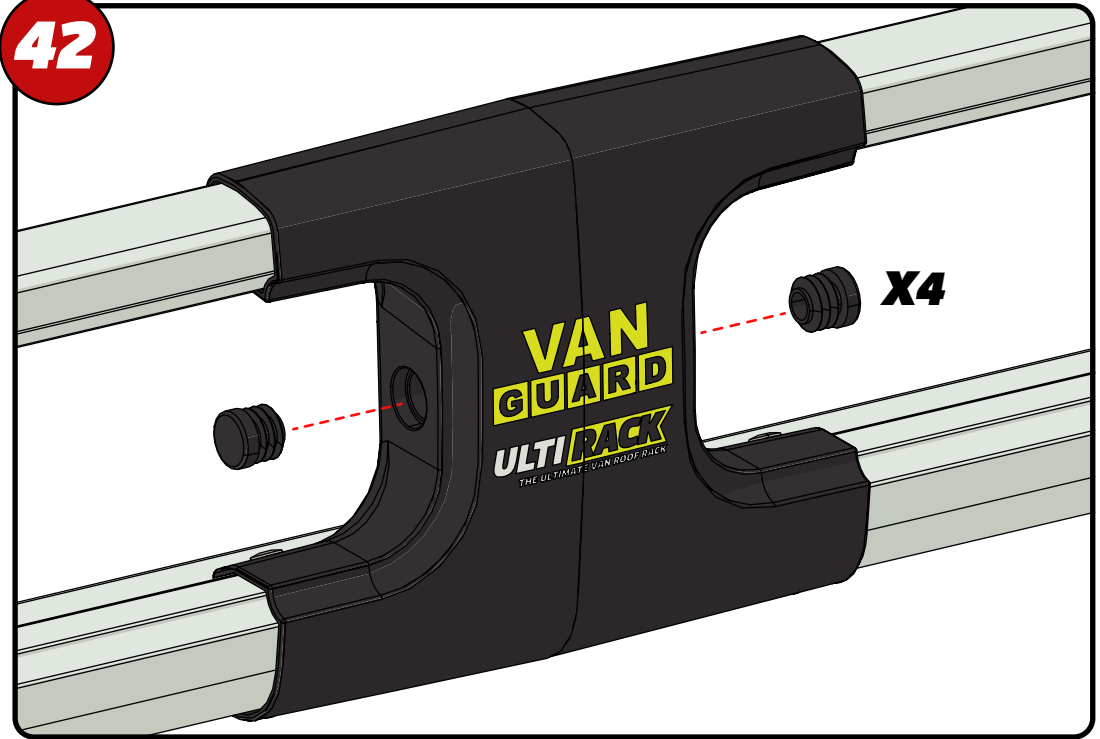
**40**



**41**



**42**



43

