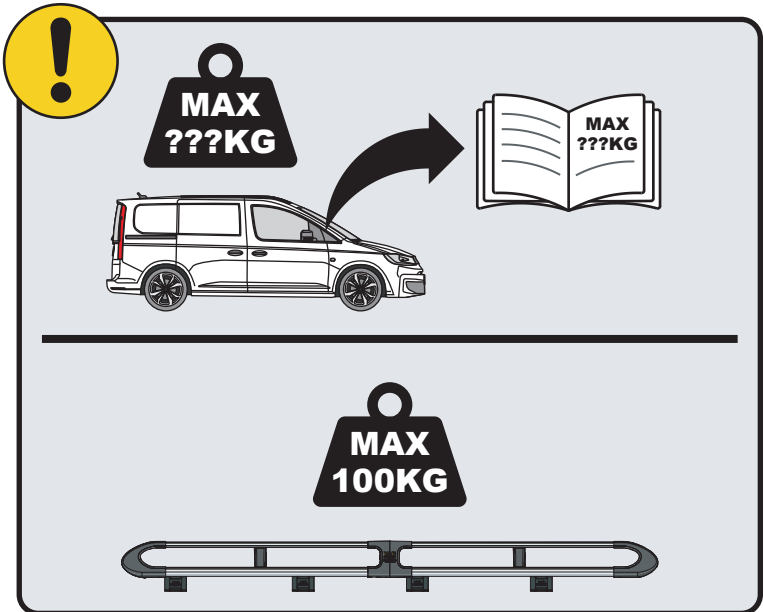
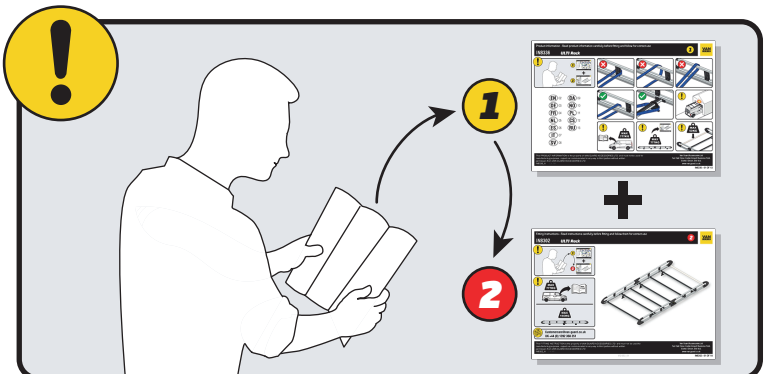
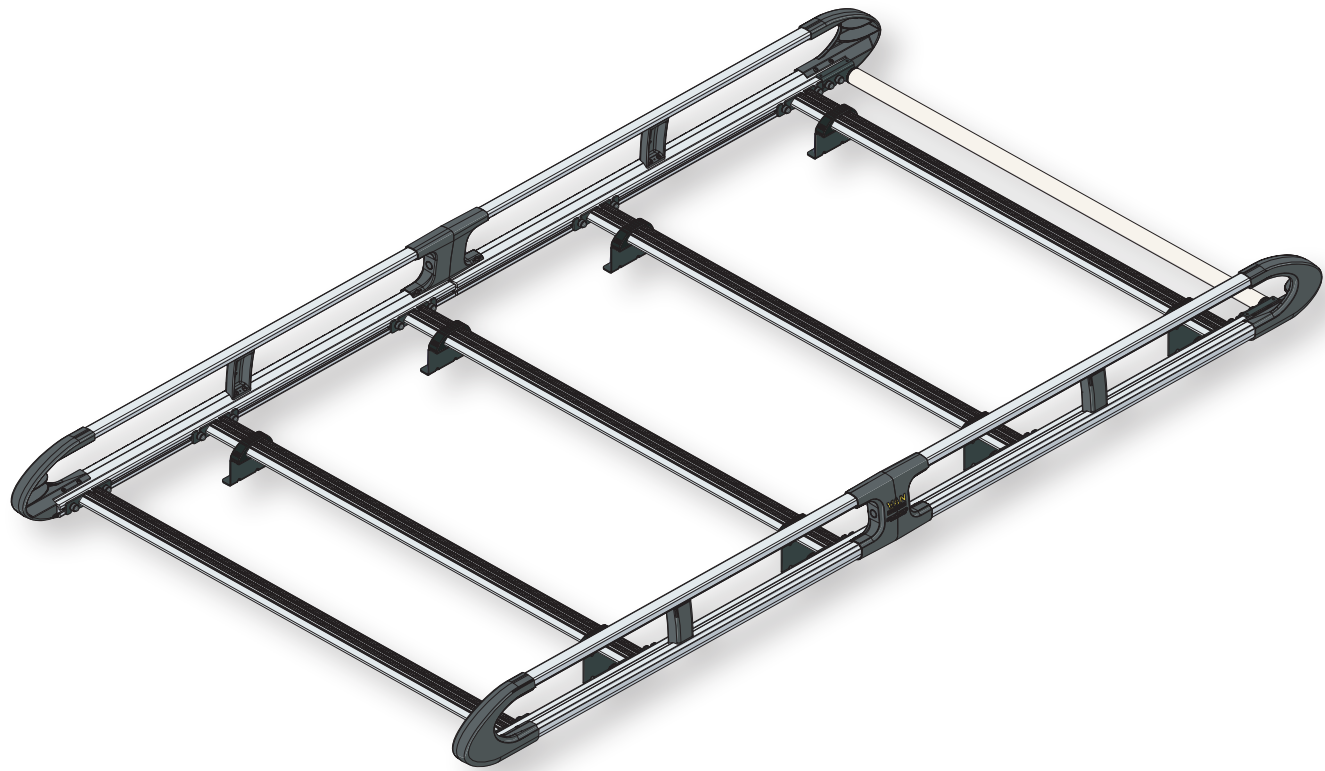


IN8501

ULTI Rack+



 Customercare@van-guard.co.uk
UK +44 (0) 1392 368 351



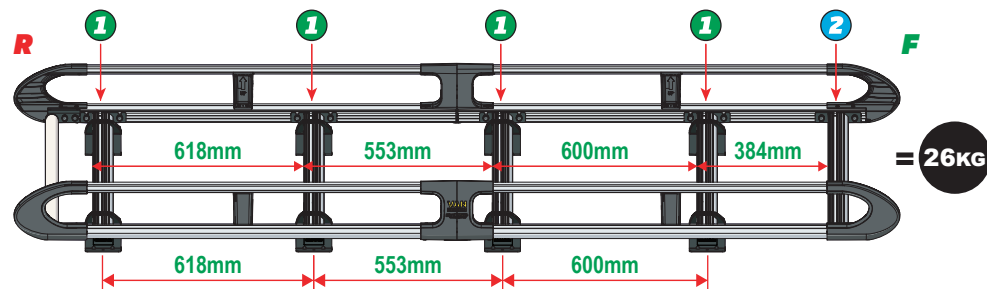
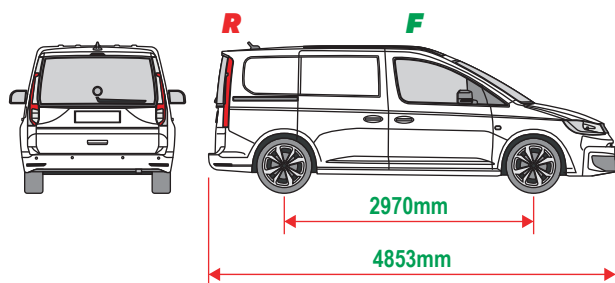
This FITTING INSTRUCTION is the property of VAN GUARD ACCESSORIES LTD. and must not be used for manufacturing purposes, copied nor communicated in any way to third parties without written permission from VAN GUARD ACCESSORIES LTD.
IN8501_A (CN:NR)

Van Guard Accessories Ltd
Fair Oak Close, Exeter Airport Business Park,
Exeter, Devon, EX5 2UL
www.van-guard.co.uk

THIS INSTRUCTION COVERS THE FOLLOWING MODELS - CHECK YOU ARE FITTING THE CORRECT MODEL BEFORE PROCEEDING

VGUR-319

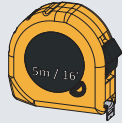
Volkswagen Caddy 5: 2021 on
Ford Transit Connect 2024 on
L2H1
Tailgate



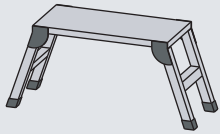
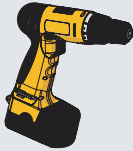
SUPPLIED COMPONENTS - CHECK ALL PARTS ARE PRESENT AND CORRECT BEFORE PROCEEDING (1 OF 2)

TOOLS REQUIRED

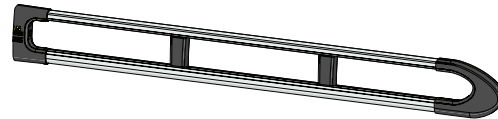
10MM X1



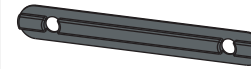
13MM X1



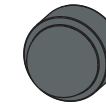
AS3535 X2
(2400 / A)



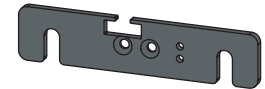
MA6118 X10



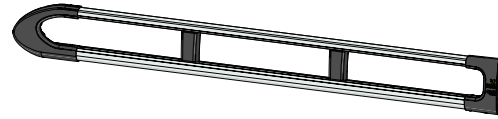
FX4241 X24



ME1622 X1



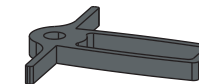
AS3534 X2
(2400 / B)



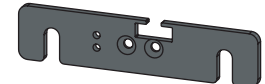
FX4008 X1



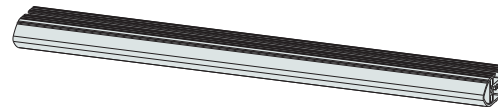
MA6145 X1



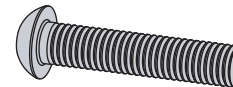
ME1623 X1



ME1626 X5
(1264mm)



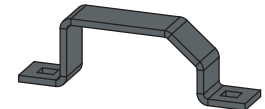
FX4001 X2
(M8X40)



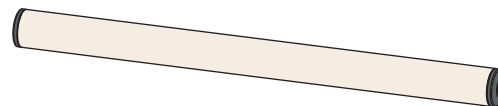
FX4235 X24
(M5X25)



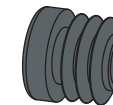
ME0203 X8



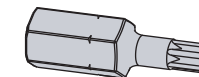
AS3158 X1
(1250mm)



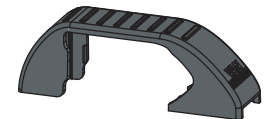
MA6007 X4



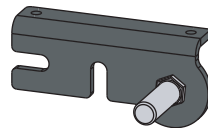
FX4248 X1
(T25)



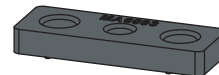
MA6065 X8



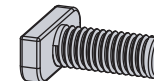
AS3590 X1



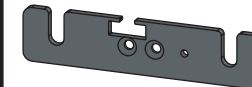
MA6093 X10



FX4239 X24
(M8X20)



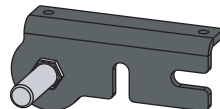
ME1620 X4



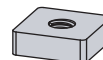
FX4016 X16
(M6)



AS3591 X1



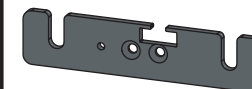
ME0316 X10



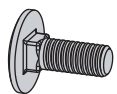
FX4240 X24
(M8)



ME1621 X4

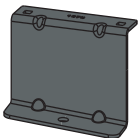


FX4042 X16
(M6X16)



SUPPLIED COMPONENTS - CHECK ALL PARTS ARE PRESENT AND CORRECT BEFORE PROCEEDING (2 OF 2)

ME1678 X1

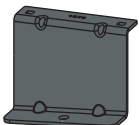


FX4019 X8

(M8)

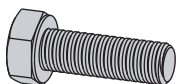


ME1679 X1

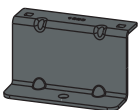


FX4028 X8

(M8X25)

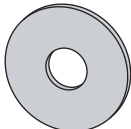


ME1680 X4

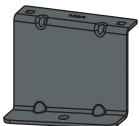


FX4040 X8

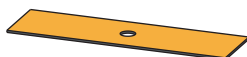
(M8)



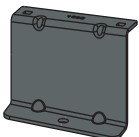
ME1681 X1



MA6018 X8



ME1682 X1

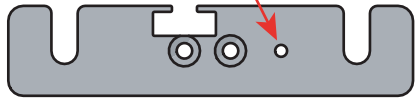


FX4014 X8



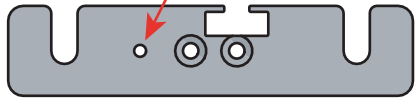
01

1L



X4

1R



X4

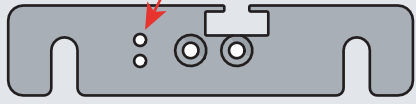


2L



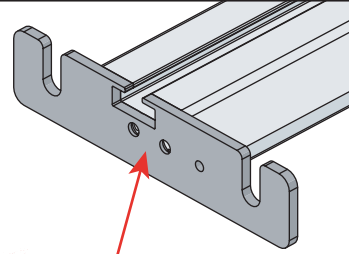
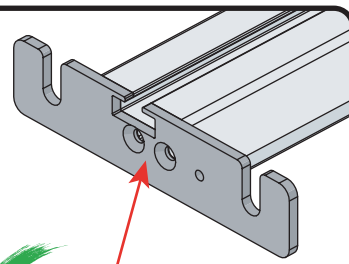
X1

2R



X1

02

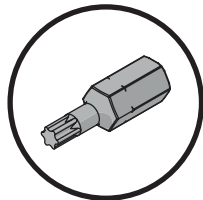


03

01

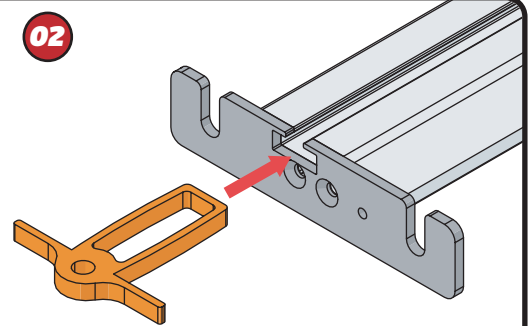


+



FX4248

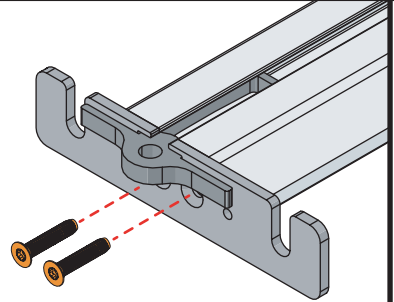
02



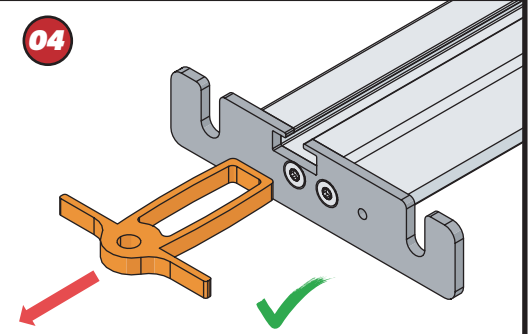
03



11Nm



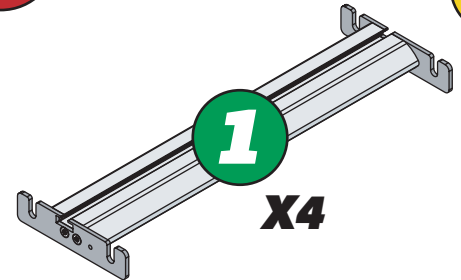
04



04

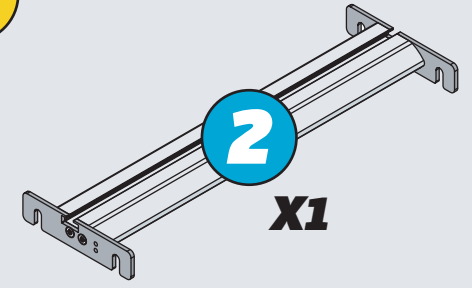


1

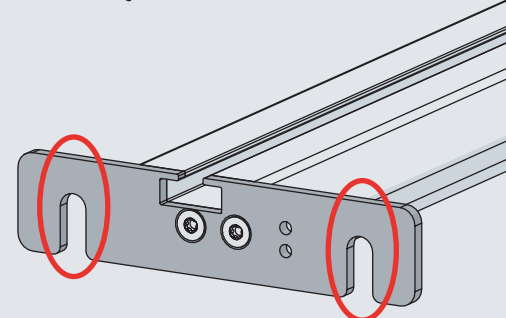
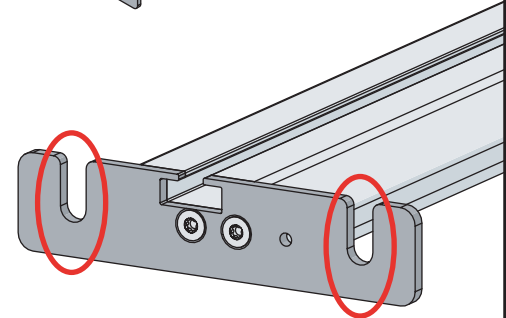


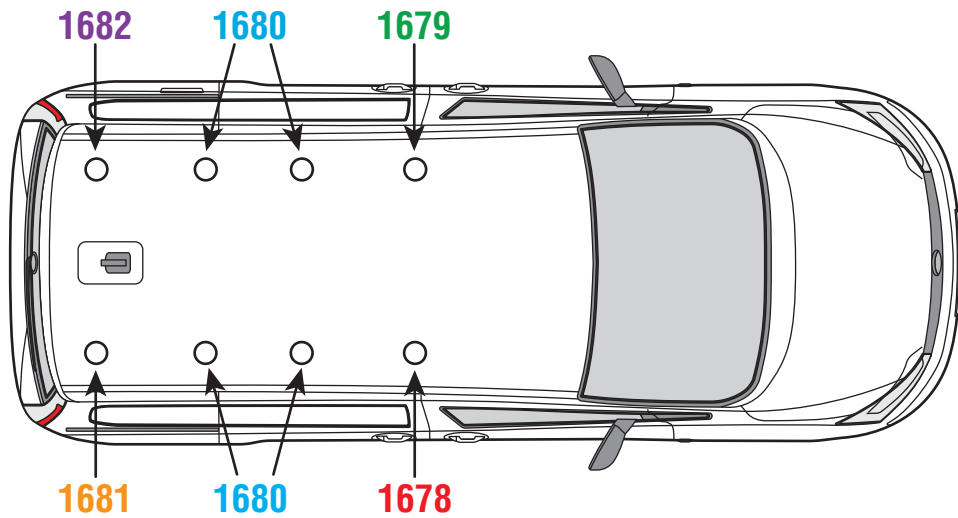
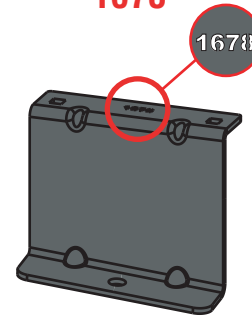
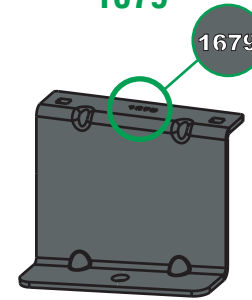
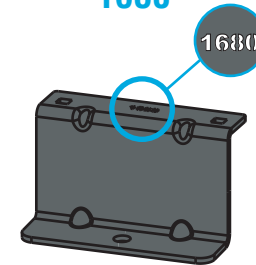
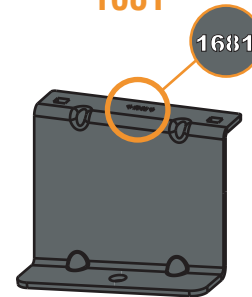
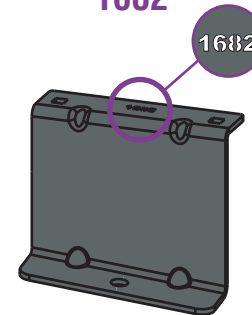
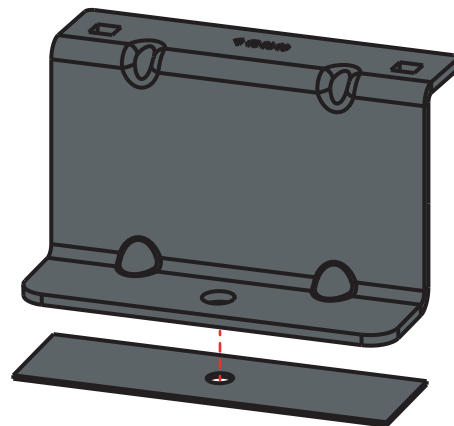
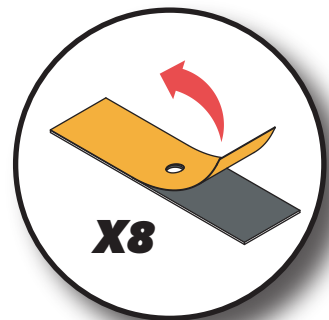
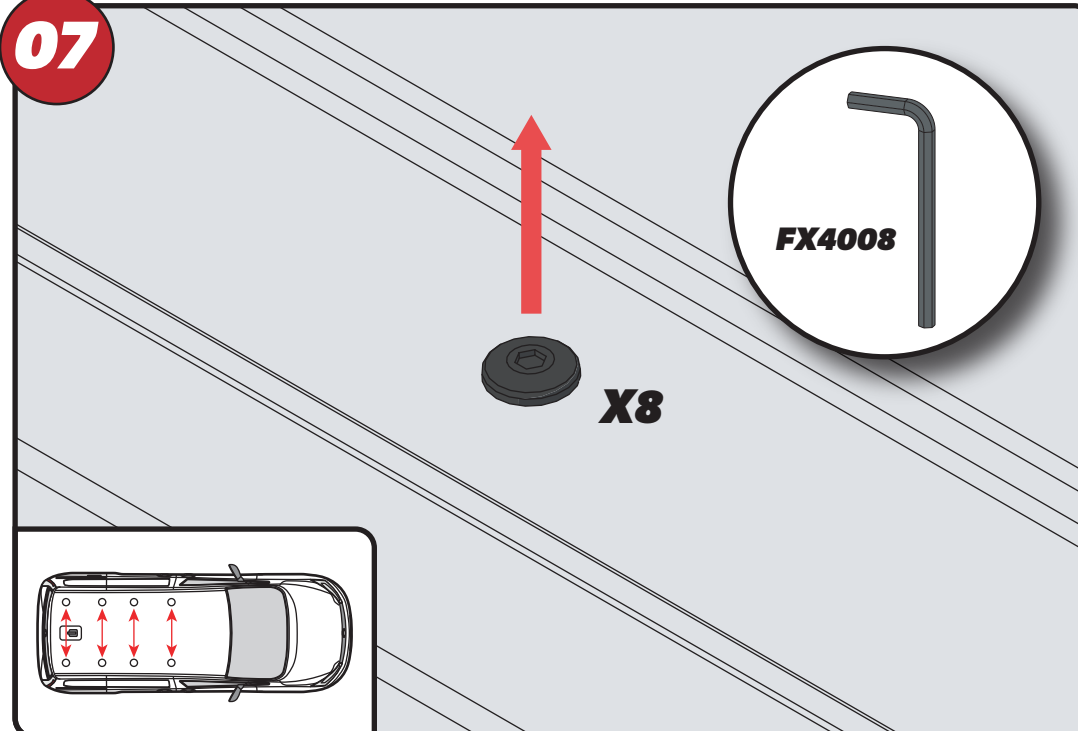
X4

2



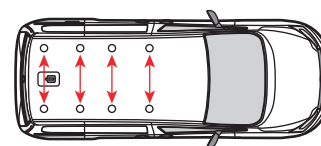
X1

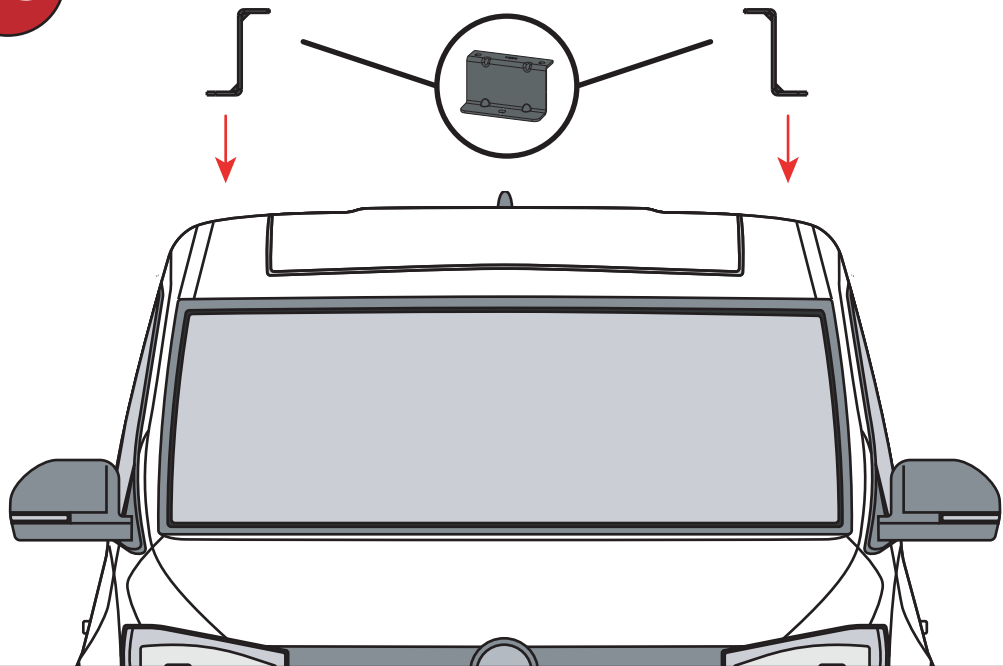
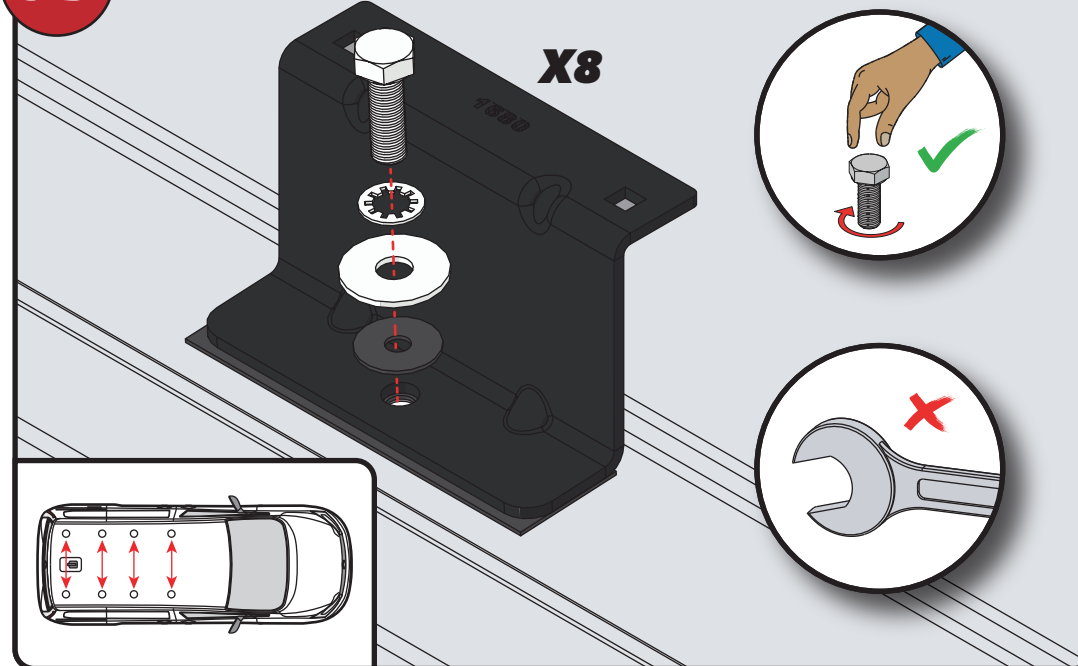
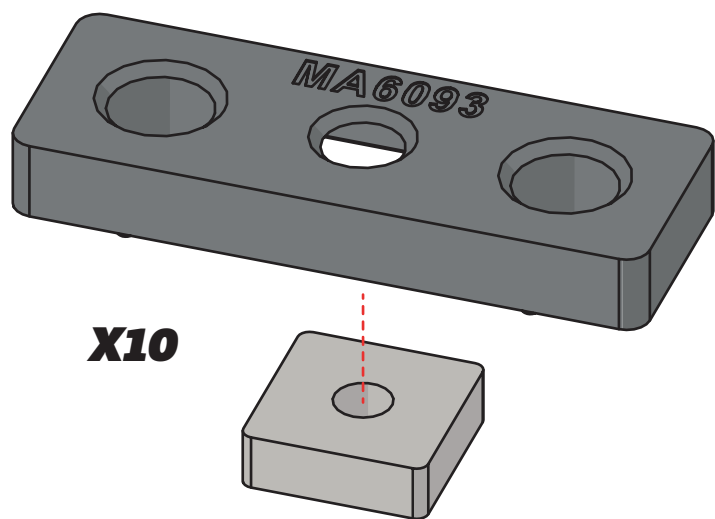
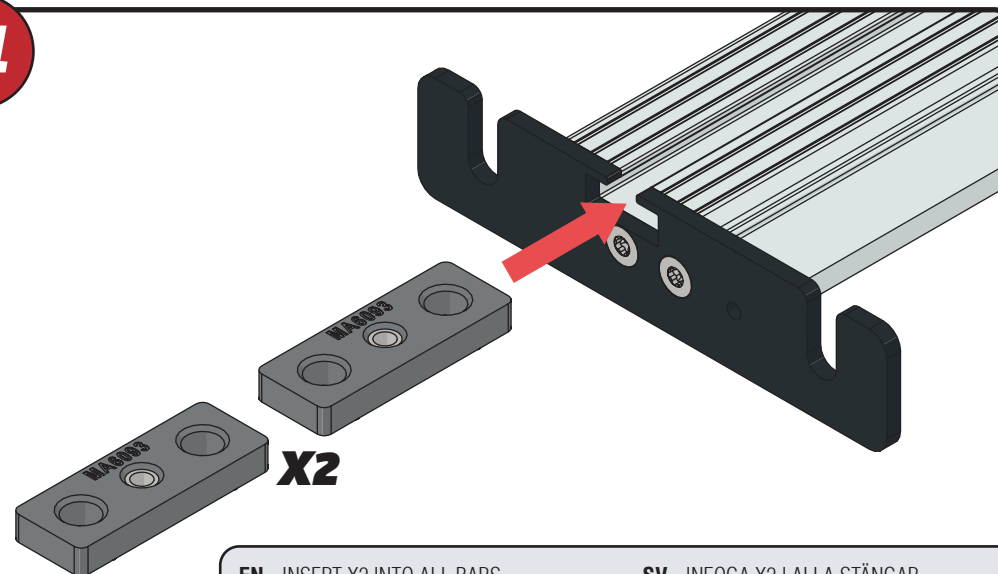


05**1678****1679****1680****1681****1682****06****07**

EN - STICK GASKETS TO ALL BRACKETS
 DE - KLEBEN SIE DIE DICHTUNG AN ALLEN HALTERUNGEN
 FR - COUSSINETS ADHÉSIFS À TOUS LES SUPPORTS
 NL - PLAK PAKKING OP ALLE BEUGELS
 ES - PEGA LAS ALMOHADILLAS A TODOS LOS SOPORTES
 IT - ADESIVI GUARNIZIONI A TUTTE LE STAFFE

SV - FÄST GUMMI PÅ ALLA FÄSTEN
 DA - KLÆB GUMMI PÅ ALLE BESLAG
 NO - PLIST GUMMI PÅ ALLE BRAKKETER
 PL - NAKLEJ USZCZELKI DO WSZYSTKICH WSPORNIKÓW
 CS - PŘILEPTE TĚSNĚNÍ NA VŠECHNY DRŽÁKY

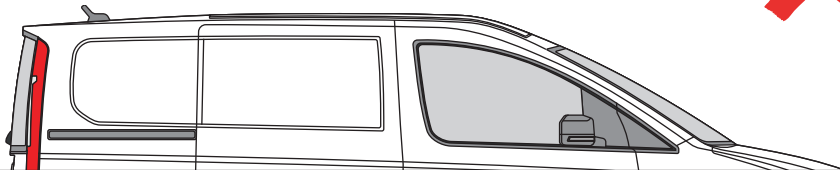
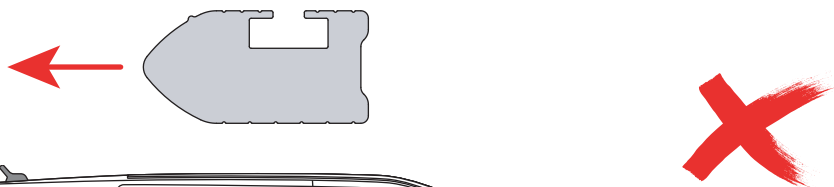
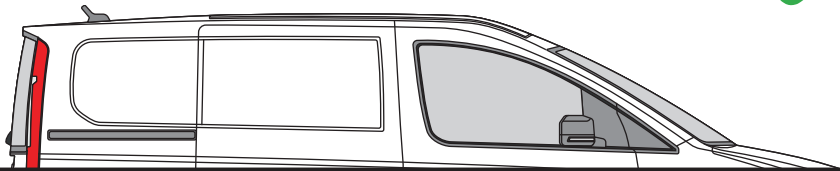
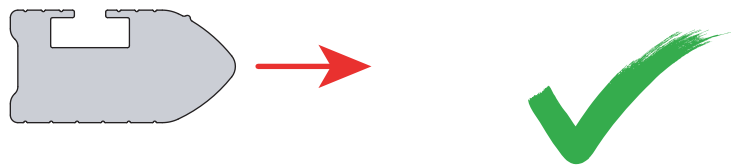


08**09****10****11**

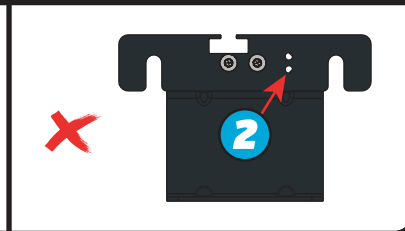
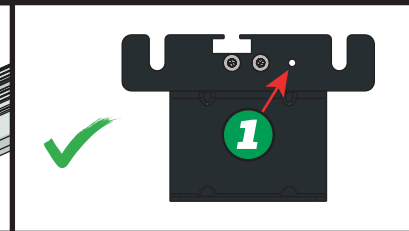
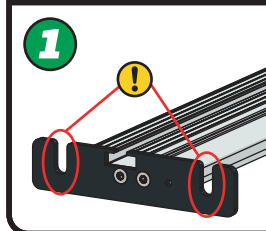
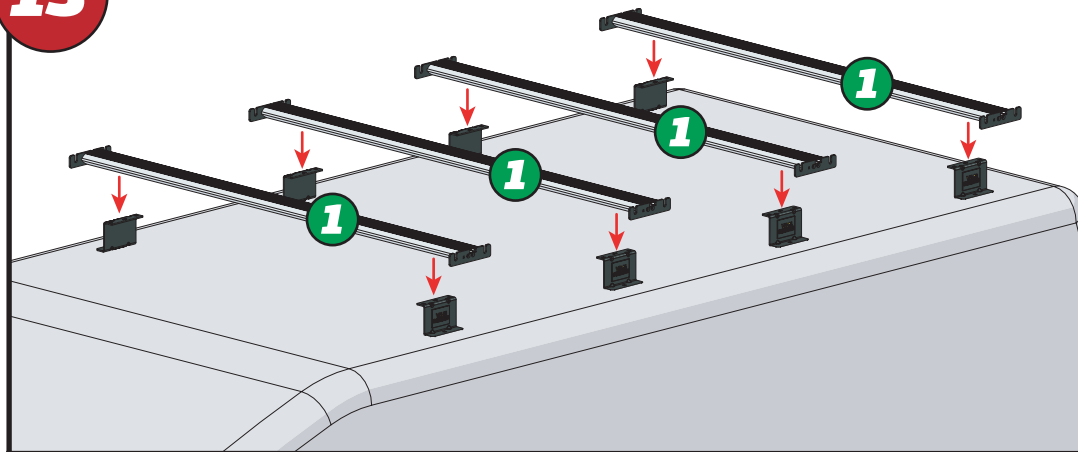
EN - INSERT X2 INTO ALL BARS
 DE - X2 IN ALLE STANGEN EINFÜGEN
 FR - INSÉRER X2 DANS TOUTES LES BARRES
 NL - PLAATS X2 IN ALLE BARS
 ES - INSERTAR X2 EN TODAS LAS BARRAS
 IT - INSERIRE X2 IN TUTTE LE BARRE

SV - INFOGA X2 I ALLA STÄNGAR
 DA - INDSÆT X2 I ALLE STÆNGER
 NO - SETT X2 INN I ALLE TAKSTENGER
 PL - WSTAW X2 DO WSZYSTKICH PRĘTÓW
 CS - VLOŽTE X2 DO VŠECH TYČÍ

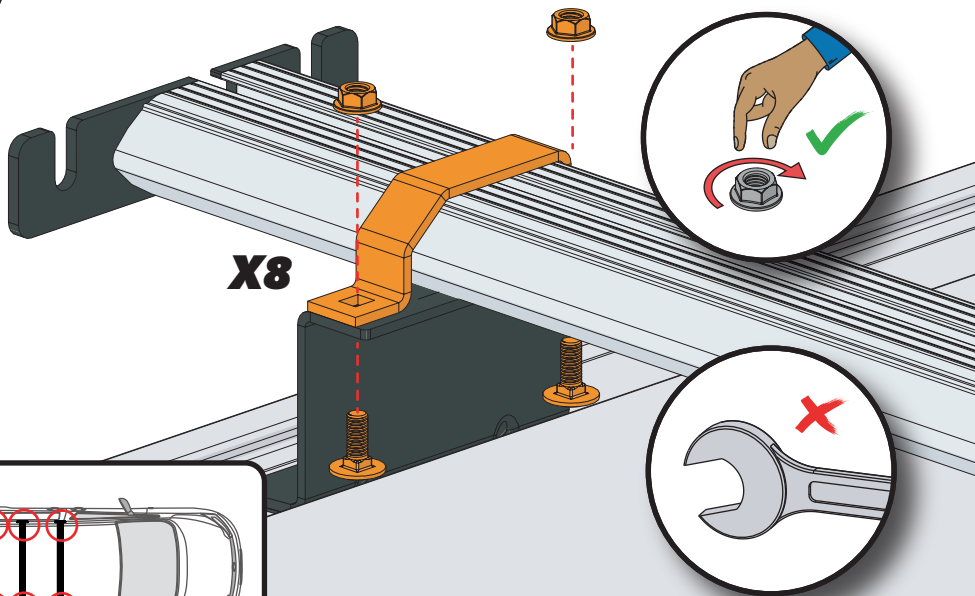
12



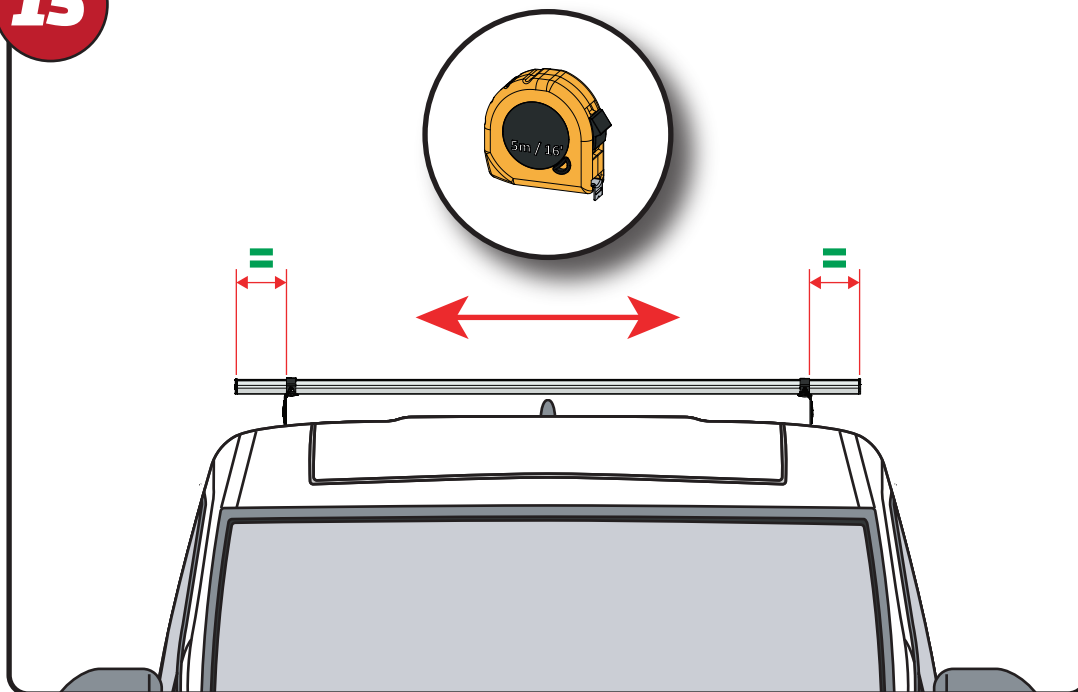
13



14



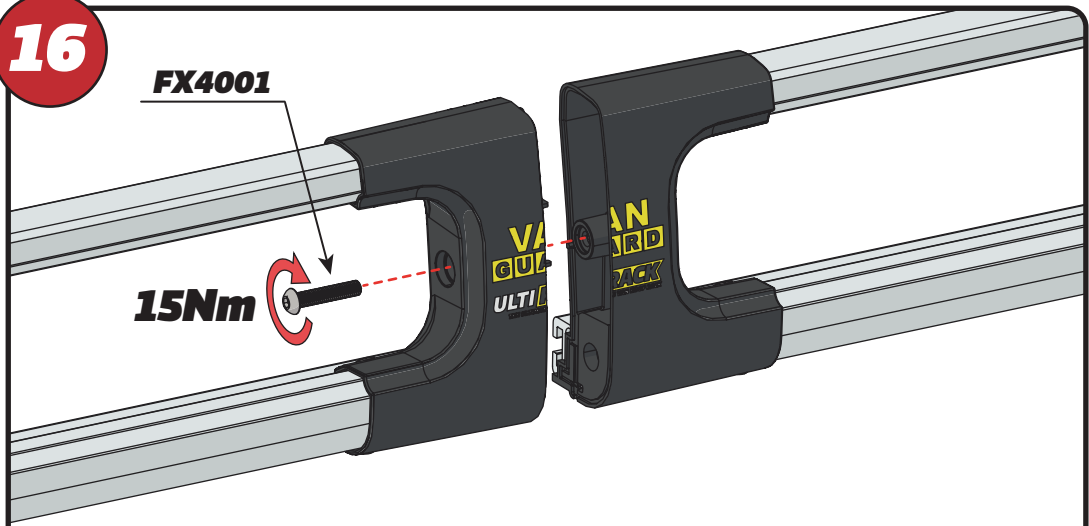
15



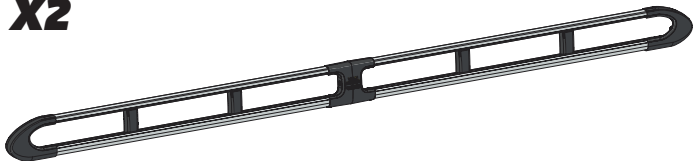
16

FX4001

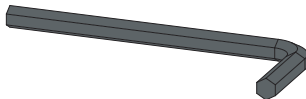
15Nm



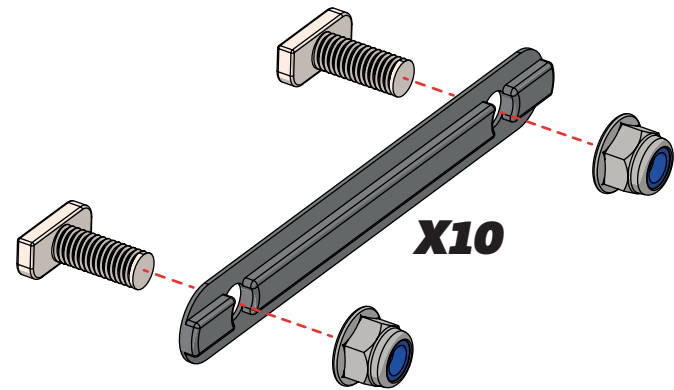
X2



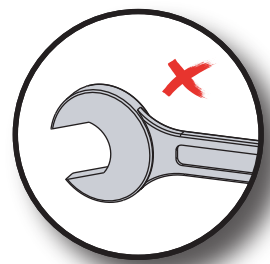
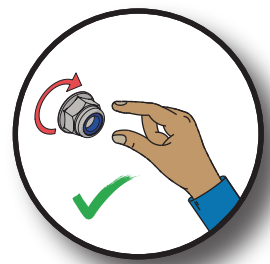
FX4008



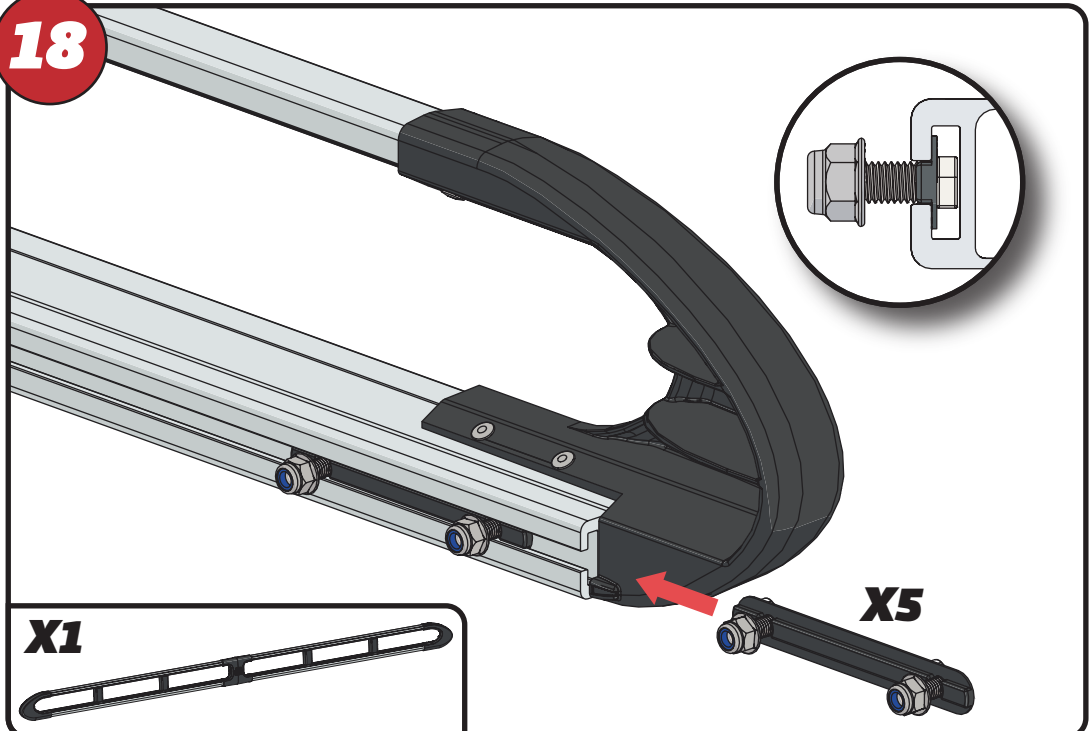
17



X10



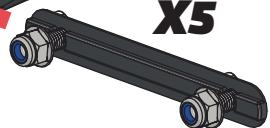
18



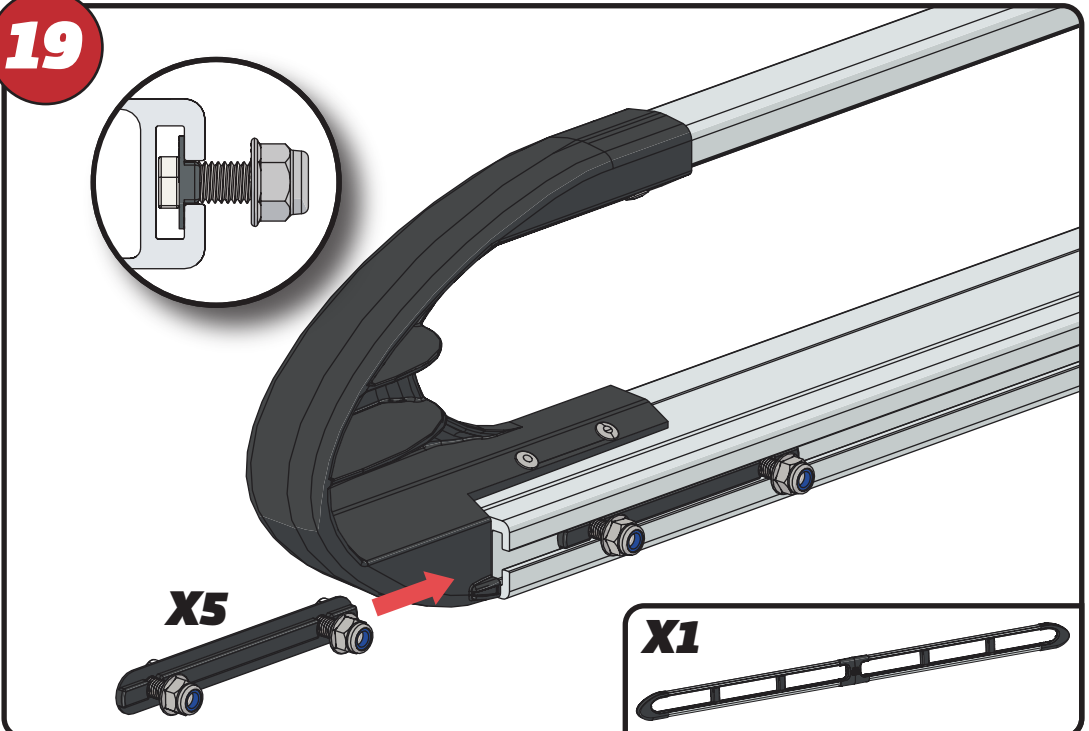
X1



X5



19



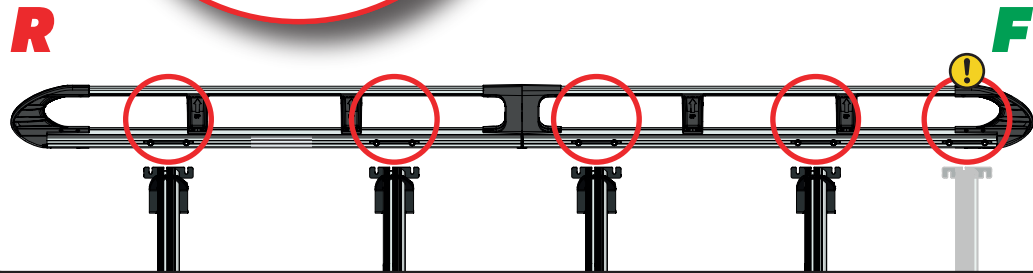
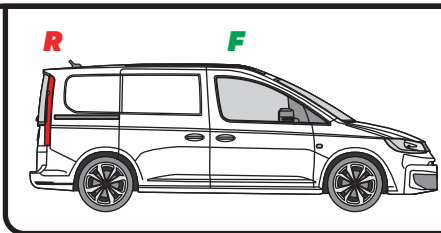
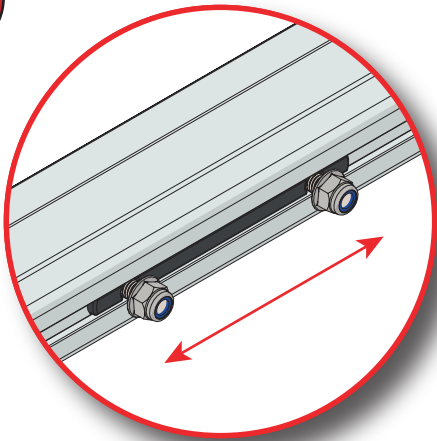
X5



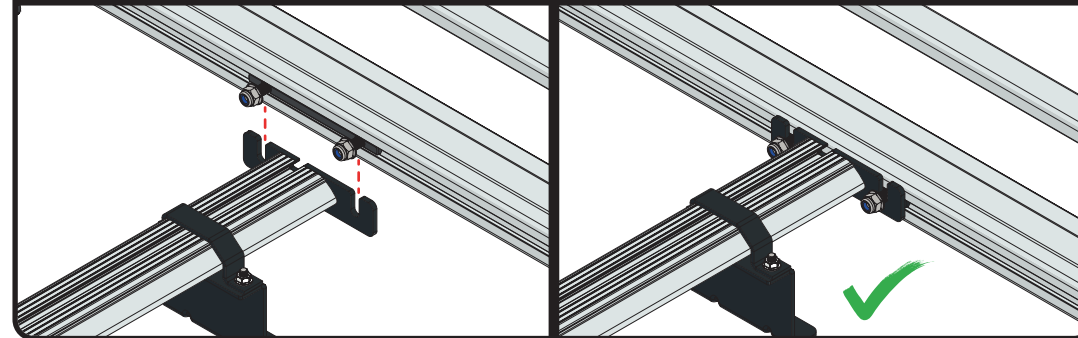
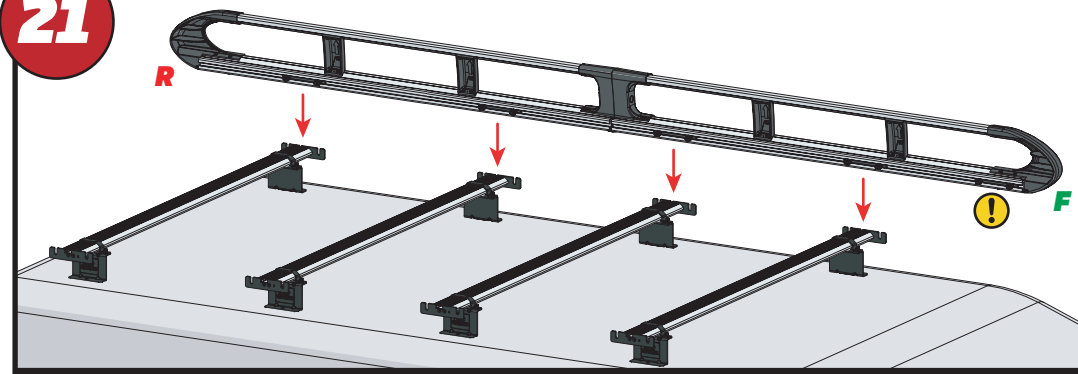
X1



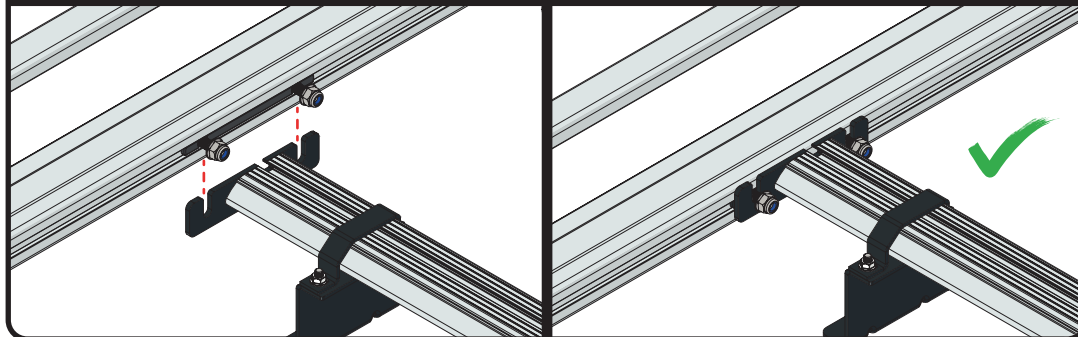
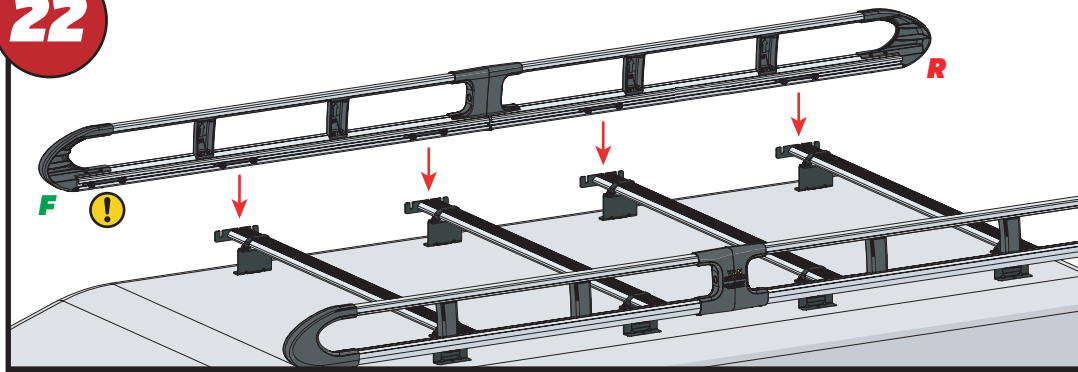
20



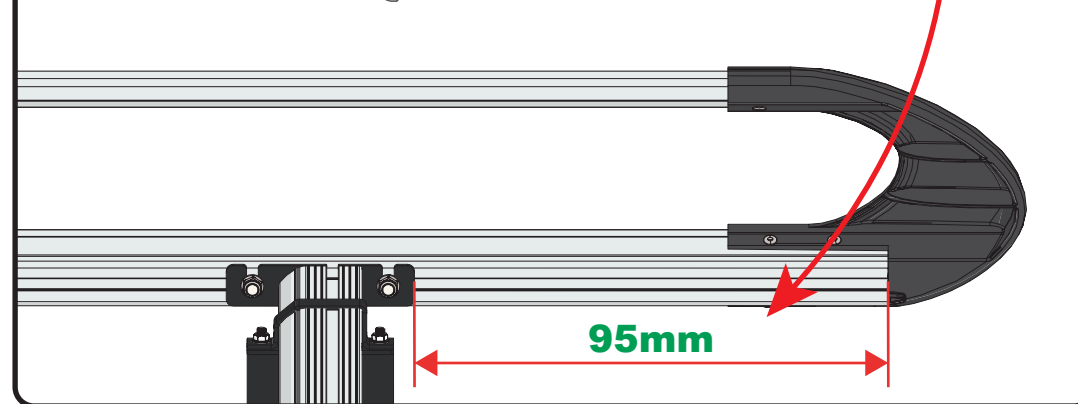
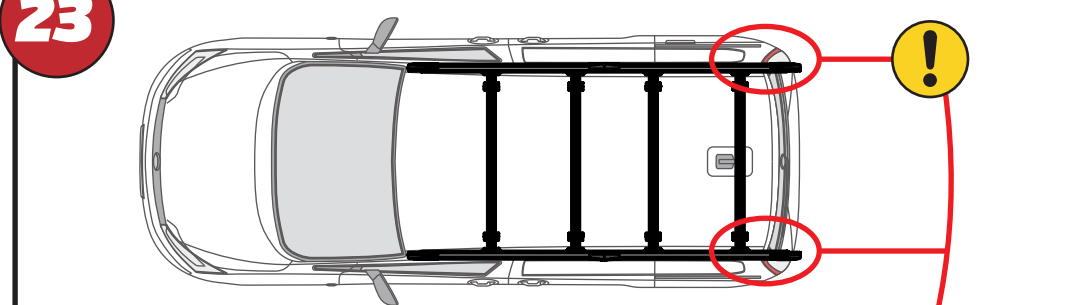
21

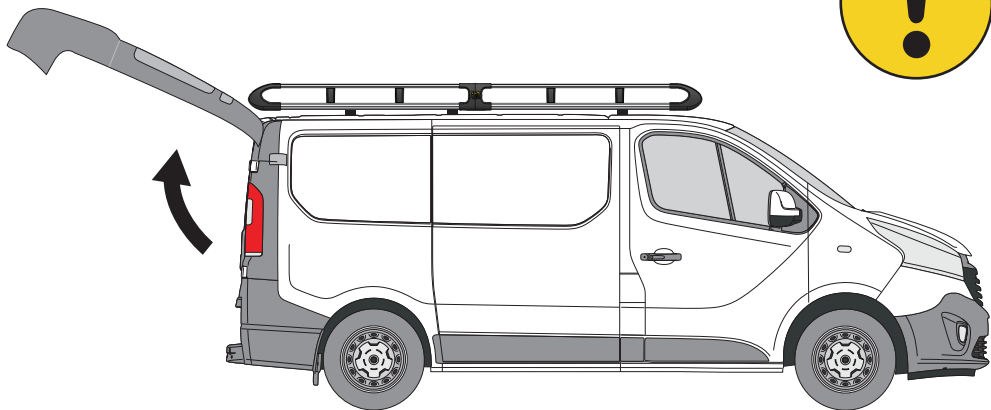


22



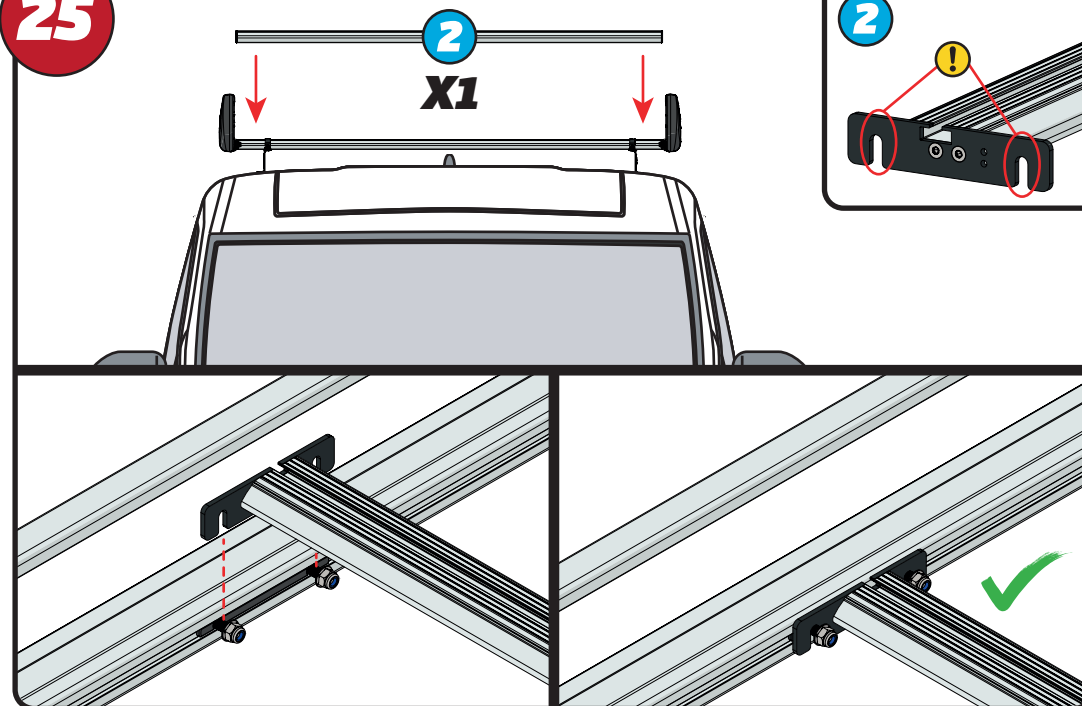
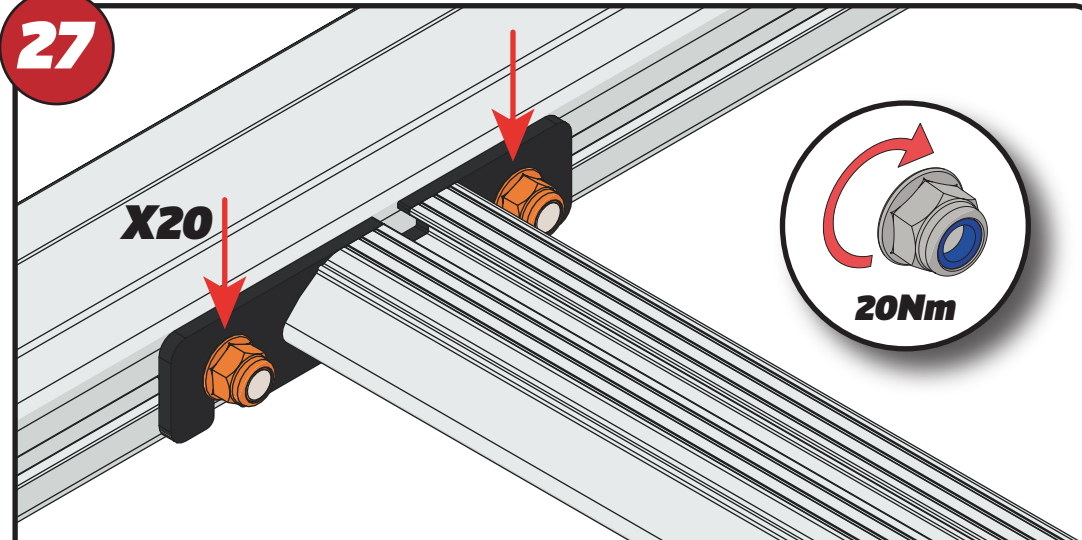
23



24

EN - CHECK TO ENSURE CLEARANCE FROM TAILGATE
 DE - ÜBERPRÜFEN SIE DEN ABSTAND ZUR HECKKLAPPE
 FR - VÉRIFIEZ LE DÉGAGEMENT PAR RAPPORT AU HAYON
 NL - CONTROLEER OP VRIJHEID VAN DE ACHTERKLEP
 ES - VERIFIQUE EL ESPACIO LIBRE CON LA PUERTA TRASERA
 IT - CONTROLLARE LA DISTANZA DALLA PORTELLONE

SV - KONTROLLERA AVSTÅND TILL BAKLUCKAN
 DA - KONTROLLER AFSTAND TIL BAGKLAPPEN
 NO - KONTROLLER KLARERING FRA BAKLUKE
 PL - SPRAWDŹ PRZEŚWIT OD TYLNEJ KLAPY
 CS - ZKONTROLUJTE VZDÁLENOST OD ZADNÍCH DVEŘÍ

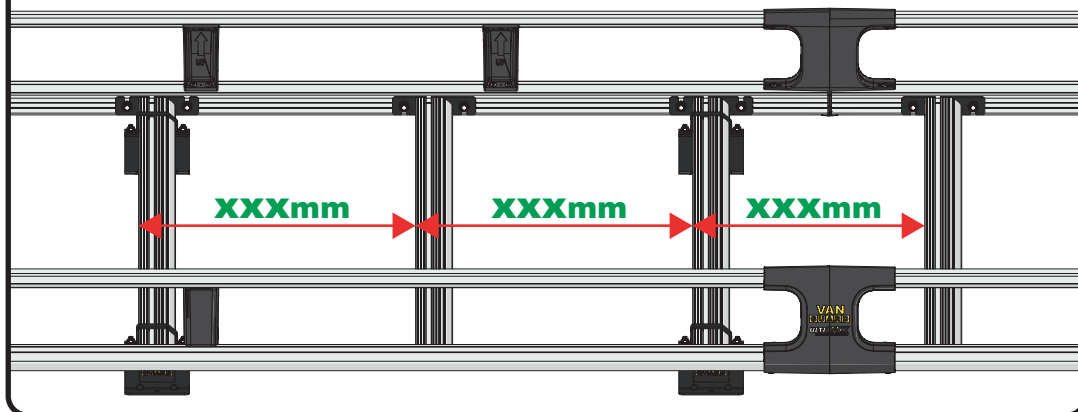
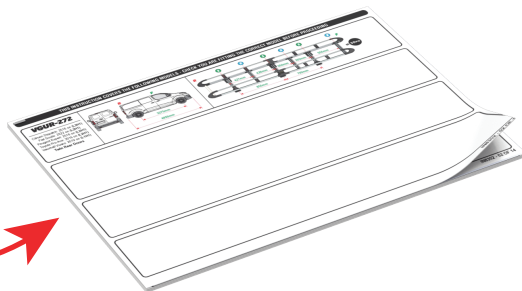
25**27**

EN - TIGHTEN ALL OF THE CROSS BARS
 DE - ALLE QUERSTANGEN FESTZIEHEN
 FR - SERREZ TOUTES LES BARRES TRANSVERSALES
 NL - DRAAI ALLE DWARSBALK VAN HET DAK AAN
 ES - APRIETE TODAS LAS BARRAS TRANSVERSALES
 IT - STRINGERE TUTTE LE BARRE TRASVERSALI

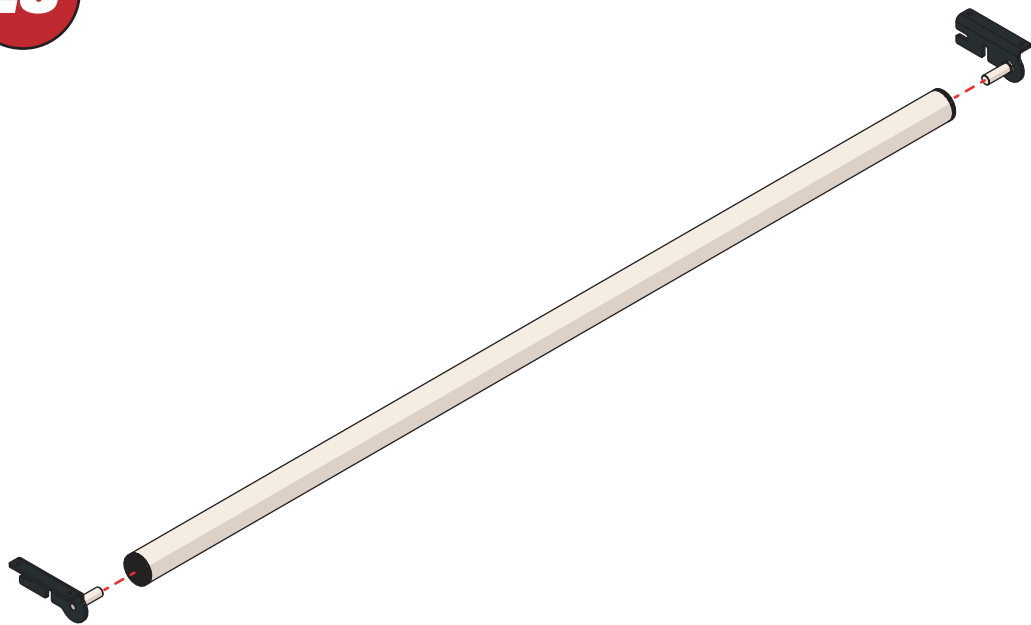
SV - SKRU UPP ALLA KORSSTANGAR
 DA - SKRU ALLE TAGBØJLER OP
 NO - SKRU OPP ALLE TVERRSTENGER
 PL - DOKRĘCIĆ WSZYSTKIE POPRZECZKI
 CS - VŠECHNY PŘÍČNÉ TYČE SEŠROUJTE

26

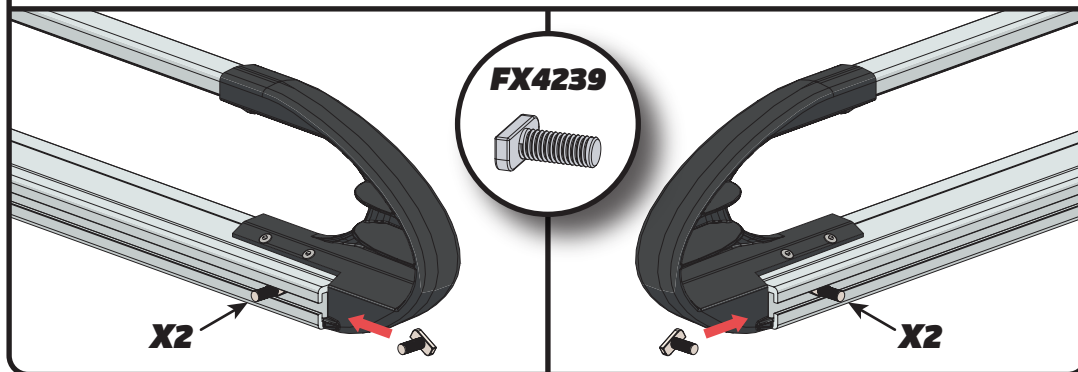
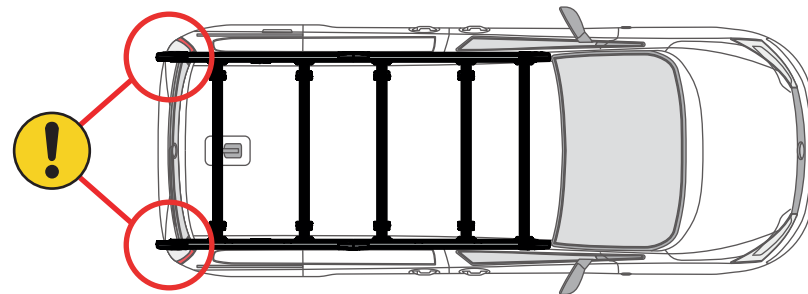
XXX =
 PAGE 2 OF 14



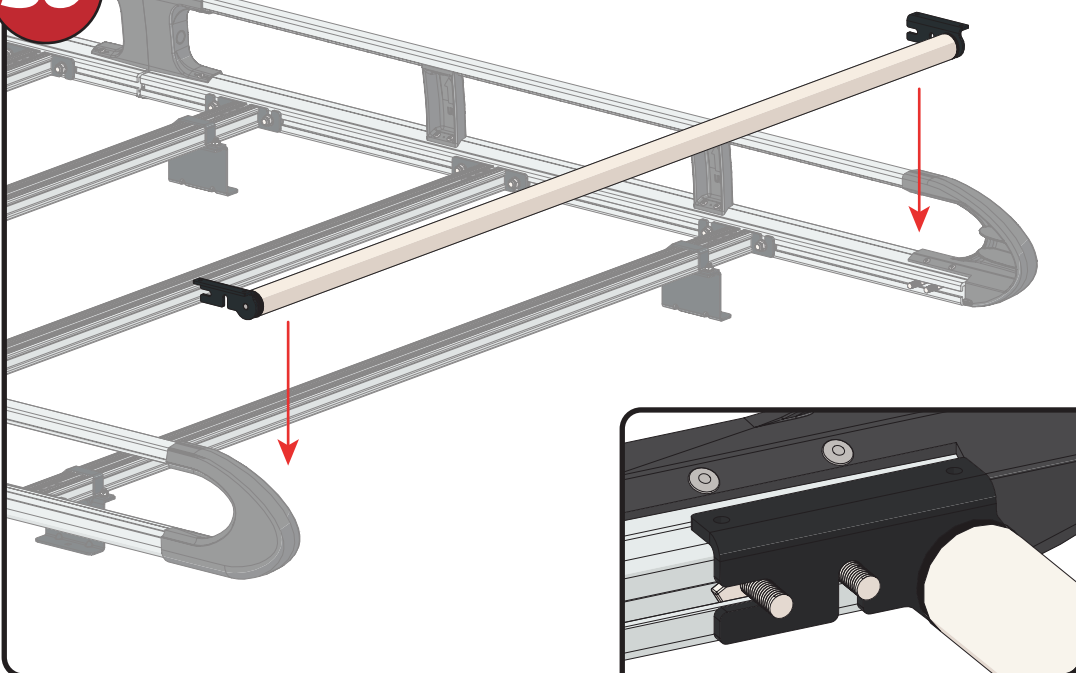
28



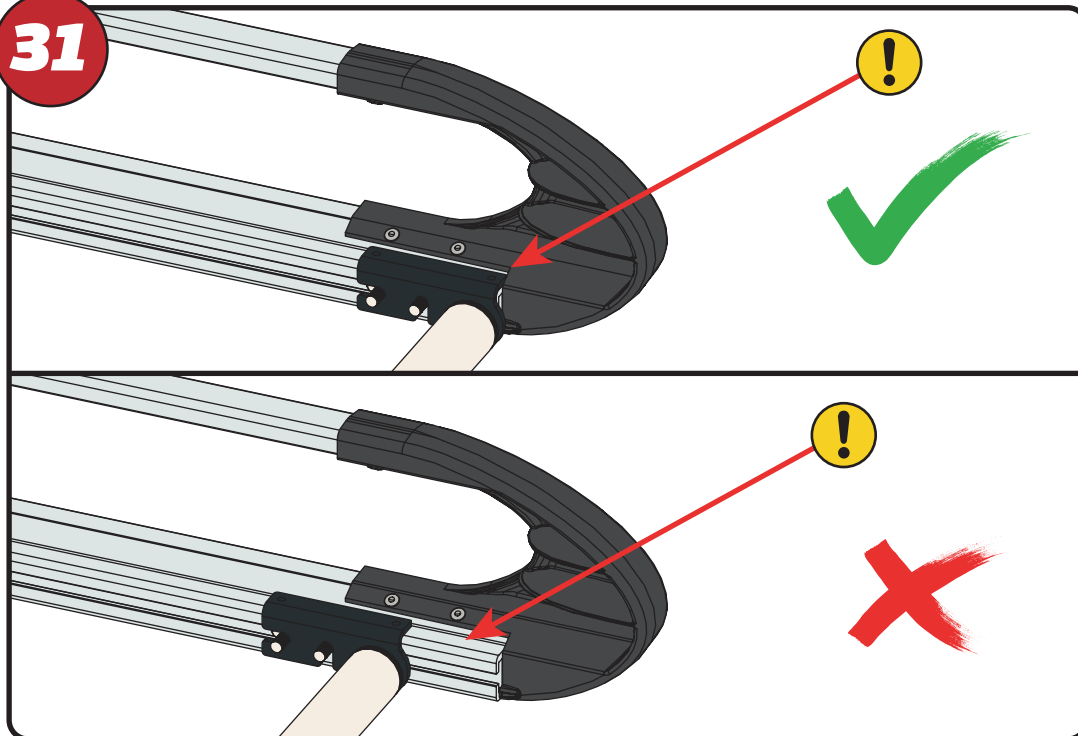
29



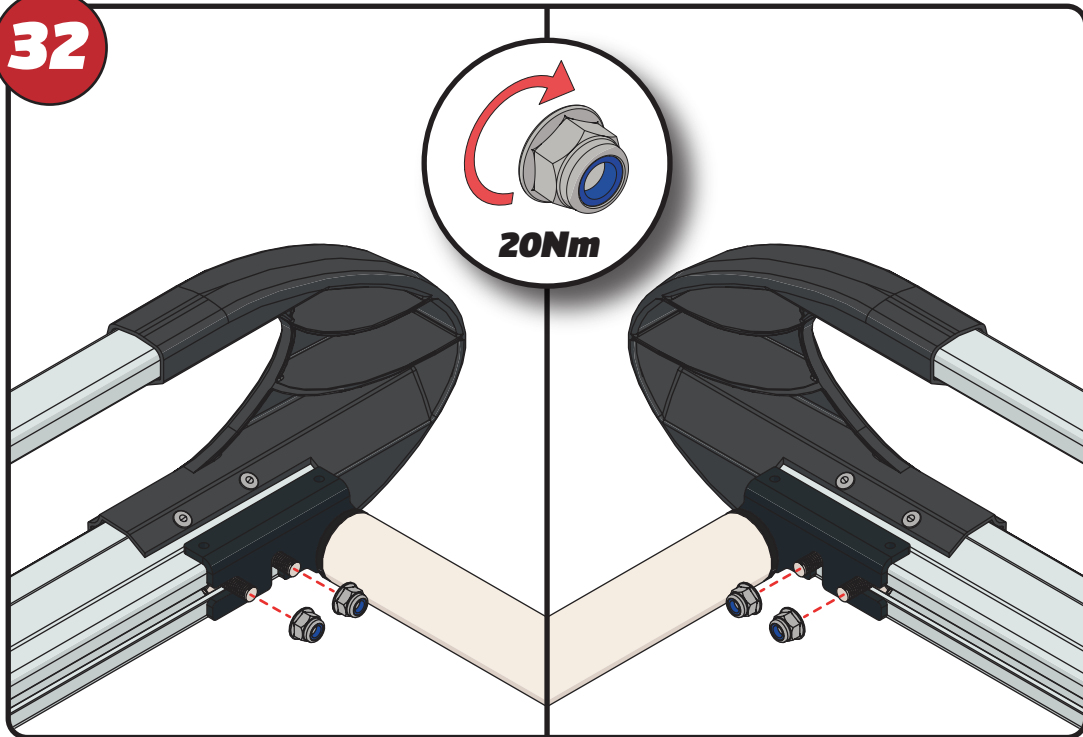
30



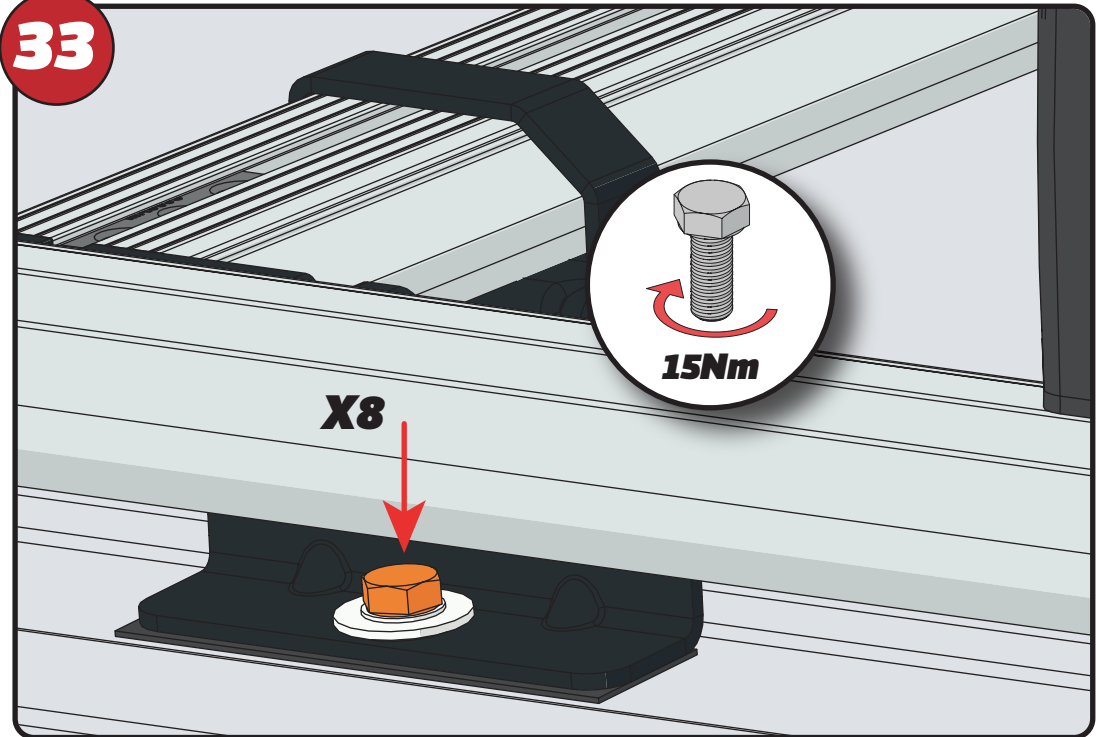
31



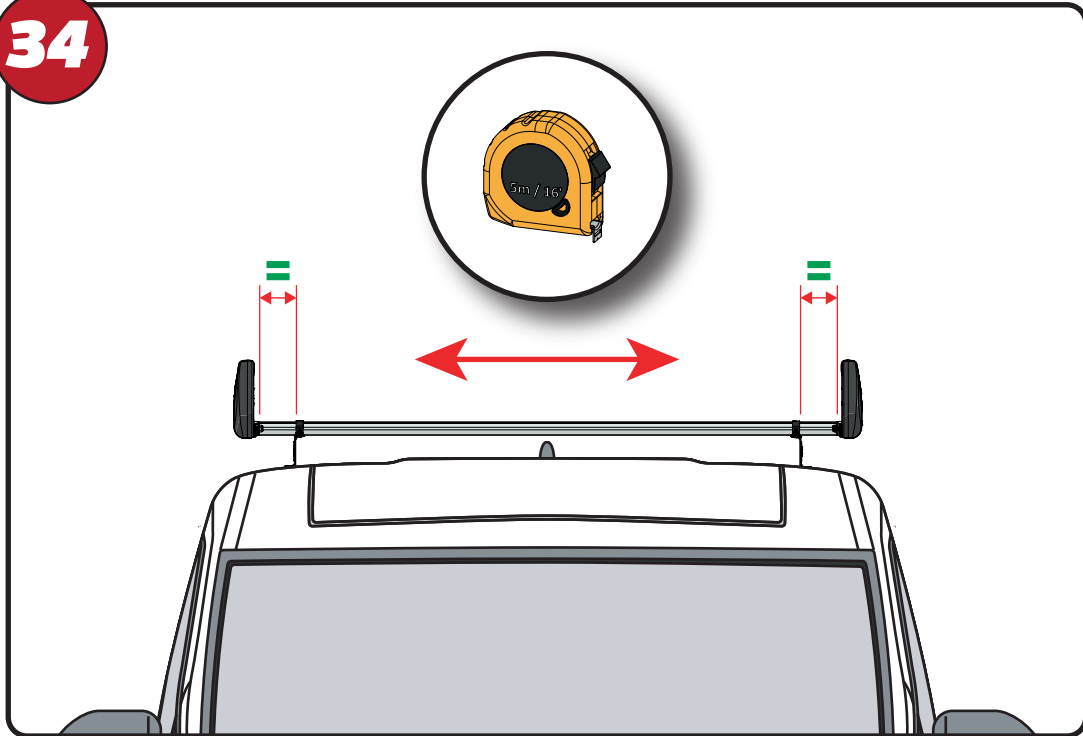
32



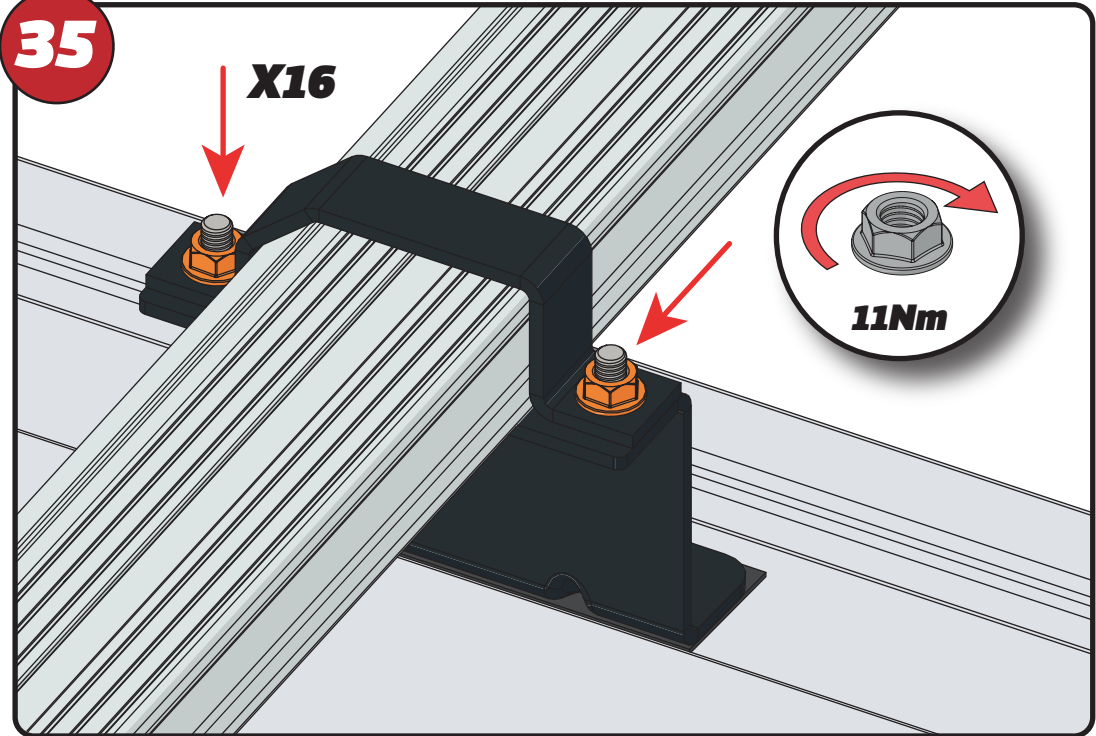
33



34



35

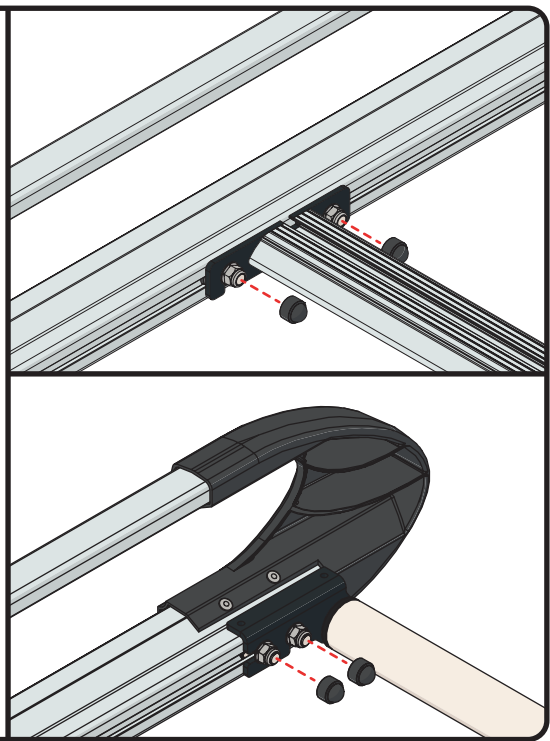


36



FX4241

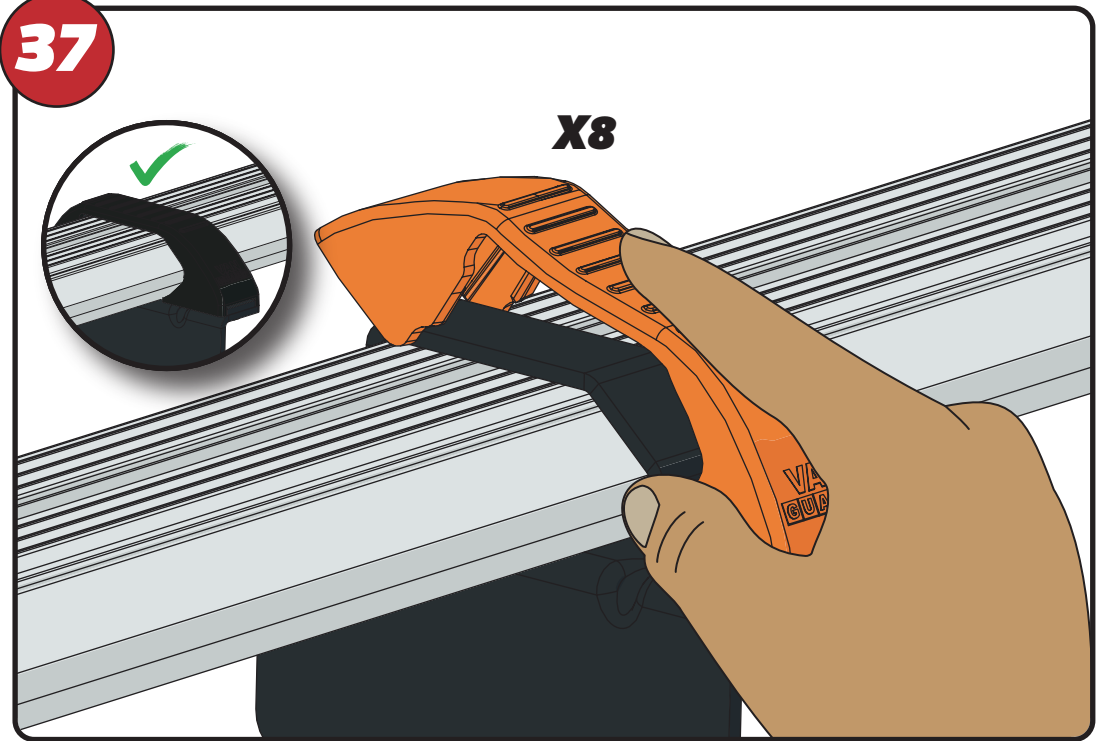
X24



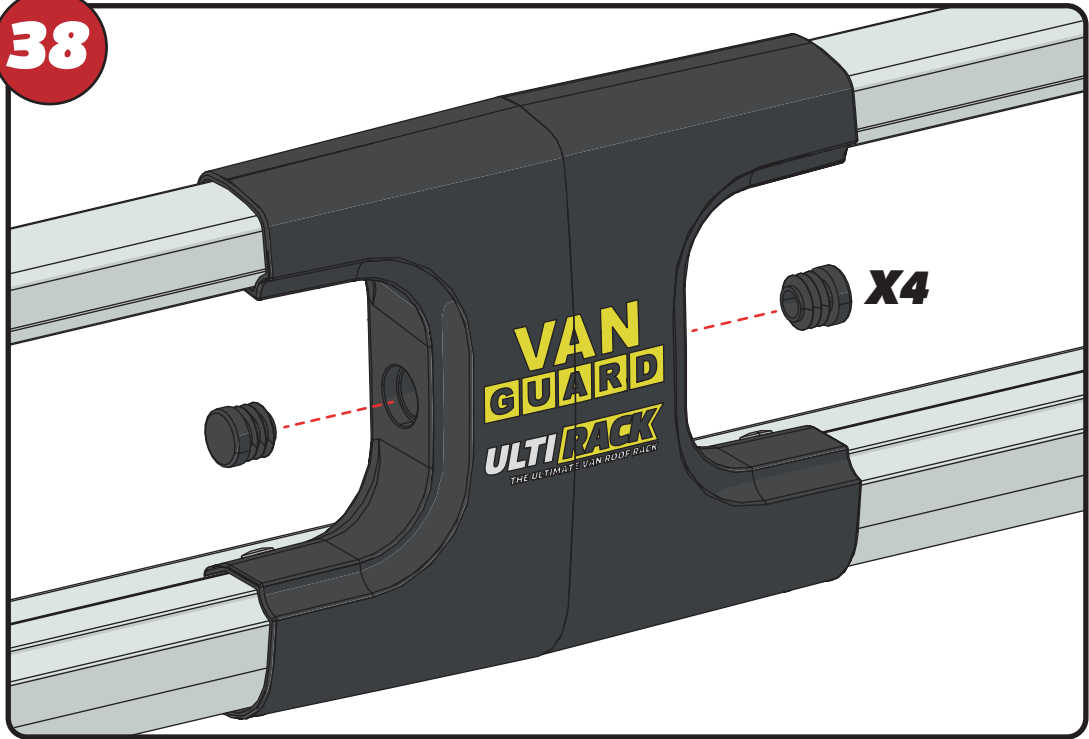
37



X8



38



VAN GUARD
ULTIRACK
THE ULTIMATE VAN ROOF RACK

X4

39

