

IN9179

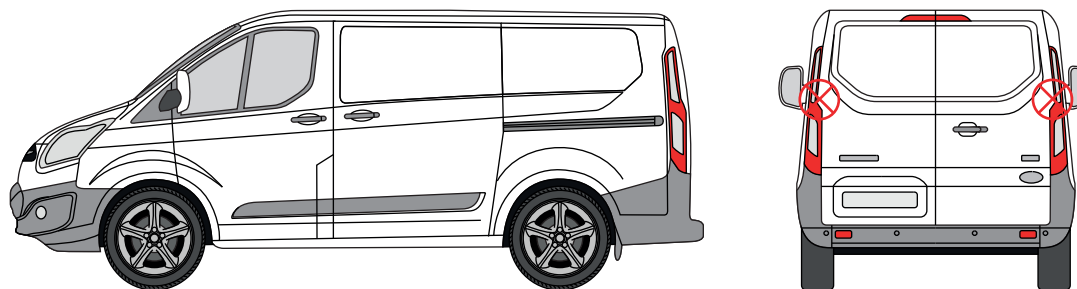
Loom Guard - Twin Rear Doors

THANK YOU FOR PURCHASING A VAN GUARD LOOM GUARD

SUITS THE FOLLOWING MODELS

Vehicle:
Ford Transit Custom 2013-2023

Door:
Rear - Twin



⊗ Indicates approximate placement of guard



CAUTION

PLEASE TAKE THE TIME TO READ THROUGH THE IMPORTANT INFORMATION BELOW BEFORE PROCEEDING TO FIT THIS PRODUCT



FAILURE TO TAKE NOTICE OF THE FOLLOWING INFORMATION MAY RESULT IN DAMAGE TO THE VEHICLE.



Important: Follow the instructions and all measurements carefully. Double check measurements before making any cuts. Drawings are for guidance only. Every effort has been made to ensure the accuracy of the instructions provided however Van Guard Accessories Ltd accepts no liability for any inaccuracies of either the drawings provided or vehicle variations. All bare metal should be treated with a manufacturer approved anti-corrosion compound and no liability is accepted for any incorrect installation or corrosion to body panels or within cavities. It is the sole responsibility of the installer to ensure the suitability of both the vehicle and of the supplied parts before installation is started. No liability is accepted for the fitting of the products.

This FITTING INSTRUCTION is the property of VAN GUARD ACCESSORIES LTD. and must not be used for manufacturing purposes, copied nor communicated in any way to third parties without written permission from VAN GUARD ACCESSORIES LTD.
IN9179_A

Van Guard Accessories Ltd
Fair Oak Close, Exeter Airport Business Park,
Exeter, Devon, EX5 2UL
www.van-guard.co.uk

SUPPLIED COMPONENTS

AS3448 X1

(RIGHT SIDE LOOM GUARD ASSEMBLY)



AS3449 X1

(LEFT SIDE LOOM GUARD ASSEMBLY)



ME3240 X2

(WASHER)



Wear the appropriate protective equipment (safety glasses & gloves) while fitting this product.



Dispose of packaging materials responsibly - Do not dispose until you have checked all parts and fixings are present.

ME3238 X1

(RIGHT SIDE LOOM GUARD PLATE)



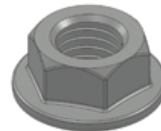
ME3239 X1

(LEFT SIDE LOOM GUARD PLATE)



FX4016 X4

(M6 FLANGE NUT)



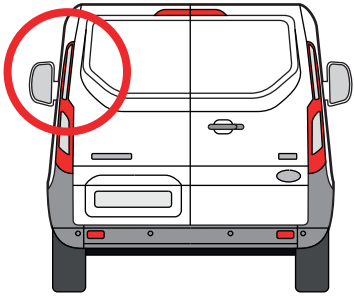
FITTED IMAGE



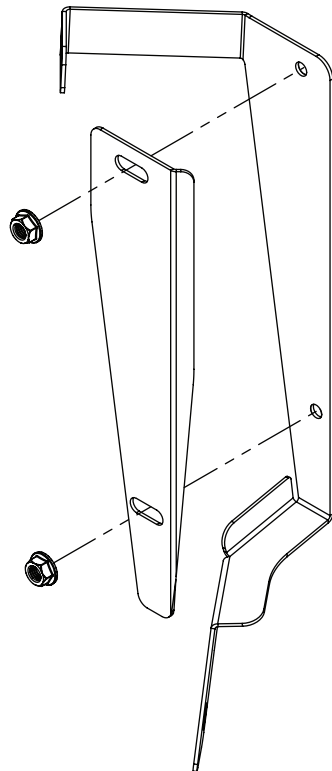
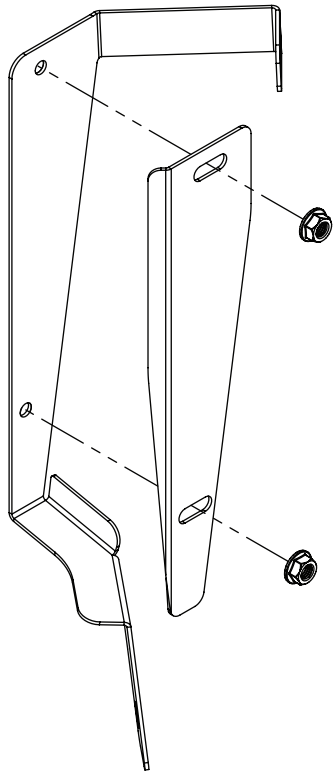
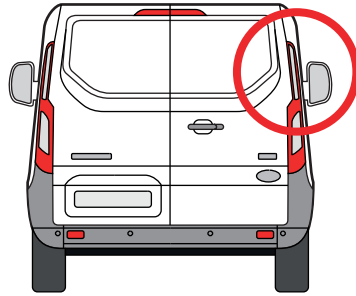
1. ASSEMBLE LOOM GUARDS

Loosely assemble the loom guards together using the supplied M6 flange nuts.

LEFT SIDE

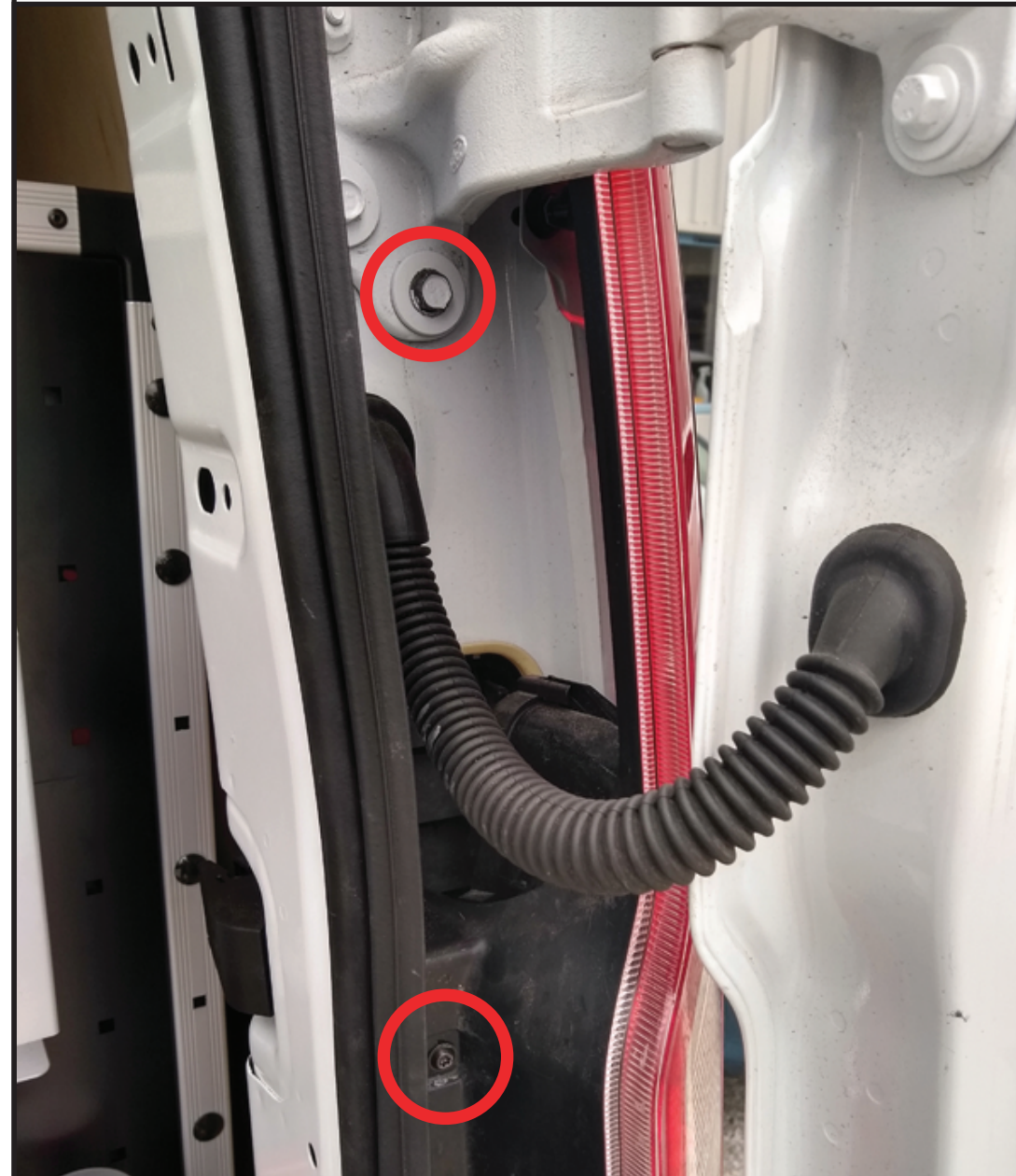


RIGHT SIDE



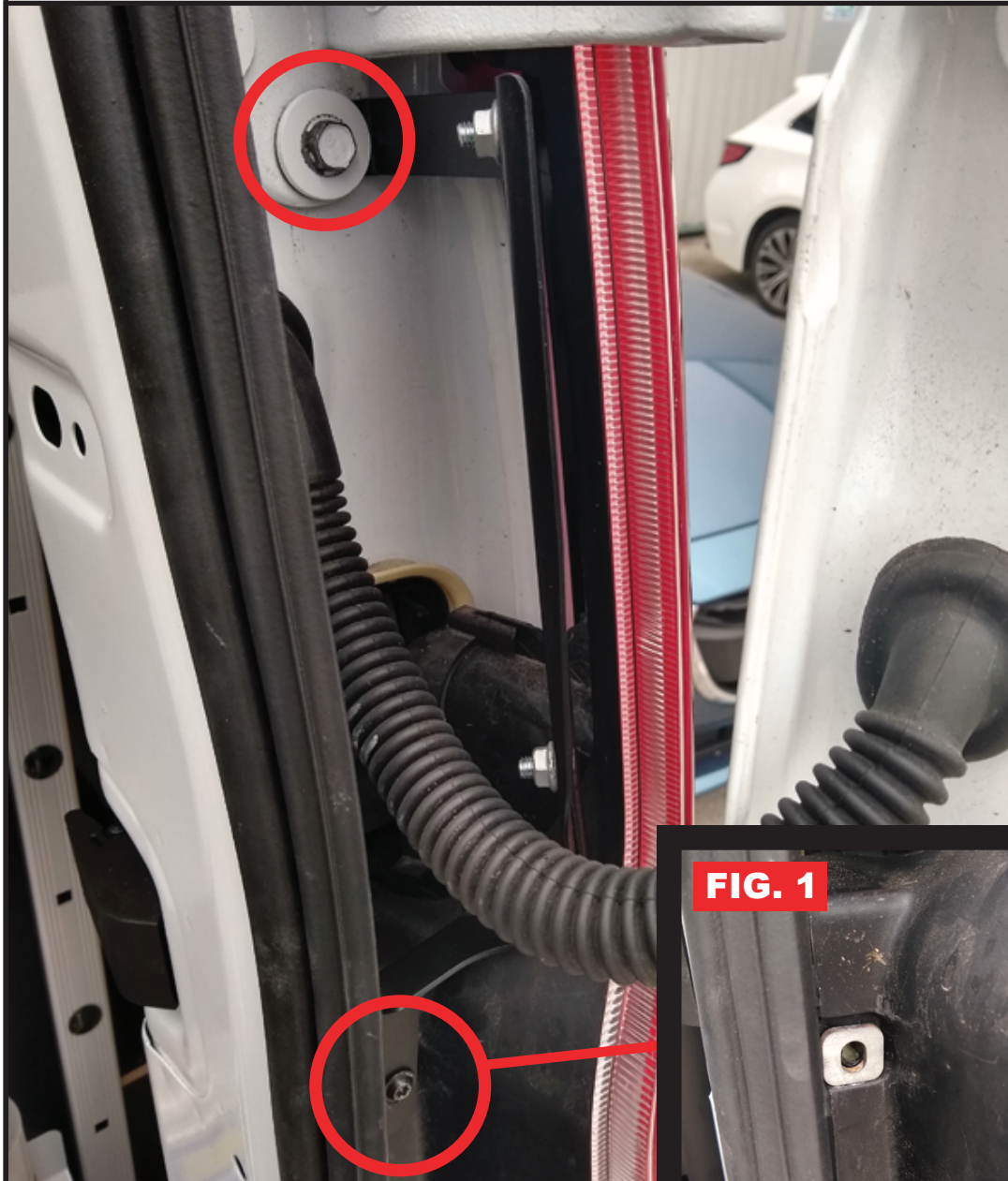
2. REMOVE VEHICLES EXISTING FIXINGS

Remove the fixings (13mm bolt & T25 torx screw) from the positions shown below and retain for later use.



3. SECURE LOOM GUARDS

Secure the loom guard in place using the fixings removed in step 2. When securing the bottom fixing place the supplied square washer into the recessed gap as shown in FIG. 1.



4. ADJUSTING THE LOOM GUARDS

Adjust the plate as far out as it goes before it clashes with the door (**carefully open and close the door to test this**). When happy with the position tighten the M6 flange nuts. Repeat process for the other side.

