

IN9191

Loom Guard - Twin Rear Doors

THANK YOU FOR PURCHASING A VAN GUARD LOOM GUARD

SUITS THE FOLLOWING MODELS

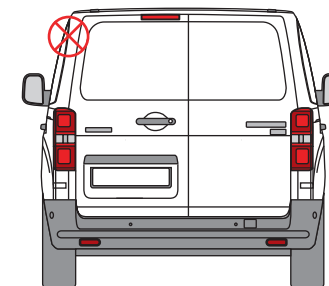
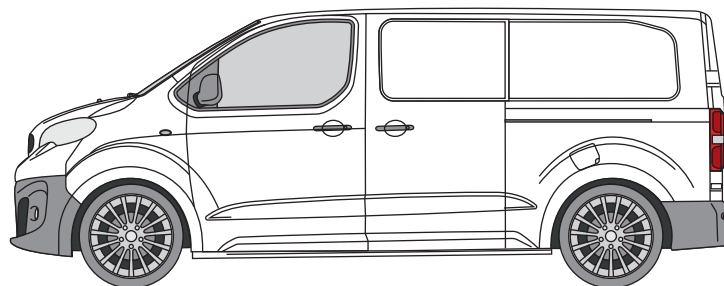
Vehicle:

Citroen Dispatch 2016 on
Peugeot Expert 2016 on
Fiat Scudo 2022 on
Toyota Proace 2016 on
Vauxhall Vivaro 2019 on

Door:

Rear - Twin

⊗ Indicates approximate placement of guard

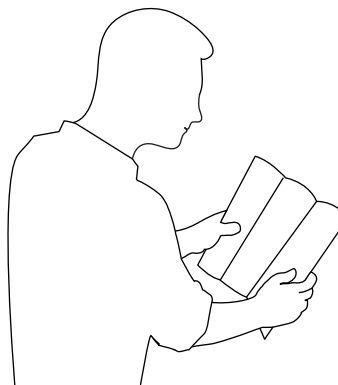


CAUTION

PLEASE TAKE THE TIME TO READ THROUGH THE IMPORTANT INFORMATION BELOW BEFORE PROCEEDING TO FIT THIS PRODUCT



FAILURE TO TAKE NOTICE OF THE FOLLOWING INFORMATION MAY RESULT IN DAMAGE TO THE VEHICLE.



Important: Follow the instructions and all measurements carefully. Double check measurements before making any cuts. Drawings are for guidance only. Every effort has been made to ensure the accuracy of the instructions provided however Van Guard Accessories Ltd accepts no liability for any inaccuracies of either the drawings provided or vehicle variations. All bare metal should be treated with a manufacturer approved anti-corrosion compound and no liability is accepted for any incorrect installation or corrosion to body panels or within cavities. It is the sole responsibility of the installer to ensure the suitability of both the vehicle and of the supplied parts before installation is started. No liability is accepted for the fitting of the products.

This FITTING INSTRUCTION is the property of VAN GUARD ACCESSORIES LTD. and must not be used for manufacturing purposes, copied nor communicated in any way to third parties without written permission from VAN GUARD ACCESSORIES LTD.
IN9191_A

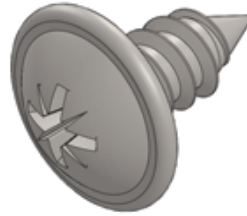
Van Guard Accessories Ltd
Fair Oak Close, Exeter Airport Business Park,
Exeter, Devon, EX5 2UL
www.van-guard.co.uk

SUPPLIED COMPONENTS

ME3245 X1
(LOOM GUARD)



FX4090 X3
(SELF TAP SCREW)



Wear the appropriate protective equipment (safety glasses & gloves) while fitting this product.



Dispose of packaging materials responsibly - Do not dispose until you have checked all parts and fixings are present.

FITTING THE LOOM GUARD

Open the rear doors to reveal the wiring loom and place the supplied guard around it in the position shown. Secure in place using three self tap screws (drill size = 3.2mm).



TAKE CARE WHEN DRILLING. USE AS SHORT A DRILL BIT AS POSSIBLE.

CAREFULLY OPEN AND CLOSE THE DOOR TO ENSURE LOOM GUARD DOES NOT CLASH PRIOR TO SECURING IN PLACE.