

IN9192

External Shield - Sliding Door

THANK YOU FOR PURCHASING A VAN GUARD EXTERNAL SHIELD

SUITS THE FOLLOWING MODELS

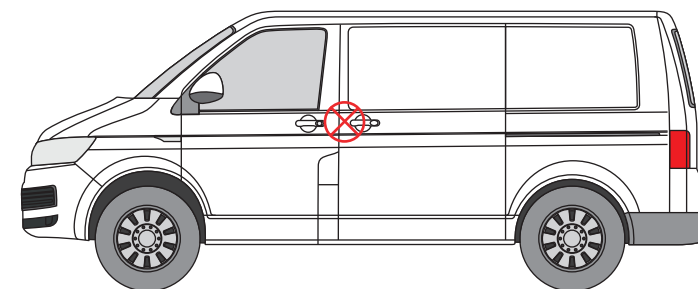
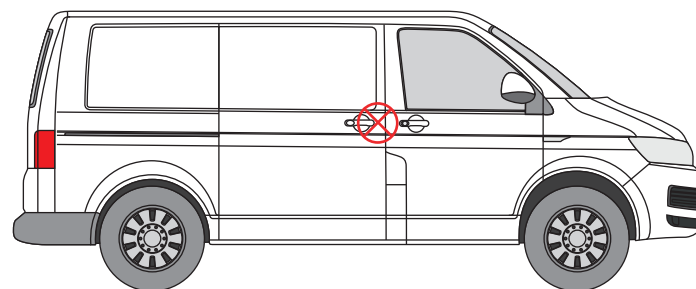
Vehicle:

VW Transporter T5 2002 - 2015

VW Transporter T6 2015 - 2025

Door:

Sliding - Driver's / Passenger's



 Indicates approximate placement of shield



CAUTION

PLEASE TAKE THE TIME TO READ THROUGH THE IMPORTANT INFORMATION BELOW BEFORE PROCEEDING TO FIT THIS PRODUCT



FAILURE TO TAKE NOTICE OF THE FOLLOWING INFORMATION MAY RESULT IN DAMAGE TO THE VEHICLE.



Important: Follow the instructions and all measurements carefully. Double check measurements before making any cuts. Drawings are for guidance only. Every effort has been made to ensure the accuracy of the instructions provided however Van Guard Accessories Ltd accepts no liability for any inaccuracies of either the drawings provided or vehicle variations. All bare metal should be treated with a manufacturer approved anti-corrosion compound and no liability is accepted for any incorrect installation or corrosion to body panels or within cavities. It is the sole responsibility of the installer to ensure the suitability of both the vehicle and of the supplied parts before installation is started. No liability is accepted for the fitting of the products.

This FITTING INSTRUCTION is the property of VAN GUARD ACCESSORIES LTD. and must not be used for manufacturing purposes, copied nor communicated in any way to third parties without written permission from VAN GUARD ACCESSORIES LTD.
IN9192_A

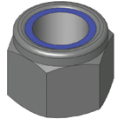
Van Guard Accessories Ltd
Fair Oak Close, Exeter Airport Business Park,
Exeter, Devon, EX5 2UL
www.van-guard.co.uk

VGP604

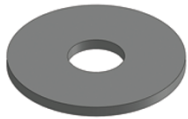
AS3402 X1
(SHIELD)



FX4004 X4
(M6 NYLOC NUT)



FX4121 X4
(M6 WASHER)



MA6098 X1
(RUBBER GASKET)

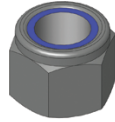


VGP605

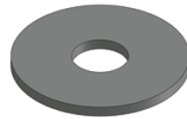
AS3402 X2
(SHIELD)



FX4004 X8
(M6 NYLOC NUT)



FX4121 X8
(M6 WASHER)



MA6098 X2
(RUBBER GASKET)



Wear the appropriate protective equipment (safety glasses & gloves) while fitting this product.



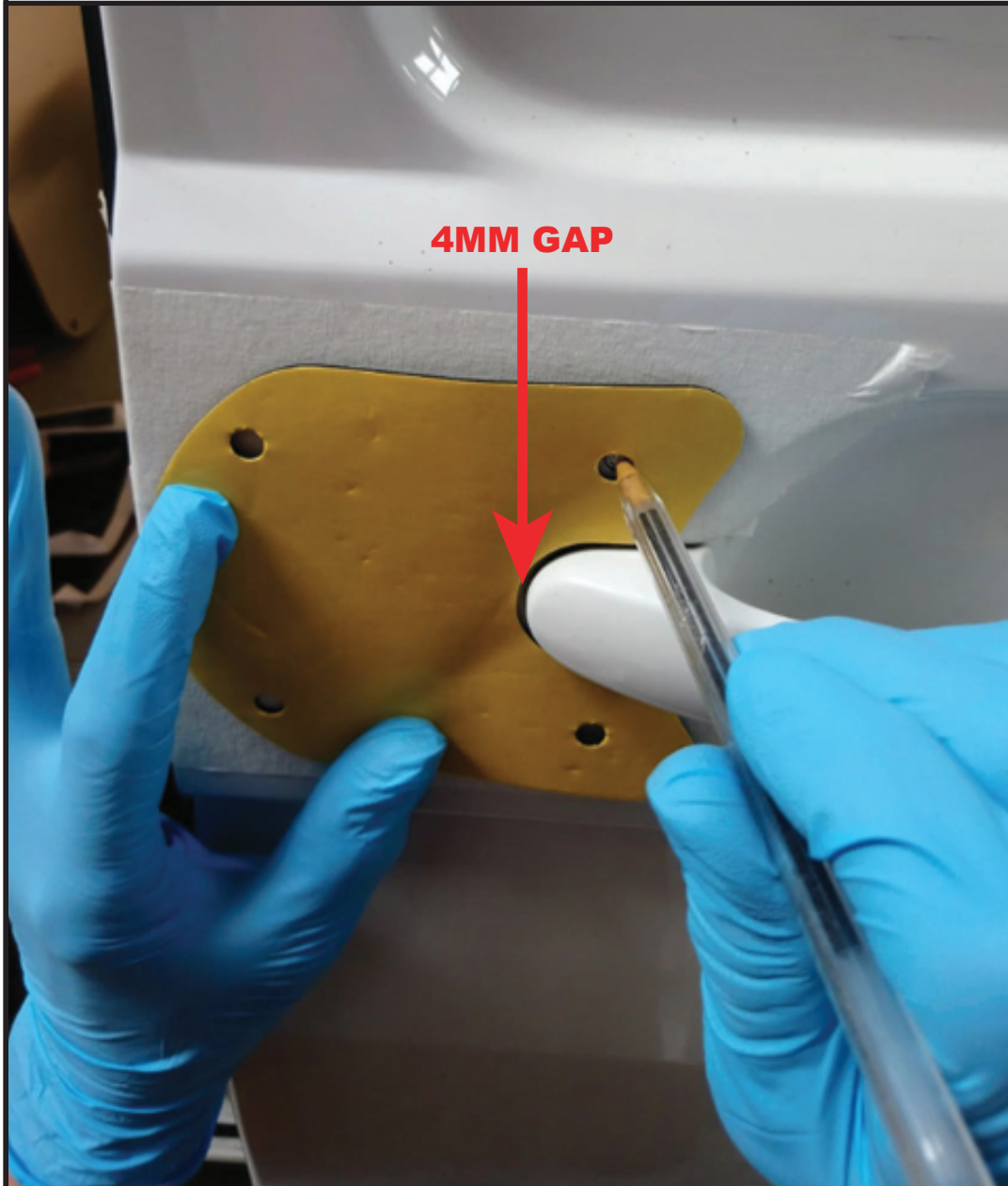
Dispose of packaging materials responsibly - Do not dispose until you have checked all parts and fixings are present.

FITTED IMAGE



1. MARKING HOLES

Protect the area around the handle using masking tape and then position the rubber gasket around the handle and mark out the four hole positions. When positioning the rubber gasket ensure to leave a 4mm gap as shown.



2. REMOVAL OF DOOR PANEL

Remove the vehicles door panel cover and any ply lining if applicable (both top and bottom sections of the door).



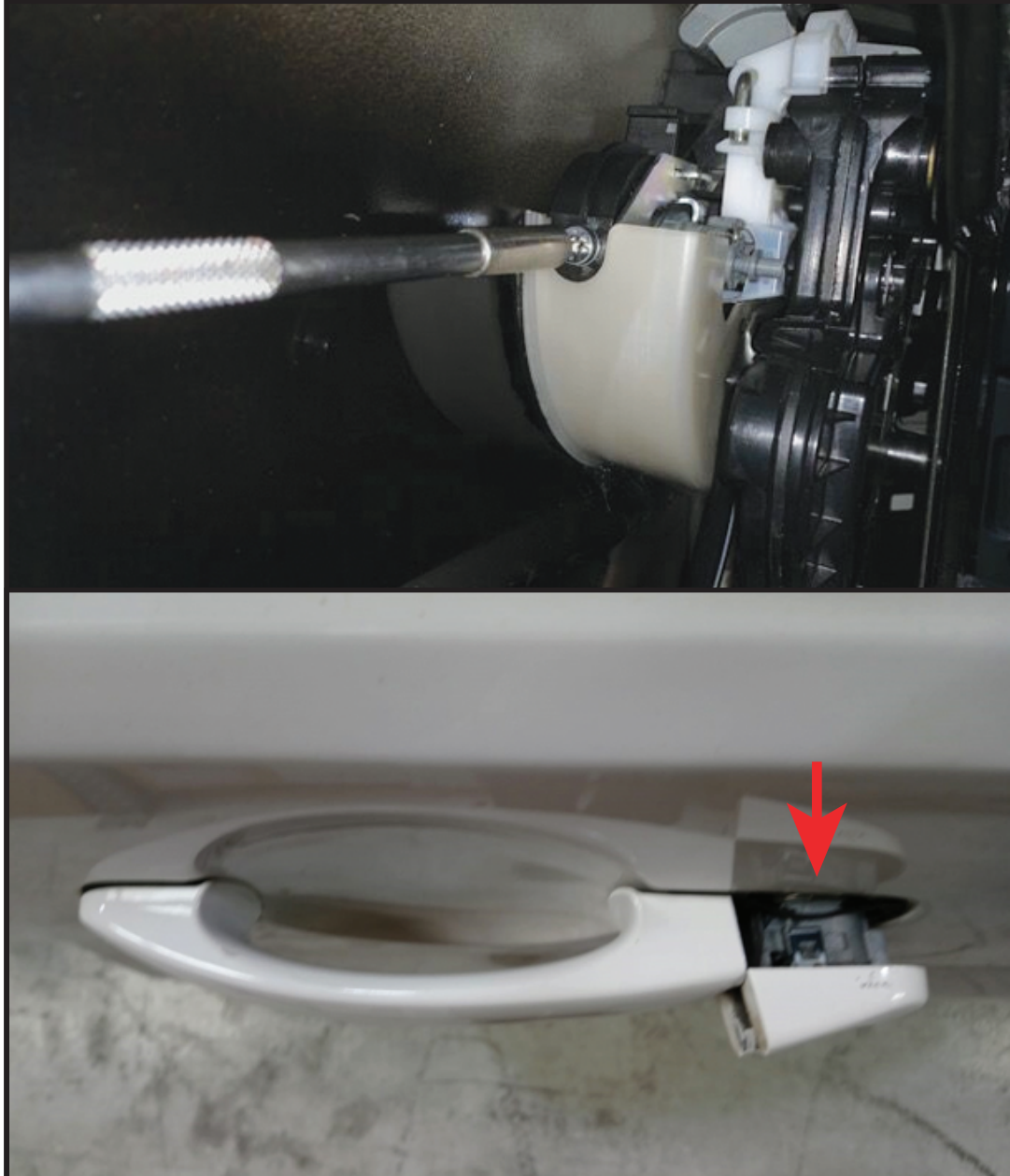
3. REMOVAL OF INTERNAL ESCAPE HANDLE

Remove the internal escape handle and the internal lock cover.



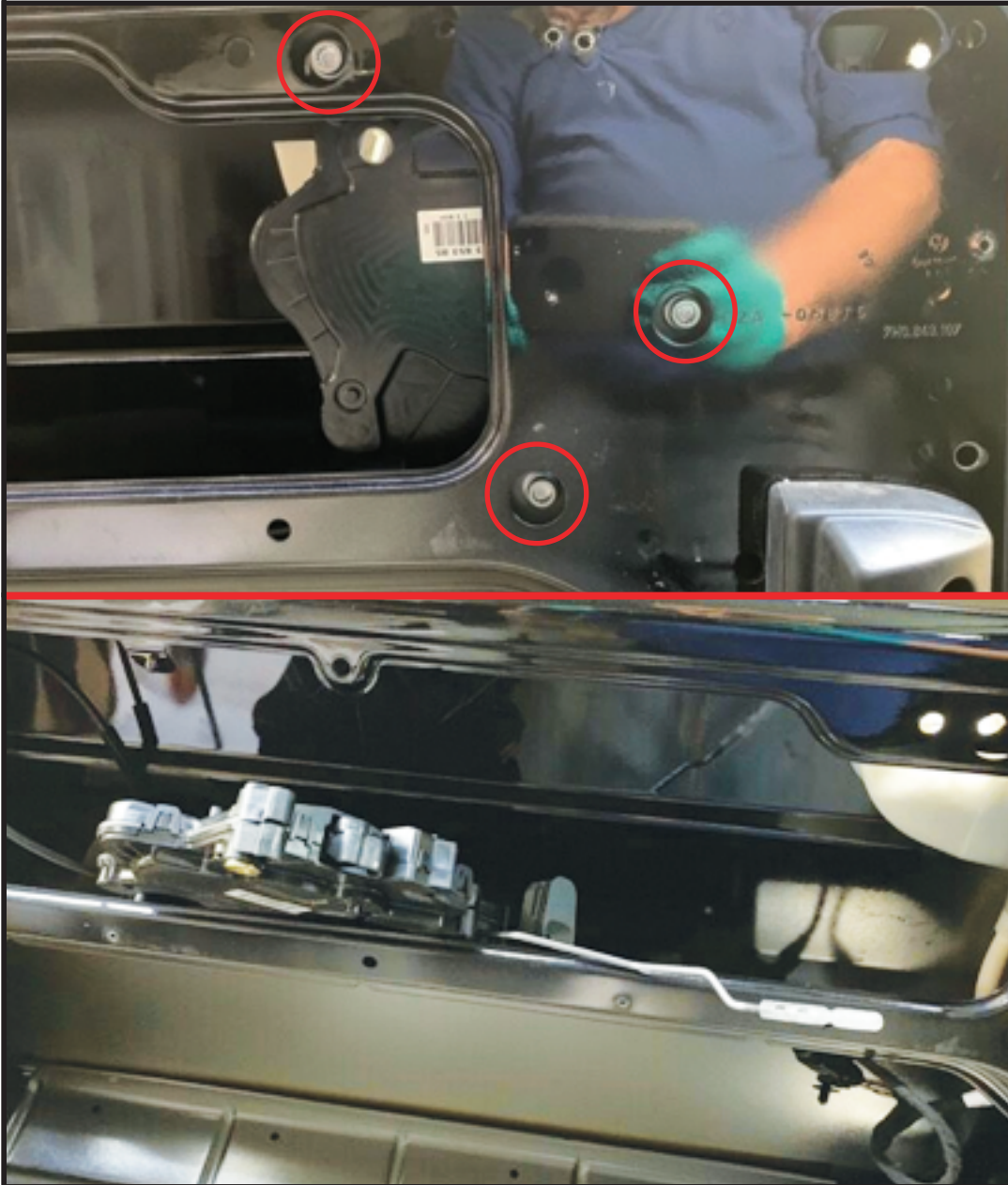
4. REMOVAL OF HANDLE CAP

Unscrew the T25 torx screw shown from the internal handle carriage to allow you to remove the handle cap along with the cylinder. The torx screw is retained so will not come out.



5. REMOVAL OF CENTRAL LOCKING MECHANISM

Remove the three screws shown which will allow you to remove the central locking mechanism.



6. REMOVAL OF EXTERNAL HANDLE

Slide out and remove the external handle. When the handle has been removed undo the screw shown.



7. REMOVAL OF DRAINAGE CUP

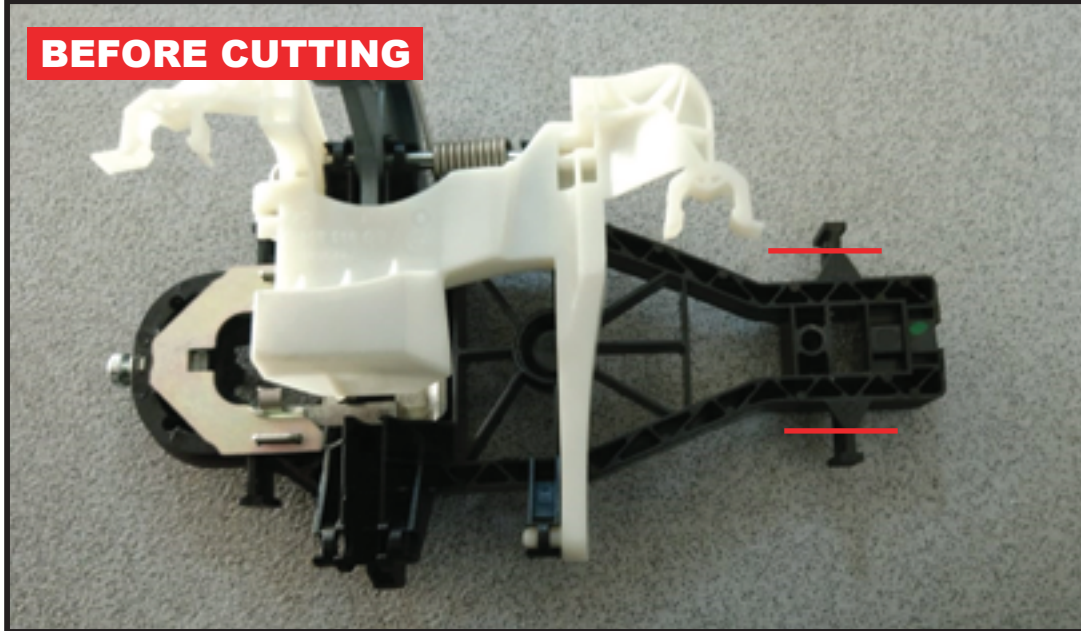
Remove the drainage cup.



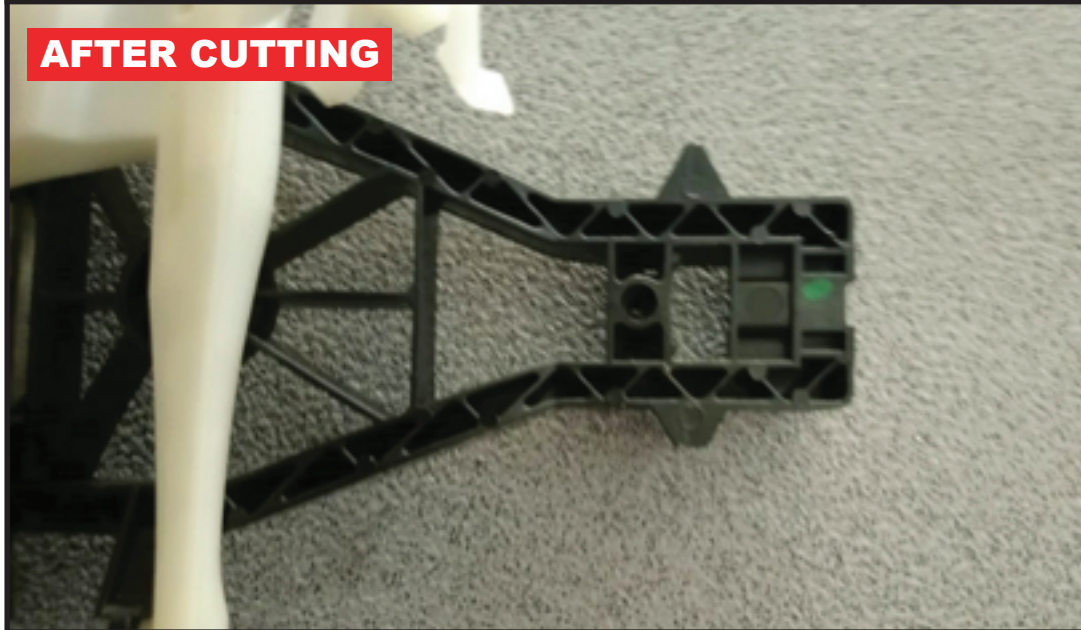
8. REMOVING INTERNAL HANDLE HOUSING

Remove the internal handle housing and cut off the lugs in the two positions shown.

BEFORE CUTTING



AFTER CUTTING



9. DRILL HOLES

Carefully drill the four marked positions 6.5mm. Remove masking tape once all four holes have been drilled.



TREAT ALL BARE METAL WITH A MANUFACTURER APPROVED ANTI-CORROSION COMPOUND.



10. FITTING THE SHIELD

Stick the rubber gasket to the shield and then fit the external shield using M6 washers and M6 nyloc nuts. Once fitted re-fit the handle and all other components (including the internal carriage / internal release handle) in a reverse of the previous steps.



TAKE CARE WHEN TIGHTENING THE M6 NYLOC NUTS - DO NOT OVERTIGHTEN.

