

**IN9194**

**Internal Shield - Twin Rear Door**

**THANK YOU FOR PURCHASING A VAN GUARD INTERNAL SHIELD**

**SUITS THE FOLLOWING MODELS**

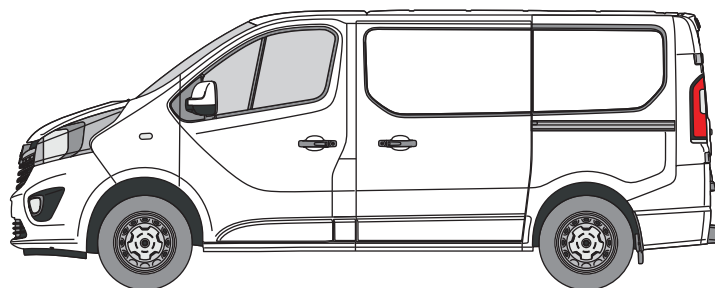
**Vehicle:**

Vauxhall Vivaro 2014 - 2019  
Renault Trafic 2014 onwards  
Nissan NV300 2016 - 2021  
Nissan Primastar 2022 onwards  
Fiat Talento 2016 - 2020

**Door:**

Rear - Twin

⊗ Indicates approximate placement of shield

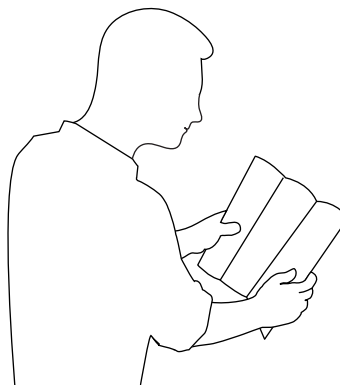


**CAUTION**

**PLEASE TAKE THE TIME TO READ THROUGH THE IMPORTANT INFORMATION BELOW BEFORE PROCEEDING TO FIT THIS PRODUCT**



**FAILURE TO TAKE NOTICE OF THE FOLLOWING INFORMATION MAY RESULT IN DAMAGE TO THE VEHICLE.**



**Important:** Follow the instructions and all measurements carefully. Double check measurements before making any cuts. Drawings are for guidance only. Every effort has been made to ensure the accuracy of the instructions provided however Van Guard Accessories Ltd accepts no liability for any inaccuracies of either the drawings provided or vehicle variations. All bare metal should be treated with a manufacturer approved anti-corrosion compound and no liability is accepted for any incorrect installation or corrosion to body panels or within cavities. It is the sole responsibility of the installer to ensure the suitability of both the vehicle and of the supplied parts before installation is started. No liability is accepted for the fitting of the products.

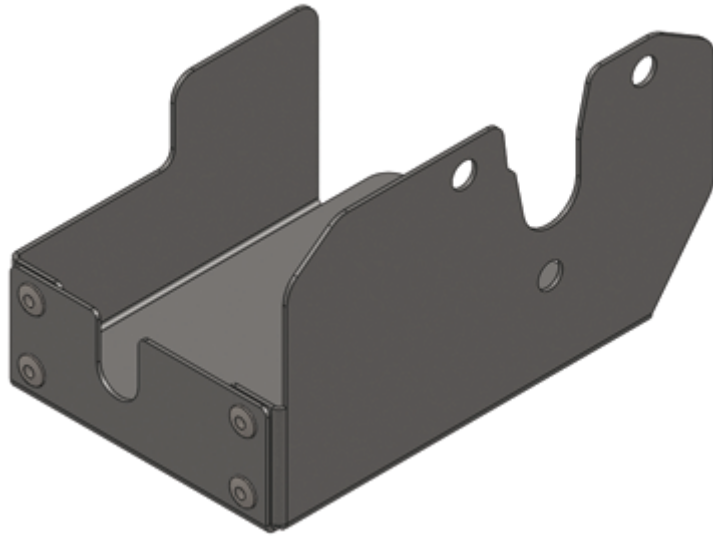
This FITTING INSTRUCTION is the property of VAN GUARD ACCESSORIES LTD. and must not be used for manufacturing purposes, copied nor communicated in any way to third parties without written permission from VAN GUARD ACCESSORIES LTD.

IN9194\_B (CN:00114)

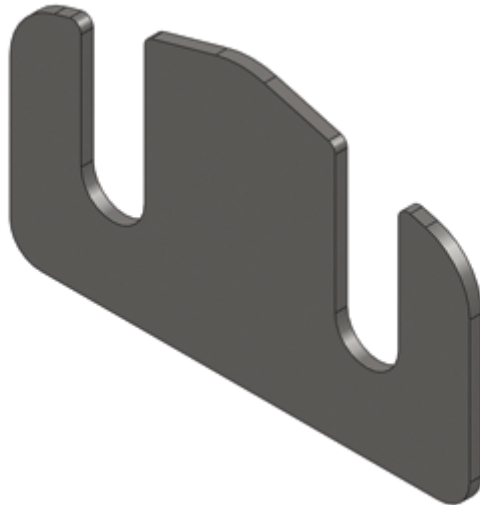
Van Guard Accessories Ltd  
Fair Oak Close, Exeter Airport Business Park,  
Exeter, Devon, EX5 2UL  
[www.van-guard.co.uk](http://www.van-guard.co.uk)

## SUPPLIED COMPONENTS

**AS3407 X1**  
(SHIELD)



**ME3146 X1**  
(PACKER PLATE)



Wear the appropriate protective equipment (safety glasses & gloves) while fitting this product.



Dispose of packaging materials responsibly - Do not dispose until you have checked all parts and fixings are present.

## FITTED IMAGE



## 1. REMOVAL OF INTERNAL HANDLE

Undo the T30 torx screw holding the internal handle in place and pull the handle from the aperture. Disconnect the rod from the mechanism which will allow you to pull away the handle entirely. This is refitted at the end of the installation when refitting the door panel.



## 2. REMOVAL OF DOOR PANEL

With the internal release handle now removed, remove the door panel cover using a plastic trim removal tool. This is refitted at the end of the installation.



### 3.1. REMOVAL OF INTERNAL CARRIAGE

Unclip the rod shown below. Image shows the rod in the unclipped position.



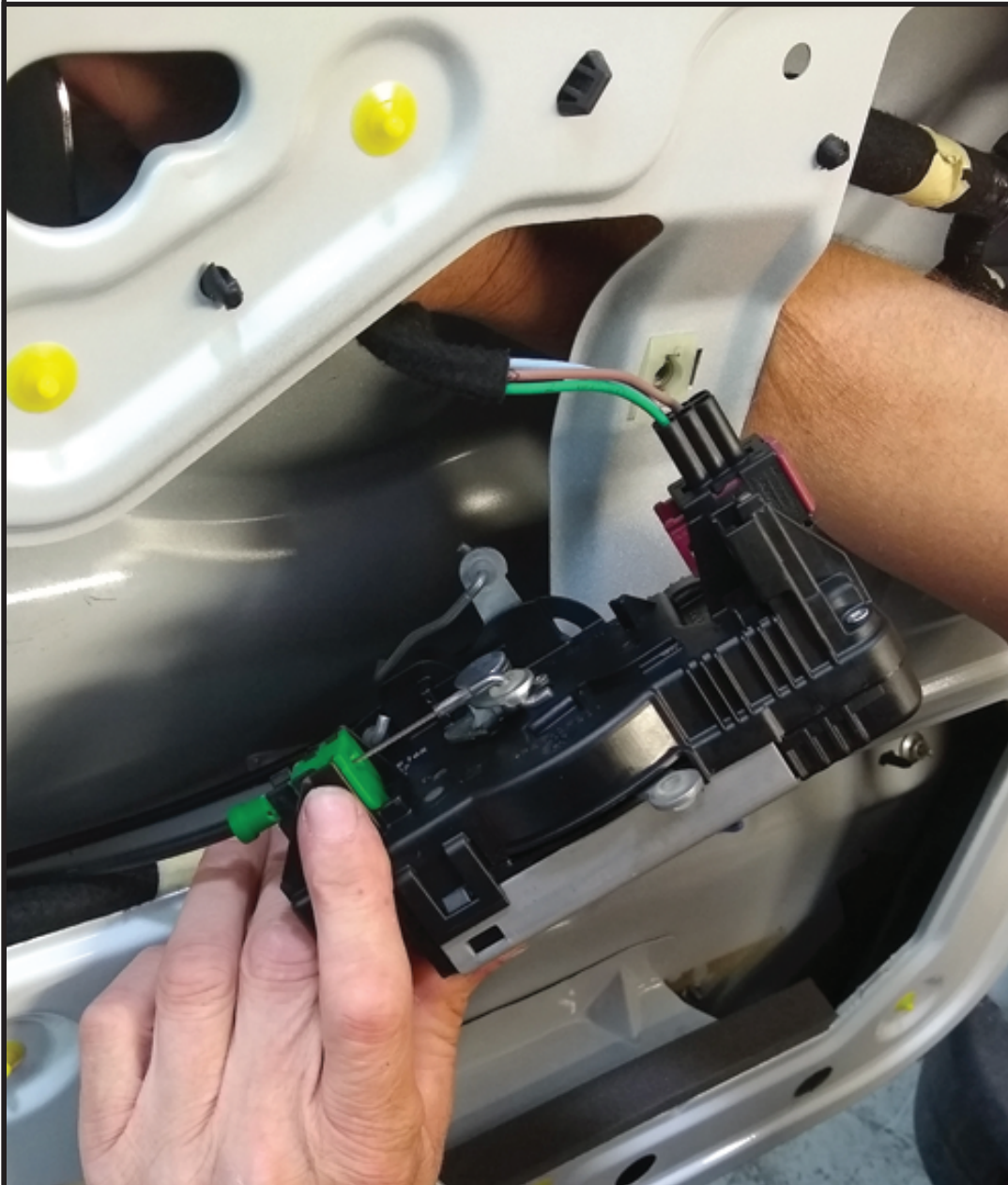
### 3.2. REMOVAL OF INTERNAL CARRIAGE

Remove the three screws shown below. Retain these screws for use again later.



### 3.3. REMOVAL OF INTERNAL CARRIAGE

Drop the internal carriage down.



### 4. POSITIONING THE SHIELD

Position the internal carriage into the shield and place back in position in the door as shown below.



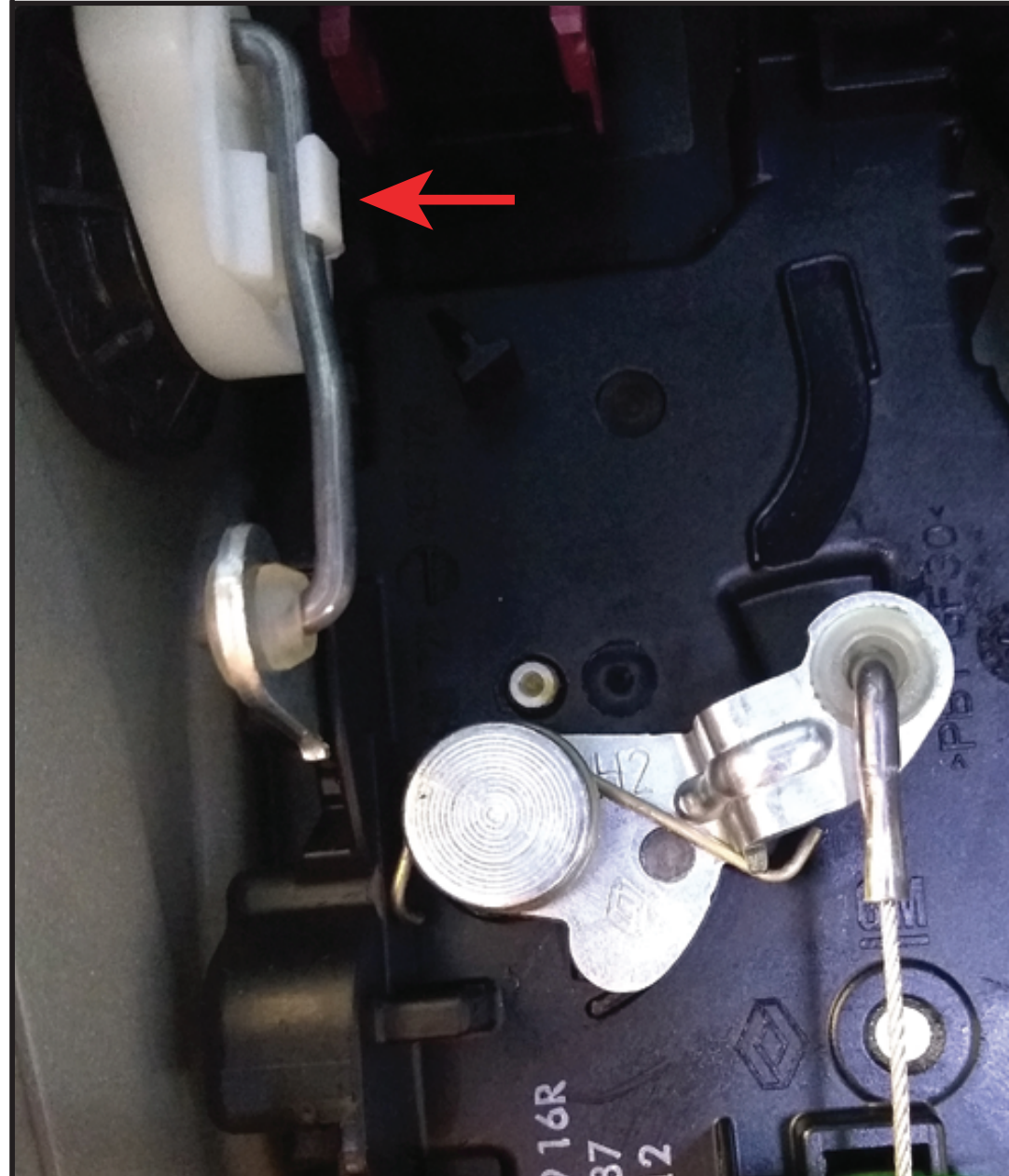
## 5. SECURE INTERNAL CARRIAGE / SHIELD

Resecure the three screws removed in step 3.2.



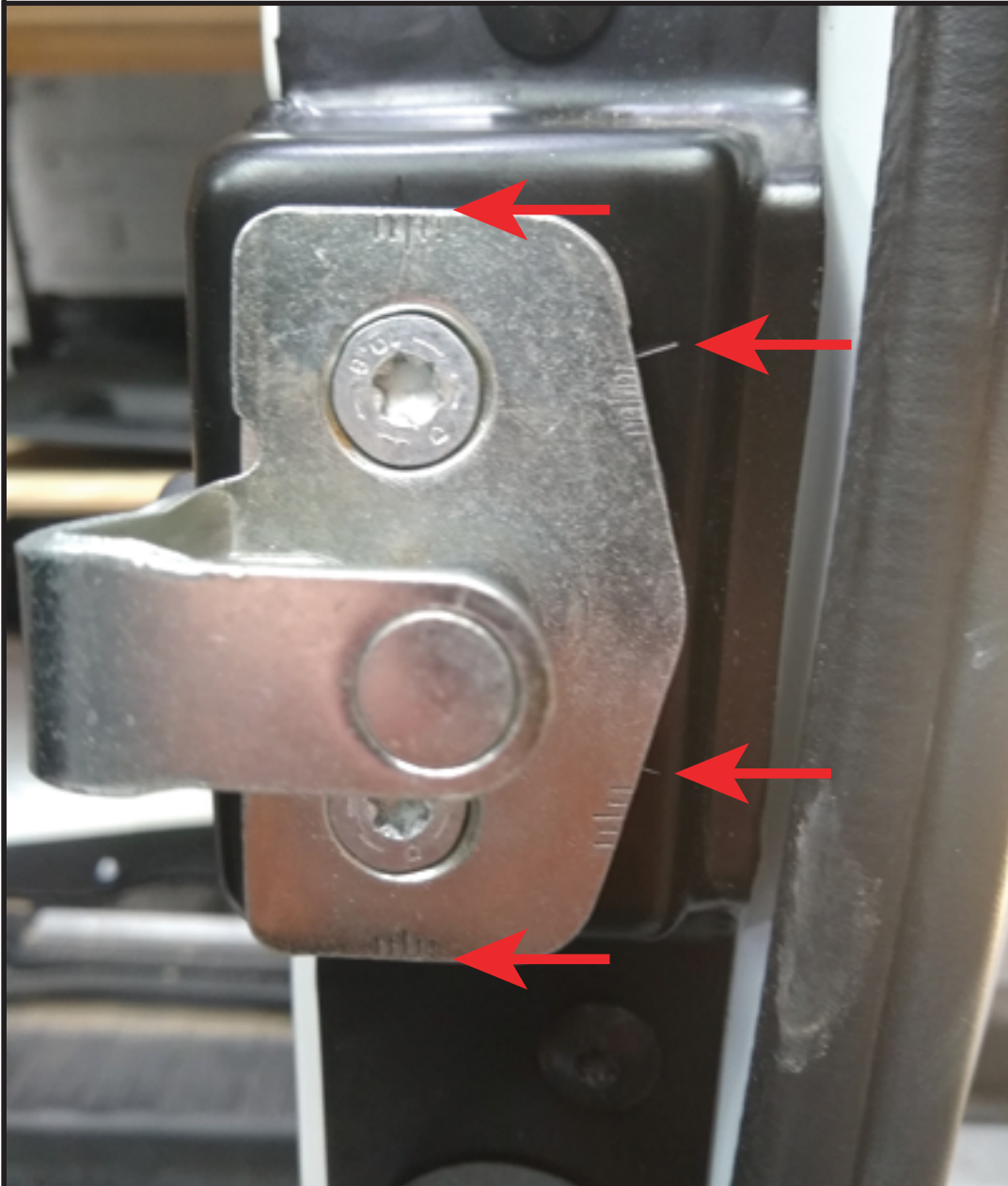
## 6. RECONNECT THE ROD

Reconnect the rod removed in step 3.1.



## 7.1. FITTING THE PACKER PLATE

Make a note of where your vehicles ID lines are in relation to the lines on the bracket.



## 7.2. FITTING THE PACKER PLATE

Loosen the two fixings and slide in the packer plate behind the bracket. Line up the vehicles existing bracket ensuring the lines are in the original position as per previous step and tighten fixings.



## 8. REFITTING THE DOOR PANEL

Close the door and check that all works as it should. Once the door has been checked, reattach the rod to the internal release handle and then refit the door panel followed by the internal release handle.

