

**IN9223**

**Replacement Lock - Cab Door**

**THANK YOU FOR PURCHASING A VAN GUARD REPLACEMENT LOCK**

**SUITS THE FOLLOWING MODELS**

**Vehicle:**  
Ford Transit 2014 on

**Door:**  
Cab - Driver's



⊗ Indicates approximate placement of lock



**CAUTION**

**PLEASE TAKE THE TIME TO READ THROUGH THE IMPORTANT INFORMATION BELOW BEFORE PROCEEDING TO FIT THIS PRODUCT**



**FAILURE TO TAKE NOTICE OF THE FOLLOWING INFORMATION MAY RESULT IN DAMAGE TO THE VEHICLE.**



**Important:** Follow the instructions and all measurements carefully. Double check measurements before making any cuts. Drawings are for guidance only. Every effort has been made to ensure the accuracy of the instructions provided however Van Guard Accessories Ltd accepts no liability for any inaccuracies of either the drawings provided or vehicle variations. All bare metal should be treated with a manufacturer approved anti-corrosion compound and no liability is accepted for any incorrect installation or corrosion to body panels or within cavities. It is the sole responsibility of the installer to ensure the suitability of both the vehicle and of the supplied parts before installation is started. No liability is accepted for the fitting of the products.

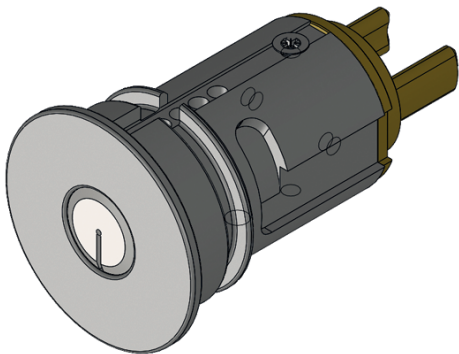
This FITTING INSTRUCTION is the property of VAN GUARD ACCESSORIES LTD. and must not be used for manufacturing purposes, copied nor communicated in any way to third parties without written permission from VAN GUARD ACCESSORIES LTD.

IN9223\_G (CN:00118)

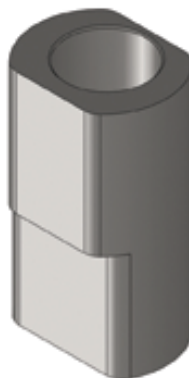
Van Guard Accessories Ltd  
Fair Oak Close, Exeter Airport Business Park,  
Exeter, Devon, EX5 2UL  
[www.van-guard.co.uk](http://www.van-guard.co.uk)

# SUPPLIED COMPONENTS

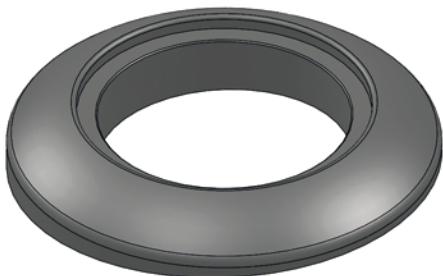
**AS3516 X1**  
(REPLACEMENT LOCK BODY)



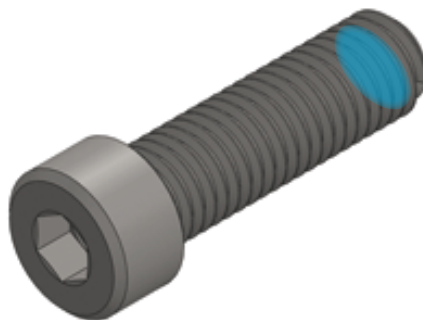
**ME3484 X1**  
(ANTI ROTATION BLOCK)



**AS3504 X1**  
(BEZEL)



**FX4253 X1**  
(SOCKET CAP SCREW - M4X20)



**FAILURE TO TAKE NOTICE OF THE FOLLOWING INFORMATION MAY RESULT IN DAMAGE TO THE VEHICLE.**

- 1.** Follow the instructions and all measurements carefully. Double check measurements before making any cuts. Drawings are for guidance only. Every effort has been made to ensure the accuracy of the instructions provided however Van Guard Accessories Ltd accepts no liability for any inaccuracies of either the drawings provided or vehicle variations.
- 2.** All bare metal should be treated with a manufacturer approved anti-corrosion compound and no liability is accepted for any incorrect installation or corrosion to body panels or within cavities.
- 3.** It is the sole responsibility of the installer to ensure the suitability of both the vehicle and of the supplied parts before installation is started. No liability is accepted for the fitting of the products.



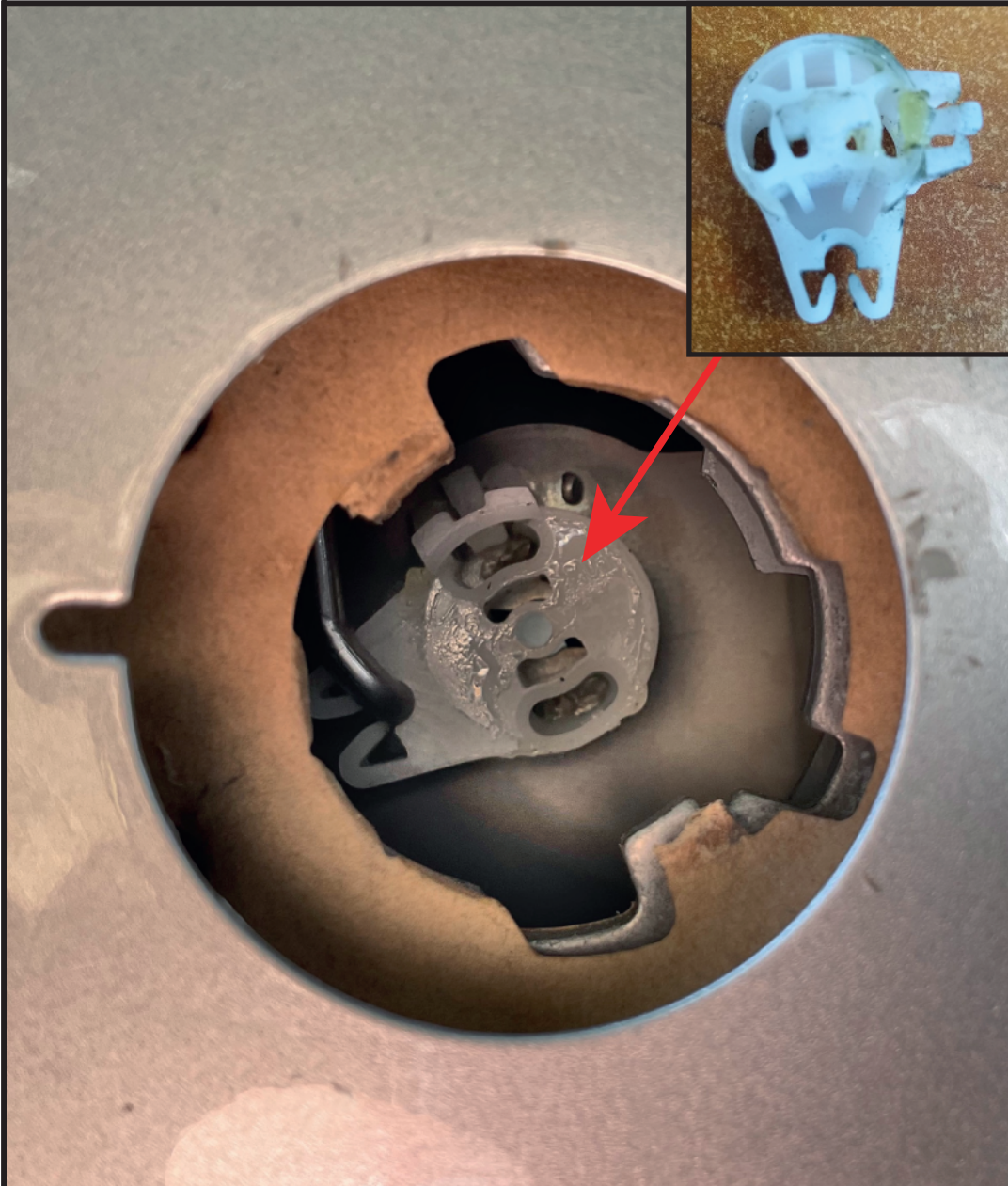
Wear the appropriate protective equipment (safety glasses & gloves) while fitting this product.



Dispose of packaging materials responsibly - Do not dispose until you have checked all parts and fixings are present.

## IMPORTANT NOTE

If the vehicles original door lock has been attacked please check that the white plastic cam inside has not been damaged. If this has been damaged you will need to replace the latch before the replacement lock can be fitted.



## IMPORTANT NOTE

If fitted, the secondary bezel will need to be removed at step 13. This can be carefully prised away as shown in the photo below.



**01** Remove the plastic cover from the upper left door pocket panel. Once the plastic cover has been removed, use a 7mm socket to remove the 7mm hex bolt.



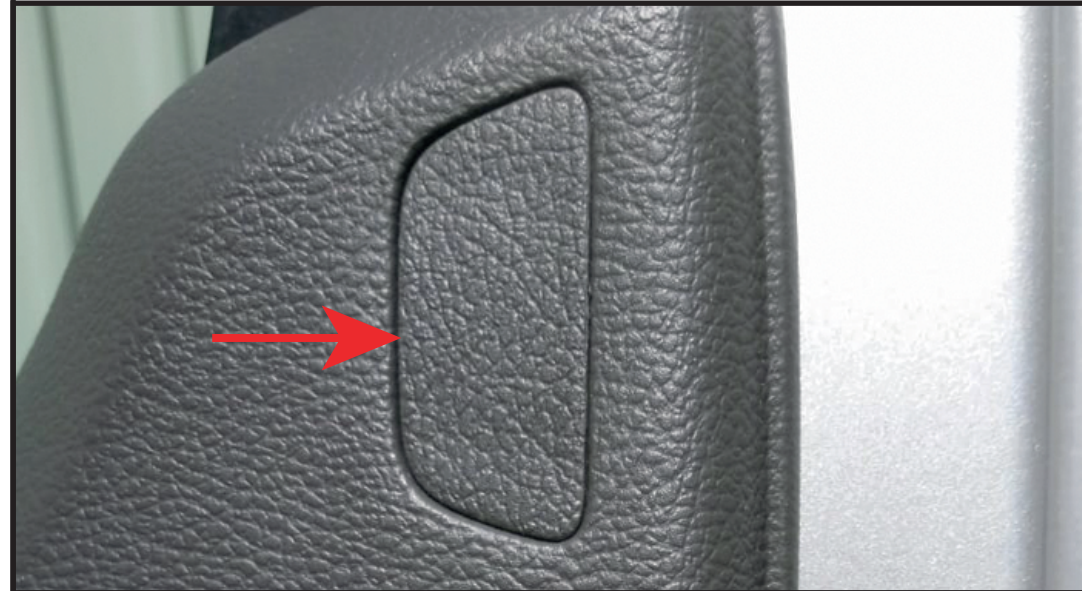
**02** Rotate (90 degrees) the two retaining clips located towards the bottom of the door panel.



**03** Locate and remove the two plastic retaining pins holding the door pocket and then pull the pocket towards you. Once the panel is removed, use a 7mm socket to remove the three 7mm hex bolts.



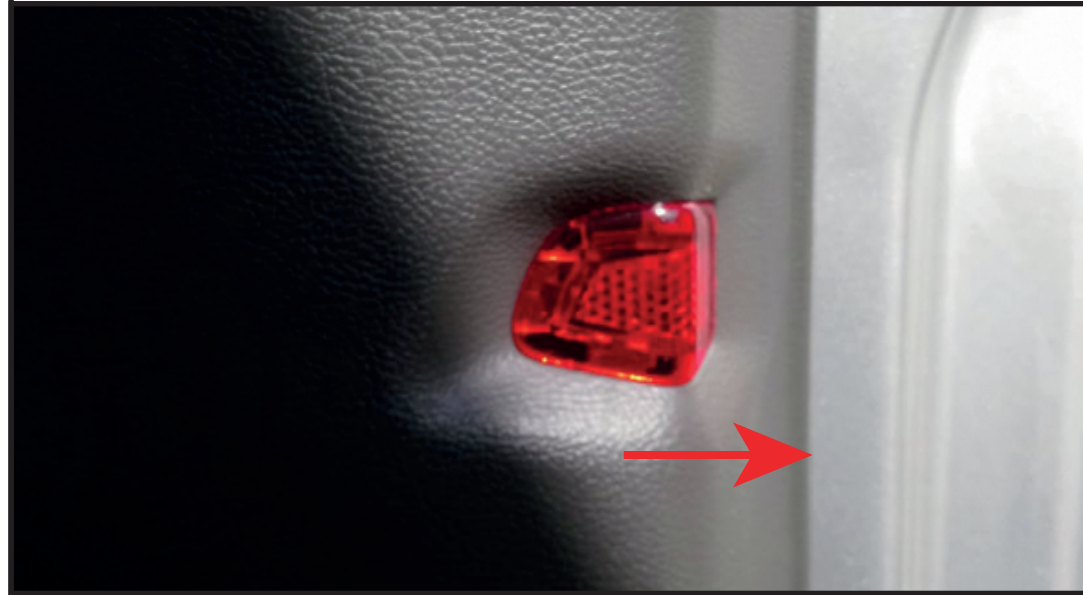
**04** Remove the plastic cover from the top right of the doorpanel. Once the plastic cover has been removed, use a 7mm socket to remove the 7mm hex bolt.



**05** Carefully remove the plastic cover from behind the internal release handle to reveal the T25 torx screw. Remove the screw.



**06** Carefully remove the reflector by sliding it in the direction shown (do not try and raise or lift) to reveal the 7mm hex bolt, use a 7mm socket to remove the bolt.



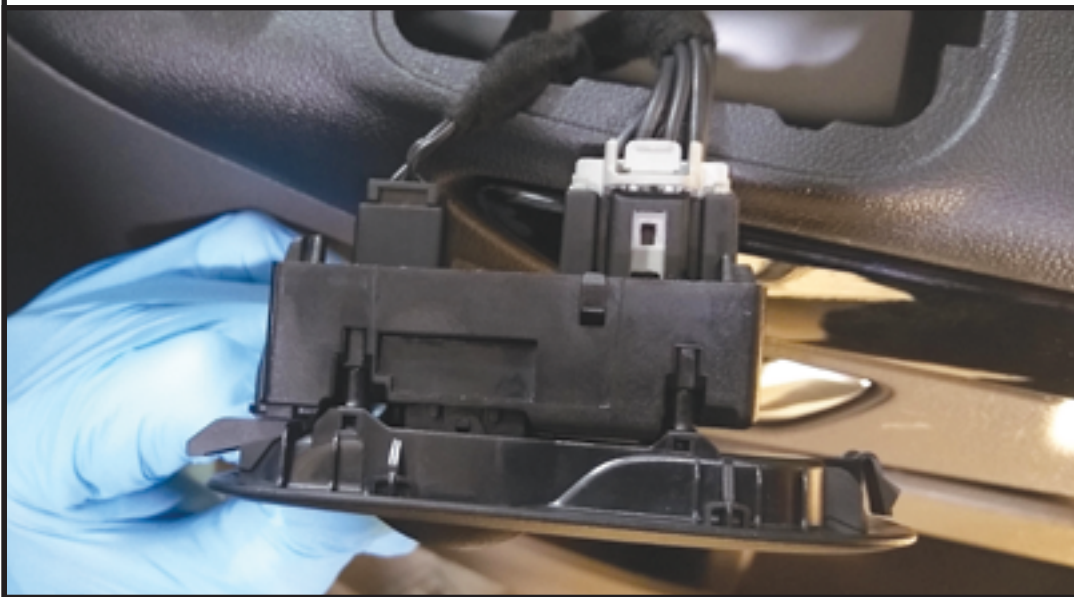
**07** Carefully remove the plastic cover from the top of the door panel pocket to reveal the 7mm hex bolt, use a 7mm socket to remove the bolt.



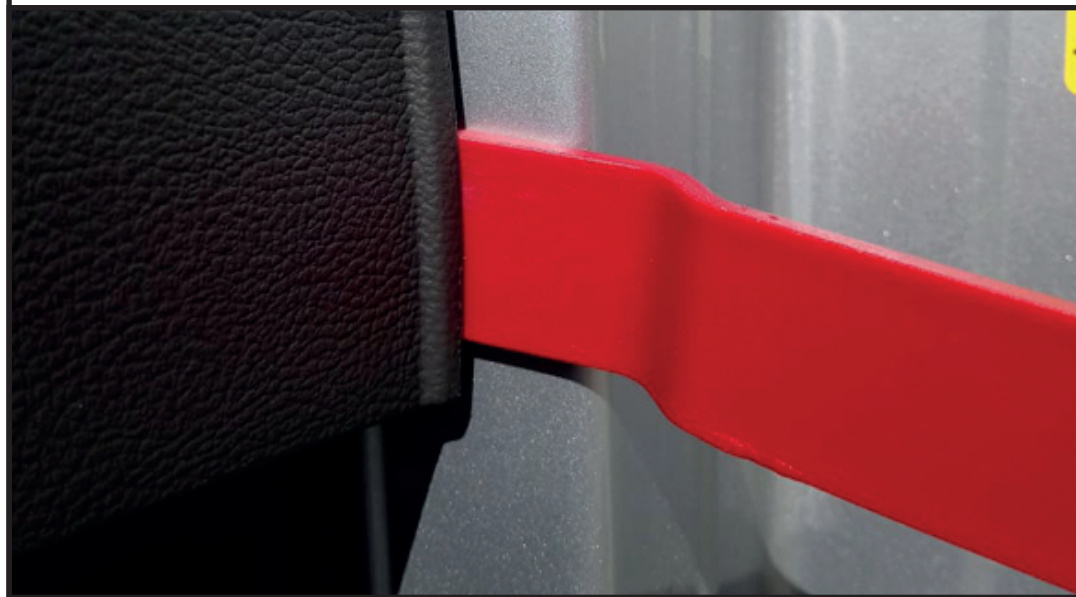
**08** Carefully lift the window switch control panel from its aperture.



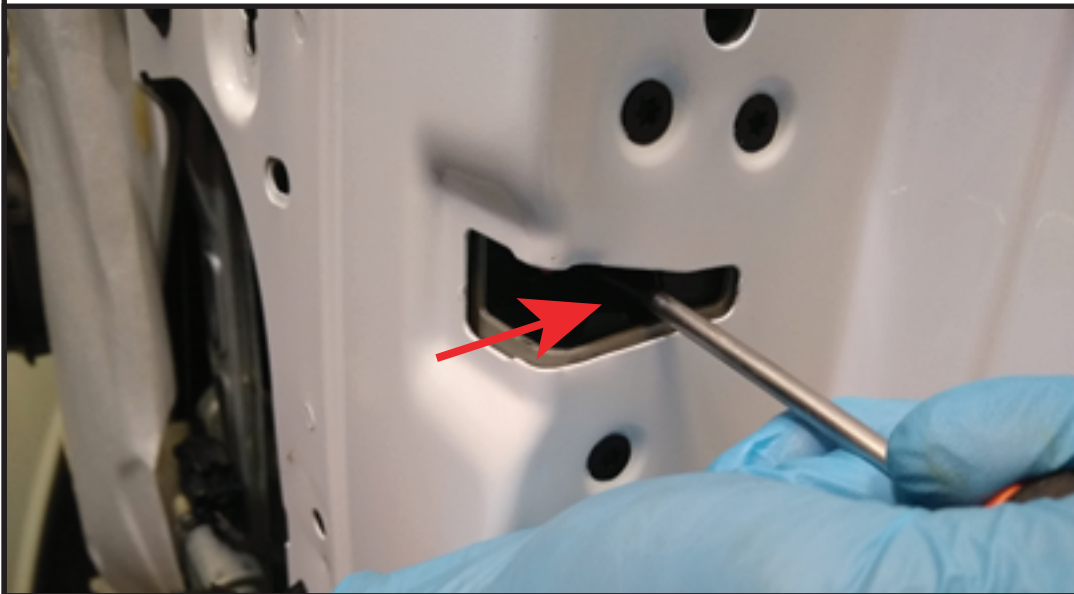
**09** Disconnect the plugs by pushing the tabs inwards and then remove the window switch.



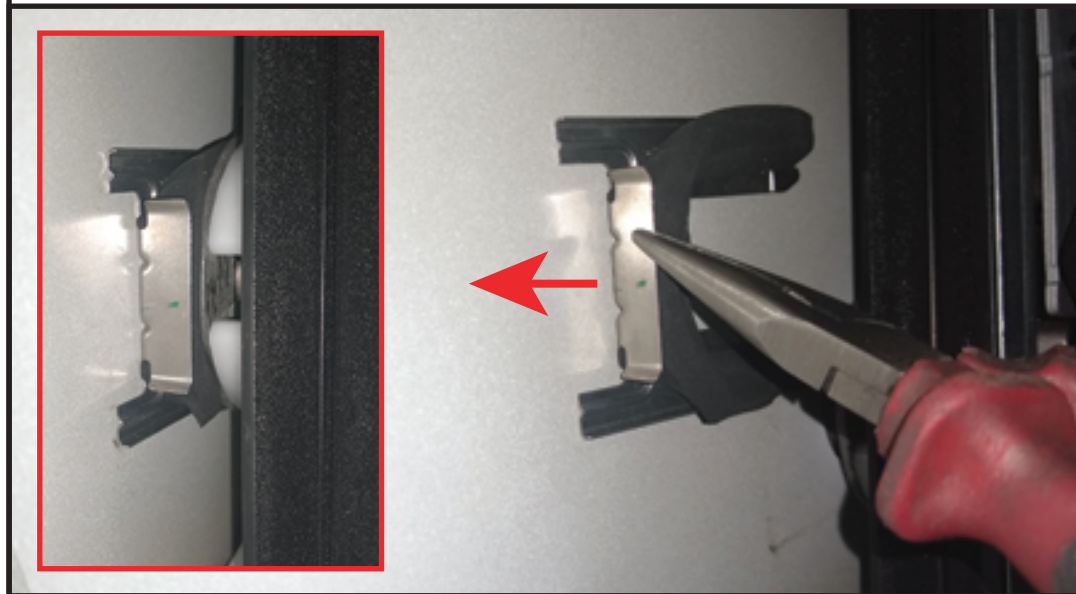
**10** Carefully unclip the door panel starting in the lower right corner as shown. For the door panel to fully come off the door, the internal release handle cable has to be removed. With the panel removed, carefully peel the liner away to access the mechanism.



**11** Manually push in the lever on the latch using a screwdriver or similar. **It is important to only push the latch in one click.**



**12** Use a set of pliers to remove the retaining clip as shown.



**13** Insert the vehicles existing key into the cylinder and turn clockwise. Push the sprung loaded button in fully and with the button pushed in release the key. Regrip key and turn anti-clockwise which will allow you to remove the entire body from the door.



**14** Clean any remaining residue from the door and prepare around the aperture by wiping with IPA wipes. Let this dry before commencing the next step.



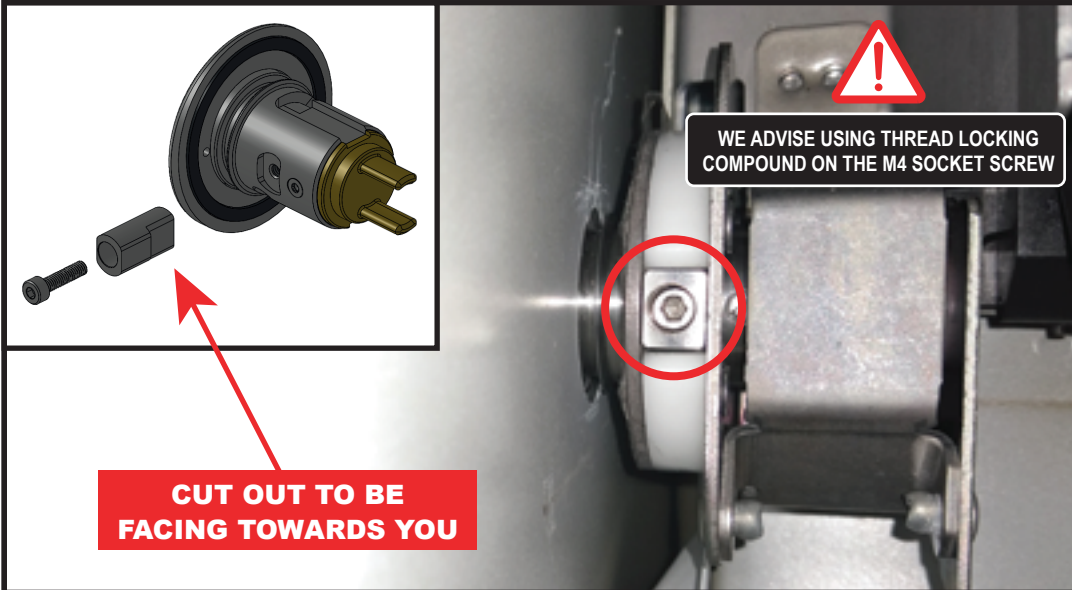
**15** Peel away the protective film from the back of the bezel and be cautious not to get any contaminants on the adhesive surface. Position the replacement lock body into the bezel.



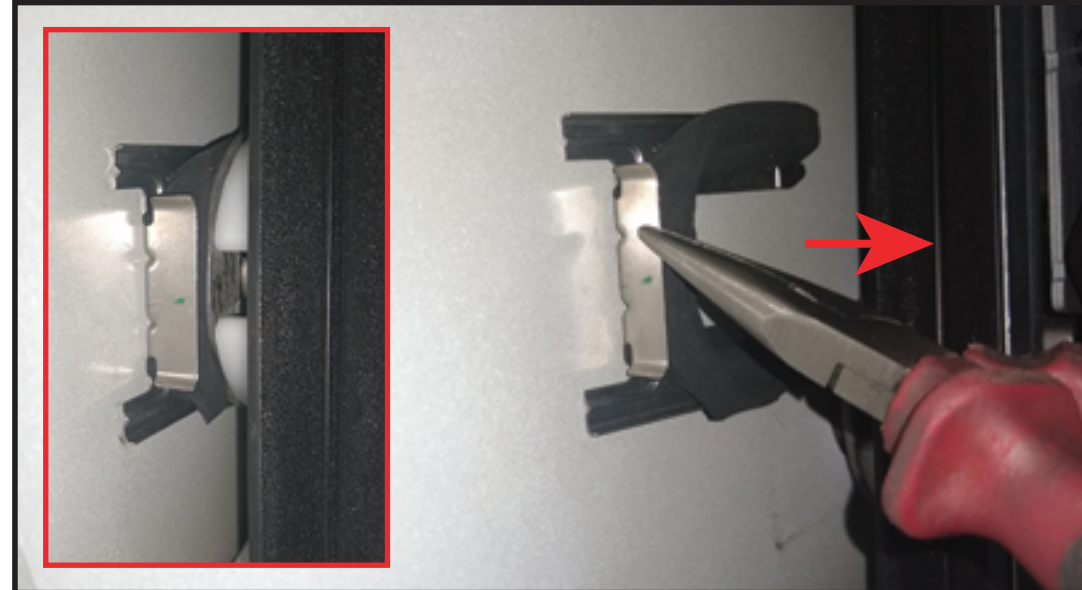
**16** Insert the assembly into the original aperture locating the grooves on the body with the cut outs in the mechanism. Be cautious alignment is correct before sticking the assembly to the body. Apply pressure to the bezel to allow the adhesive backing to bond.



**17** Secure the supplied anti rotation block to the replacement lock body through the gap shown using the supplied M4X16 socket screw (3mm allen key required). Use a lock threading compound on the M4 socket screw.



**18** Use a set of pliers to refit the retaining clip as shown.



**19** Keep the door open and test the operation of the lock (testing that both the lock and unlock function is working correctly). If happy with the operation of the lock refit the door panel in a reverse of the earlier steps.



**20** After fitting the replacement lock you may need to reset the window control switch. Do this by following the steps detailed below.

- > **Press and hold the downwards button to send the window to the bottom.**
- > **Press and hold the upwards button to send the window to the top.**
- > **When the window reaches the top, hold the up button for four seconds until you hear a 'click', this indicates that the window has been reset.**
- > **Installation is now complete.**