

IN9224

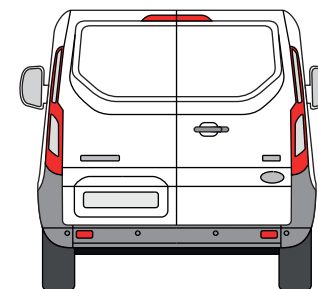
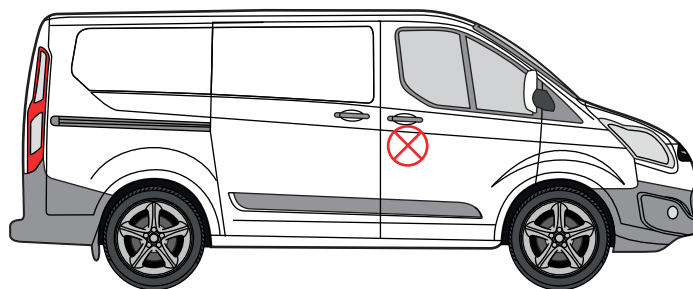
Replacement Lock - Cab Door

THANK YOU FOR PURCHASING A VAN GUARD REPLACEMENT LOCK

SUITS THE FOLLOWING MODELS

Vehicle:
Ford Transit Custom 2012-2023

Door:
Cab - Driver's



 Indicates approximate placement of lock

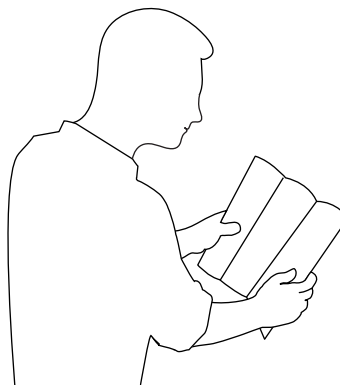


CAUTION

PLEASE TAKE THE TIME TO READ THROUGH THE IMPORTANT INFORMATION BELOW BEFORE PROCEEDING TO FIT THIS PRODUCT



FAILURE TO TAKE NOTICE OF THE FOLLOWING INFORMATION MAY RESULT IN DAMAGE TO THE VEHICLE.



Important: Follow the instructions and all measurements carefully. Double check measurements before making any cuts. Drawings are for guidance only. Every effort has been made to ensure the accuracy of the instructions provided however Van Guard Accessories Ltd accepts no liability for any inaccuracies of either the drawings provided or vehicle variations. All bare metal should be treated with a manufacturer approved anti-corrosion compound and no liability is accepted for any incorrect installation or corrosion to body panels or within cavities. It is the sole responsibility of the installer to ensure the suitability of both the vehicle and of the supplied parts before installation is started. No liability is accepted for the fitting of the products.

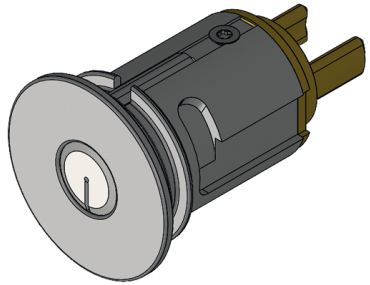
This FITTING INSTRUCTION is the property of VAN GUARD ACCESSORIES LTD. and must not be used for manufacturing purposes, copied nor communicated in any way to third parties without written permission from VAN GUARD ACCESSORIES LTD.

IN9224_I (CN:00162)

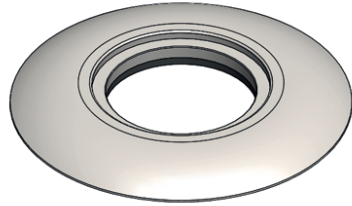
Van Guard Accessories Ltd
Fair Oak Close, Exeter Airport Business Park,
Exeter, Devon, EX5 2UL
www.van-guard.co.uk

SUPPLIED COMPONENTS

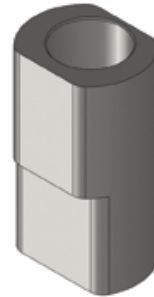
AS3515 X1
(REPLACEMENT LOCK BODY)



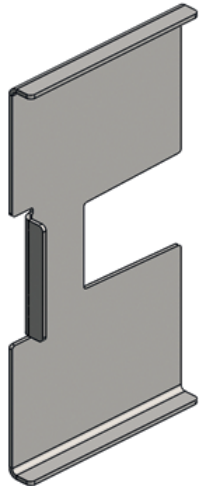
AS3486 X1
(BEZEL)



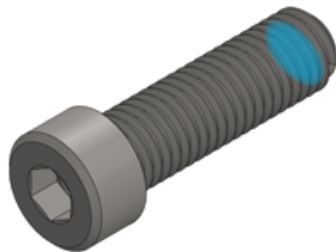
ME3484 X1
(ANTI ROTATION BLOCK)



ME3393 X1
(RETAINING PLATE)



FX4253 X1
(SOCKET CAP SCREW - M4X20)



FAILURE TO TAKE NOTICE OF THE FOLLOWING INFORMATION MAY RESULT IN DAMAGE TO THE VEHICLE.

- 1.** Follow the instructions and all measurements carefully. Double check measurements before making any cuts. Drawings are for guidance only. Every effort has been made to ensure the accuracy of the instructions provided however Van Guard Accessories Ltd accepts no liability for any inaccuracies of either the drawings provided or vehicle variations.
- 2.** All bare metal should be treated with a manufacturer approved anti-corrosion compound and no liability is accepted for any incorrect installation or corrosion to body panels or within cavities.
- 3.** It is the sole responsibility of the installer to ensure the suitability of both the vehicle and of the supplied parts before installation is started. No liability is accepted for the fitting of the products.



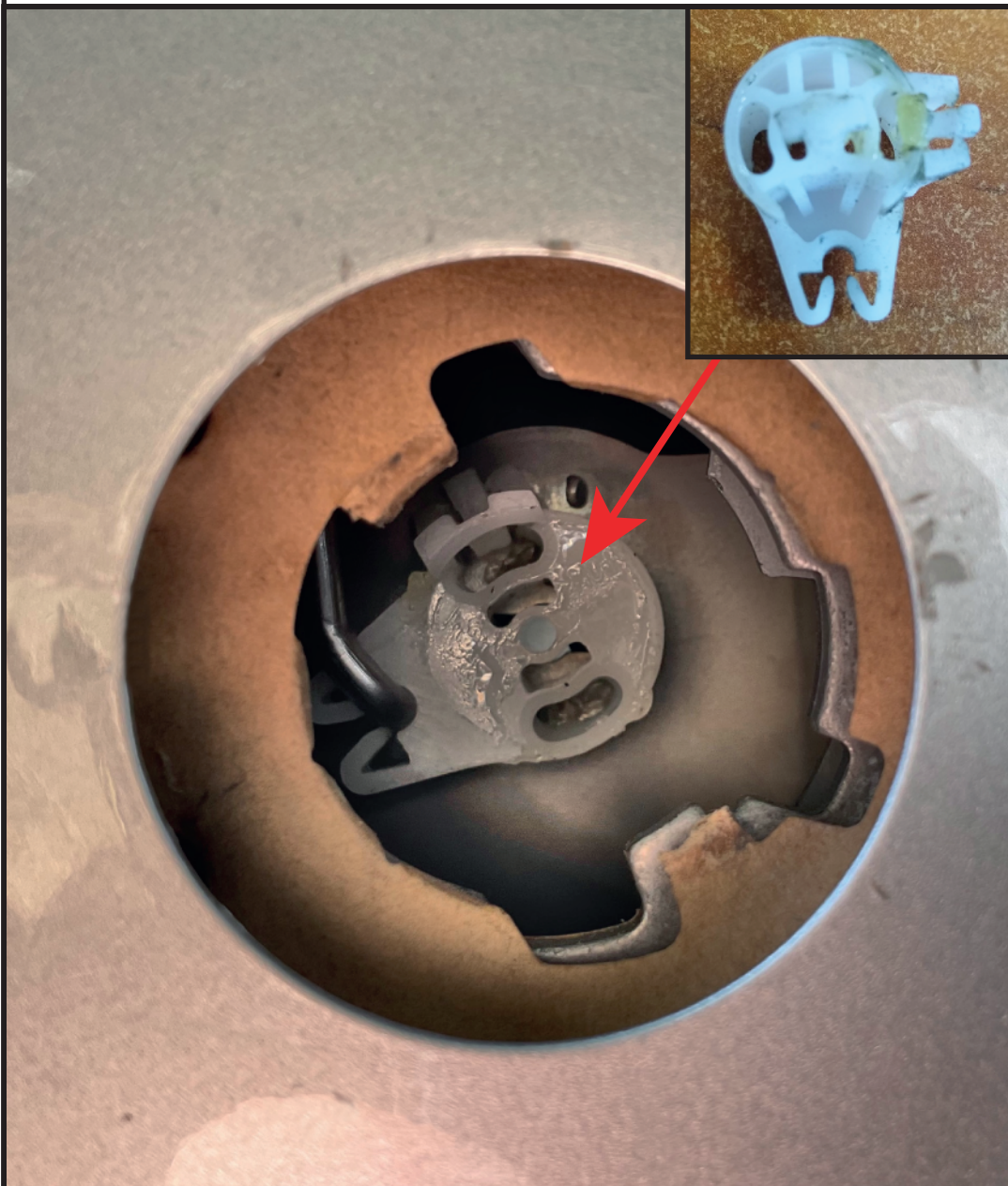
Wear the appropriate protective equipment (safety glasses & gloves) while fitting this product.



Dispose of packaging materials responsibly - Do not dispose until you have checked all parts and fixings are present.

IMPORTANT NOTE

If the vehicles original door lock has been attacked please check that the white plastic cam inside has not been damaged. If this has been damaged you will need to replace the latch before the replacement lock can be fitted.



IMPORTANT NOTE

There was a change to the door trim in 2018 (facelift models). Please compare your door trim to the two images below and follow the correct steps.



2012 - 2017 TRIM

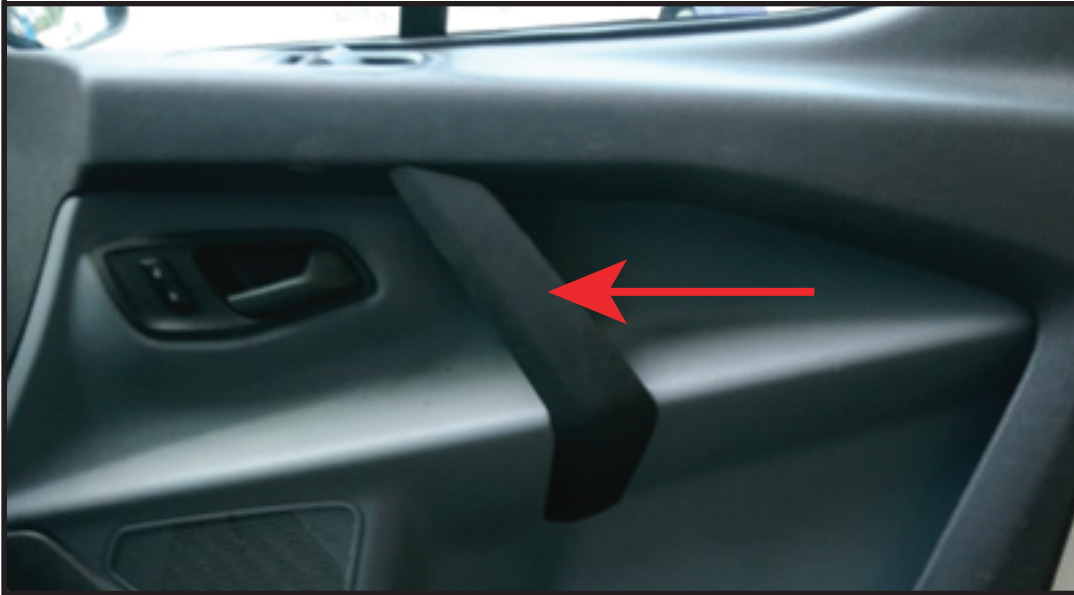
PAGES 4 - 7
&
PAGES 12 - 13



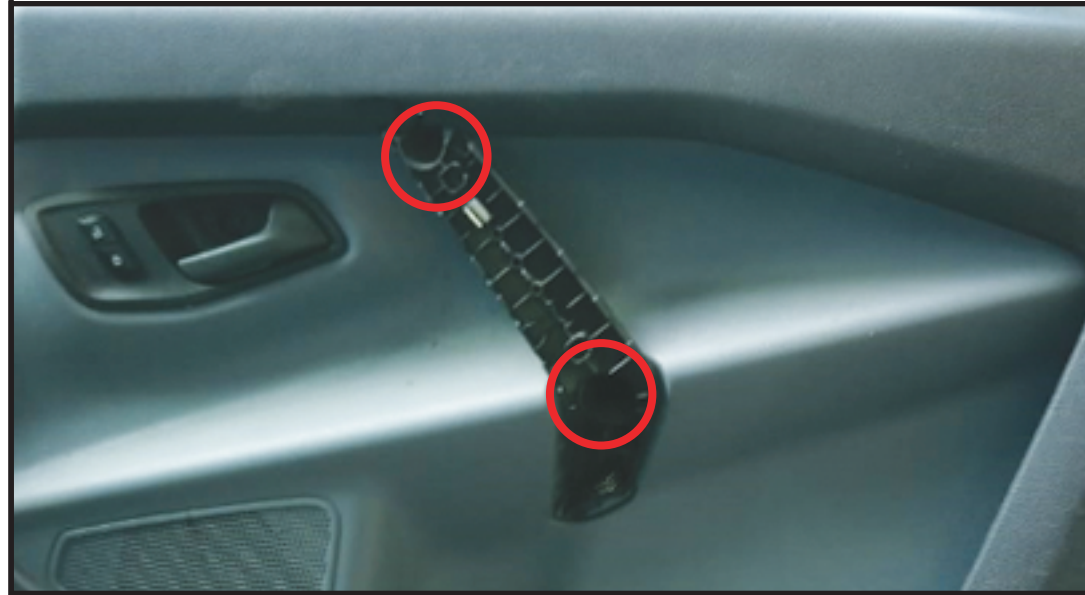
2018 ON TRIM

PAGES 8 - 11
&
PAGES 12 - 13

01 Carefully remove the front section of the plastic door handle trim to reveal the two torx screws.



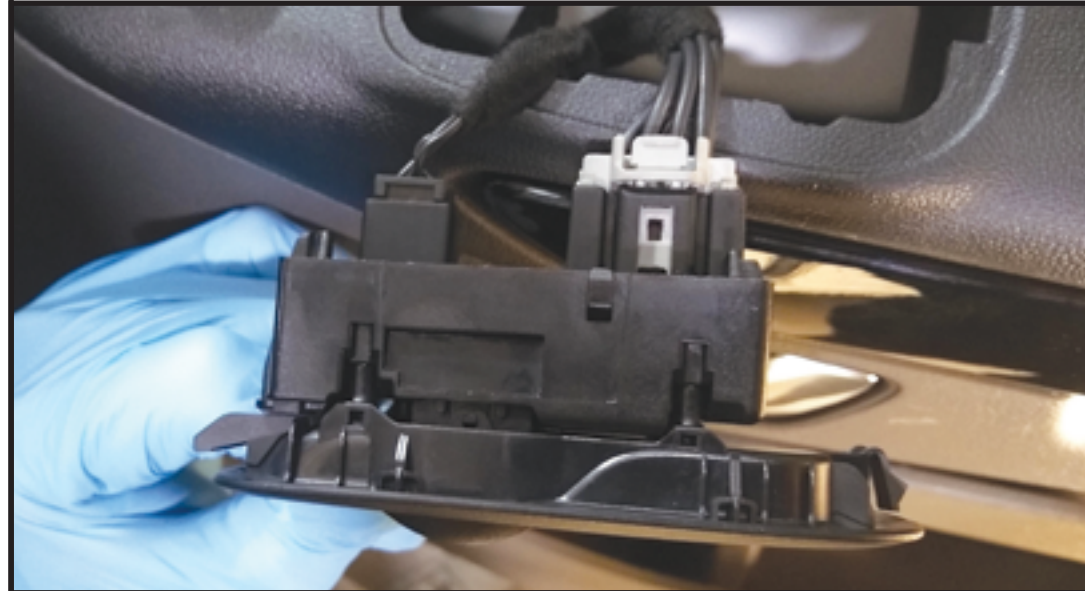
02 Remove the two T20 torx screws.



03 Carefully lift the window switch control panel from its aperture.



04 Disconnect the plugs by pushing the tabs inwards and then remove the window switch.



05 Carefully remove the mirror control switch and disconnect the plug.



06 Carefully remove the plastic cover from behind the handle to reveal the T20 torx screw. Remove the screw.



07 Remove the plastic cover from the top side of the door panel to reveal the T20 torx screw. Remove the screw.



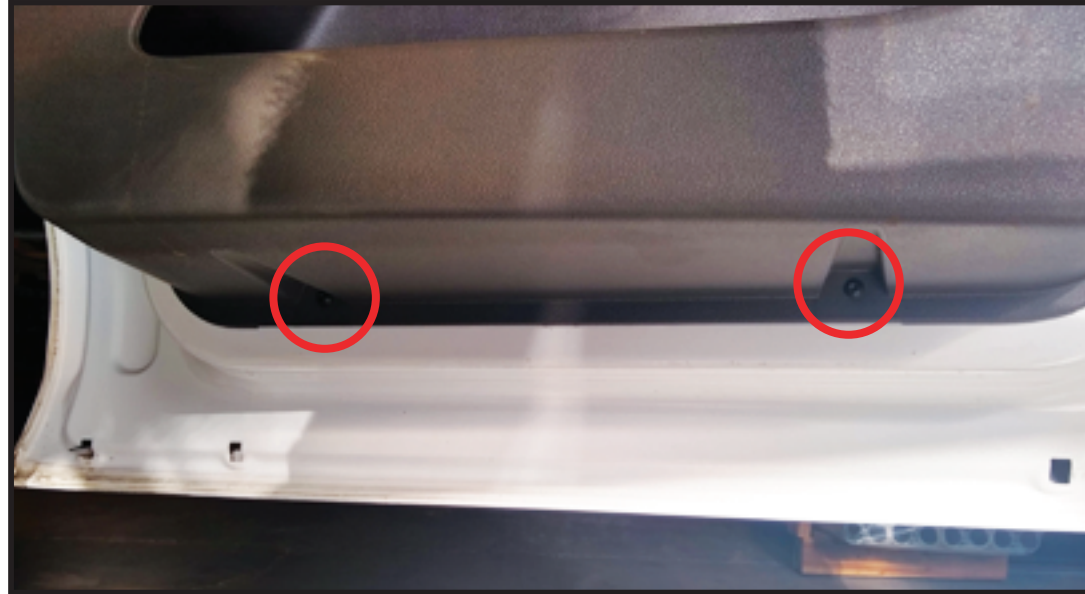
08 Carefully remove the reflector by sliding it in the direction shown (do not try and raise or lift) to reveal the T20 torx screw. Remove the screw.



09 Remove the plastic cover from the lower door pocket panel to reveal the T20 torx screw. Remove the screw.



10 Remove the two T20 torx screws from the bottom of the door panel.



11 Remove the T20 torx screw from the aperture used by the window switch control panel.



12 Carefully unclip the door panel starting in the lower right corner as shown.



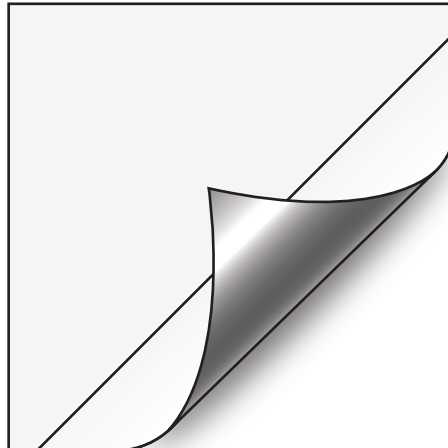
13 Remove the internal release handle cable which will allow you to fully remove the door panel.



14 Carefully peel the liner away from the top right corner as shown.



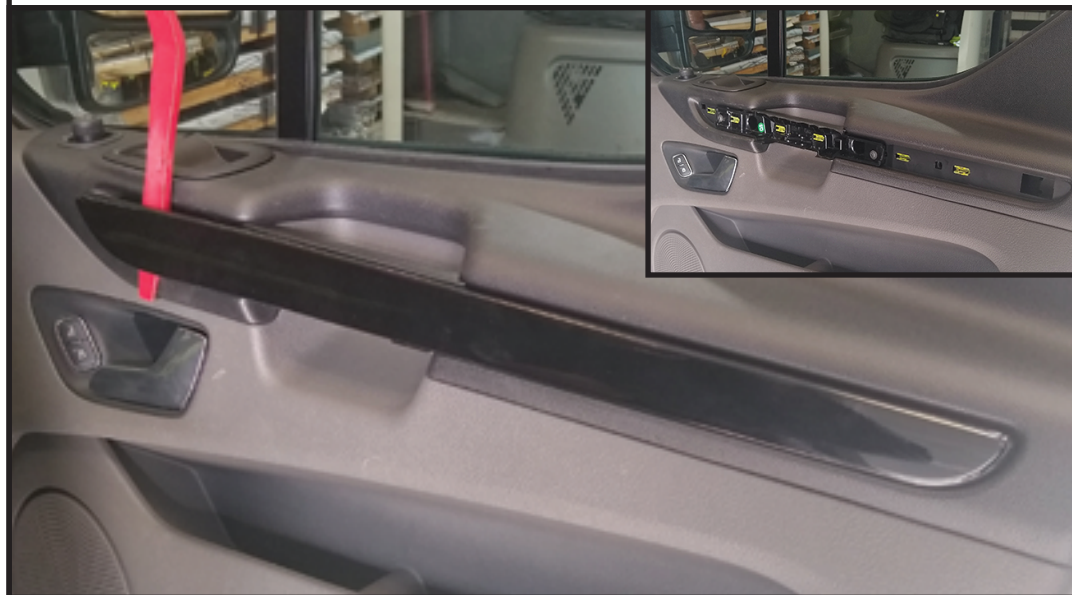
15 Go to page 12 for instructions on removing the vehicles existing lock and replacing it with the new one.



01 Carefully remove the plastic clip positioned on the bottom of the pull handle.



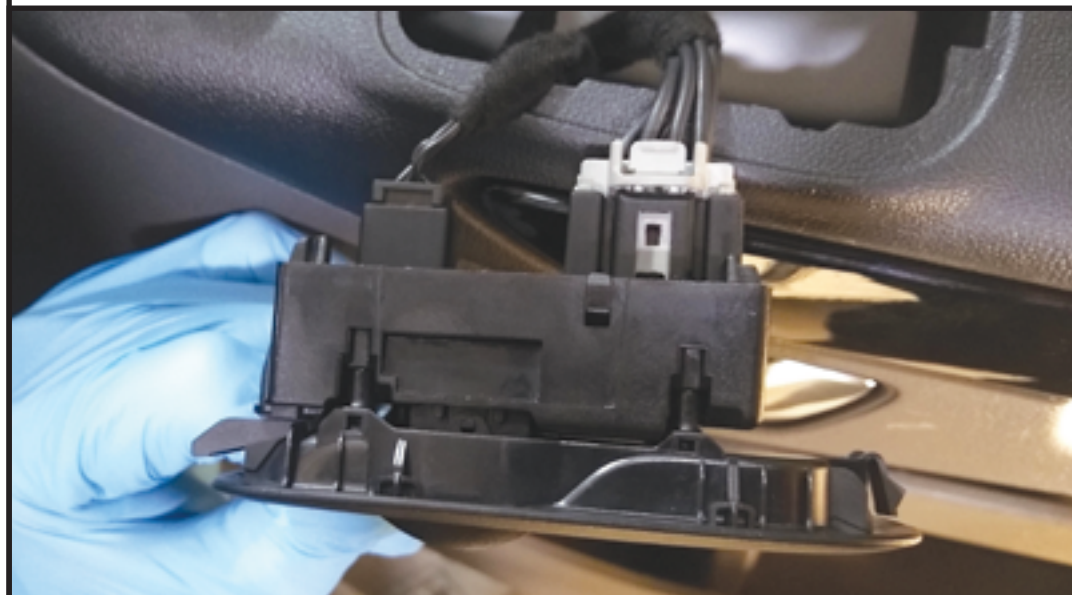
02 Carefully prise away, unclip and remove the plastic trim strip as shown.



03 Carefully lift the window switch control panel from its aperture.



04 Disconnect the plugs by pushing the tabs inwards and then remove the window switch.



05 Carefully remove the mirror control switch and disconnect the plug.



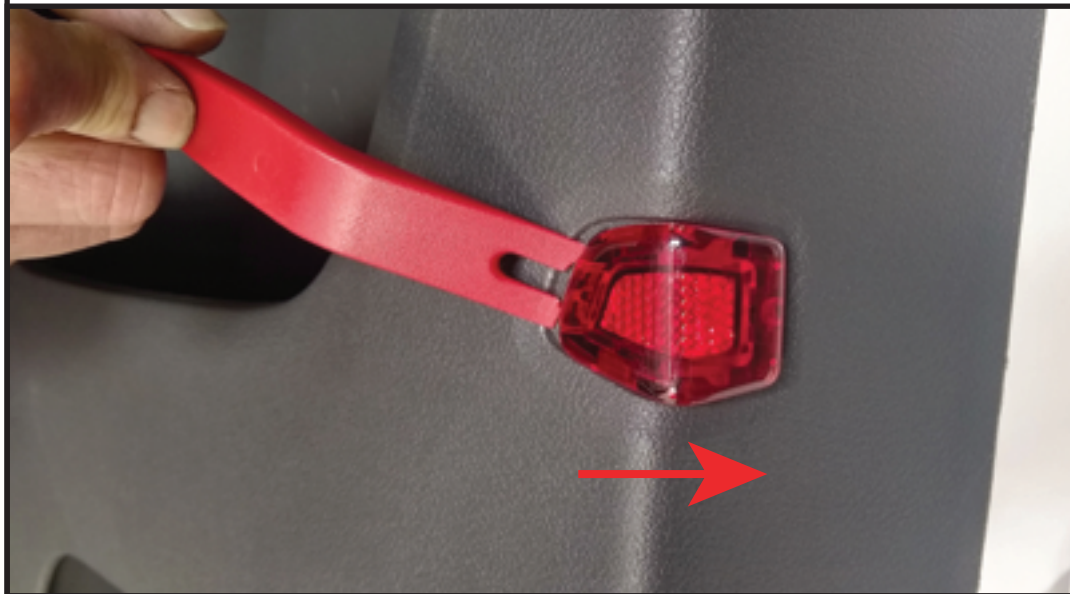
06 Carefully remove the plastic cover from behind the handle to reveal the T20 torx screw. Remove the screw.



07 Remove the plastic cover from the top side of the door panel to reveal the T20 torx screw. Remove the screw.



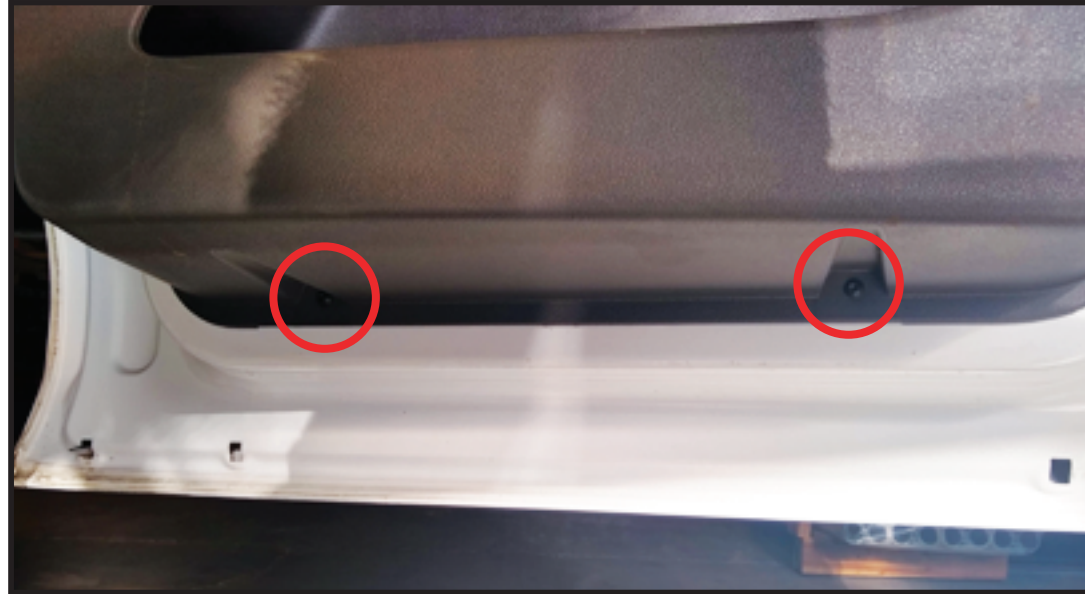
08 Carefully remove the reflector by sliding it in the direction shown (do not try and raise or lift) to reveal the T20 torx screw. Remove the screw.



09 Remove the plastic cover from the lower door pocket panel to reveal the T20 torx screw. Remove the screw.



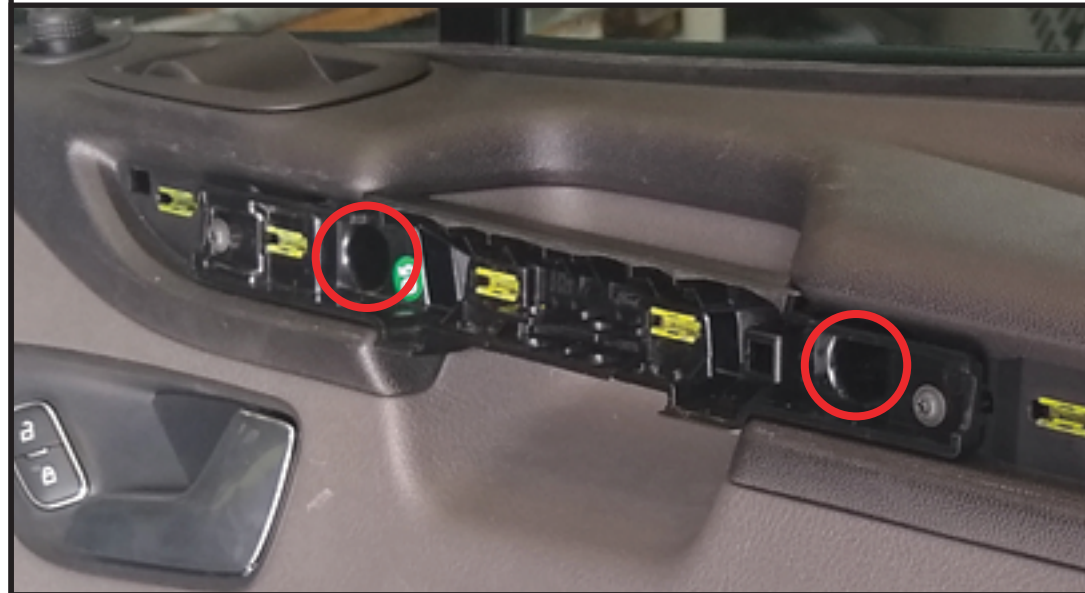
10 Remove the two T20 torx screws from the bottom of the door panel.



11 Remove the T20 torx screw from the aperture used by the window switch control panel.



12 Remove the two T20 torx screws from the locations shown below.



13 Carefully unclip the door panel starting in the lower right corner as shown.



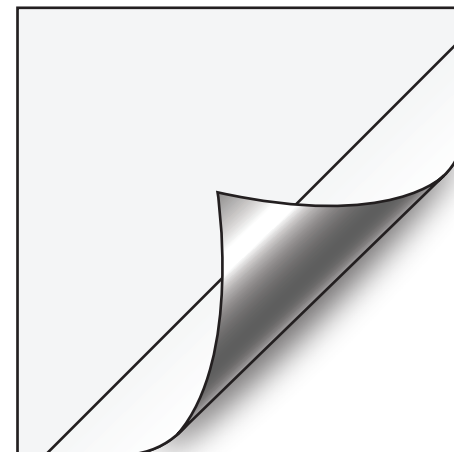
14 Remove the internal release handle cable which will allow you to fully remove the door panel.



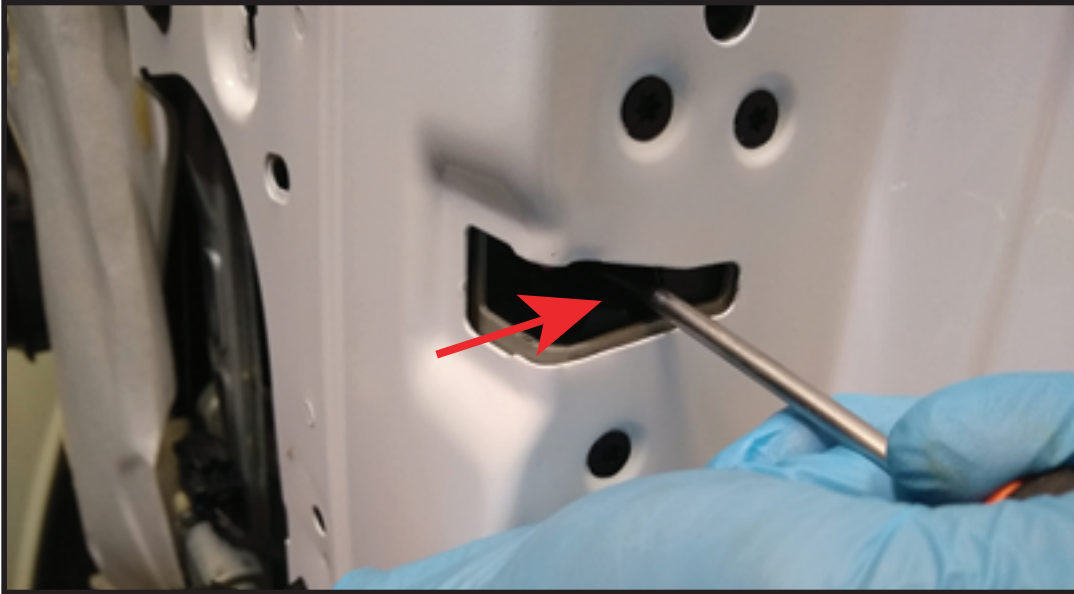
15 Carefully peel the liner away from the top right corner as shown.



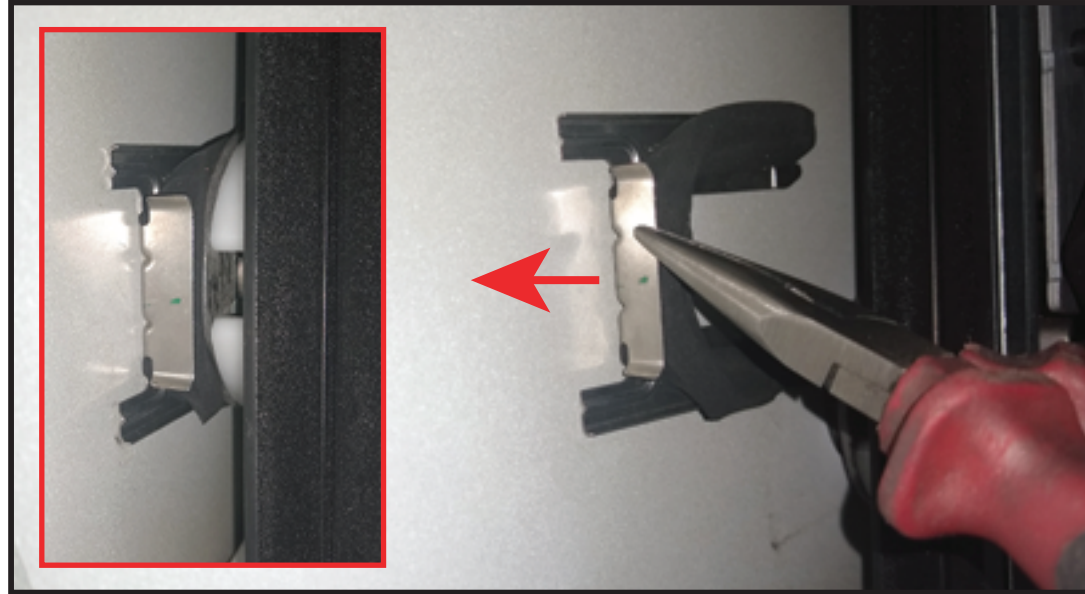
16 Go to the next page (page 12) for instructions on removing the vehicles existing lock and replacing it with the new one.



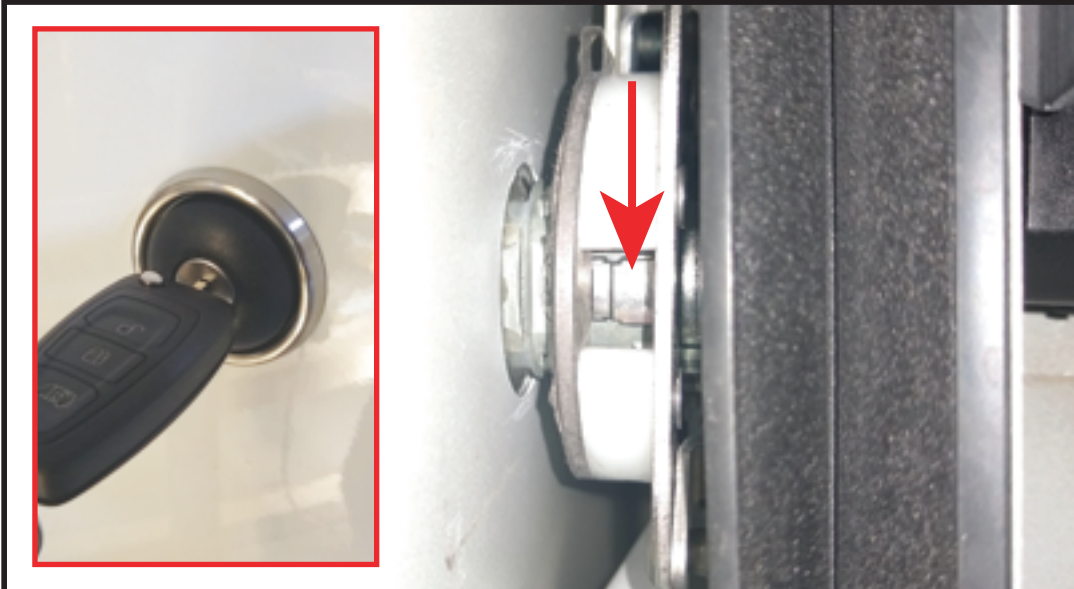
01 Manually push in the lever on the latch using a screwdriver or similar. **It is important to only push the latch in one click.**



02 Use a set of pliers to remove the retaining clip as shown.



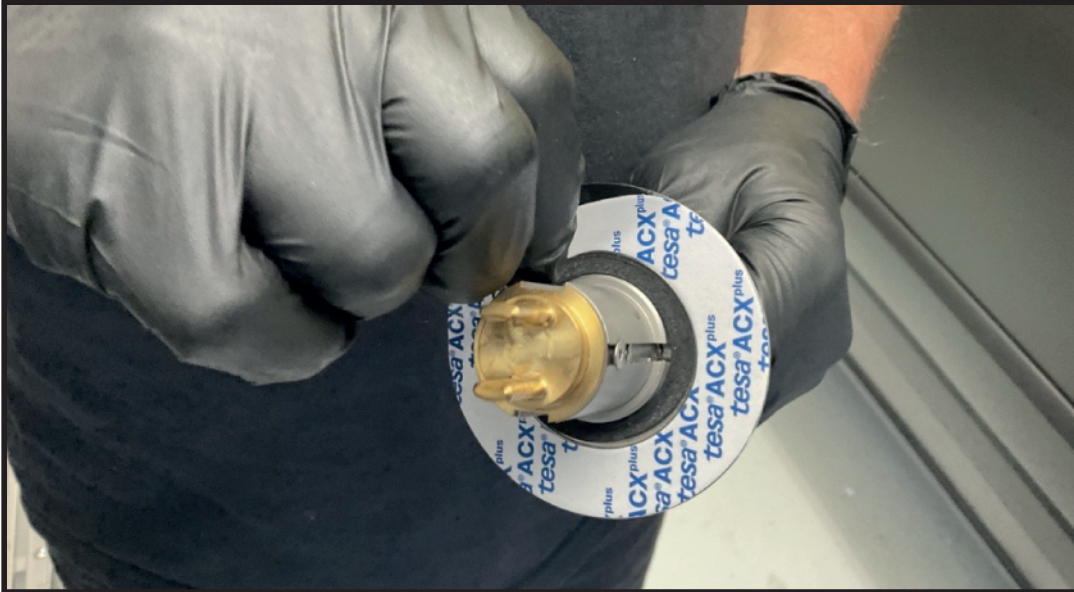
03 Insert the vehicles existing key into the cylinder and turn clockwise. Push the sprung loaded button in fully and with the button pushed in release the key. Regrip key and turn anti-clockwise which will allow you to remove the entire body from the door.



04 Clean any remaining residue from the door and prepare around the aperture by wiping with IPA wipes. Let this dry before commencing the next step.



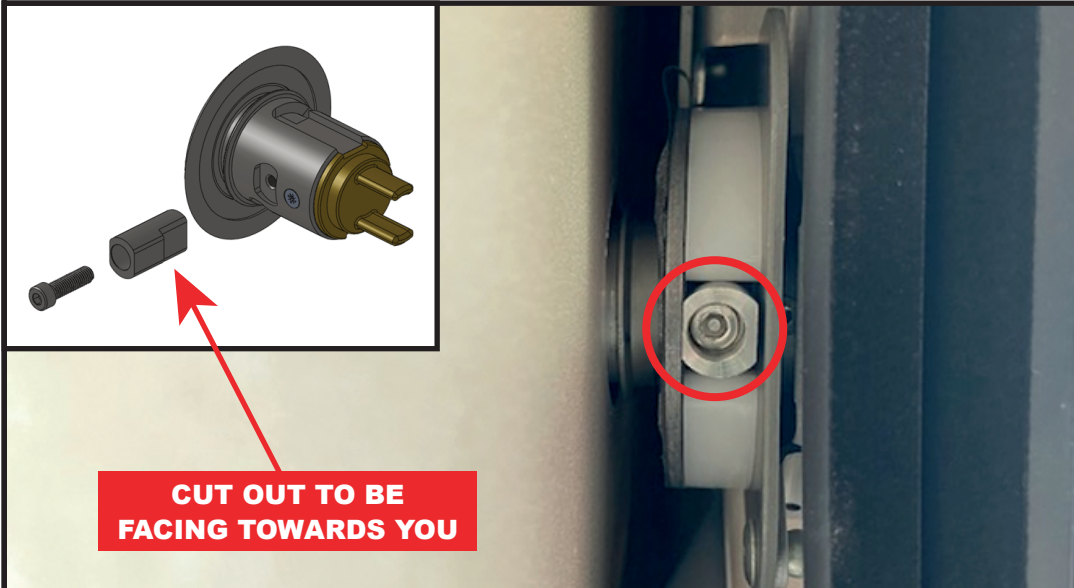
05 Position the replacement lock body into the bezel. Peel away the protective film from the back of the bezel and be cautious not to get any contaminants on the adhesive surface.



06 Insert the assembly into the original aperture locating the grooves on the body with the cut outs in the mechanism. Be cautious alignment is correct before sticking the assembly to the body. Apply pressure to the bezel to allow the adhesive backing to bond.



07 Secure the supplied anti rotation block to the replacement lock body through the gap shown using the supplied M4X16 socket screw (3mm allen key required).



08 Position the supplied retaining plate underneath the original retaining clip as shown in the image on the left and then slide both into position. The supplied retaining plate is fitted to increase rigidity around the bezel.

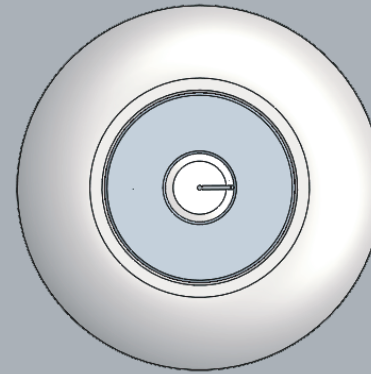


09 Keep the door open and test the operation of the lock (testing that both the lock and unlock function is working correctly). If happy with the operation of the lock refit the door panel in a reverse of the earlier steps.

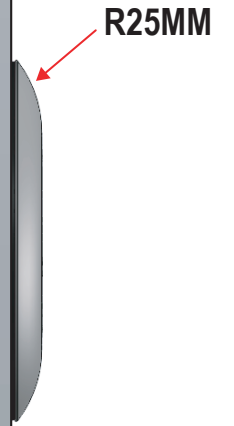


COMPLY TO UNECE REG 61 AND ITEM 49 OF THE IVA N1 INSPECTION MANUAL

FRONT VIEW



SIDE VIEW



Providing this lock kit is fitted as per instructions, this lock will comply to VCA Type Approval.

10 After fitting the replacement lock you may need to reset the window control switch. Do this by following the steps detailed below.

- > **Press and hold the downwards button to send the window to the bottom.**
- > **Press and hold the upwards button to send the window to the top.**
- > **When the window reaches the top, hold the up button for four seconds until you hear a 'click', this indicates that the window has been reset.**
- > **Installation is now complete.**



BEST FITTING MAINTENANCE

TREAT ALL BARE METAL with a manufacturer approved anti-corrosion compound.

LOCK MAINTENANCE

Regular maintenance of the locks should take place. Using a suitable lubricant will help keep the key and the lock mechanism working smoothly.

COMPLETED NOTE

Depending on the door, the completed lock cylinder and escutcheon may well protrude at an angle. This is normal.