

**IN9242**

**Handle Shield - Twin Rear Door**

**THANK YOU FOR PURCHASING A VAN GUARD HANDLE SHIELD**

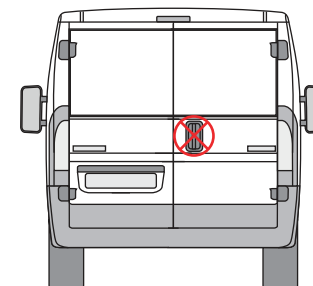
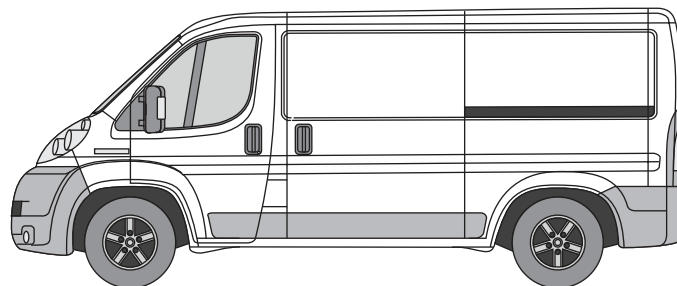
**SUITS THE FOLLOWING MODELS**

**Vehicle:**

Peugeot Boxer 2006 on  
Fiat Ducato 2006 on  
Citroen Relay 2006 on  
Vauxhall Movano 2022 on

**Door:**

Rear - Twin



⊗ Indicates approximate placement of shield

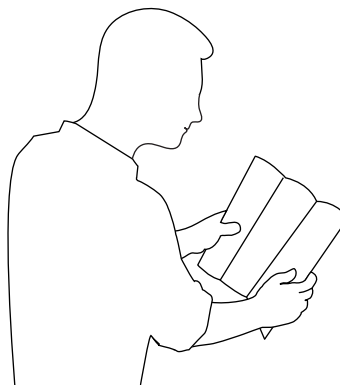


**CAUTION**

**PLEASE TAKE THE TIME TO READ THROUGH THE IMPORTANT INFORMATION BELOW BEFORE PROCEEDING TO FIT THIS PRODUCT**



**FAILURE TO TAKE NOTICE OF THE FOLLOWING INFORMATION MAY RESULT IN DAMAGE TO THE VEHICLE.**



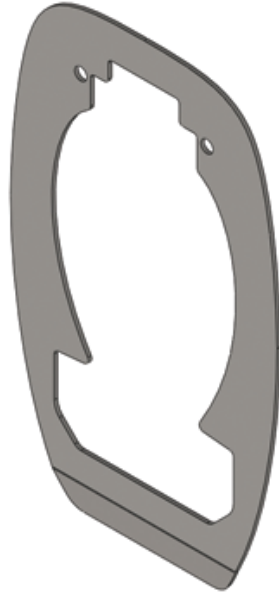
**Important:** Follow the instructions and all measurements carefully. Double check measurements before making any cuts. Drawings are for guidance only. Every effort has been made to ensure the accuracy of the instructions provided however Van Guard Accessories Ltd accepts no liability for any inaccuracies of either the drawings provided or vehicle variations. All bare metal should be treated with a manufacturer approved anti-corrosion compound and no liability is accepted for any incorrect installation or corrosion to body panels or within cavities. It is the sole responsibility of the installer to ensure the suitability of both the vehicle and of the supplied parts before installation is started. No liability is accepted for the fitting of the products.

This FITTING INSTRUCTION is the property of VAN GUARD ACCESSORIES LTD. and must not be used for manufacturing purposes, copied nor communicated in any way to third parties without written permission from VAN GUARD ACCESSORIES LTD.  
IN9242\_B (CN:00114)

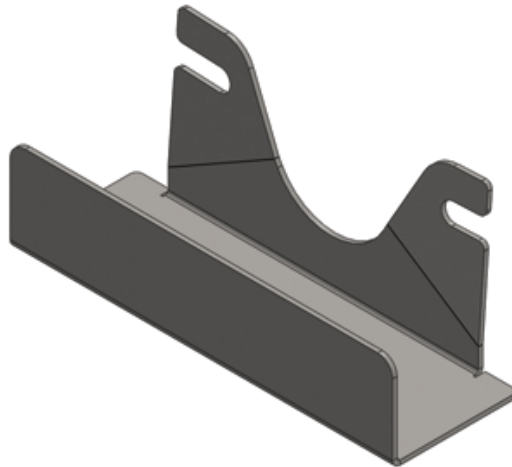
Van Guard Accessories Ltd  
Fair Oak Close, Exeter Airport Business Park,  
Exeter, Devon, EX5 2UL  
www.van-guard.co.uk

## SUPPLIED COMPONENTS

**ME3103 X1**  
(SHIELD)



**ME3104 X1**  
(INTERNAL SHIELD)



Wear the appropriate protective equipment (safety glasses & gloves) while fitting this product.



Dispose of packaging materials responsibly - Do not dispose until you have checked all parts and fixings are present.

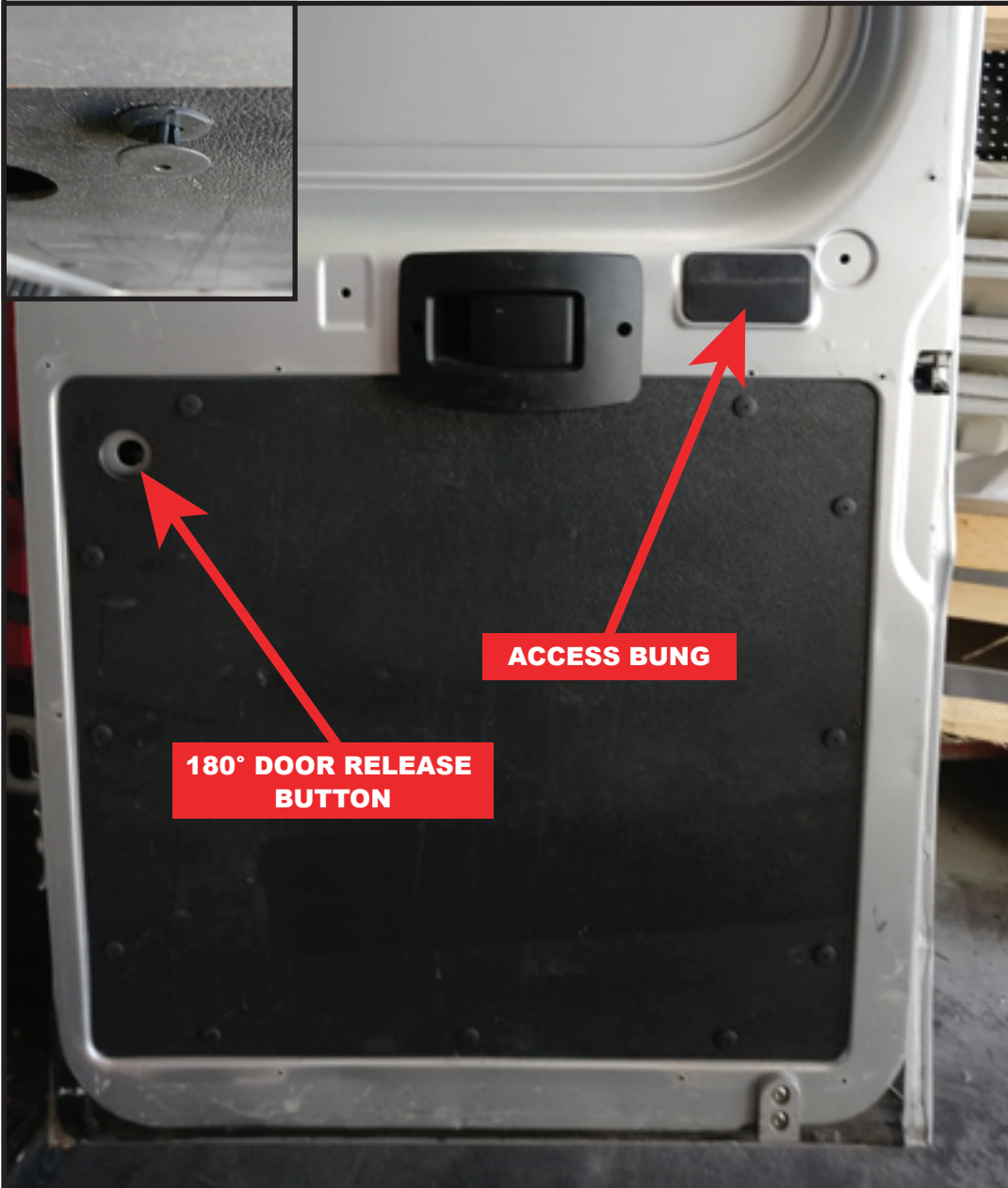
## FITTED IMAGE



## 1. REMOVAL OF THE DOOR PANEL

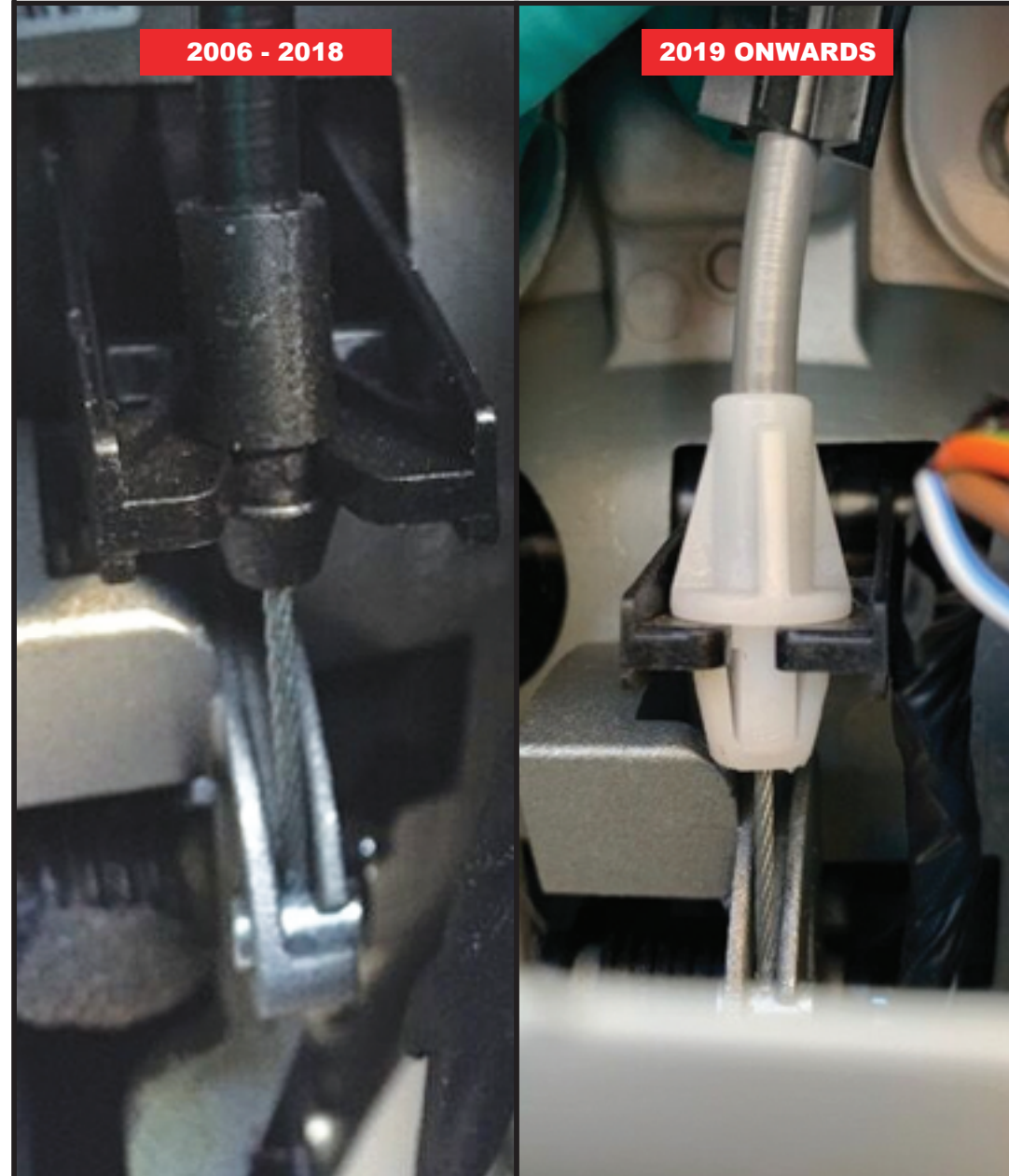
Leave the sliding door open while carrying out this installation.

Remove the door panel, the 180° door release button and the access bung. Retain all components for refitting at the end of the installation.



## 2.1. REMOVAL OF THE EXTERNAL HANDLE

Unclip the cable from the back of the external handle assembly. The design of the cable changed for 2019 onwards models as shown in the image below.



## 2.2. REMOVAL OF THE EXTERNAL HANDLE

Disconnect the latch rod from the handle. The other end of the rod stays connected.



## 2.3. REMOVAL OF THE EXTERNAL HANDLE

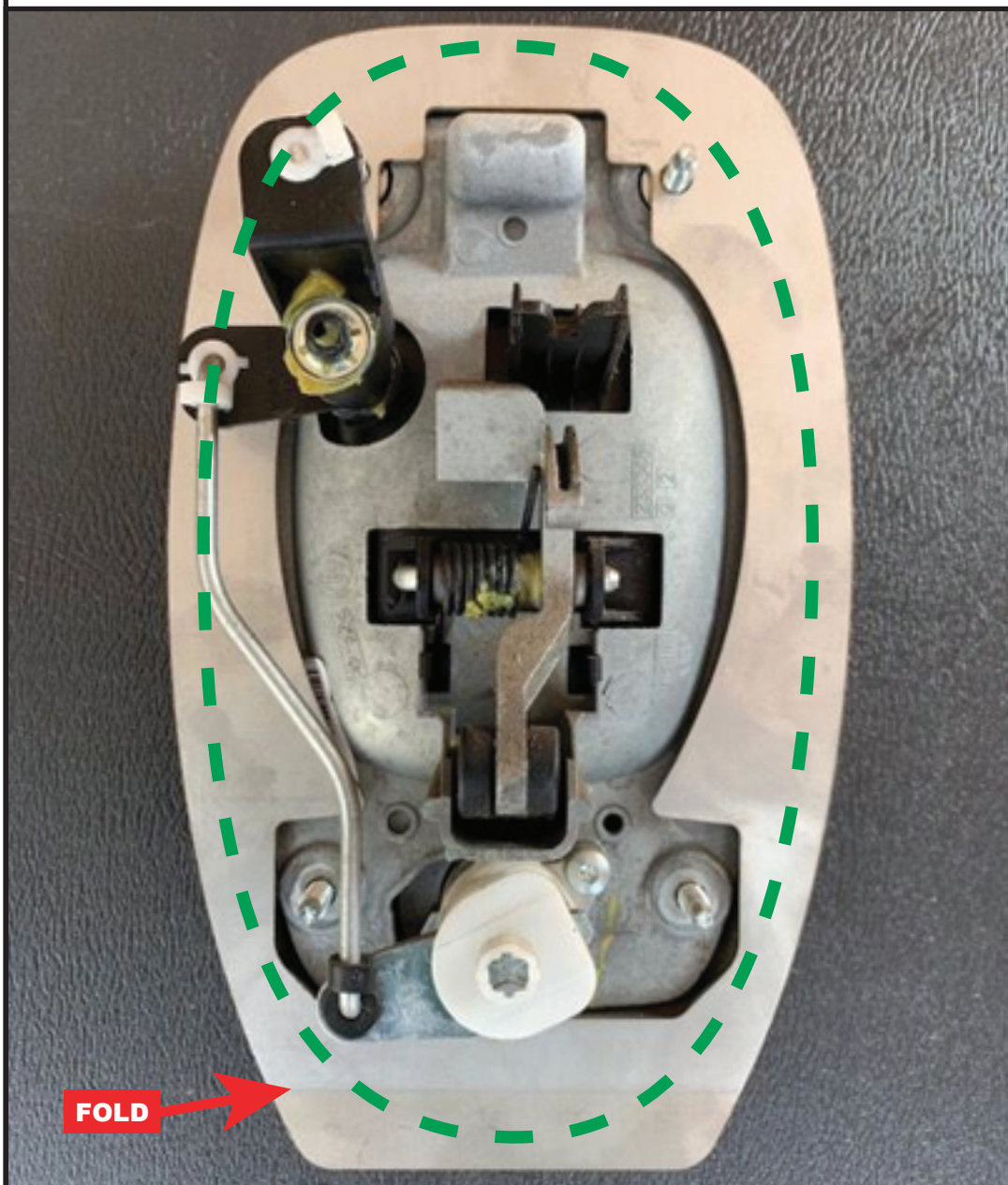
Undo the 4X nuts and remove the external handle assembly from the aperture.



### 3. POSITION SHIELD

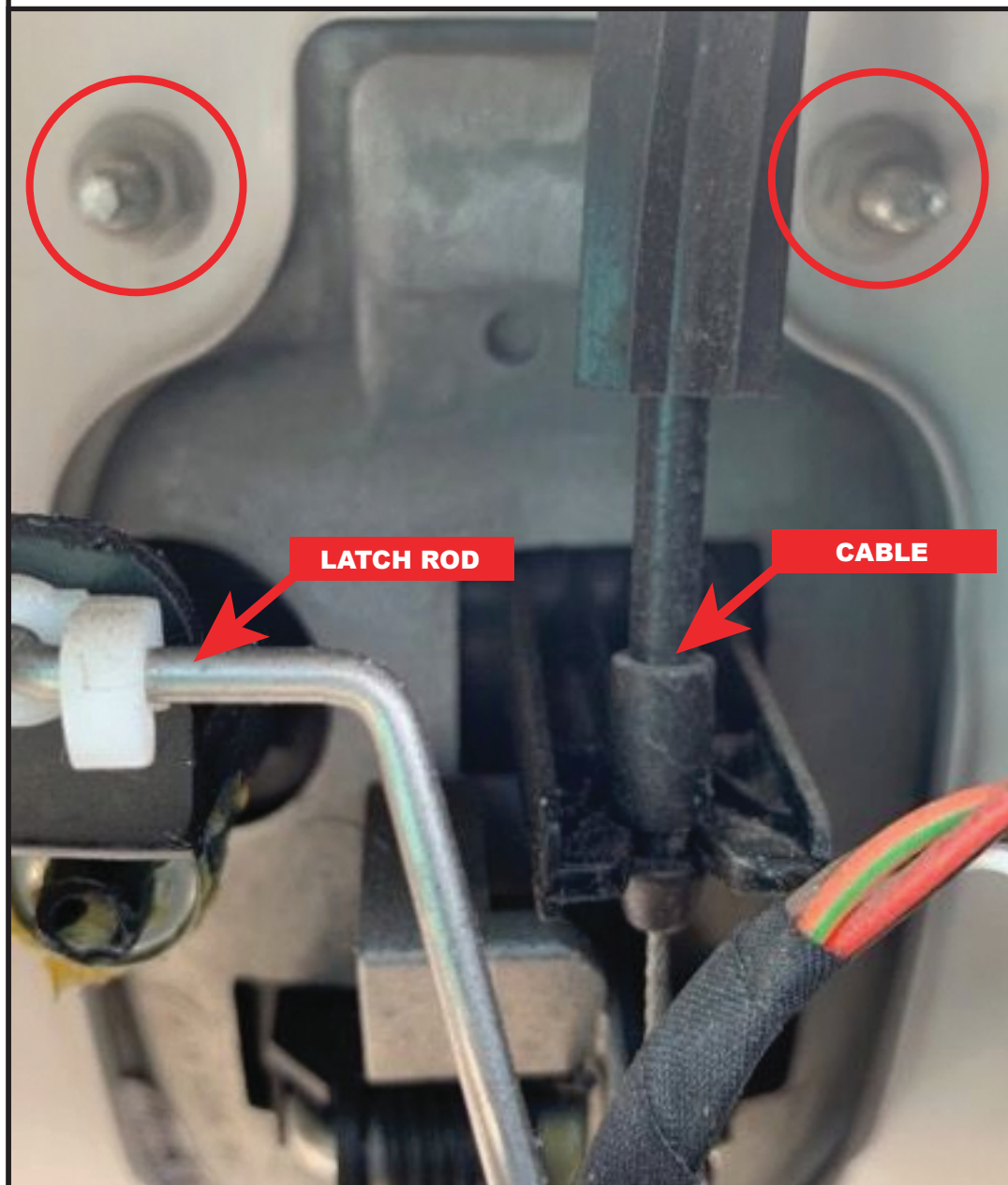
Position the supplied shield over the handle with the folded edge along the bottom facing up towards you (the fold follows the contour of the vehicles door panel).

Apply a bead of clear silicone sealer to the rear of the plate.



### 4. REFIT THE HANDLE

Place the handle into the aperture and then clip the cable back into the rear of the handle. Connect the latch rod back into place and then secure the top two nuts.



## 5. FITTING THE INTERNAL SHIELD

Place the supplied internal shield into position over the two studs and then secure the bottom two nuts.



## 6. REFITTING THE DOOR PANEL

Check that everything is operating correctly (including the internal release handle). Once the lock has been checked, refit the door panel, the 180° door release button and the access bung.



## 7. COMPLETING THE INSTALLATION

The completed handle shield looks like this.

