

IN9329

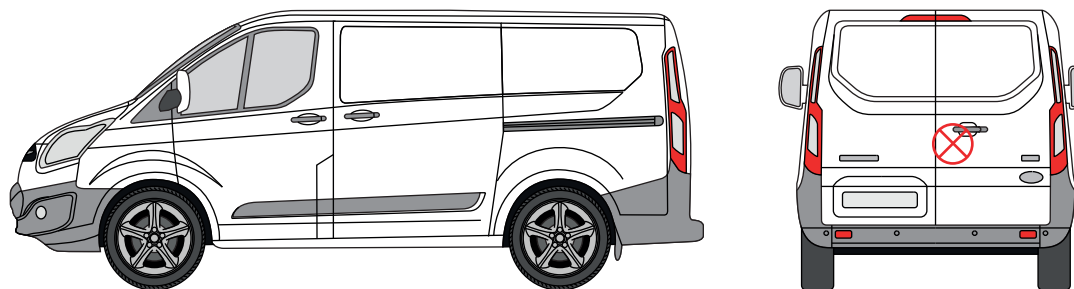
Internal Shield - Twin Rear Door

THANK YOU FOR PURCHASING A VAN GUARD INTERNAL SHIELD

SUITS THE FOLLOWING MODELS

Vehicle:
Ford Transit Custom 2013-2023

Door:
Rear - Twin



⊗ Indicates approximate placement of shield



CAUTION

PLEASE TAKE THE TIME TO READ THROUGH THE IMPORTANT INFORMATION BELOW BEFORE PROCEEDING TO FIT THIS PRODUCT



FAILURE TO TAKE NOTICE OF THE FOLLOWING INFORMATION MAY RESULT IN DAMAGE TO THE VEHICLE.



Important: Follow the instructions and all measurements carefully. Double check measurements before making any cuts. Drawings are for guidance only. Every effort has been made to ensure the accuracy of the instructions provided however Van Guard Accessories Ltd accepts no liability for any inaccuracies of either the drawings provided or vehicle variations. All bare metal should be treated with a manufacturer approved anti-corrosion compound and no liability is accepted for any incorrect installation or corrosion to body panels or within cavities. It is the sole responsibility of the installer to ensure the suitability of both the vehicle and of the supplied parts before installation is started. No liability is accepted for the fitting of the products.

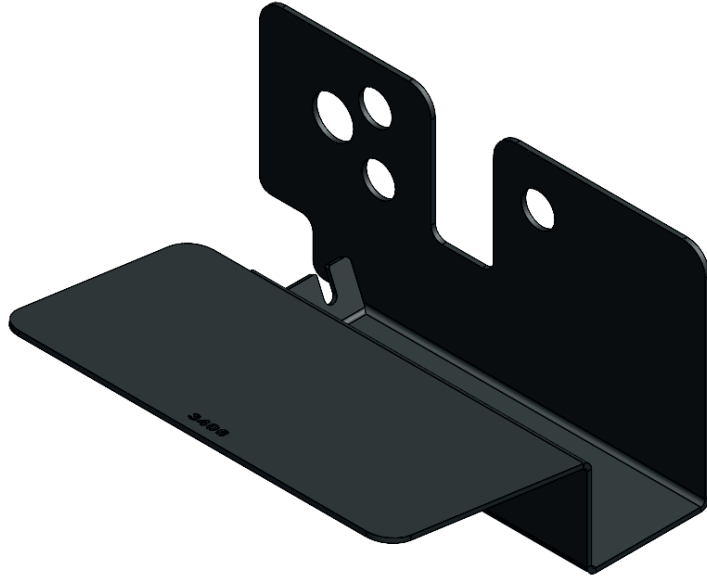
This FITTING INSTRUCTION is the property of VAN GUARD ACCESSORIES LTD. and must not be used for manufacturing purposes, copied nor communicated in any way to third parties without written permission from VAN GUARD ACCESSORIES LTD.

IN9329_B (CN:00124)

Van Guard Accessories Ltd
Fair Oak Close, Exeter Airport Business Park,
Exeter, Devon, EX5 2UL
www.van-guard.co.uk

SUPPLIED COMPONENTS

ME3406 X1
(SHIELD)



FX4244 X3
(M6X20 COUNTERSUNK SCREW)
T30 TORX



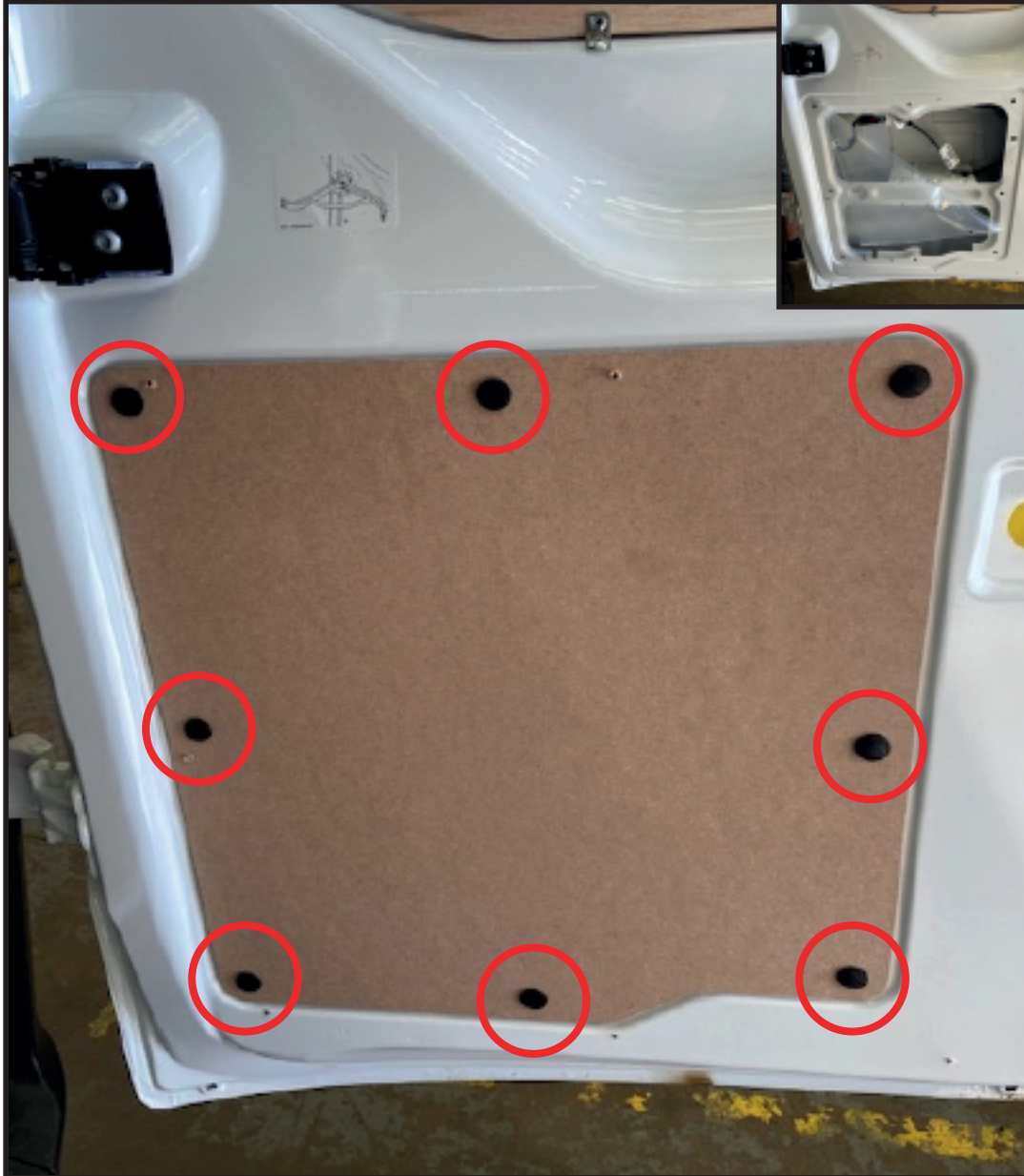
Wear the appropriate protective equipment (safety glasses & gloves) while fitting this product.



Dispose of packaging materials responsibly - Do not dispose until you have checked all parts and fixings are present.

1. REMOVAL OF DOOR CARD

Take off the inner door card by firstly removing the 9 plastic clips securing the card, and peel back the inner plastic lining to gain access to the door cavity.



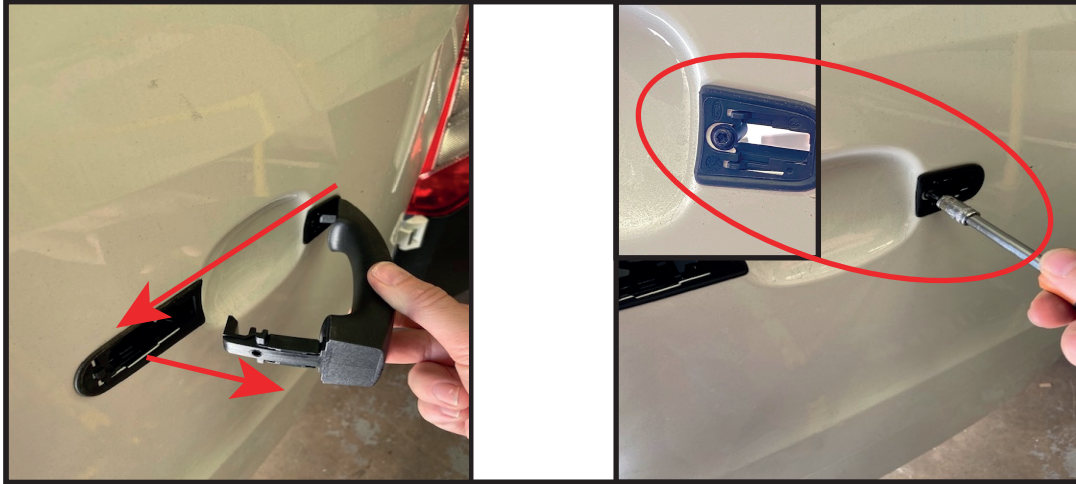
2.1. EXTERNAL HANDLE REMOVAL

Remove the plastic cover/cap on the rear edge of the door to gain access to the T20 Torx head handle retaining screw. Note: This screw does not fully withdraw from the inner handle carrier. Loosen this screw until the small exterior handle section can be removed.



2.2. EXTERNAL HANDLE REMOVAL

Slide the handle towards the door latch and unclip the front end outward to remove from the door. Remove the T25 Torx head screw from the outer door skin side to release the inner door handle carrier, and unclip from door.



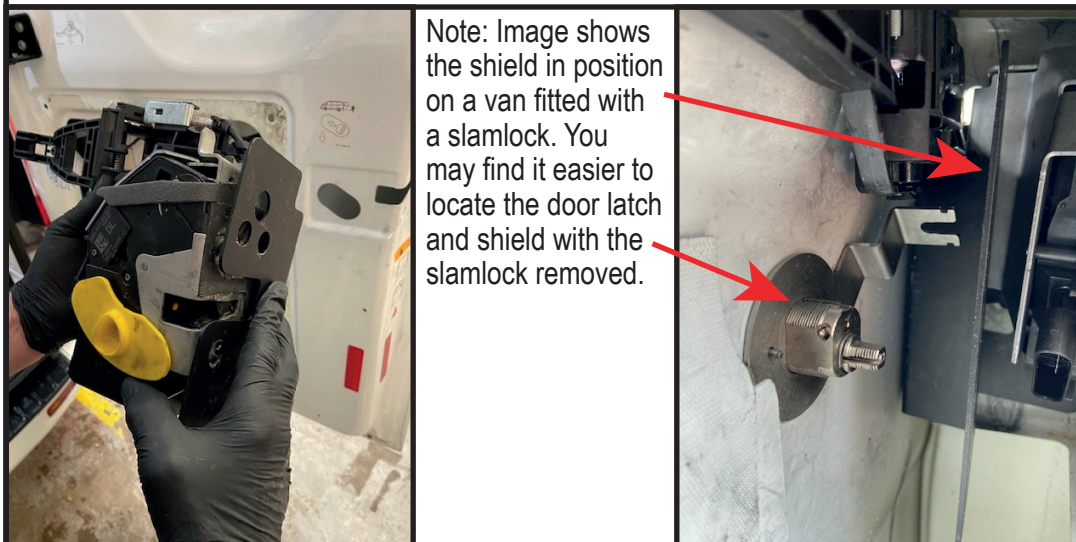
3. REMOVAL OF DOOR LATCH

Remove the three T30 Torx head screws from the rear edge of the door skin and remove both the internal handle carrier and the door latch from the door cavity. Note: The central locking will need to be unplugged to fully remove from the door cavity.



4. FITMENT OF SHIELD

Holding the shield around the latch, relocate the latch into position within the door cavity and secure using the three T30 x 20mm Torx head screws provided with the shield.



5. REFITTING HANDLE

Once the latch is secured, relocate the internal handle carrier, ensuring it is clipped to the outer door skin and held in place with the T25 Torx head screw detailed in point 2.2.

Refit the door handle and secure into place via the T20 Torx head screw, accessed through the aperture in the end of the door, as detailed in point 2.1.

Check the door closes and reopens smoothly, before refitting the internal trim panel.