

IN9347

Handle Shield - Cab Door

THANK YOU FOR PURCHASING A VAN GUARD HANDLE SHIELD

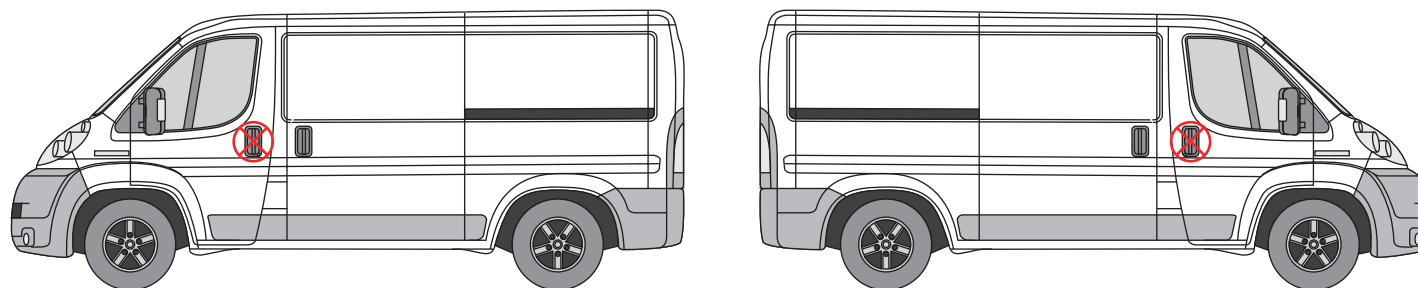
SUITS THE FOLLOWING MODELS

Vehicle:

Peugeot Boxer 2006 on
Fiat Ducato 2006 on
Citroen Relay 2006 on
Vauxhall Movano 2022 on

Door:

Cab - Driver's / Passenger's



⊗ Indicates approximate placement of shield



CAUTION

PLEASE TAKE THE TIME TO READ THROUGH THE IMPORTANT INFORMATION BELOW BEFORE PROCEEDING TO FIT THIS PRODUCT



FAILURE TO TAKE NOTICE OF THE FOLLOWING INFORMATION MAY RESULT IN DAMAGE TO THE VEHICLE.



Important: Follow the instructions and all measurements carefully. Double check measurements before making any cuts. Drawings are for guidance only. Every effort has been made to ensure the accuracy of the instructions provided however Van Guard Accessories Ltd accepts no liability for any inaccuracies of either the drawings provided or vehicle variations. All bare metal should be treated with a manufacturer approved anti-corrosion compound and no liability is accepted for any incorrect installation or corrosion to body panels or within cavities. It is the sole responsibility of the installer to ensure the suitability of both the vehicle and of the supplied parts before installation is started. No liability is accepted for the fitting of the products.

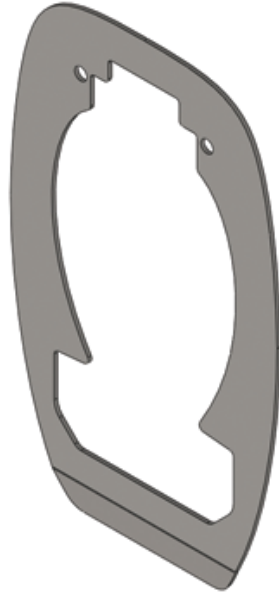
This FITTING INSTRUCTION is the property of VAN GUARD ACCESSORIES LTD. and must not be used for manufacturing purposes, copied nor communicated in any way to third parties without written permission from VAN GUARD ACCESSORIES LTD.

IN9347_B (CN:00114)

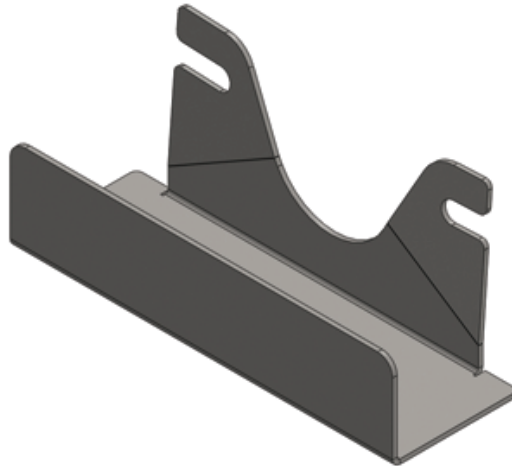
Van Guard Accessories Ltd
Fair Oak Close, Exeter Airport Business Park,
Exeter, Devon, EX5 2UL
www.van-guard.co.uk

SUPPLIED COMPONENTS

ME3103 X1
(SHIELD)



ME3104 X1
(INTERNAL SHIELD)



Wear the appropriate protective equipment (safety glasses & gloves) while fitting this product.



Dispose of packaging materials responsibly - Do not dispose until you have checked all parts and fixings are present.

FITTED IMAGE



1. REMOVAL OF DOOR PANEL

Unclip window switches and unplug.

1



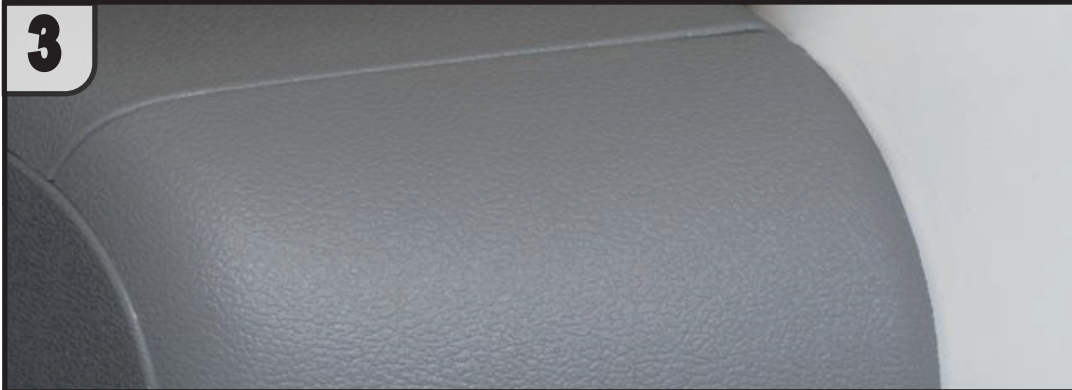
Undo T35 torx bolt.

2



Pop off end cap.

3



Undo T35 torx bolt.

4



Pop off door release cap.

5



Undo 2x T35 torx bolts.

6



REMOVAL OF DOOR PANEL CONTINUED

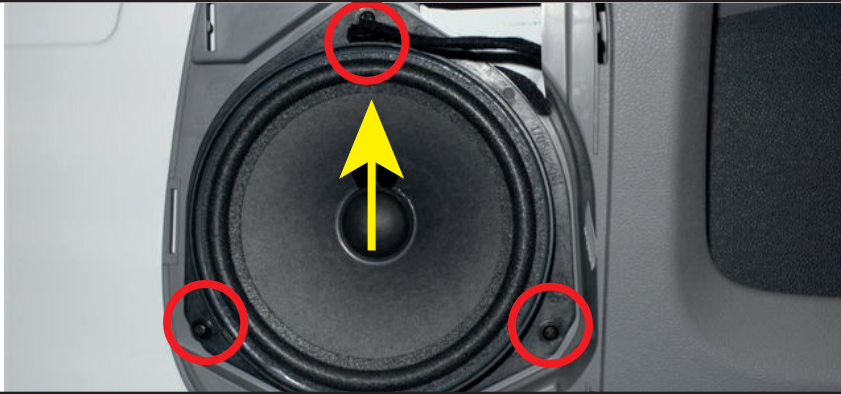
Pop off speaker grill (from the bottom first).

7



Un-plug the speaker cable and then remove 3X philips screws and then speaker.

8



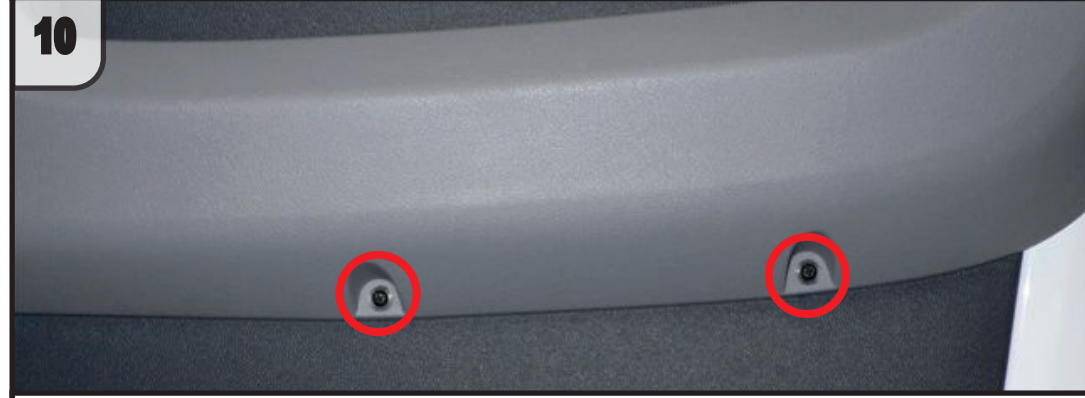
Remove 4x T25 torx bolts and remove door pocket.

9



Remove 2x T20 Torx bolts from bottom of door trim.

10



Un-clip the door release inner cable from the green clip and then unclip the outer cable and slide off the door trim.

11



Remove the door card.

12



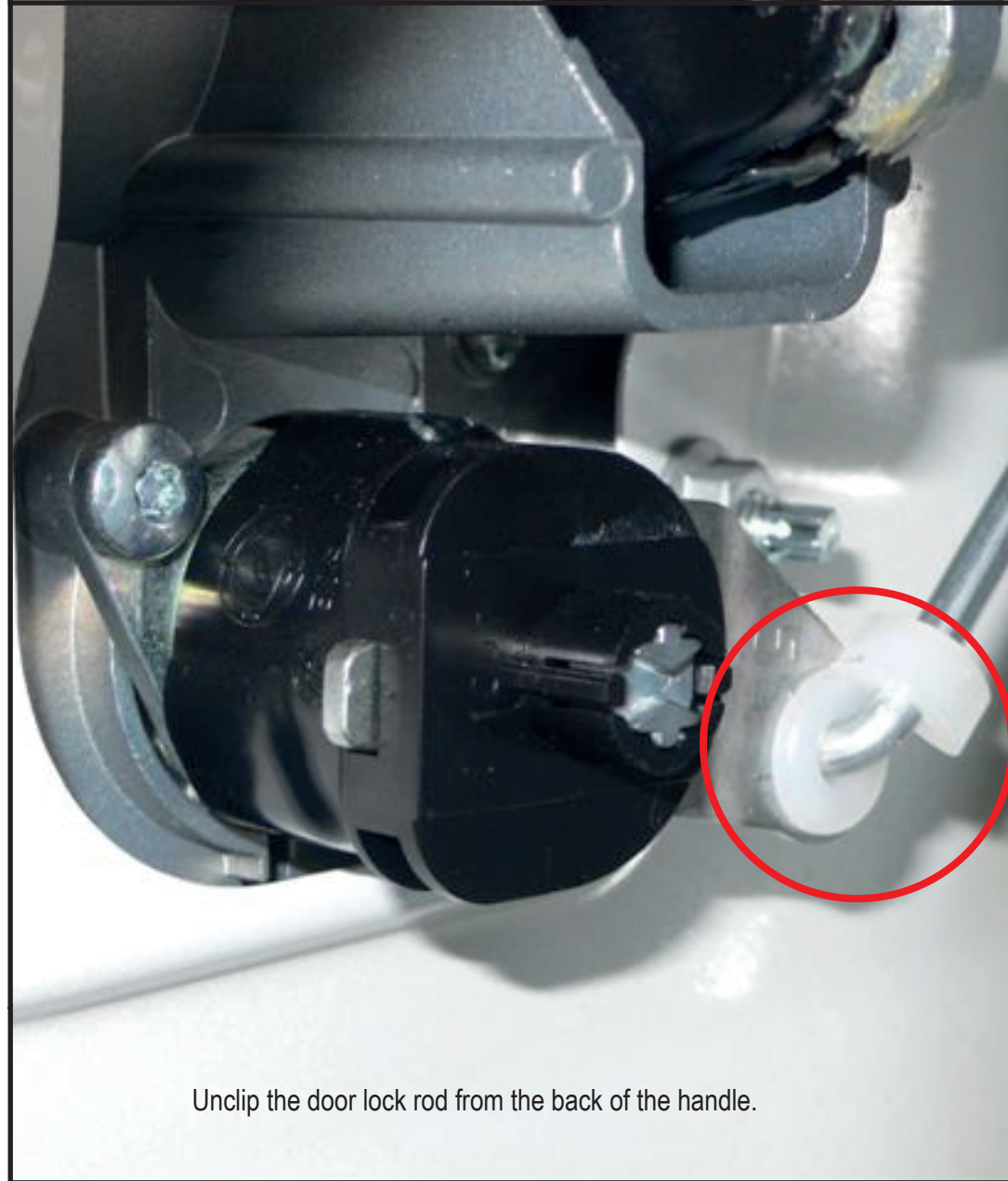
2. GAINING ACCESS INTO THE DOOR

Cut out door membrane (foam) as shown to allow access into the door.
Pop off grommet to allow access to door handle bolt. ●
Remove 10mm bolt from window runner and unhook window runner. ●



3. REMOVAL OF LOCKING CABLE

Unclip the door lock rod from the back of the handle.
Remove 3x 10mm nuts from the handle and then remove the handle.
Un-clip the door release cable from the handle.



Unclip the door lock rod from the back of the handle.

4. POSITION SHIELD

Position the supplied shield over the handle with the folded edge along the bottom facing up towards you (the fold follows the contour of the vehicles door panel). Apply a bead of clear silicone sealer to the rear of the plate. Refit the door release cable to the handle.



5. FITTING THE INTERNAL SHIELD

Place the handle back into the aperture and secure the top nut. Place the supplied internal shield into position over the bottom two studs and then secure the bottom two nuts. Refit the door lock rod to the back of the handle.



6. COMPLETING THE INSTALLATION

Refit the door panel in a reverse of the earlier steps. The completed handle shield looks like this.

