

IN9433

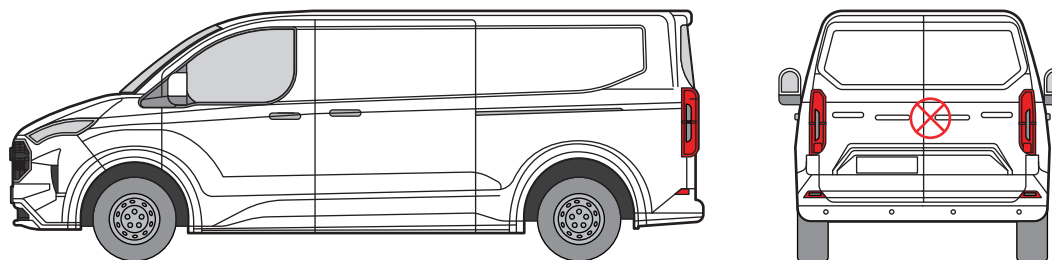
External Handle Shield - Twin Rear Door

THANK YOU FOR PURCHASING A VAN GUARD EXTERNAL HANDLE SHIELD

SUITS THE FOLLOWING MODELS

Vehicle:
Ford Transit Custom 2023-
Volkswagen Transporter T7 2025-

Door:
Rear - Twin



⊗ Indicates approximate placement of shield



CAUTION

PLEASE TAKE THE TIME TO READ THROUGH THE IMPORTANT INFORMATION BELOW BEFORE PROCEEDING TO FIT THIS PRODUCT



FAILURE TO TAKE NOTICE OF THE FOLLOWING INFORMATION MAY RESULT IN DAMAGE TO THE VEHICLE.



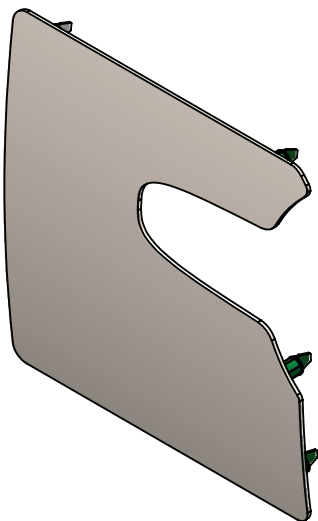
Important: Follow the instructions and all measurements carefully. Double check measurements before making any cuts. Drawings are for guidance only. Every effort has been made to ensure the accuracy of the instructions provided however Van Guard Accessories Ltd accepts no liability for any inaccuracies of either the drawings provided or vehicle variations. All bare metal should be treated with a manufacturer approved anti-corrosion compound and no liability is accepted for any incorrect installation or corrosion to body panels or within cavities. It is the sole responsibility of the installer to ensure the suitability of both the vehicle and of the supplied parts before installation is started. No liability is accepted for the fitting of the products.

This FITTING INSTRUCTION is the property of VAN GUARD ACCESSORIES LTD. and must not be used for manufacturing purposes, copied nor communicated in any way to third parties without written permission from VAN GUARD ACCESSORIES LTD.
IN9433_B (CN:01219)

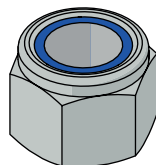
Van Guard Accessories Ltd
Fair Oak Close, Exeter Airport Business Park,
Exeter, Devon, EX5 2UL
www.van-guard.co.uk

SUPPLIED COMPONENTS

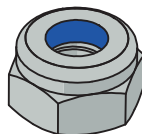
AS3754 X1
(SHIELD)



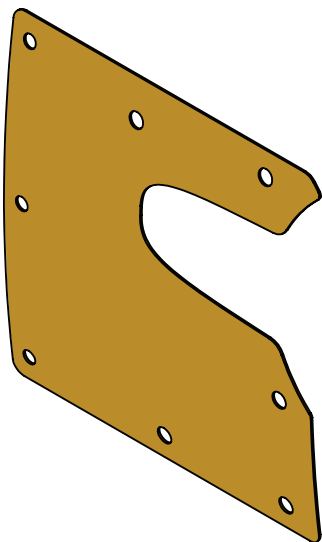
FX4004 X5
(M6 NYLOC)



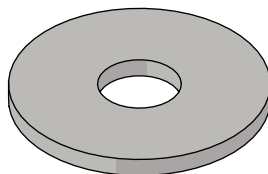
FX4304 X3
(M5 NYLOC)



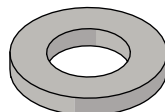
MA6192 X1
(RUBBER GASKET)



FX4013 X5
(M6 WASHER - LARGE)



FX4017 X3
(M6 WASHER - SMALL)



Wear the appropriate protective equipment (safety glasses & gloves) while fitting this product.



Dispose of packaging materials responsibly - Do not dispose until you have checked all parts and fixings are present.

FITTED IMAGE



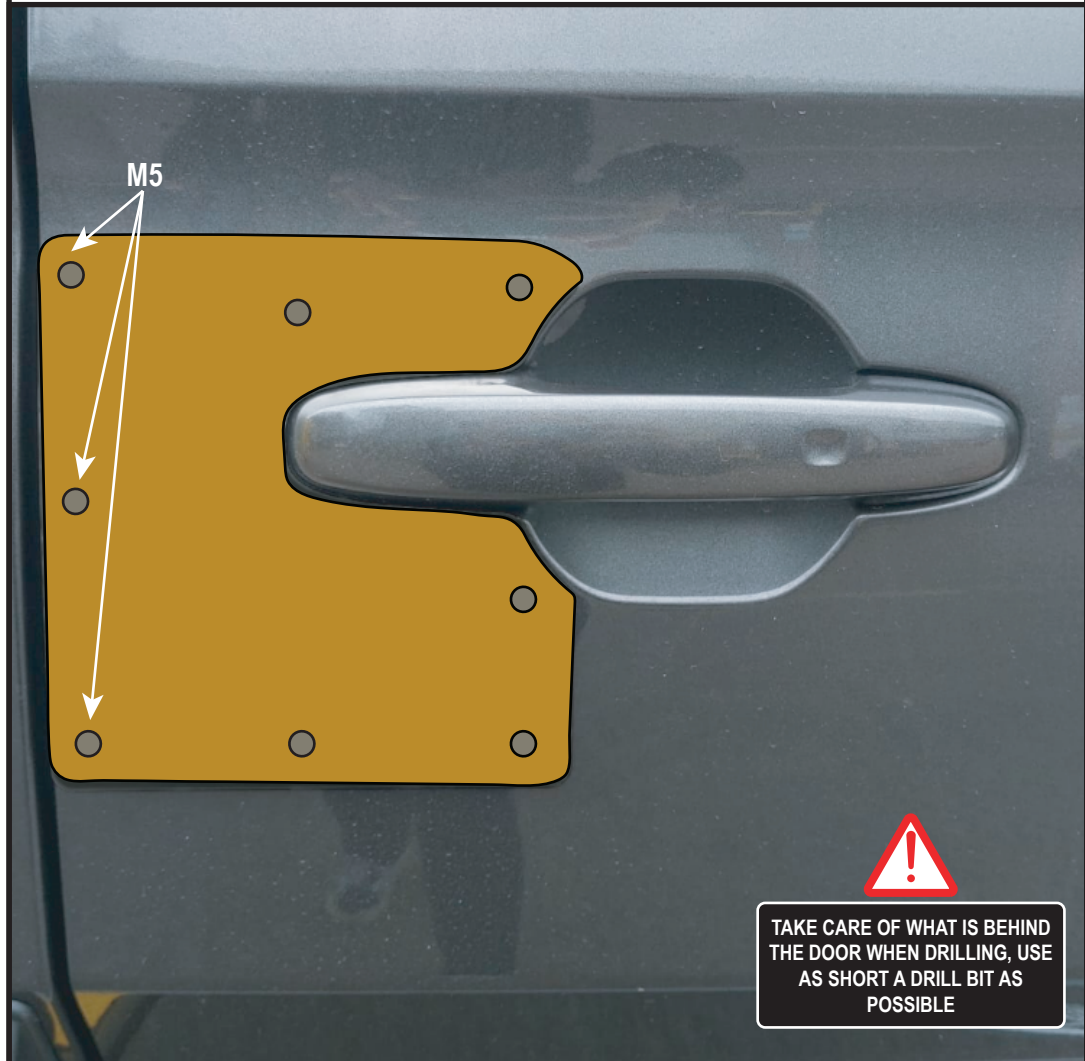
1. REMOVAL OF THE DOOR PANEL

Remove door panel by removing the panel clips, to remove clips pull out the centres. Peel back the plastic membrane to allow access to the door cavity.



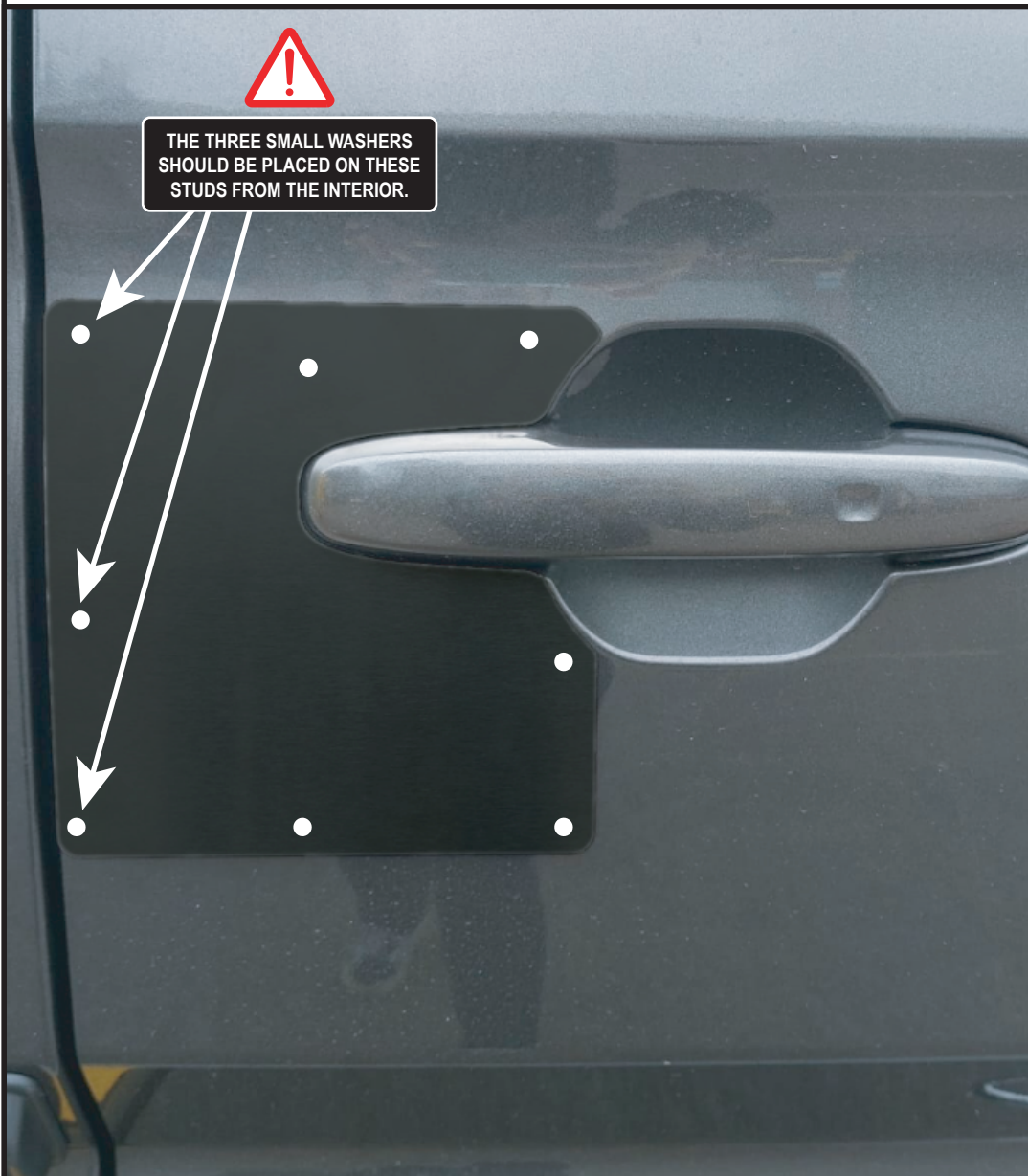
2. POSITIONING THE SHIELD

1. Protect the area of the door where the shield will be fitted with masking tape.
2. Use the rubber gasket as a template to mark the hole positions. Make sure the gasket is orientated correctly with the yellow backing facing you. The rubber gasket is profiled 1.5mm smaller than the shield so it needs to be offset 1.5mm from the handle.
3. Mark down the eight hole centres.
4. **With the door open**, carefully drill the fixings holes, using a 4mm pilot then opening to 8mm for the 6 x M6 holes and 7mm for the 4 x M5 holes. Remove any swarf and treat bare metal with anti-corrosion spray.



3. RUBBER GASKET & WASHER SIZES

1. Stick the rubber gasket to the outer shield and then place the shield in position.
2. Place the three small washers over the studs highlighted below from the interior of the vehicle.
3. Place the five large washers over the remaining studs from the interior of the vehicle.



4. SECURING THE SHIELD

Secure in place with the 3 x M5 nyloc nuts on the edge of the door and the 5 x M6 nyloc nuts on the remaining studs. **Take care not to overtighten the nuts.** Once fitted, refit the door panel.

