



IN9453

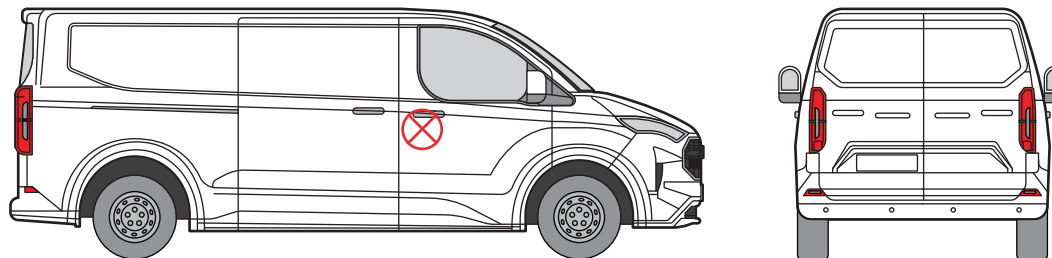
Driver Lock Shield - Cab Door

THANK YOU FOR PURCHASING A VAN GUARD DRIVER LOCK SHIELD

SUITS THE FOLLOWING MODELS

Vehicle:
Ford Transit Custom 2023 on

Door:
Cab - Driver's



 Indicates approximate placement of lock



CAUTION

PLEASE TAKE THE TIME TO READ THROUGH THE IMPORTANT INFORMATION BELOW BEFORE PROCEEDING TO FIT THIS PRODUCT



FAILURE TO TAKE NOTICE OF THE FOLLOWING INFORMATION MAY RESULT IN DAMAGE TO THE VEHICLE.



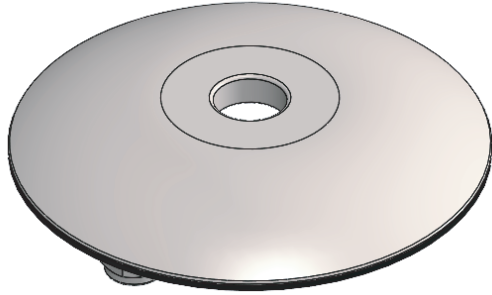
Important: Follow the instructions and all measurements carefully. Double check measurements before making any cuts. Drawings are for guidance only. Every effort has been made to ensure the accuracy of the instructions provided however Van Guard Accessories Ltd accepts no liability for any inaccuracies of either the drawings provided or vehicle variations. All bare metal should be treated with a manufacturer approved anti-corrosion compound and no liability is accepted for any incorrect installation or corrosion to body panels or within cavities. It is the sole responsibility of the installer to ensure the suitability of both the vehicle and of the supplied parts before installation is started. No liability is accepted for the fitting of the products.

This FITTING INSTRUCTION is the property of VAN GUARD ACCESSORIES LTD. and must not be used for manufacturing purposes, copied nor communicated in any way to third parties without written permission from VAN GUARD ACCESSORIES LTD.
IN9453_A (CN:NR)

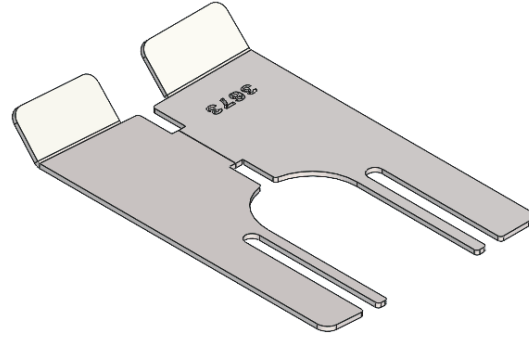
Van Guard Accessories Ltd
Fair Oak Close, Exeter Airport Business Park,
Exeter, Devon, EX5 2JL
www.van-guard.co.uk

SUPPLIED COMPONENTS

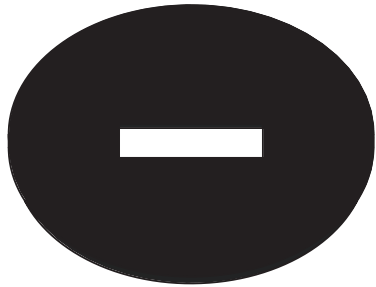
KT5811 X1
(SECURITY BEZEL)



ME3673 X1
(LOCK KEY - PLATE)



AS3807 X1
(ANTI-DRILL PLATE)



Wear the appropriate protective equipment (safety glasses & gloves) while fitting this product.



Dispose of packaging materials responsibly - Do not dispose until you have checked all parts and fixings are present.

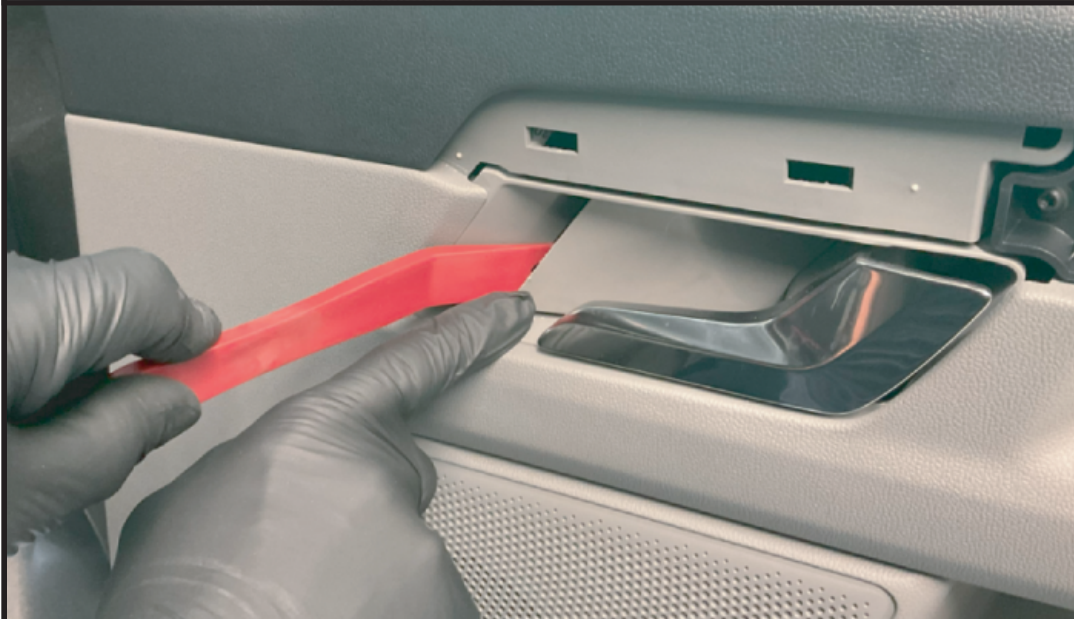
FITTED IMAGE



1.1. REMOVAL OF THE DOOR TRIM

Use a plastic trim removal tool to carefully remove the first panel trims, as shown in images.

Note: The panel will be refitted at the end of the installation.



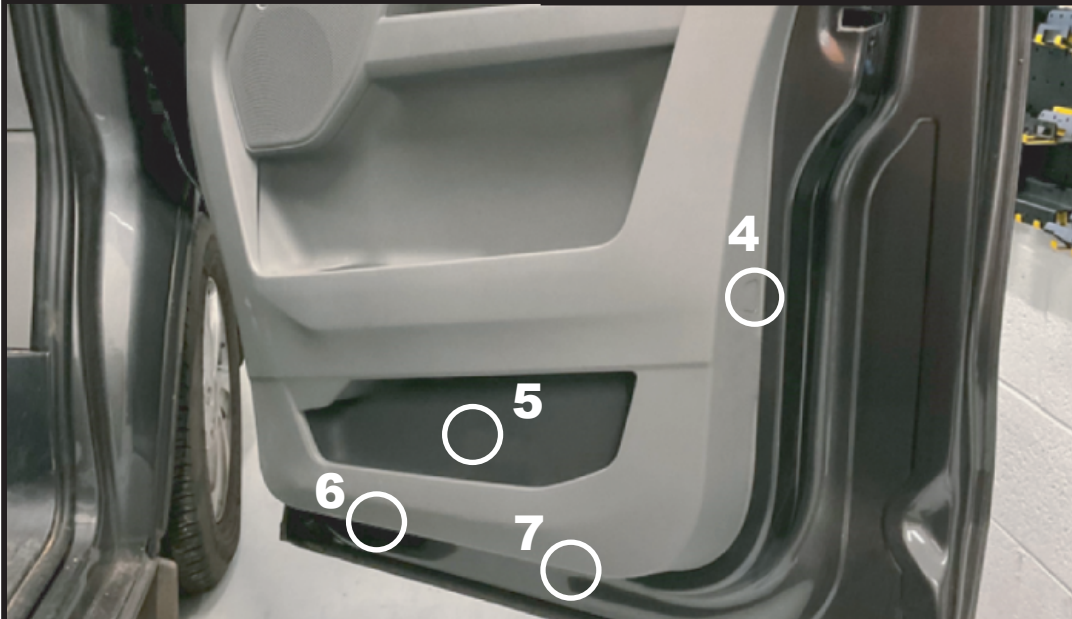
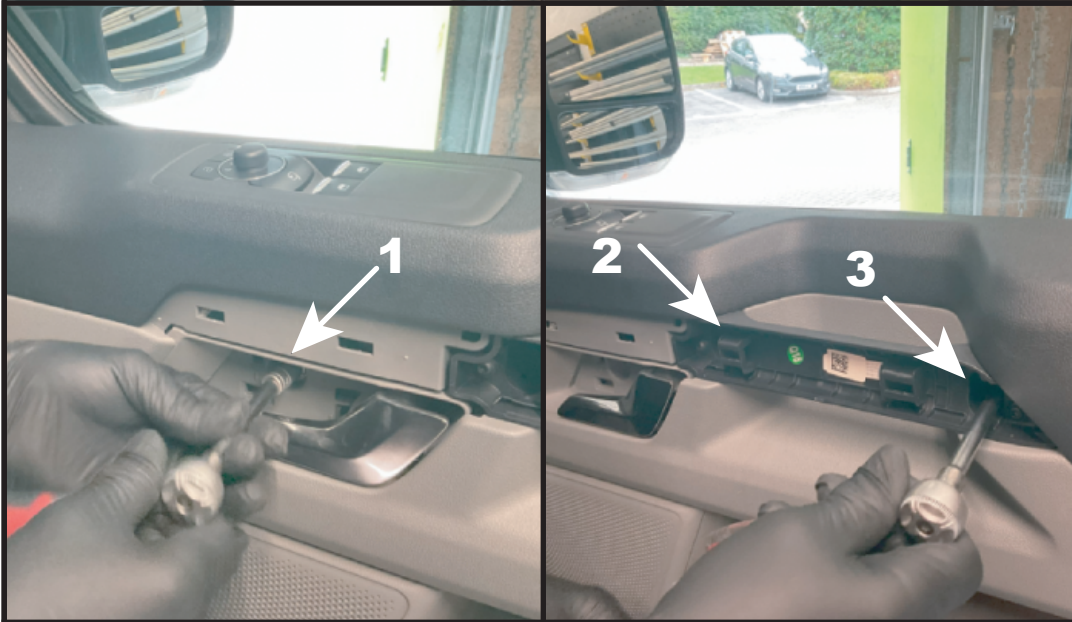
1.2. REMOVAL OF THE DOOR TRIM

The second panel trim locations are shown in image 1. Use a plastic trim removal tool to carefully remove all the remaining trims.



2. REMOVAL OF THE SCREWS

Once all the door trims have been removed, use a 7mm socket to unscrew all the screws as shown in the images.



3.1. REMOVAL OF THE DOOR PANEL

Using a plastic trim removal tool, carefully unclip the door panel starting in the lower right corner as shown in image 1. Repeat this process around the rest of the door panel.



3.2. REMOVAL OF THE DOOR PANEL

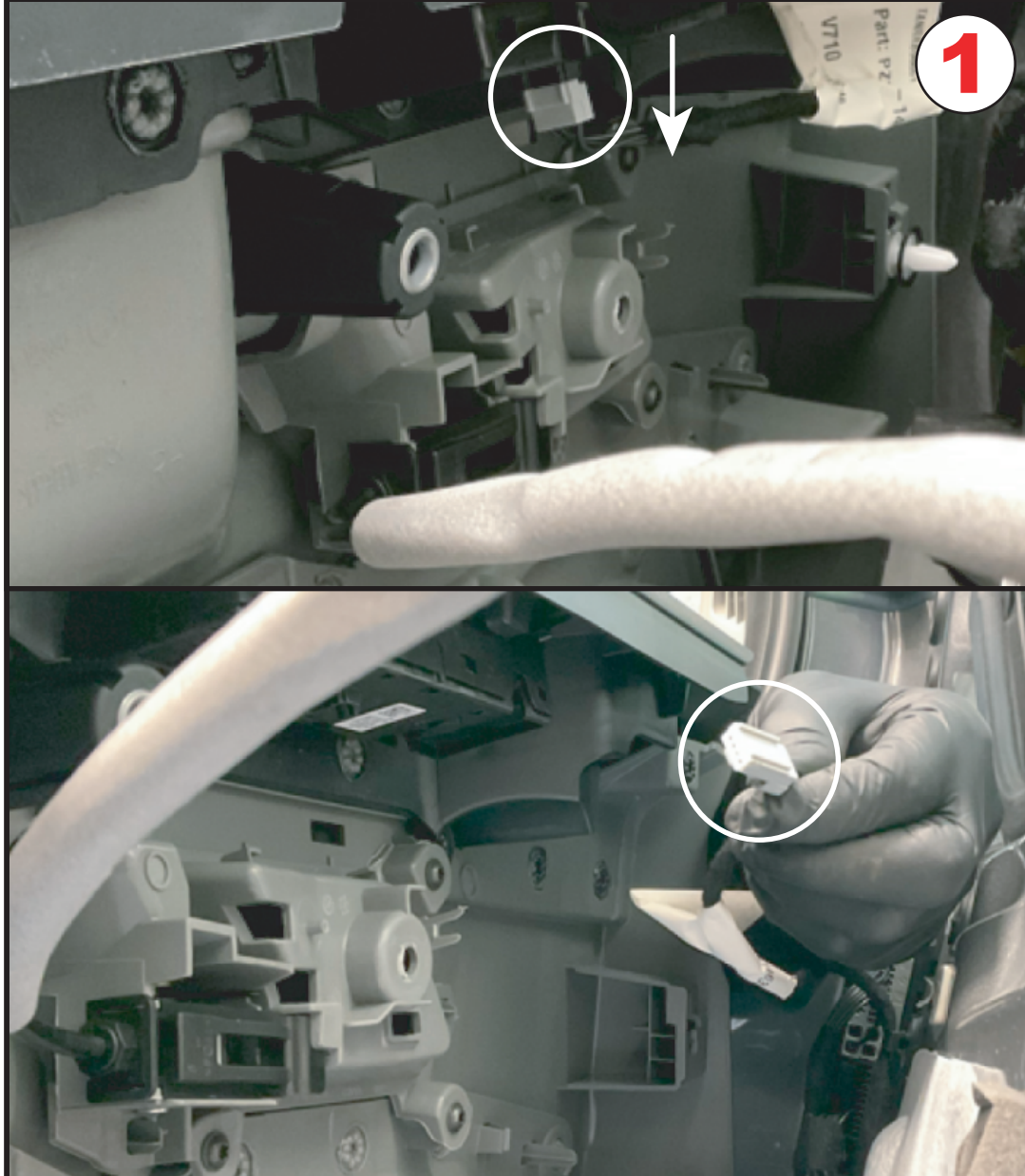
To remove the door panel, gently pull the panel towards you before lifting the panel up.



4.1. REMOVAL OF THE CABLES

The first cable position is located in image 1. This cable can be removed by gently pulling down on the cable.

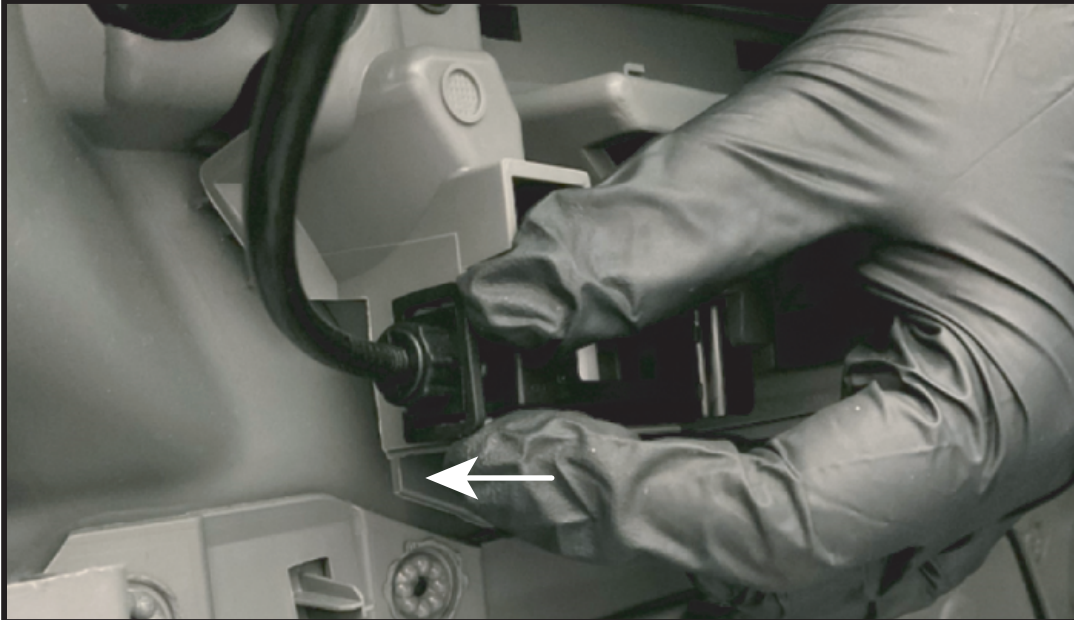
Note: The cables will be refitted at the end of the installation.



4.2. REMOVAL OF THE CABLES

The next cable can be removed by gently pushing the clip forward. This will release the clip, which will allow you to fully remove the door panel.

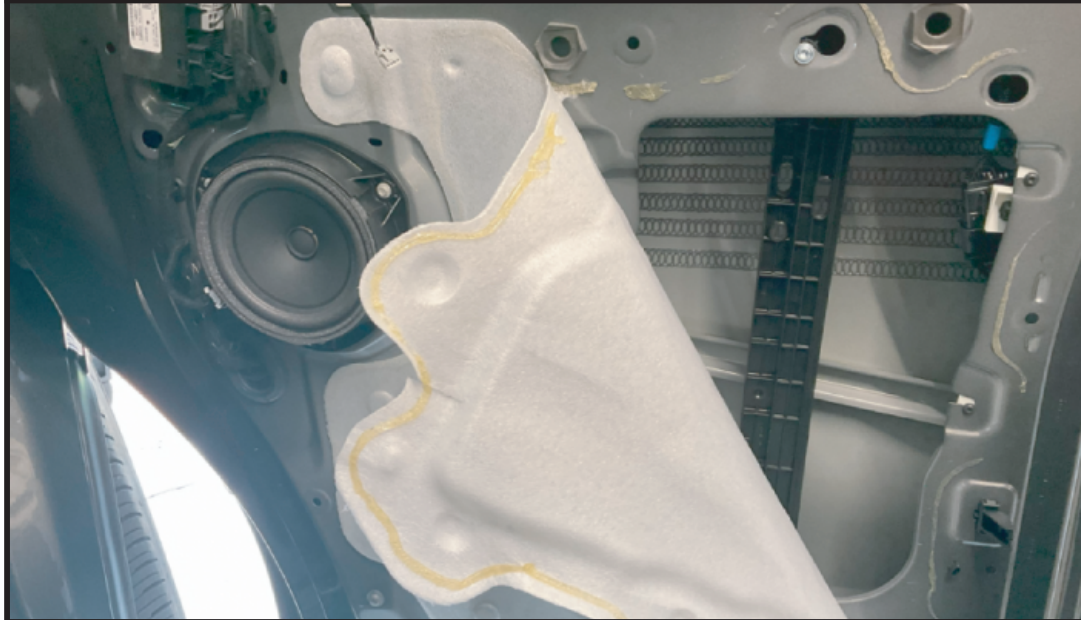
Note: The cables will be refitted at the end of the installation.



5. REMOVAL OF SOUND PROOFING

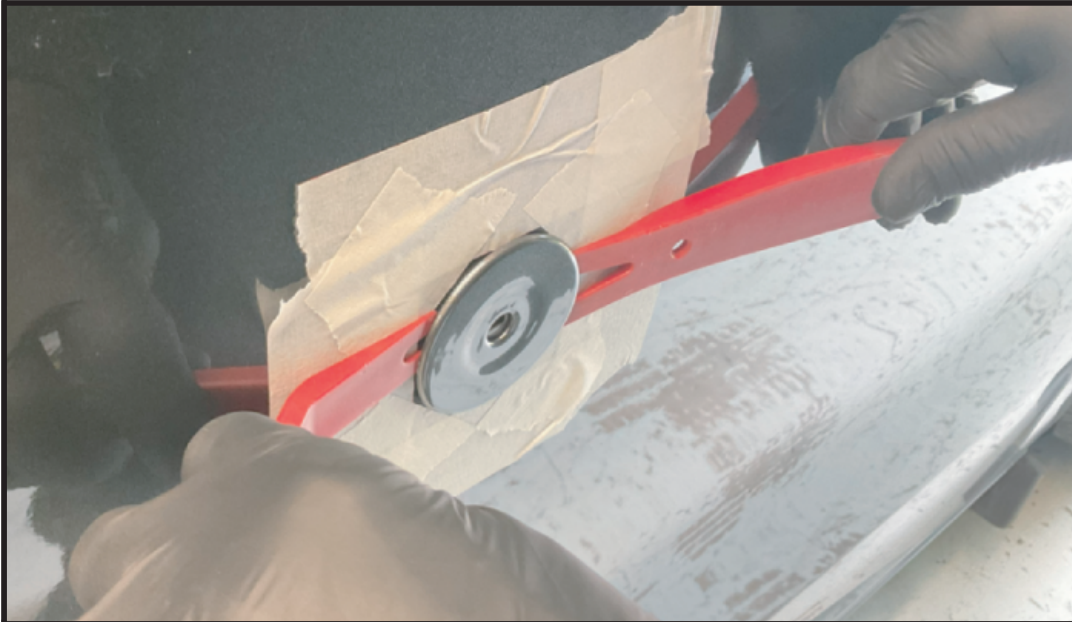
Peel back the soundproofing from the top right corner.

Note: The soundproofing will be refitted at the end of the installation.



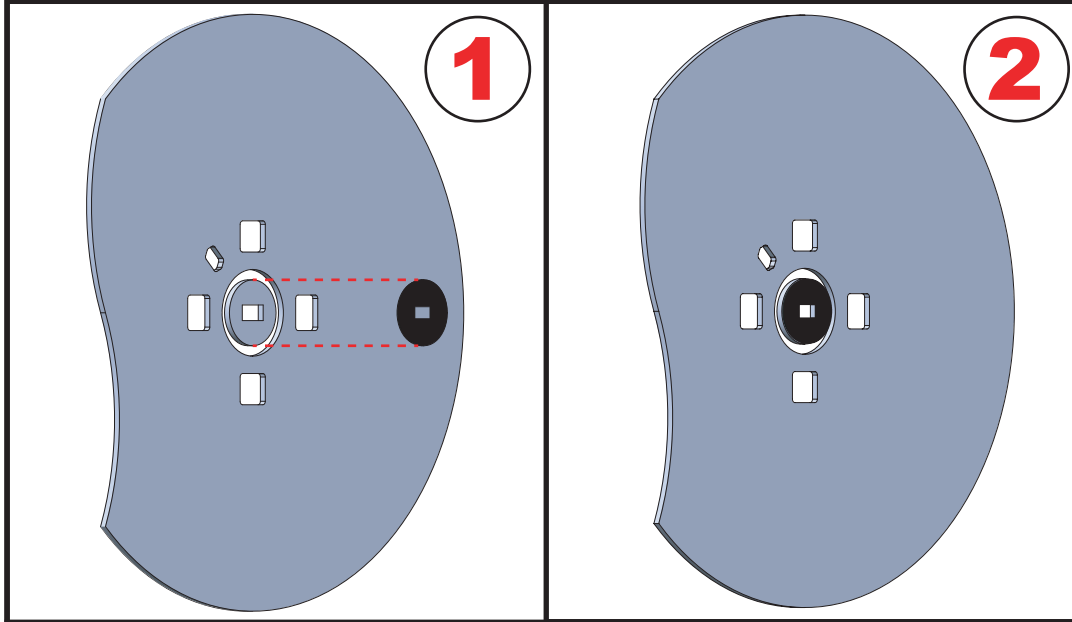
6. REMOVAL OF THE DOOR BEZEL

Apply masking tape around the bezel to protect the surrounding area. Use a plastic trim removal tool to carefully remove the bezel, as shown in image 1. Once removed, take off the masking tape and clean any residue.



7.1. FITTING THE BEZEL

Remove the protective film from the anti-drill plate (AS3807) to reveal the adhesive coating. Align the rectangle of the anti-drill plate with the rectangle of the lock and stick in place. Be cautious alignment is correct before sticking the assembly to the body. Use the key to check the alignment.

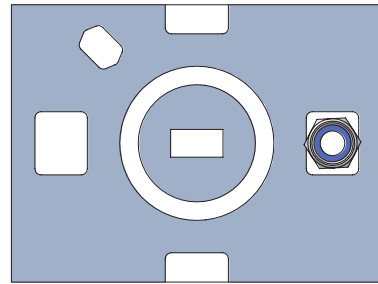
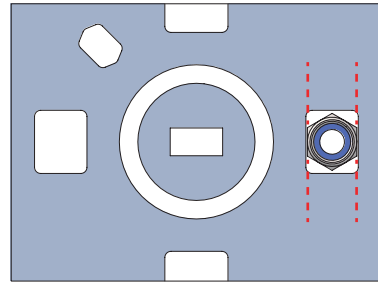
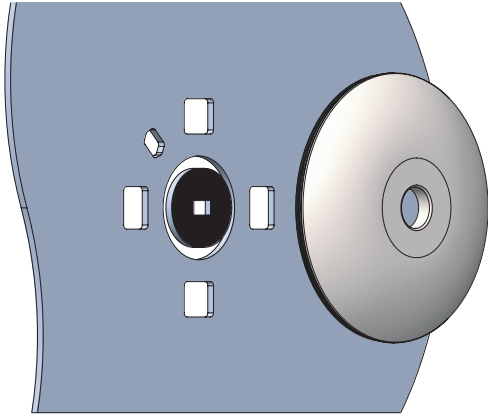


7.2. FITTING THE BEZEL

Test fit the bezel (AS3806) to ensure that you have **the nut facing parallel to the slot** and **on the right of the anti-drill plate**. Remove the protective film from the bezel and stick in place. Be cautious alignment is correct before sticking the assembly to the body. Use the key to check the alignment.



MAKE SURE THE NUT IS ON THE RIGHT OF THE ANTI-DRILL PLATE

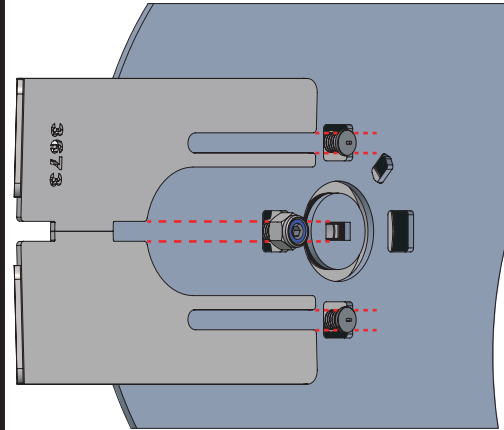


MAKE SURE THE NUT IS ALIGNED PARALLEL TO THE SLOT

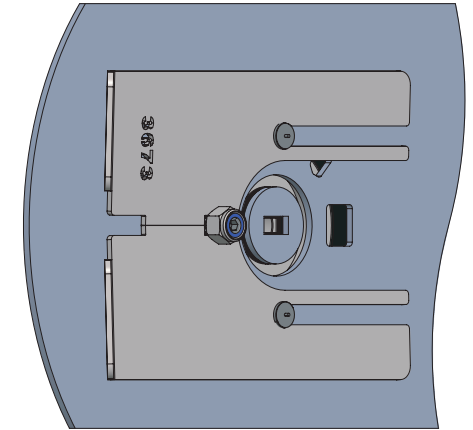
7.3. FITTING THE BEZEL

Slide the lock plate (ME3673) in place ensuring that the two studs are slotted into the channels. Make sure the two studs go to the end of the slot and the plate also locates under the nut, as shown in image 2. With the bezel in place, use an 8mm spanner to tighten the nut from the bezel.

1



2



8. COMPLETING THE INSTALLATION

Insert the key and ensure the lock functions properly. Once satisfied, refit the door panel and trims by reversing the earlier steps.
The completed lock looks like this.

