

IN9461

External Shield - Twin Rear Door

THANK YOU FOR PURCHASING A VAN GUARD HANDLE SHIELD

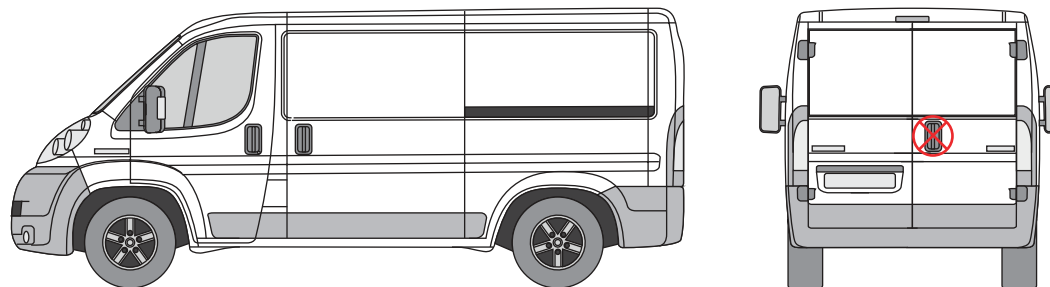
SUITS THE FOLLOWING MODELS

Vehicle:

Peugeot Boxer 2006 on
Fiat Ducato 2006 on
Citroen Relay 2006 on
Vauxhall Movano 2022 on

Door:

Rear - Twin



⊗ Indicates approximate placement of shield



CAUTION

PLEASE TAKE THE TIME TO READ THROUGH THE IMPORTANT INFORMATION BELOW BEFORE PROCEEDING TO FIT THIS PRODUCT



FAILURE TO TAKE NOTICE OF THE FOLLOWING INFORMATION MAY RESULT IN DAMAGE TO THE VEHICLE.



Important: Follow the instructions and all measurements carefully. Double check measurements before making any cuts. Drawings are for guidance only. Every effort has been made to ensure the accuracy of the instructions provided however Van Guard Accessories Ltd accepts no liability for any inaccuracies of either the drawings provided or vehicle variations. All bare metal should be treated with a manufacturer approved anti-corrosion compound and no liability is accepted for any incorrect installation or corrosion to body panels or within cavities. It is the sole responsibility of the installer to ensure the suitability of both the vehicle and of the supplied parts before installation is started. No liability is accepted for the fitting of the products.

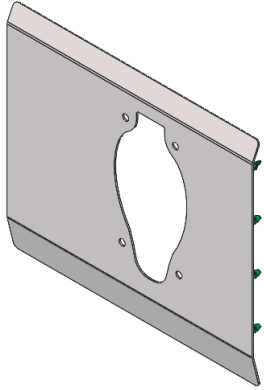
This FITTING INSTRUCTION is the property of VAN GUARD ACCESSORIES LTD. and must not be used for manufacturing purposes, copied nor communicated in any way to third parties without written permission from VAN GUARD ACCESSORIES LTD.

IN9461_A (CN:NR)

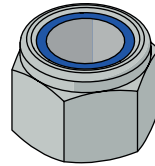
Van Guard Accessories Ltd
Fair Oak Close, Exeter Airport Business Park,
Exeter, Devon, EX5 2UL
www.van-guard.co.uk

SUPPLIED COMPONENTS

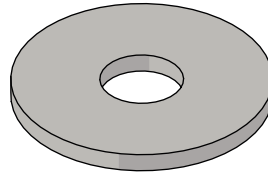
AS3809 X1
(SHIELD)



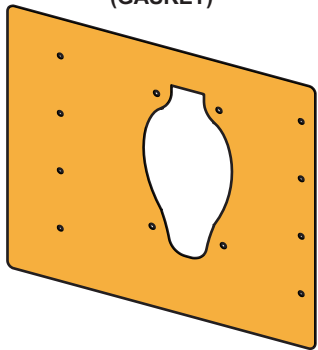
FX4004 X8
(M6 NYLOC)



FX4013 X8
(M6 WASHER - LARGE)



MA6247 X1
(GASKET)



Wear the appropriate protective equipment (safety glasses & gloves) while fitting this product.



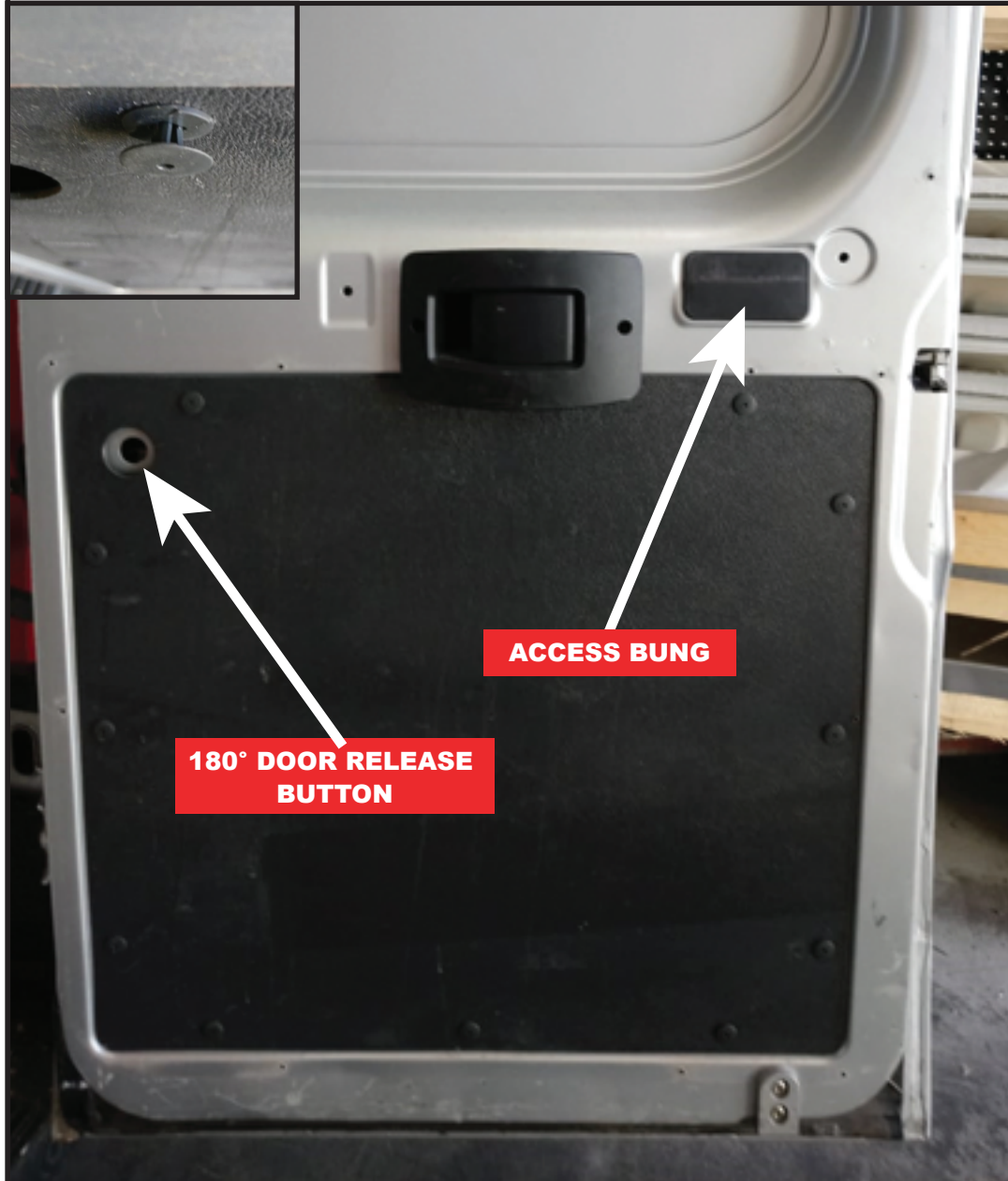
Dispose of packaging materials responsibly - Do not dispose until you have checked all parts and fixings are present.

FITTED IMAGE



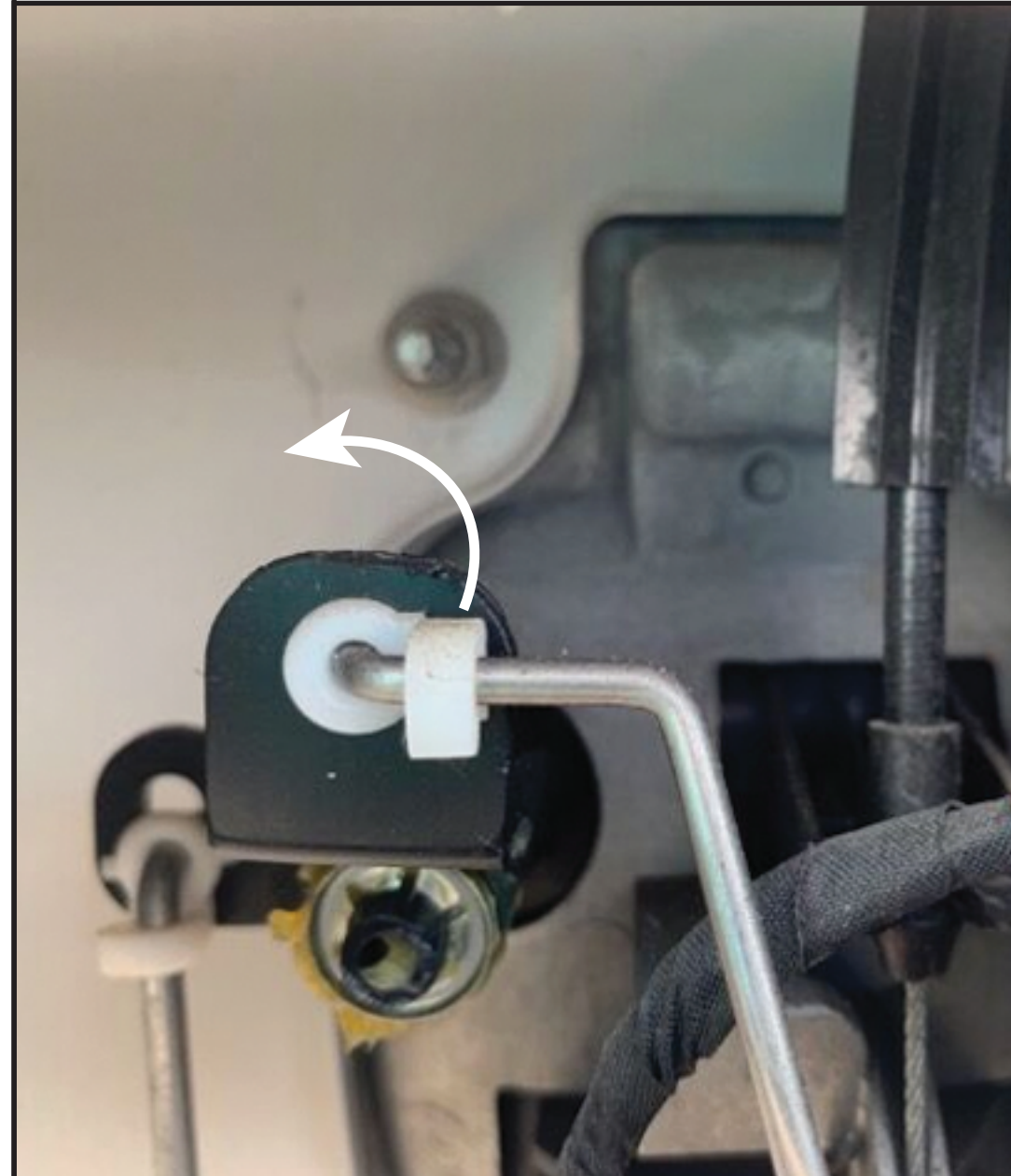
1. REMOVAL OF THE DOOR PANEL

Leave the sliding door open while carrying out this installation. Remove the door panel cover using a plastic trim removal tool, the 180° door release button and the access bung. Retain all components for refitting at the end of the installation.



2.1. REMOVAL OF THE EXTERNAL HANDLE

Rotate the clip up as shown in the image, then disconnect the latch rod from the handle, leaving the other end of the rod securely attached.



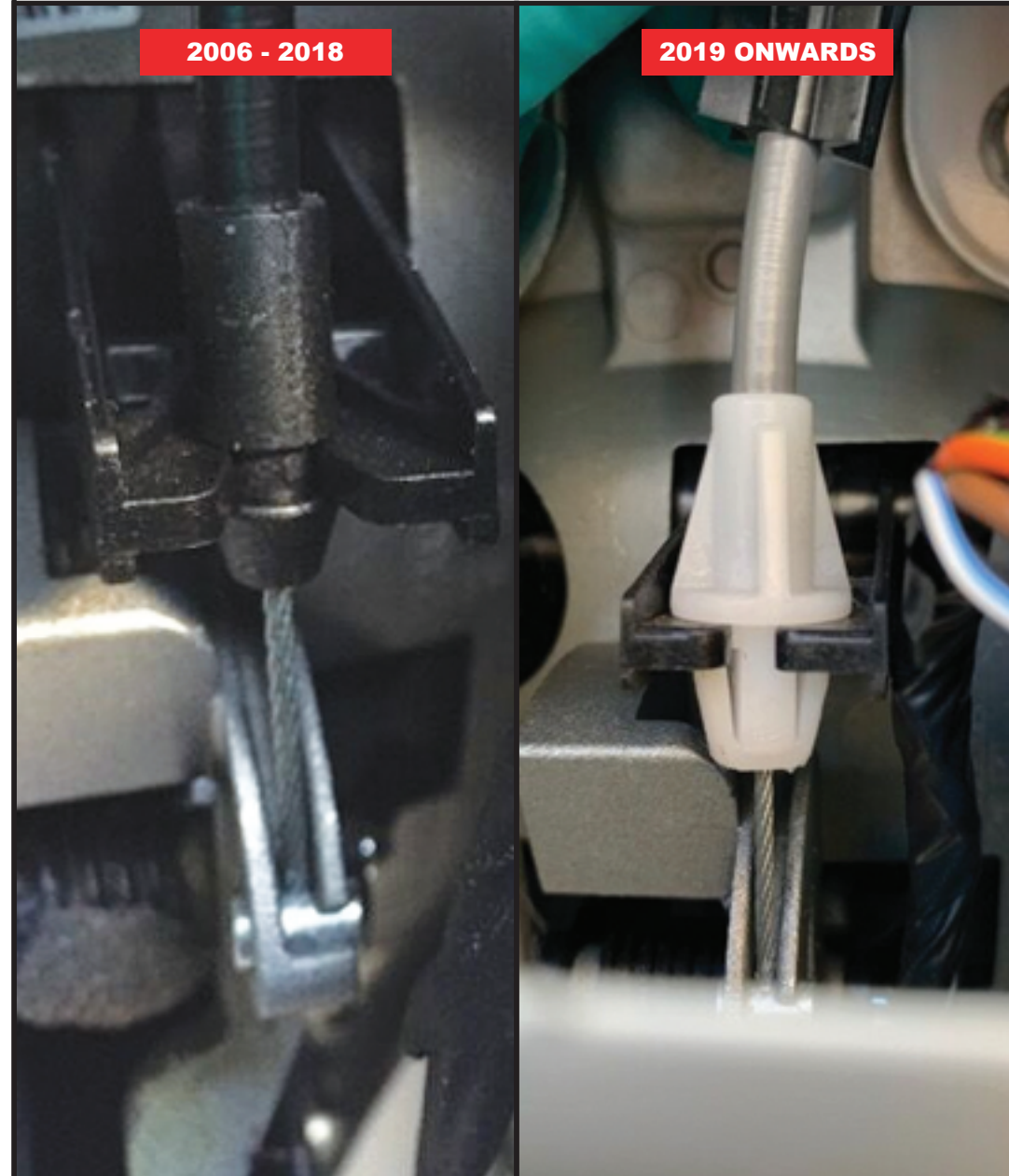
2.2. REMOVAL OF THE EXTERNAL HANDLE

Remove the 4X nuts and bracing plate, using a 10mm socket then remove the external handle assembly from the aperture as shown in the image.



2.3. REMOVAL OF THE EXTERNAL HANDLE

Unclip the cable from the back of the external handle assembly. The design of the cable changed for 2019 onwards models as shown in the image below.



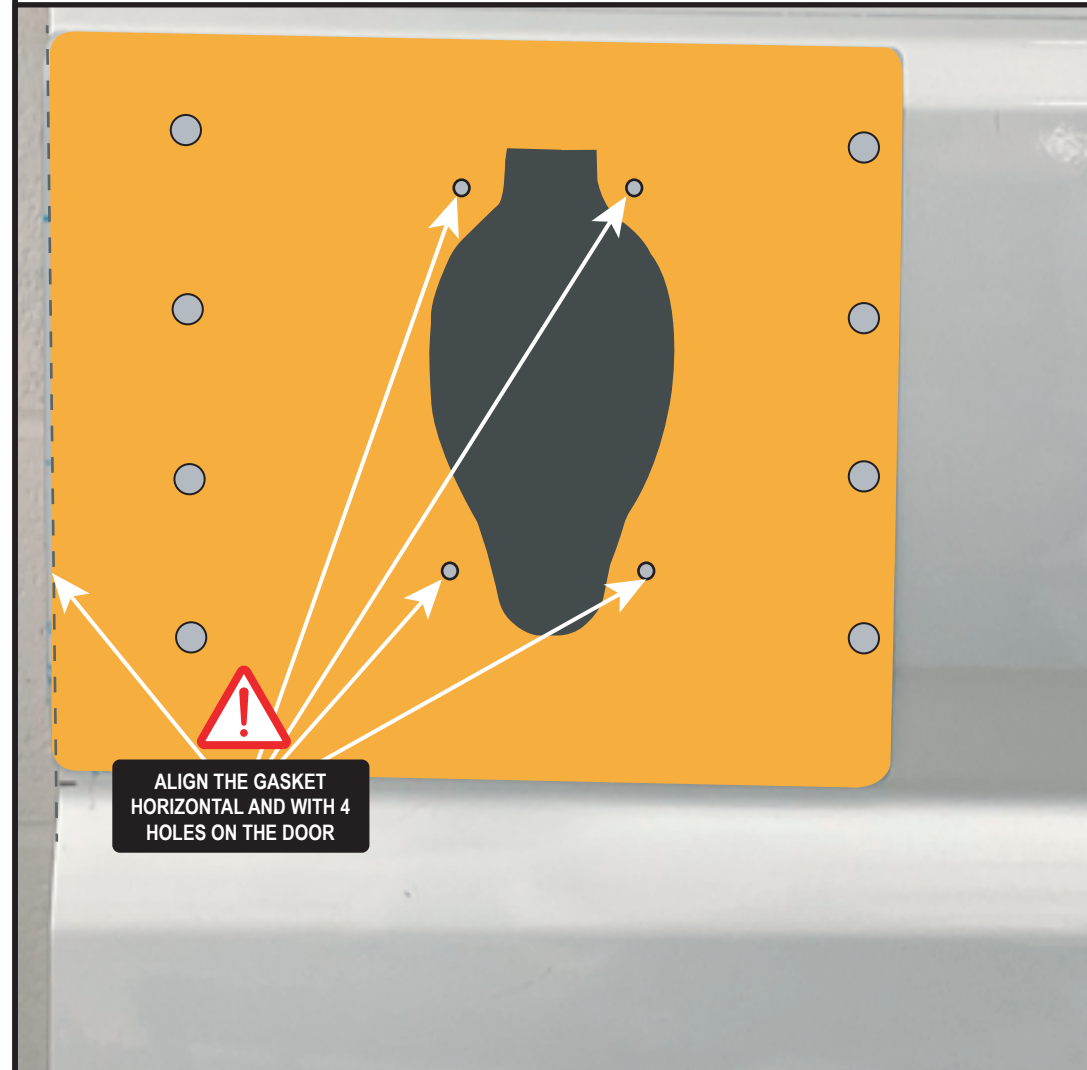
3. REMOVAL OF THE LATCH

Remove the 3X machine screws, using a T40 Torx screw driver, to create access space to aid fitting of the M6 nuts on the shield studs.



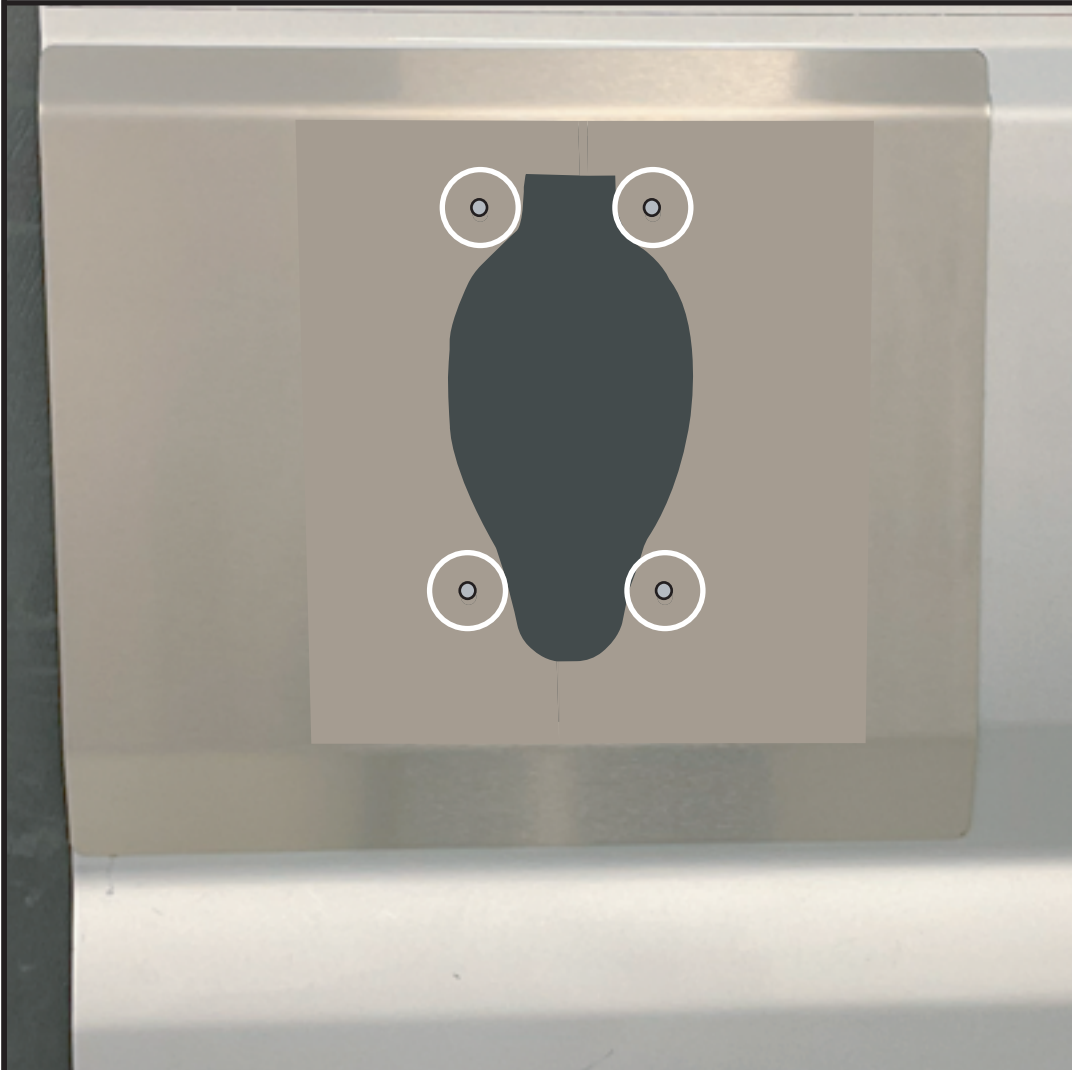
4. POSITION THE SHIELD

1. Protect the area of the door where the shield will be fitted with masking tape.
2. Use the gasket as a template to mark the hole positions. Make sure the gasket is orientated correctly with the yellow backing facing you. The gasket is profiled 1.5mm smaller than the shield so it needs to be offset 1.5mm from the edge of the door.
3. Mark the eight hole centres.
4. **With the door open**, carefully drill the fixing holes, using a 4mm pilot then opening the 8 x M6 holes to 8mm. Remove any swarf and treat bare metal with anti-corrosion spray.



5. SECURING THE SHIELD

1. Stick the rubber gasket to the shield and then place the shield in position.
2. Replace the handle and bracing plate and nuts, removed earlier.
3. Secure the shield in place with the 8 x large washers and 8 x M6 nyloc nuts on the remaining shield studs. **Take care not to overtighten the nuts.**



6. REFITTING THE HANDLE & DOOR PANEL

Refit the door handle by reversing the earlier steps. Check that everything is operating correctly (including the internal release handle). Once the lock has been checked, refit the door panel, the 180° door release button, access bung and latch.



7. COMPLETING THE INSTALLATION

The completed handle shield looks like this.

