

**IN9463**

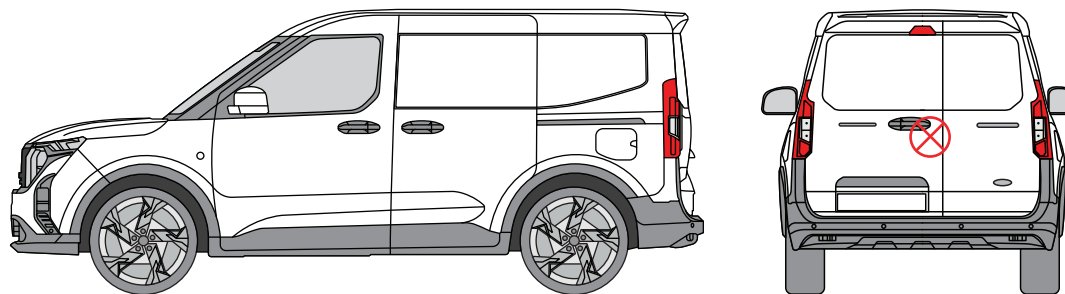
**External Shield - Twin Rear Door**

**THANK YOU FOR PURCHASING A VAN GUARD EXTERNAL SHIELD**

**SUITS THE FOLLOWING MODELS**

**Vehicle:**  
Ford Transit Courier 2024 on

**Door:**  
Rear - Twin



⊗ Indicates approximate placement of shield



**CAUTION**

**PLEASE TAKE THE TIME TO READ THROUGH THE IMPORTANT INFORMATION BELOW BEFORE PROCEEDING TO FIT THIS PRODUCT**



**FAILURE TO TAKE NOTICE OF THE FOLLOWING INFORMATION MAY RESULT IN DAMAGE TO THE VEHICLE.**



**Important:** Follow the instructions and all measurements carefully. Double check measurements before making any cuts. Drawings are for guidance only. Every effort has been made to ensure the accuracy of the instructions provided however Van Guard Accessories Ltd accepts no liability for any inaccuracies of either the drawings provided or vehicle variations. All bare metal should be treated with a manufacturer approved anti-corrosion compound and no liability is accepted for any incorrect installation or corrosion to body panels or within cavities. It is the sole responsibility of the installer to ensure the suitability of both the vehicle and of the supplied parts before installation is started. No liability is accepted for the fitting of the products.

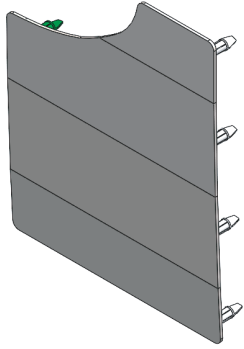
This FITTING INSTRUCTION is the property of VAN GUARD ACCESSORIES LTD. and must not be used for manufacturing purposes, copied nor communicated in any way to third parties without written permission from VAN GUARD ACCESSORIES LTD.

IN9463\_A (CN:NR)

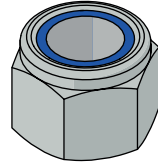
Van Guard Accessories Ltd  
Fair Oak Close, Exeter Airport Business Park,  
Exeter, Devon, EX5 2UL  
[www.van-guard.co.uk](http://www.van-guard.co.uk)

# SUPPLIED COMPONENTS

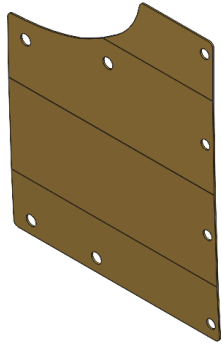
**AS3812 X1**  
(SHIELD)



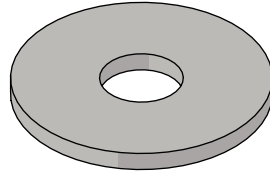
**FX4004 X4**  
(M6 NYLOC)



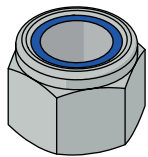
**MA6250 X1**  
(RUBBER GASKET)



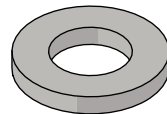
**FX4013 X4**  
(M6 WASHER - LARGE)



**FX4111 X4**  
(M5 MYLOC)



**FX4017 X4**  
(M6 WASHER - SMALL)



Wear the appropriate protective equipment (safety glasses & gloves) while fitting this product.



Dispose of packaging materials responsibly - Do not dispose until you have checked all parts and fixings are present.

# FITTED IMAGE



## 1. REMOVAL OF THE DOOR PANEL

1. Remove the door panel.
2. Carefully remove the sound proofing from under the door panel.



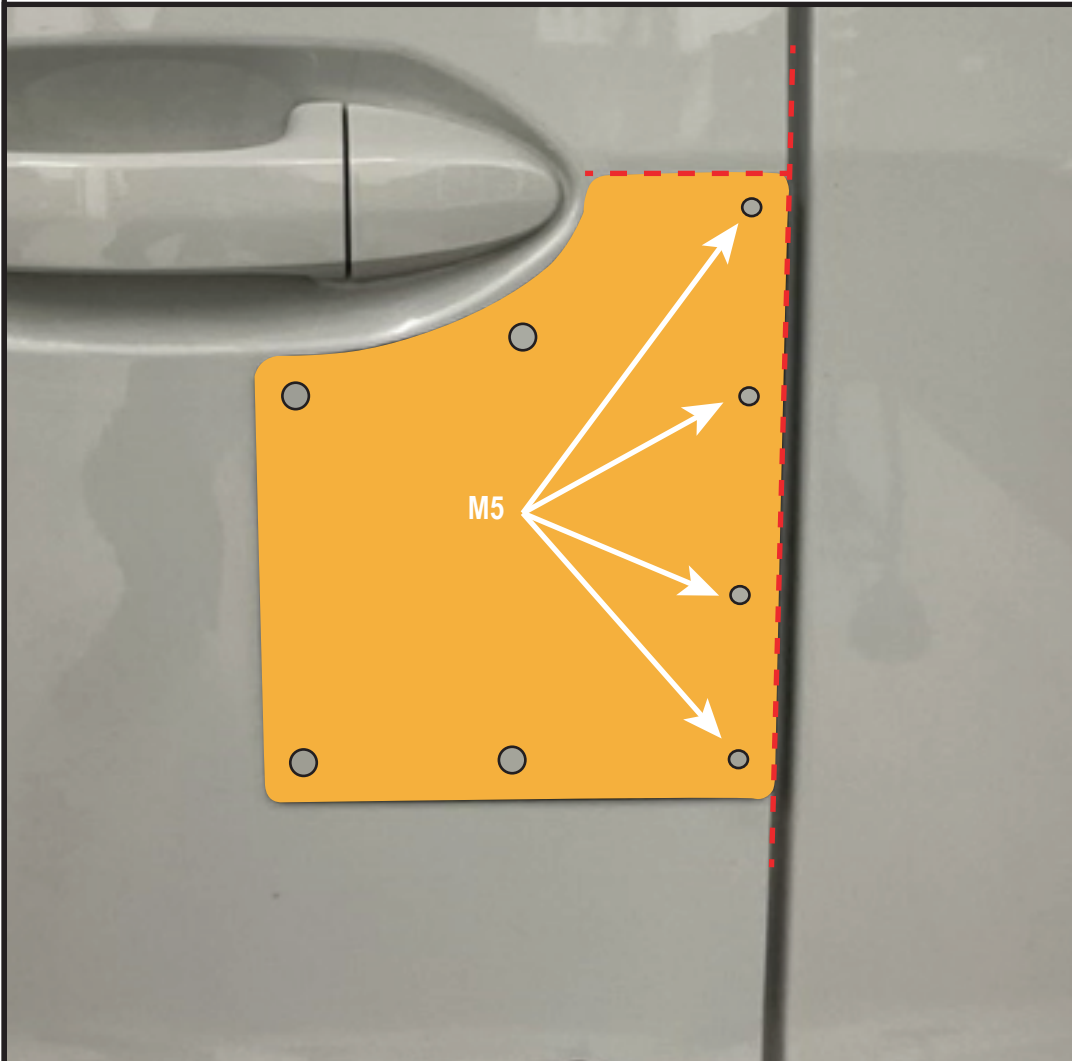
## 2.1 POSITIONING THE SHIELD

1. Protect the area of the door where the shield will be fitted with masking tape.
2. The shield should be positioned 5mm down from the swage line.



## 2.2 POSITIONING THE SHIELD

1. Use the gasket as a template to mark the hole positions. Make sure the gasket is orientated correctly with the yellow backing facing you. The rubber gasket is profiled 1.5mm smaller than the shield so it needs to be offset 1.5mm from the top edge of the shield and 1.5mm from the edge of the door.
2. Mark the eight hole centres.
3. **With the door open**, carefully drill the fixings holes, using a 4mm pilot then opening the 4 x M6 holes to 8mm and the 4 x M5 holes to 7mm. Remove any swarf and treat bare metal with anti-corrosion spray.



## 3. RUBBER GASKET & WASHER SIZES

1. Stick the gasket to the shield and then place the shield in position.
2. Place the four small washers over the studs highlighted below, and loosely fit the M5 nuts.
3. Place the large washers over the remaining studs, and loosely fit the M6 nuts.



## 4. SECURING THE SHIELD

Tighten the 4 x M5 nyloc nuts on the edge of the door and the 4 x M6 nyloc nuts on the remaining studs. **Take care not to overtighten the nuts.**

Once fitted, refit the sound proofing and door panel.

