

**IN9466**

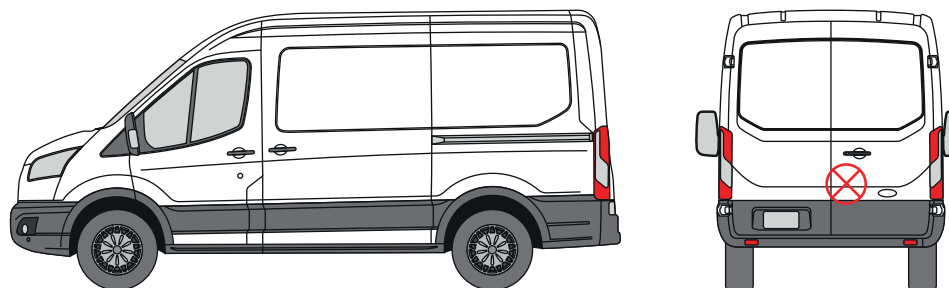
**External Shield - Twin Rear Door**

**THANK YOU FOR PURCHASING A VAN GUARD EXTERNAL SHIELD**

**SUITS THE FOLLOWING MODELS**

**Vehicle:**  
Saic Maxus Deliver 9

**Door:**  
Rear - Twin



⊗ Indicates approximate placement of lock



**CAUTION**

**PLEASE TAKE THE TIME TO READ THROUGH THE IMPORTANT INFORMATION BELOW BEFORE PROCEEDING TO FIT THIS PRODUCT**



**FAILURE TO TAKE NOTICE OF THE FOLLOWING INFORMATION MAY RESULT IN DAMAGE TO THE VEHICLE.**



**Important:** Follow the instructions and all measurements carefully. Double check measurements before making any cuts. Drawings are for guidance only. Every effort has been made to ensure the accuracy of the instructions provided however Van Guard Accessories Ltd accepts no liability for any inaccuracies of either the drawings provided or vehicle variations. All bare metal should be treated with a manufacturer approved anti-corrosion compound and no liability is accepted for any incorrect installation or corrosion to body panels or within cavities. It is the sole responsibility of the installer to ensure the suitability of both the vehicle and of the supplied parts before installation is started. No liability is accepted for the fitting of the products.

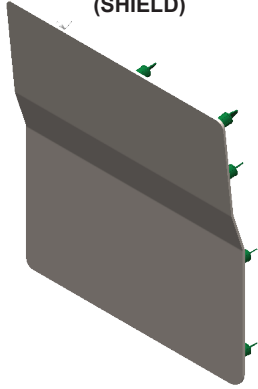
This FITTING INSTRUCTION is the property of VAN GUARD ACCESSORIES LTD. and must not be used for manufacturing purposes, copied nor communicated in any way to third parties without written permission from VAN GUARD ACCESSORIES LTD.

IN9466\_A (CN:NR)

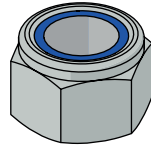
Van Guard Accessories Ltd  
Fair Oak Close, Exeter Airport Business Park,  
Exeter, Devon, EX5 2UL  
[www.van-guard.co.uk](http://www.van-guard.co.uk)

# SUPPLIED COMPONENTS

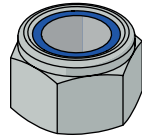
**AS3815 X1**  
(SHIELD)



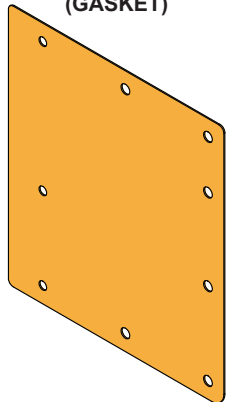
**FX4004 X6**  
(M6 NYLOC)



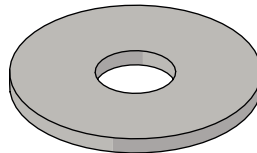
**FX4111 X3**  
(M5 NYLOC)



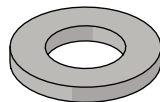
**MA6252 X1**  
(GASKET)



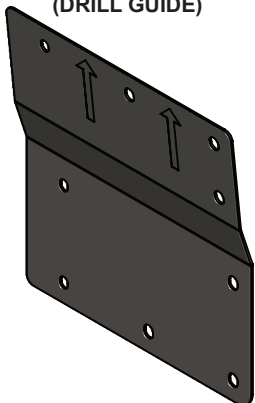
**FX4013 X6**  
(M6 WASHER - LARGE)



**FX4017 X3**  
(M6 WASHER - SMALL)



**ME3708 X1**  
(DRILL GUIDE)



**MA6099 X3**  
(PLASTIC BUNG)



Wear the appropriate protective equipment (safety glasses & gloves) while fitting this product.



Dispose of packaging materials responsibly - Do not dispose until you have checked all parts and fixings are present.

# FITTED IMAGE



## 1. REMOVAL OF THE DOOR PANEL

1. Remove the door panel.
2. If there is a sound proofing membrane behind the door panel, carefully remove this too.



## 2. POSITIONING THE SHIELD

1. Protect the area of the door where the shield will be fitted with masking tape.
2. Use the supplied drill guide (ME3708) as a template. Place the template in position and mark the hole.



### 3. DRILL HOLES

With the door open, carefully drill the fixings holes, using a 4mm pilot then opening the 6 x M6 holes to 8mm and the 3 x M5 holes to 7mm. The three highlighted holes have a second skin, carefully drill through both skins. **Take care of what is behind the door when drilling.** Remove any swarf and treat bare metal with anti-corrosion spray.



### 4. DRILL HOLES

Open out the three holes shown to 13mm, this is to allow you to get a socket through the hole to later tighten the fixings. **Take care not to drill the outer skin of the door.**



## 5. FITTING THE SHIELD

Stick the gasket to the outer shield and then place the shield in position. Secure in place with the 3 x small washers and 3 x M5 nyloc nuts at the edge of the door and the 6 x large washers and 6 x M6 nyloc nuts on the remaining studs. **Take care not to overtighten the nuts.** Once fitted, refit the door panel.



## 6. FITTING THE PLASTIC BUNGS

Insert the three supplied plastic bungs to cover the holes shown.

