

**IN9468**

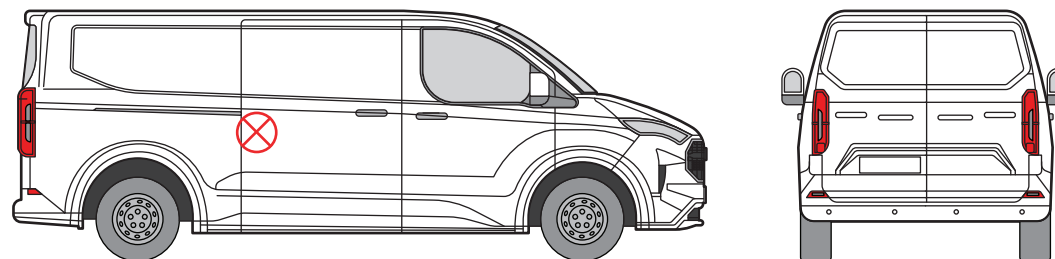
**External Shield - Sliding Door**

**THANK YOU FOR PURCHASING A VAN GUARD EXTERNAL SHIELD**

**SUITS THE FOLLOWING MODELS**

**Vehicle:**  
Ford Transit Custom 2023-  
Volkswagen Transporter T7 2025-

**Door:**  
Sliding - Driver's



 Indicates approximate placement of shield



**CAUTION**

**PLEASE TAKE THE TIME TO READ THROUGH THE IMPORTANT INFORMATION BELOW BEFORE PROCEEDING TO FIT THIS PRODUCT**



**FAILURE TO TAKE NOTICE OF THE FOLLOWING INFORMATION MAY RESULT IN DAMAGE TO THE VEHICLE.**



**Important:** Follow the instructions and all measurements carefully. Double check measurements before making any cuts. Drawings are for guidance only. Every effort has been made to ensure the accuracy of the instructions provided however Van Guard Accessories Ltd accepts no liability for any inaccuracies of either the drawings provided or vehicle variations. All bare metal should be treated with a manufacturer approved anti-corrosion compound and no liability is accepted for any incorrect installation or corrosion to body panels or within cavities. It is the sole responsibility of the installer to ensure the suitability of both the vehicle and of the supplied parts before installation is started. No liability is accepted for the fitting of the products.

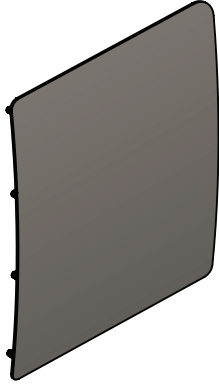
This FITTING INSTRUCTION is the property of VAN GUARD ACCESSORIES LTD. and must not be used for manufacturing purposes, copied nor communicated in any way to third parties without written permission from VAN GUARD ACCESSORIES LTD.

IN9468\_A (CN:NR)

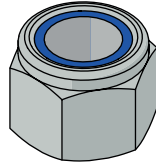
Van Guard Accessories Ltd  
Fair Oak Close, Exeter Airport Business Park,  
Exeter, Devon, EX5 2UL  
[www.van-guard.co.uk](http://www.van-guard.co.uk)

# SUPPLIED COMPONENTS

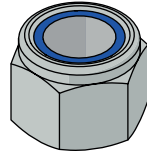
**AS3826 X1**  
(SHIELD)



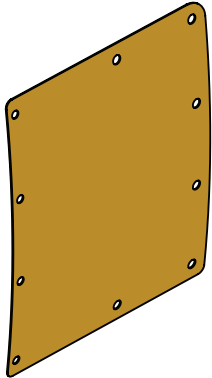
**FX4004 X6**  
(M6 NYLOC)



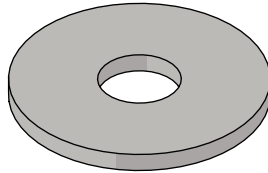
**FX4111 X4**  
(M5 NYLOC)



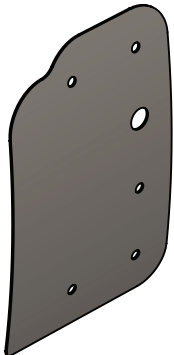
**MA6249 X1**  
(RUBBER GASKET)



**FX4013 X6**  
(M6 WASHER - LARGE)



**ME3712 X1**  
(INTERNAL SHEILD)



**ME3640 X1**  
(INTERNAL SIDE STRIP)



Wear the appropriate protective equipment (safety glasses & gloves) while fitting this product.



Dispose of packaging materials responsibly - Do not dispose until you have checked all parts and fixings are present.

# FITTED IMAGE



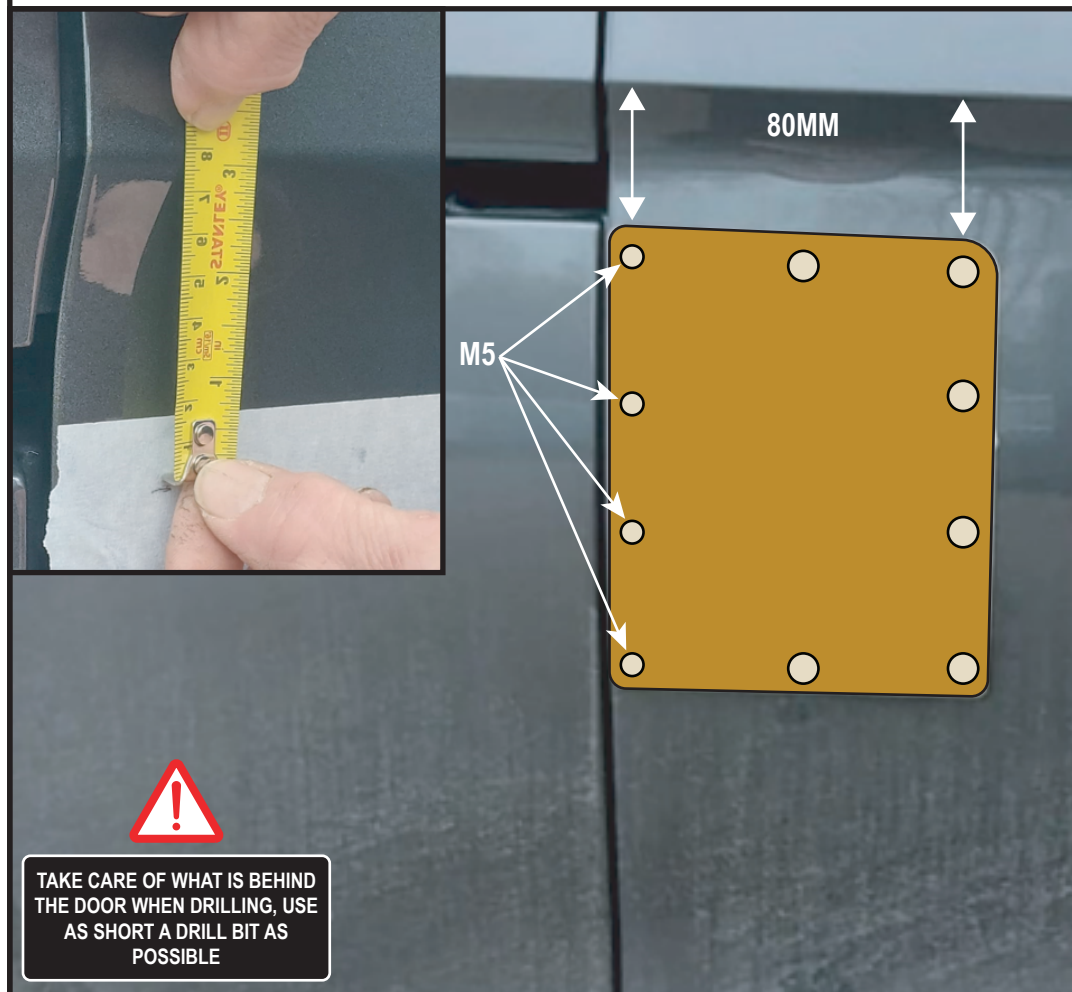
## 1. ACCESS INSIDE OF DOOR

Remove the plastic panel to the rear edge of the side loading door. There are two clips to the forward edge, one to the top and one to the bottom. The rear edge is hooked over the metal.



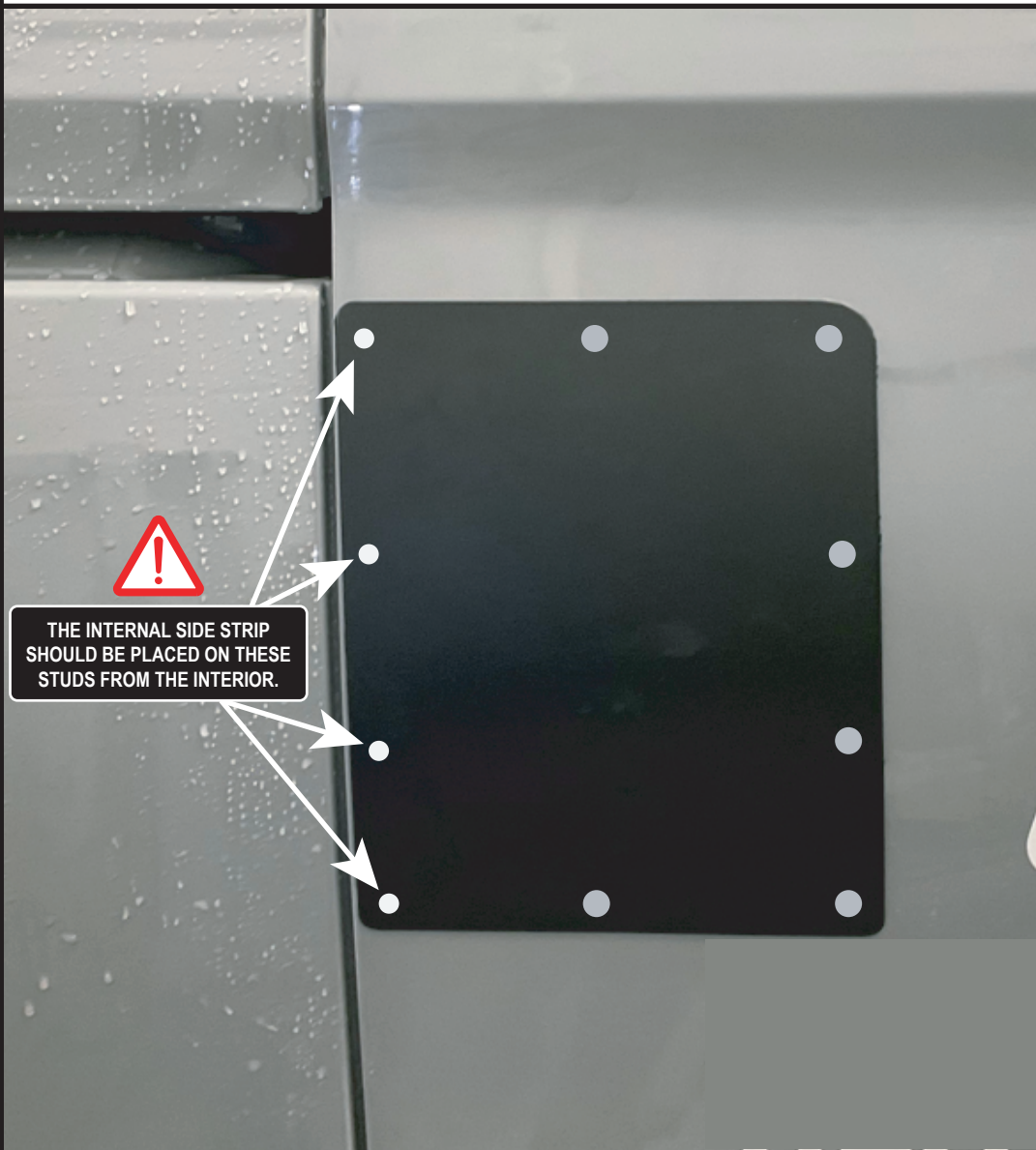
## 2. POSITIONING THE SHIELD

1. Protect the area of the door where the shield will be fitted with masking tape.
2. Mark 80mm from the seam of the door as shown. Use the rubber gasket as a template to mark the hole positions. Make sure the gasket is orientated correctly with the yellow backing facing you. Move the gasket up and down until the gasket lines up with the door correctly. The rubber gasket is profiled 1.5mm smaller than the shield so it needs to be offset 1.5mm from the edge of the door.
3. Mark down the ten hole centres.
4. **With the door open**, carefully drill the fixings holes, using a 4mm pilot then opening to 8mm for the 6 x M6 holes and 7mm for the 4 x M5 holes. Remove any swarf and treat bare metal with anti-corrosion spray.



### 3. RUBBER GASKET & WASHER SIZES

1. Stick the rubber gasket to the outer shield and then place the shield in position.
2. Place the internal side strip over the studs highlighted below from the interior of the vehicle.
3. Place the internal shield over the remaining studs from the interior of the vehicle. Place the large washers over the internal shield and studs from the interior of the vehicle.



### 4. SECURING THE SHIELD

Secure in place with the 4 x M5 nyloc nuts on the edge of the door and the 6 x M6 nyloc nuts on the remaining studs. **Take care not to overtighten the nuts.** Once fitted, refit the door panel.

