

IN9471

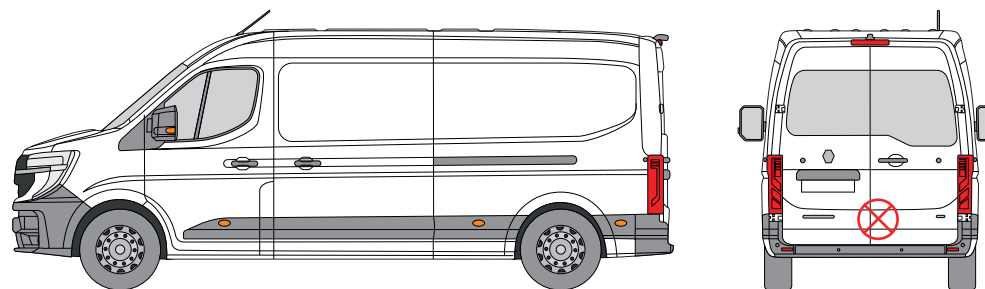
External Shield - Twin Rear Door

THANK YOU FOR PURCHASING A VAN GUARD EXTERNAL SHIELD

SUITS THE FOLLOWING MODELS

Vehicle:
Renault Master 2025 on
Nissan Interstar 2025 on

Door:
Rear - Twin



⊗ Indicates approximate placement of shield



CAUTION

PLEASE TAKE THE TIME TO READ THROUGH THE IMPORTANT INFORMATION BELOW BEFORE PROCEEDING TO FIT THIS PRODUCT



FAILURE TO TAKE NOTICE OF THE FOLLOWING INFORMATION MAY RESULT IN DAMAGE TO THE VEHICLE.



Important: Follow the instructions and all measurements carefully. Double check measurements before making any cuts. Drawings are for guidance only. Every effort has been made to ensure the accuracy of the instructions provided however Van Guard Accessories Ltd accepts no liability for any inaccuracies of either the drawings provided or vehicle variations. All bare metal should be treated with a manufacturer approved anti-corrosion compound and no liability is accepted for any incorrect installation or corrosion to body panels or within cavities. It is the sole responsibility of the installer to ensure the suitability of both the vehicle and of the supplied parts before installation is started. No liability is accepted for the fitting of the products.

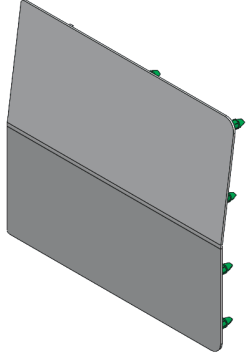
This FITTING INSTRUCTION is the property of VAN GUARD ACCESSORIES LTD. and must not be used for manufacturing purposes, copied nor communicated in any way to third parties without written permission from VAN GUARD ACCESSORIES LTD.

IN9471_A (CN:NR)

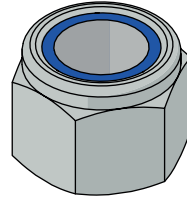
Van Guard Accessories Ltd
Fair Oak Close, Exeter Airport Business Park,
Exeter, Devon, EX5 2UL
www.van-guard.co.uk

SUPPLIED COMPONENTS

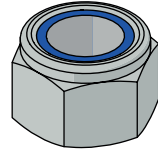
AS3847 X1
(SHIELD)



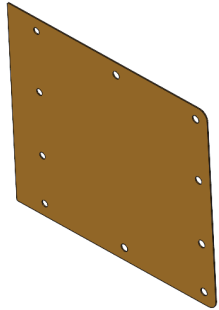
FX4004 X6
(M6 NYLOC)



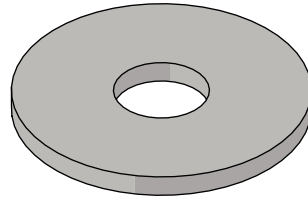
FX4111 X4
(M5 NYLOC)



MA6270 X1
(GASKET)



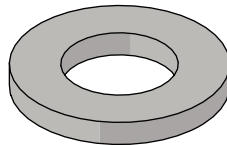
FX4013 X6
(M6 WASHER - LARGE)



MA6099 X4
(PLASTIC BUNG)



FX4017 X4
(M6 WASHER - SMALL)



Wear the appropriate protective equipment (safety glasses & gloves) while fitting this product.



Dispose of packaging materials responsibly - Do not dispose until you have checked all parts and fixings are present.

FITTED IMAGE



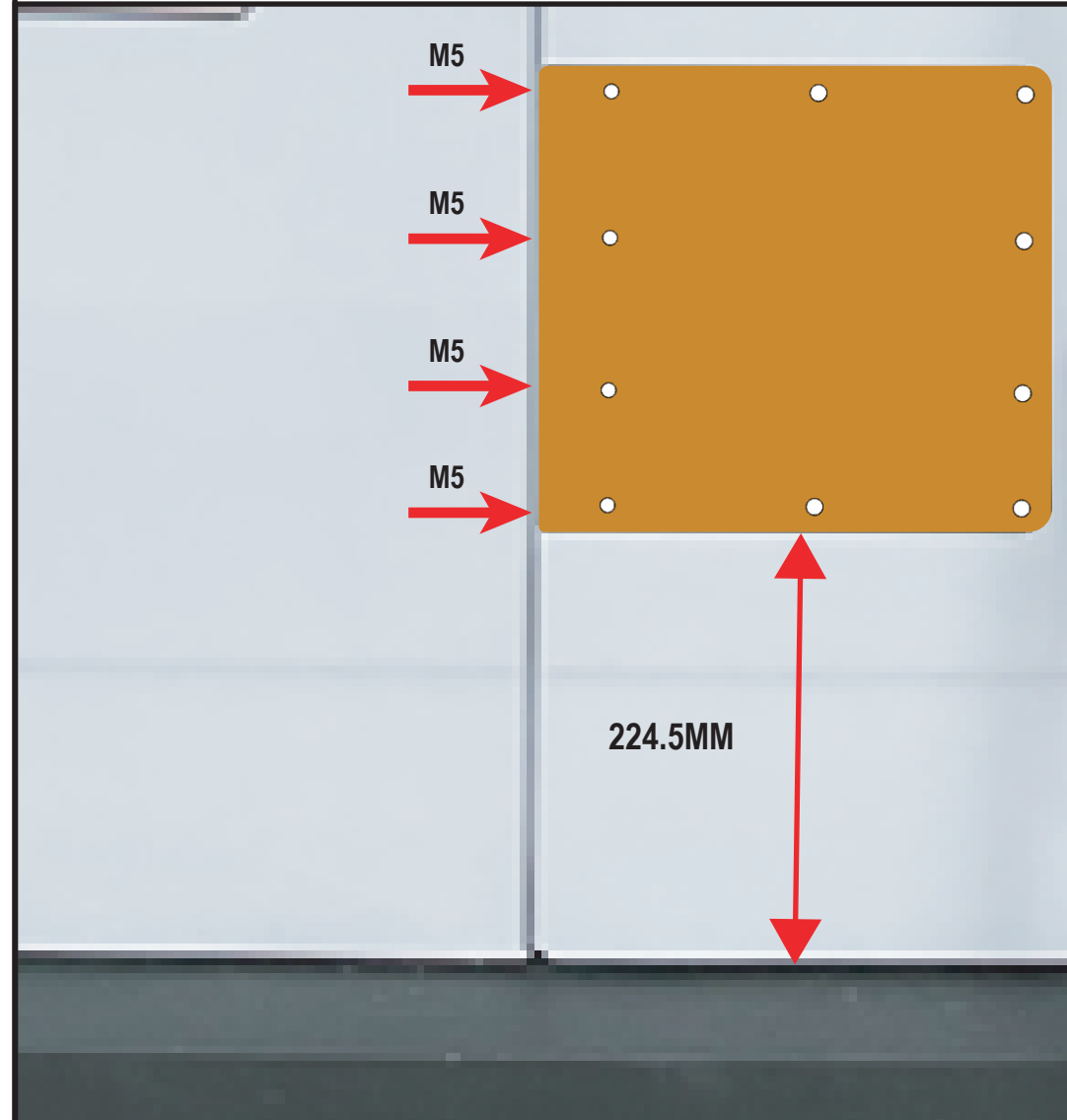
1. REMOVAL OF THE DOOR PANEL

Leave the sliding door open while carrying out this installation. Remove the door panel cover using a plastic trim removal tool, Retain all components for refitting at the end of the installation.



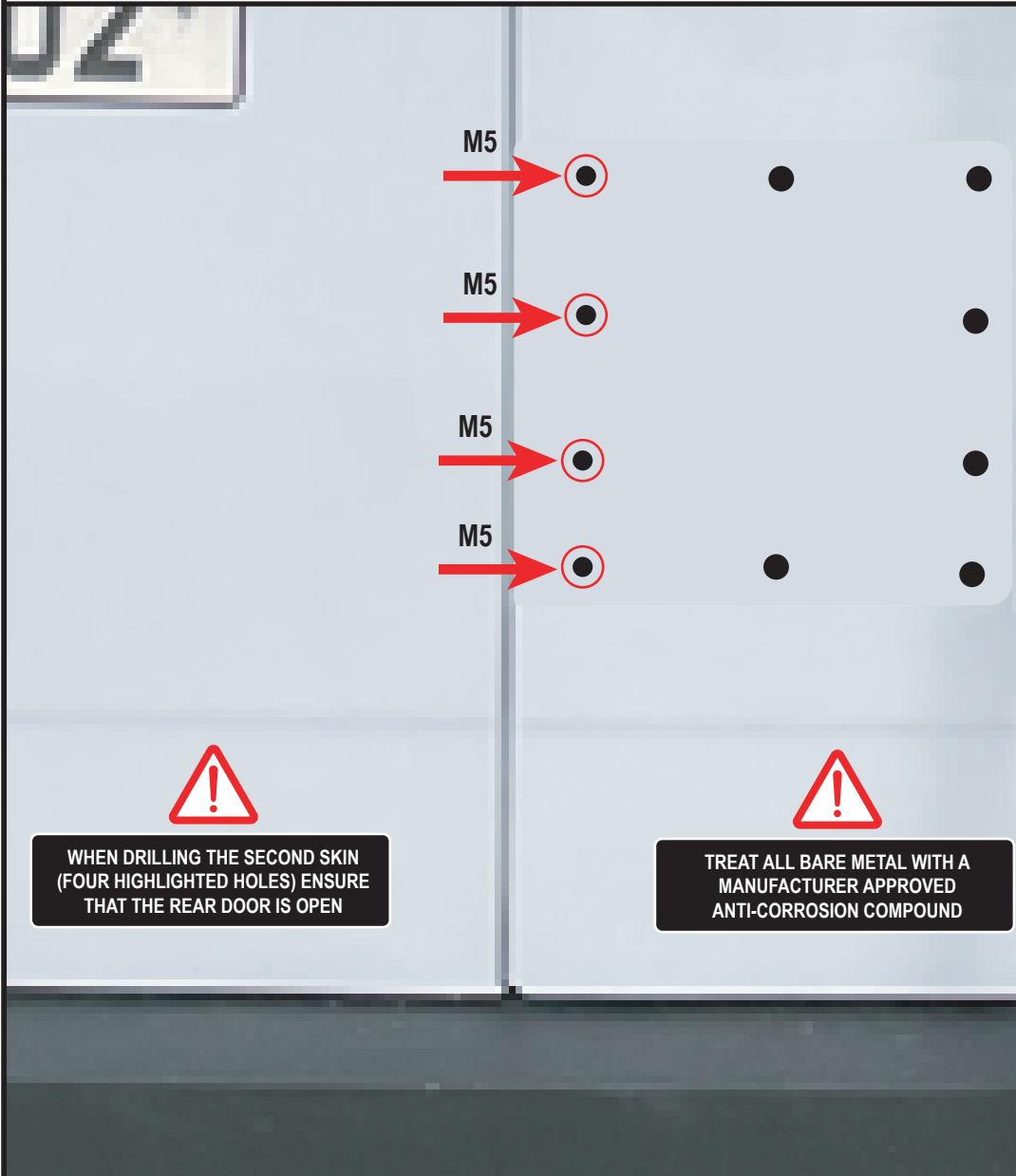
2. POSITIONING THE SHIELD

1. Protect the area of the door where the shield will be fitted with masking tape.
2. Mark 224.5mm from the bottom of the door as shown. Use the rubber gasket as a template to mark the hole positions with the bottom of the gasket at the mark as shown. Make sure the gasket is orientated correctly with the yellow backing facing you and ensure it is running parallel with the rear door. The gasket is profiled 1.5mm smaller than the shield so it needs to be offset 1.5mm from the edge of the door.



3. DRILL HOLES FOR THE SHIELD

With the door open, carefully drill the fixings holes, using a 4mm pilot then opening the 6 x M6 holes to 8mm and the 4 x M5 holes to 7mm. The four highlighted holes have a second skin, carefully drill through both skins. **Take care of what is behind the door when drilling.** Remove any swarf and treat bare metal with anti-corrosion spray.



4. DRILL HOLES FOR THE PLASTIC BUNGS

Open out the four holes shown to 15mm, this is to allow you to get a socket through the hole to later tighten the fixings. **Take care not to drill the outer skin of the door.** Treat all bare metal with a manufacturer approved anti-corrosion compound.



5. FITTING THE SHIELD

Stick the gasket to the outer shield and then place the shield in position as shown. Secure in place with the 4 x small washers and 4 x M5 nyloc nuts at the edge of the door and the 6 x large washers and 6 x M6 nyloc nuts on the remaining studs. **Take care not to overtighten the nuts.** Once fitted, refit the door panel.



6. FITTING THE PLASTIC BUNGS

Insert the four supplied plastic bungs to cover the holes as shown.



7. COMPLETING THE INSTALLATION

The completed rear shield looks like this.

