



**IN9480**

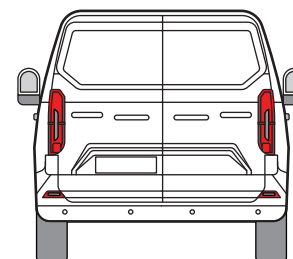
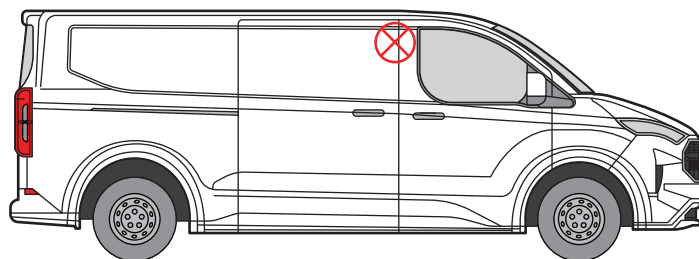
# Anti-Peel - Sliding Door - Top


**THANK YOU FOR PURCHASING A VAN GUARD ANTI-PEEL**

## SUITS THE FOLLOWING MODELS

**Vehicle:**  
Ford Transit Custom 2023-  
Volkswagen Transporter T7 2025-

**Door:**  
Sliding - Driver's



 Indicates approximate placement of Anti-Peel

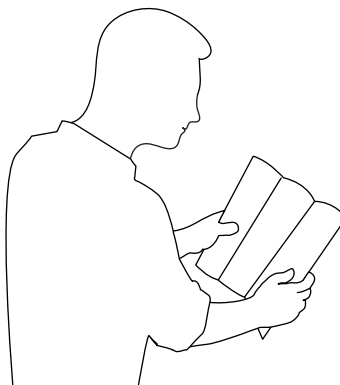


## CAUTION

**PLEASE TAKE THE TIME TO READ THROUGH THE IMPORTANT INFORMATION BELOW BEFORE PROCEEDING TO FIT THIS PRODUCT**



**FAILURE TO TAKE NOTICE OF THE FOLLOWING INFORMATION MAY RESULT IN DAMAGE TO THE VEHICLE.**



**Important:** Follow the instructions and all measurements carefully. Double check measurements before making any cuts. Drawings are for guidance only. Every effort has been made to ensure the accuracy of the instructions provided however Van Guard Accessories Ltd accepts no liability for any inaccuracies of either the drawings provided or vehicle variations. All bare metal should be treated with a manufacturer approved anti-corrosion compound and no liability is accepted for any incorrect installation or corrosion to body panels or within cavities. It is the sole responsibility of the installer to ensure the suitability of both the vehicle and of the supplied parts before installation is started. No liability is accepted for the fitting of the products.

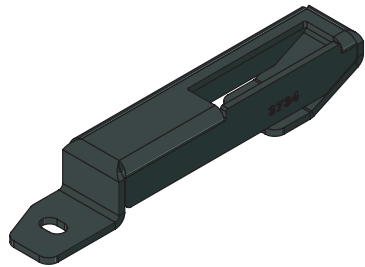
This FITTING INSTRUCTION is the property of VAN GUARD ACCESSORIES LTD. and must not be used for manufacturing purposes, copied nor communicated in any way to third parties without written permission from VAN GUARD ACCESSORIES LTD.

IN9480\_A (CN:NR)

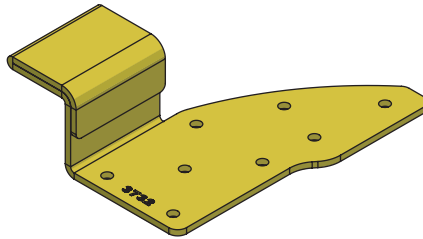
Van Guard Accessories Ltd  
Fair Oak Close, Exeter Airport Business Park,  
Exeter, Devon, EX5 2UL  
[www.van-guard.co.uk](http://www.van-guard.co.uk)

# SUPPLIED COMPONENTS

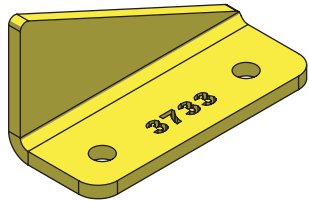
**ME3734 X1**  
(RECEIVING BRACKET)



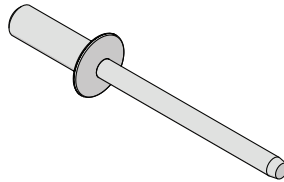
**ME3732 X1**  
(STRIKE BRACKET)



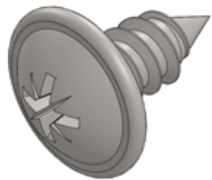
**ME3733 X1**  
(STRIKE BRACKET)



**FX4135 X8**  
(DOME HEAD STEEL RIVET - 4.8 X 12)



**FX4090 X1**  
(SELF TAP SCREW)



Wear the appropriate protective equipment (safety glasses & gloves) while fitting this product.



Dispose of packaging materials responsibly - Do not dispose until you have checked all parts and fixings are present.

# FITTED IMAGE



## 1. INSTALLING RECEIVING BRACKET

To install the receiving bracket (ME3734), first, remove the two bolts shown in image one using a T30 Torx. Then, Fit the receiving bracket as shown in image two. Re-Fit and tighten the Torx bolts.



## 2. INSTALLING STRIKE BRACKET

Close the door from the inside. Fit the strike bracket (ME3732) as shown in the image below. Drill a 3.3mm hole and insert a self-tapping screw. Test the door by opening and closing it from inside, adjust the bracket if necessary to ensure proper operation. Once satisfied with the adjustments, proceed to step 3.



## 3. INSTALLING BRACKETS

Mark and drill the fixing holes using a 4.8mm drill bit. Note that some of these fixings may penetrate a double skin, so drill with care. Fit part (ME3733) to the bottom holes of the strike bracket (ME3732) as shown in the image below, then secure the bracket in place using the provided rivets. Use a suitable rust prevention wax to protect the paintwork.



## 4. FINISHING NOTES

Once all brackets are fixed into position, check the door operation to ensure the brackets align, and remove any swarf from drilling.

